

# TIFF Converter Software for Internet FAX

## User's Guide

- Windows 95/98 English version -

Copyright Panasonic Communications Co., Ltd. 1998 July.

---

### Contents of this manual

1. What TIFF Converter for Internet FAX can do.
2. Operating Environment for Internet FAX
3. Installation of TIFF Converter for Internet FAX
4. How to use TIFF Converter for Internet FAX

This manual or this software is subject to change without prior notice.

Note 1) Windows is a registered trademark of Microsoft Corporation, U.S.A.

---

### 1. What TIFF Converter for Internet FAX can do

The TIFF Converter for Internet FAX allows to convert the document into the format that allows the Internet FAX to receive and print as a mail. The converter also allows the document to be registered (called "TIFF file creation" function) as a file.

When Internet FAX receives and prints the file as an email, the system uses the Simple Mail Transfer Protocol (referred to hereafter as SMTP), which is the same as the email protocol used on the Internet. The copy data to be received and printed is handled as an attached document, or "attachment" to the email.

Internet FAX uses extension software called the Multipurpose Internet Mail Extensions (referred to hereafter as MIME) when adding data as an attached document.

Therefore, to send a file as an attached document to the Internet FAX after "TIFF file creation," sending mail requires using an email application provided with the MIME function.

The data registered under "TIFF file creation" is compressed using the Modified Huffman (referred to hereafter as "MH") method used for FAX communication. This data, added with the facsimile information and other information on the copy, is converted into the Tagged Image File Format or "TIFF".

---

### 2. TIFF Converter Operating Environment for Internet FAX

This manual describes the TIFF Converter for Internet FAX when used with "Microsoft Windows 95/98 version."

System requirements:

- Personal computer with CPU: 80386SX or higher (80486 or higher is recommended)
- Microsoft Windows 95 version or higher
- Memory: 12 MB or more

- Disk capacity: 4 MB or more
- WWW browser for downloading TIFF converter software online.
- E-mail reader with MIME function for sending mail to Internet FAX using the TIFF file creation function.

---

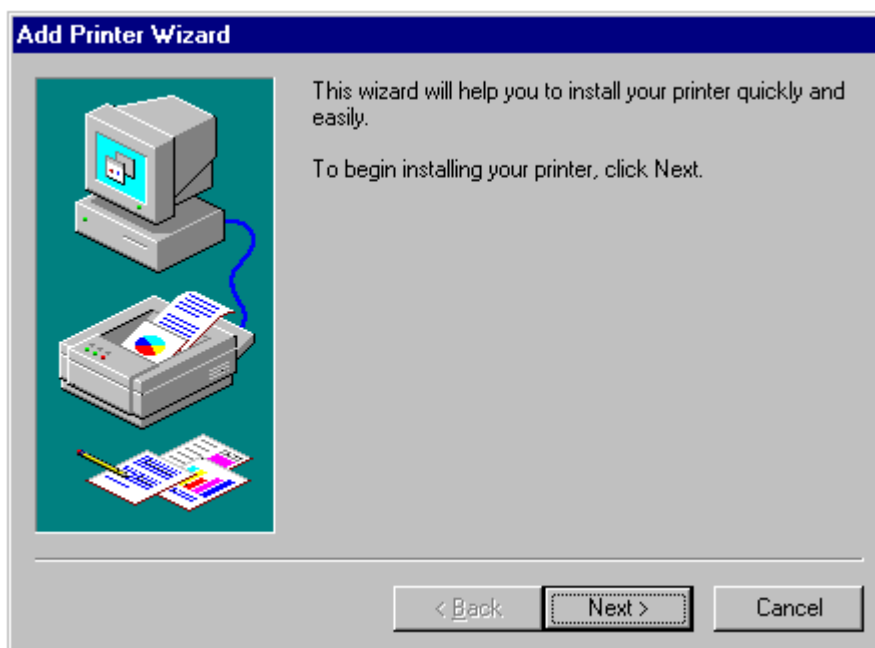
### 3. Installation of TIFF Converter for Internet FAX

In the installation, the system FD or CD for Windows 95/98 (not required for the personal computer with Windows 95/98 pre-installed) will be required. Check them and keep them at hand.

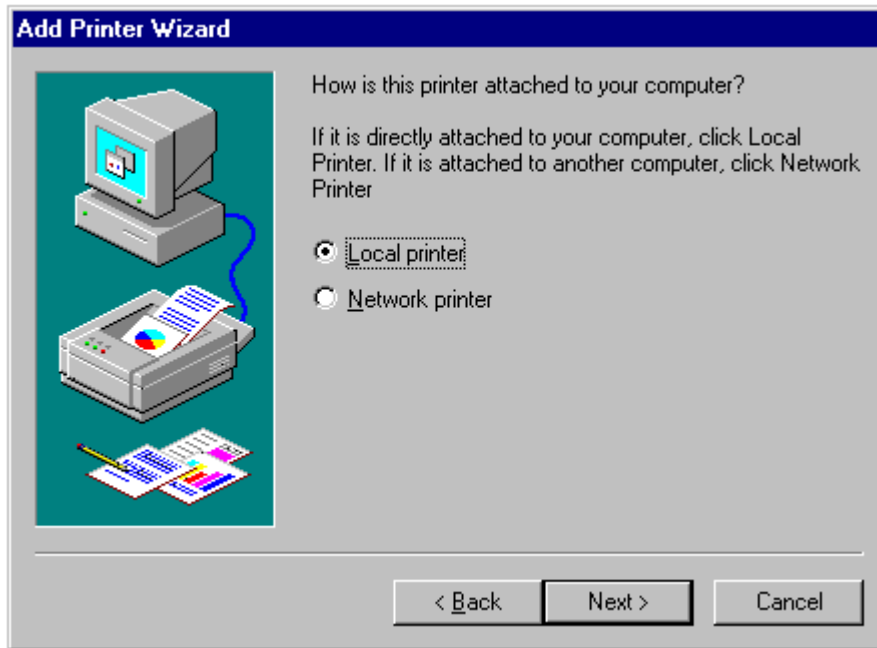
1. The file tf9xxx.exe is downloaded as a self-extracting archive type file in zip format. Double-click on it, and it is extracted.
2. Install the TIFF Converter. Click on the "Start" button, point to "Settings" and click on "Printers" to display the "Printers" window.



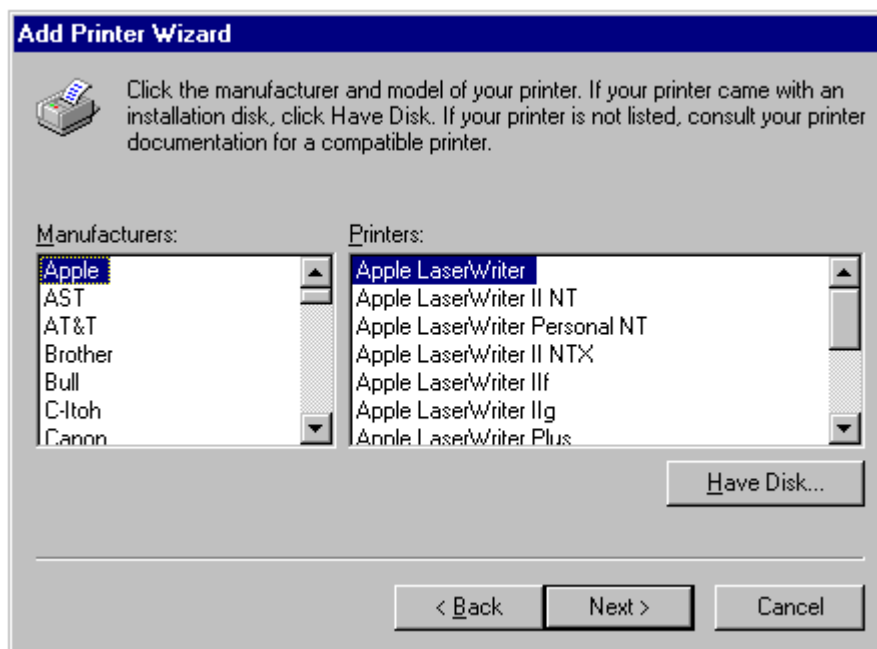
3. Double-click on the "Add Printer" icon in the "Printer" window. "Add Printer Wizard" is displayed. Click on the "Next>" button.



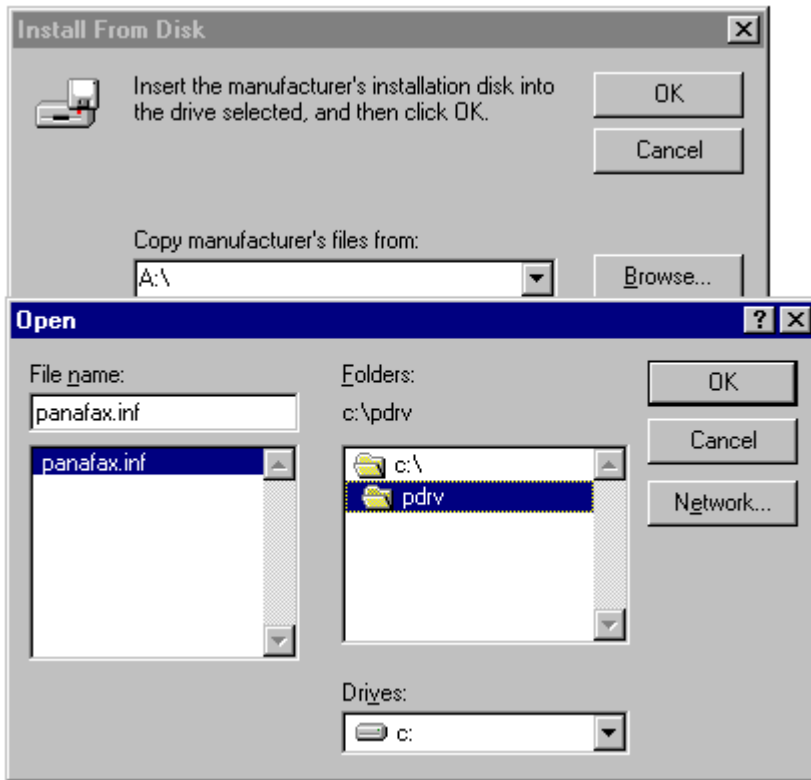
4. "How is this printer attached to your computer?" is displayed on the screen to prompt selection of either local printer or network printer. Select "Local printer" and click on the "Next>" button.



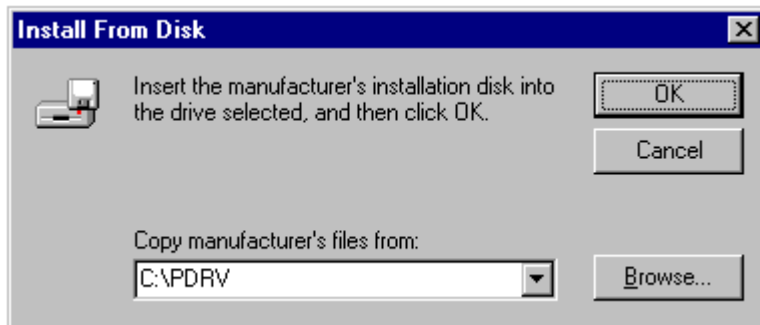
5. Though the tables of "Manufacturers:" and "Printers:" are displayed, click on the "Have disk..." button.



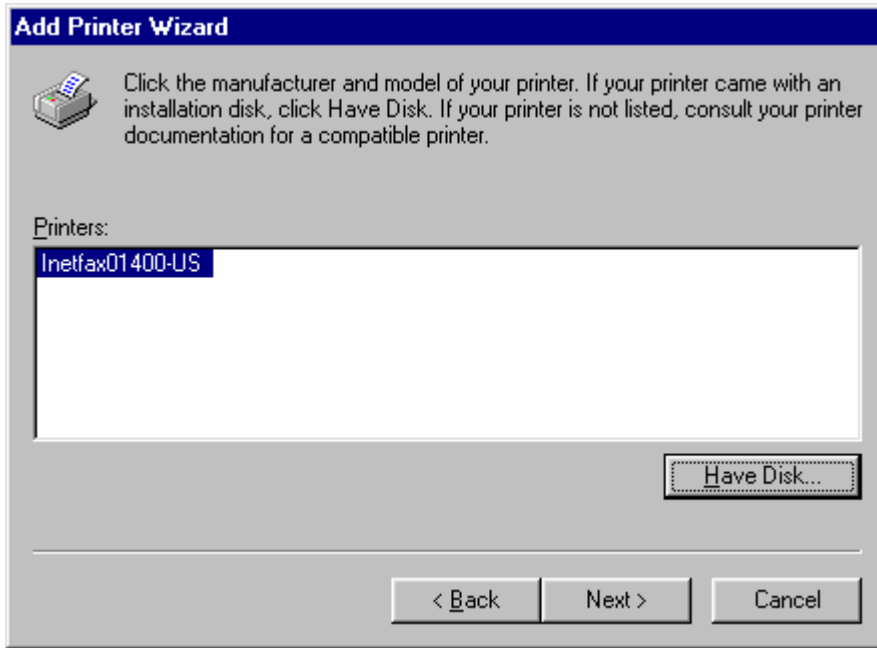
6. The "Install From Disk" dialog box is displayed. Either click on the "Browse..." button or directly type in the folder filename where the extracted software has been saved. The folder filename can be entered in the "Copy manufacture's files from:" field.



7. After you have specified the folder in the "Copy manufacture's files from:" field, click on the "OK" button.



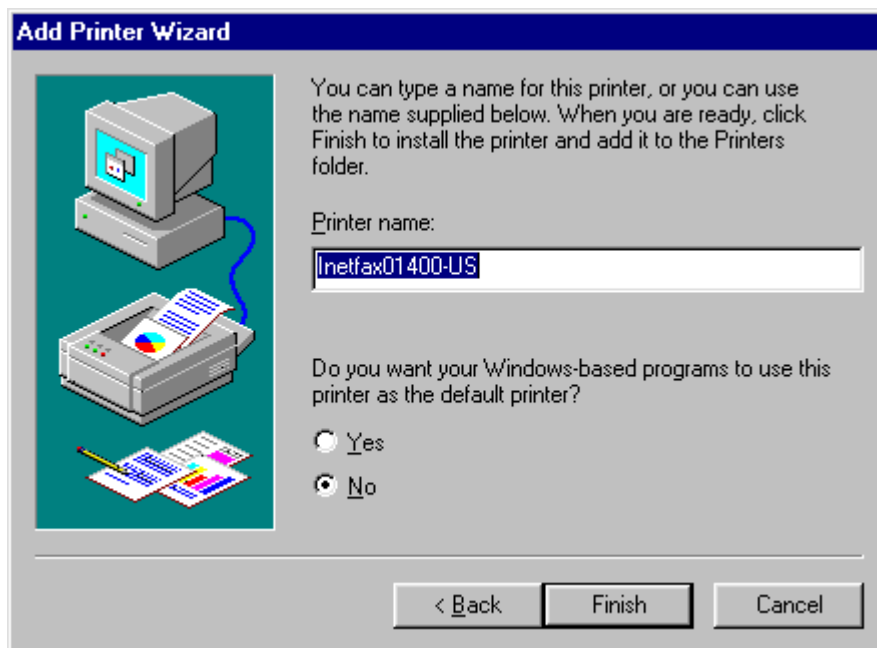
8. Return to "Add Printer Wizard". Select "Inetfax01400-US" and click on the "Next>" button.



9. "Click the port you want to use with this printer, and then click Next." is displayed and the table of ports available is displayed. Select "LPT1: Printer Port" (the characters are reversed) and click on the "Next>" button. This port will be changed later.

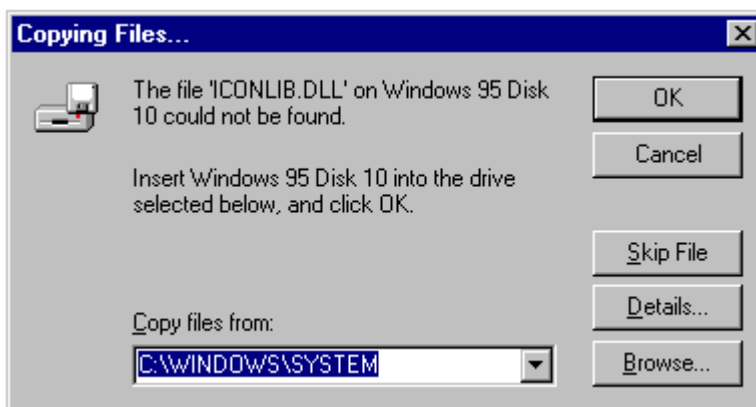


10. "Inetfax01400-US" is displayed for the printer name. Select whether it is set for normal printer or not and click on the "Finish" button.

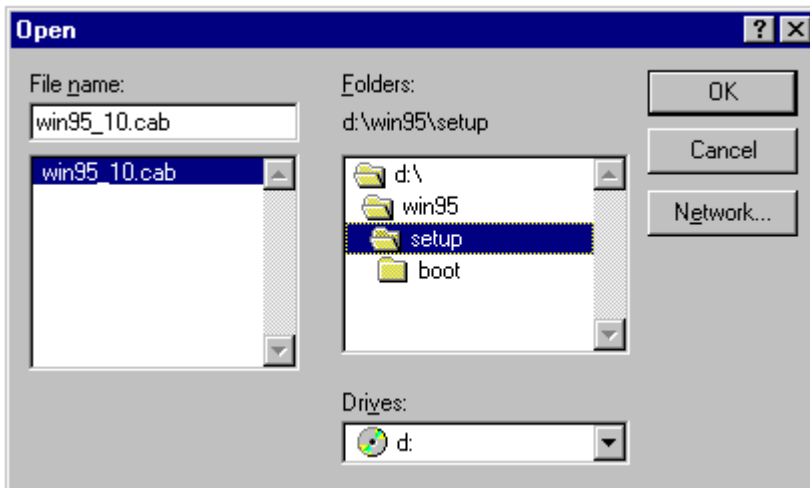


11. If messages including "Could not find ICONLIB.DLL file" are displayed during "Copying files...", proceed as follows:

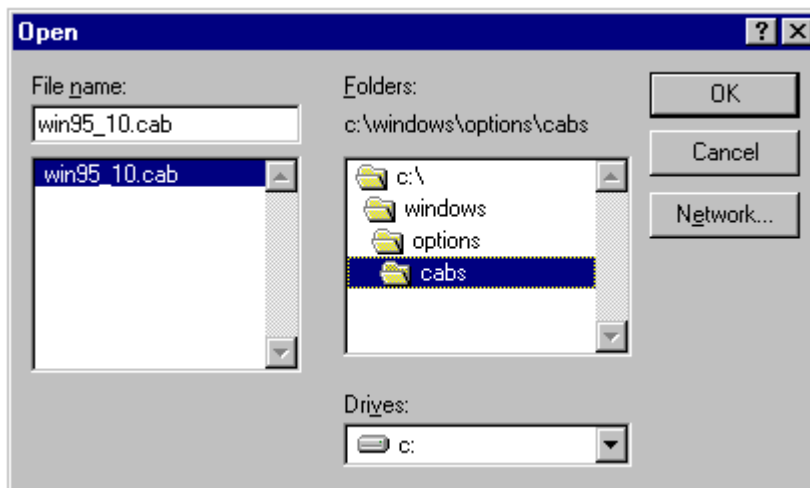
- If another TIFF Converter was already installed, it was copied onto the hard disk. Enter the home drive, "%windows\system" in the "Copy files from:" field, and click on the "OK" button. If copy is normally executed, proceed to step 12.



- In accordance with the instructions of the message, set the CD-ROM (or FD) and click on "Reference". Specify the "Win95" folder in the CD-ROM drive (or FD drive) and click on the "OK" button. If the "Win95" folder is not available, search for the folder in which the cab files(example: WIN95\_15.cab) exist and specify that folder. If copy is normally executed, proceed to step 12.



- For the PCs where the operating system was pre-installed, search for the cab file(example: WIN95\_15.cab) indicated by the message. Specify that folder and click on the "OK" button.



12. When the files copying is completed, the "Inetfax01400-US" icon will be displayed in the "Printer" window. Now, the installation of the printer driver is completed.



Installation is now completed.

Note: If the "install error" message is displayed at completion of installation, it is because another printer driver of our company (OEM version, etc.) was already installed. Two or more of our company's printer drivers can

not be installed at the same time. If you wish to use this printer driver, delete the other printer driver from system and install the printer driver again.

Deleting other printer drivers from registration is as follows:

- Right-click on the icon of the printer you want to delete on the "Printer" screen and click on "Delete".

---

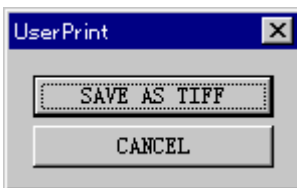
#### 4. How to use TIFF Converter for Internet FAX

When installation of the TIFF Converter for Internet FAX is completed, "Save as TIFF" function is ready to use in the same way as a normal printer is used.

Generally, select "Print" from the "File" menu to print.

(For details, refer to the manual for each software.)

When "Print" is selected, the dialog box to prompt selection of "Save as TIFF," or "Cancel" is displayed. (Some applications may hide the dialog box.)



Select "**Save as TIFF**" when you send the file as a mail to the Internet FAX later.

When "Save as TIFF" is selected, the "Create file" dialog box will be displayed to prompt selection of the folder in which the converted TIFF file is to be saved.

- Specify the location with "Drive" and "Folder".
- Enter the file name to be created into "Filename" field. (Do not change the extension "tif".)
- Do not change "Type of File" field.

Select "**Cancel**" to cancel print.

Although a resolution of 400 dpi can be selected, in addition to standard 200 dpi, for print, do not select 400dpi resolution for UF-E1. Because UF-E1 can not print 400dpi resolution.