

Using the Product with Windows® 8 or Windows Server® 2012

This product is compatible with Windows 8 and Windows Server 2012.

Refer to the Operating Instructions for more information on using Windows 8 or Windows Server 2012.

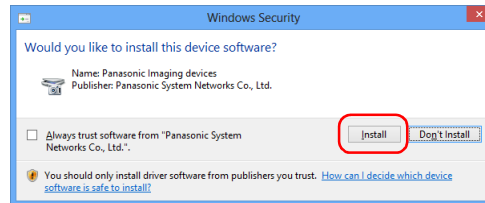
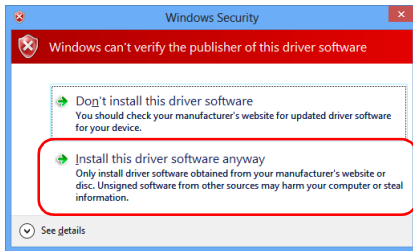
- Trademarks:

Microsoft, Windows, Windows Vista and Windows Server are either registered trademarks or trademarks of Microsoft Corporation in the United States and/or other countries.

1. Installation/Uninstallation

- The installation procedure is the same as that for Windows 7 and Windows Vista.

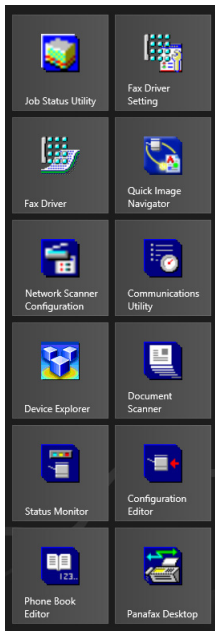
When the “Windows Security” dialog box is displayed, click “Install this driver software anyway” or “Install”.



- To uninstall the software, launch “Uninstall a program” in “Control Panel”.

2. Launching Applications

- Click on an icon on the Start screen to launch the associated application.



- For information on how to use an application, refer to the online help for that application.

Note

- Panasonic Application Manager is launched from Control Panel. If Panasonic Application Manager is not displayed in Control Panel, select “Large icons” or “Small icons” under “View by”.

3. Limitations

The following limitations apply to the use of the product.

- Some setting items are not usable when printing from Windows Store apps. To make use of all setting items, enter the desired Printer settings via Printer in Control Panel.
- Notifications or windows associated with this software may appear in the background behind the Start screen or Windows Store apps. If necessary, switch to the Desktop when using this software.
- The information on this page is subject to change without notice.