

Contents of this manual

1. **What TIFF Converter for Internet FAX can do**
  2. **About the MAPI (Messaging API)**
  3. **Operating Environment for Internet FAX**
  4. **Installation of TIFF Converter for Internet FAX**
  5. **How to use TIFF Converter for Internet FAX**
- 

This manual or this software is subject to change without prior notice.

Microsoft and Windows are registered trademarks of Microsoft Corporation in the United States and/or other countries.

Pentium is a trade name of Intel Corporation of America.

Names of products described here are generally trademarks and trade names of their specific companies.

---

## 1. What TIFF Converter and MAPI Linking Software for Internet FAX can do

The **TIFF Converter for Internet FAX** allows the Internet FAX connected through a LAN to print like a remote printer from the personal computer, and converts the document into the format that allows the Internet FAX to receive and print as a mail. The converter also allows the document to be registered (called "TIFF file creation" function) as a file.

When Internet FAX receives and prints the file as a mail, the system uses the Simple Mail Transfer Protocol (referred to hereafter as SMTP), which is the same as the mail protocol used on the Internet. The copy data to be received and printed is handled as an attached document, or "attachment" to the email.

Internet FAX uses extension software called the Multipurpose Internet Mail Extensions (referred to hereafter as MIME) when adding data as an attached document.

Therefore, to send a file as an attached document to the Internet FAX after "TIFF file creation," sending email requires using the email application provided with the MIME function.

The data registered under "TIFF file creation" is compressed using the Modified Huffman (referred to hereafter as "MH") method used for FAX communication. This data, added with the facsimile information and other information on the copy, is converted into the Tagged Image File Format or "TIFF".

The **MAPI Linking Software** adds the function linking the e-mail client for MAPI to the TIFF converter for the Internet FAX. To send a printing image as mail from the application to the Internet FAX, you have to convert the file into the format that the Internet FAX is allowed to receive and print as a mail using the TIFF file creation function. You also have to send that file to the Internet FAX as an attached document. "ifax Mailer" allows you to automatically "create TIFF files" by pressing one button from the TIFF converter for the Internet FAX. To start the mailer for MAPI, which you always use. You can also open the transmit screen attached with the TIFF file created.

## 2. About the MAPI (Messaging API)

The MAPI (Microsoft Messaging Application Programming Interface) is the common interface specification for sending and receiving mail with a Windows application. It is also a group of functions attached to Win32 that are used to create, transmit, receive, and save mail. Using the common interface provided by MAPI will allow you to develop applications to send and receive mails without having to depend on a particular message system. If you wish to send data created with a Windows application as e-mail, using MAPI also allows you to send e-mail with attached document directly from the windows application without activating another mail client. The mail clients supporting MAPI include not only Microsoft products, such as Microsoft Exchange, Microsoft Outlook and Outlook Express, but also Netscape Navigator and EudoraPro. How to set each client's mail to use it as a MAPI supporting mail client is briefly explained. For details, refer to the user's manual for each mail client. Microsoft Exchange and Microsoft Outlook are registered as a MAPI client when installed.

For Outlook Express, select "Option" from the "Tool" menu and check both "Use Outlook Express as a standard mail client" and "Use Outlook Express as a simplified MAPI client" on the screen of "General" tab. For Netscape Navigator, select "Set" from the "Edit" menu, select "mail server" from "Set mail and group" and check "Use Netscape Navigator for application based on MAPI." For Eudora, select "Option" from the "Tool" menu and select "Always" for "Use of MAPI server" on the "MAPI" screen. Also, to send mails to Internet FAX from Eudora, select "Option" from the "Tool" menu and select "MIME (Base 64)" in "Conversion system for send" on the "Attach" screen.

---

### 3. TIFF Converter and MAPI Linking Software Operating Environment for Internet FAX

#### **Hardware Requirement**

Personal Computer	: IBM® PC/AT® and compatibles (CPU Intel® Pentium® 4 1.6GHz or greater is recommended)
Operating System	: Microsoft® Windows® 2000 (Service Pack 4 or later), Microsoft® Windows® XP (Service Pack 2 or later), Microsoft® Windows Server® 2003 (Service Pack 1 or later), Microsoft® Windows Vista®, Microsoft® Windows Server® 2008, Microsoft® Windows® 7, Microsoft® Windows® 8.
System Memory	: Memory recommended on each OS is; 256MB or more (Windows® 2000), 512MB or more (Windows® XP, Windows Server® 2003), 1GB or more (Windows Vista®, Windows Server® 2008, Windows® 7, Windows® 8).
Free Disk Space	: 300MB or more
Other	: Email Application with MIME Function for Sending Email to Internet FAX using the TIFF file creation function.

#### **Additional Information about Hardware Requirements**

The following Operating System is not supported:

- : Microsoft® Windows Server® 2003 64-bit Edition
  - : Microsoft® Windows Server® 2003 Enterprise Edition for Itanium®-based systems
  - : Microsoft® Windows® XP Professional x64 Edition
  - : Microsoft® Windows Vista® 64-bit edition
  - : Microsoft® Windows Server® 2008 64-bit edition
  - : Microsoft® Windows Server® 2008 Enterprise Edition for Itanium®-based systems
  - : Microsoft® Windows® 7 64-bit edition
  - : Microsoft® Windows® 8 64-bit edition
- 

### 4. Installation of TIFF converter and MAPI Linking Software for Internet FAX

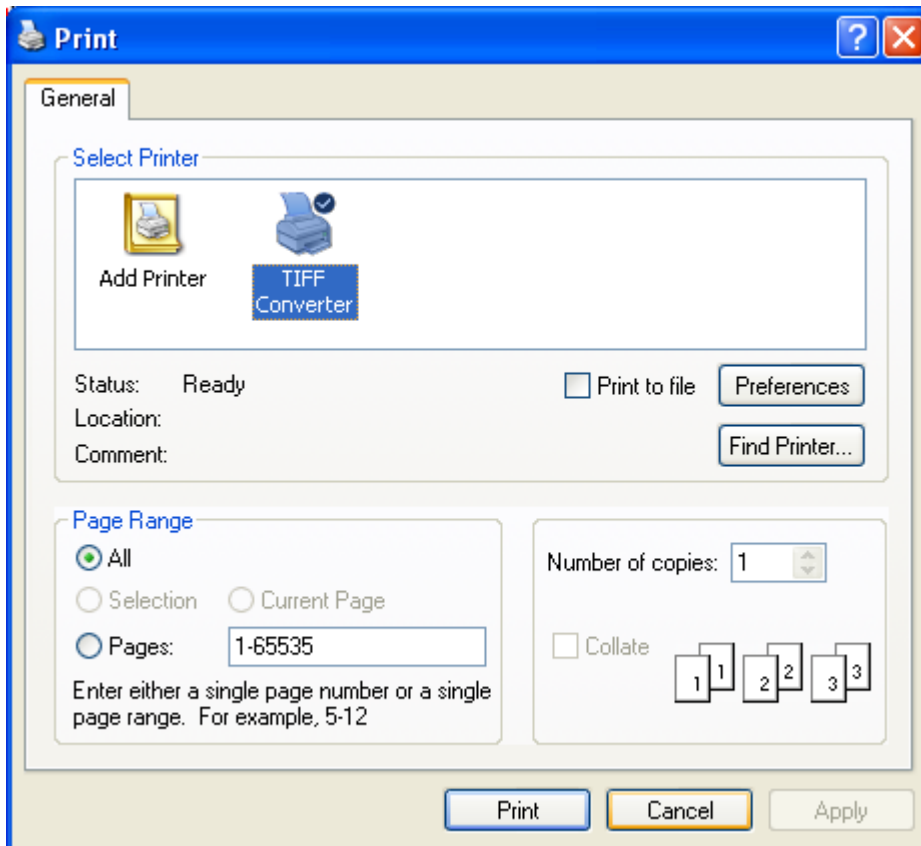
Logon to the computer with an account that can add, or change configurations (i.e. Administrator). Run **Setup.exe** and follow the instruction on your screen to install the program. The TIFF Converter and MAPI Linking Software are installed at the same time.

---

## 5. How to use TIFF Converter for Internet FAX

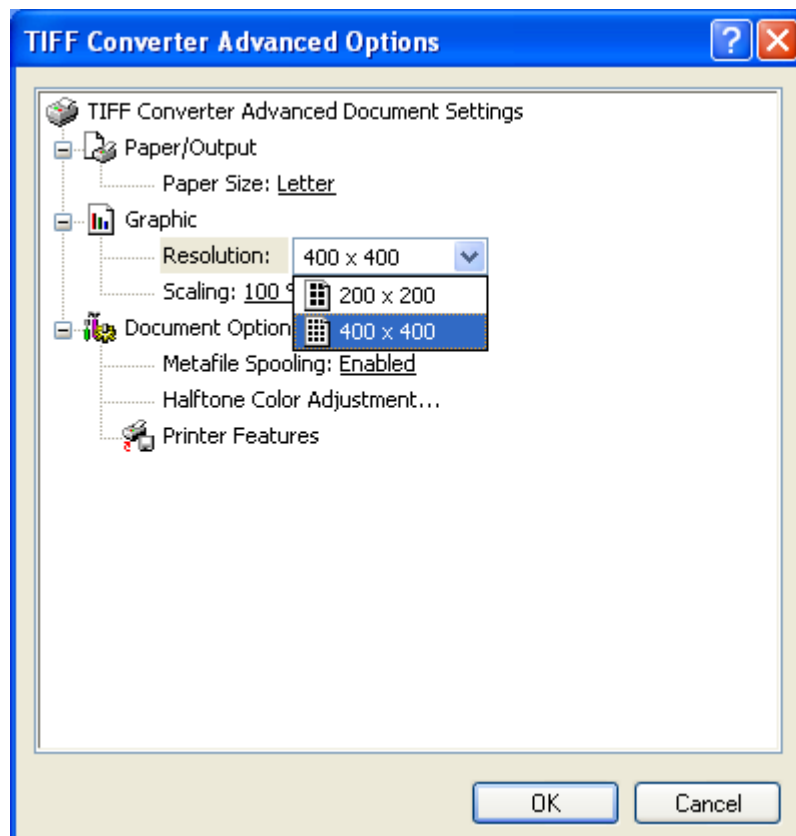
When installation of the TIFF Converter and MAPI Linking Software for Internet FAX is completed, the "**TIFF Converter**" printer driver is added to the Printers and Faxes.

"Save as TIFF" function is ready to use in the same way as a normal printer is used. Generally, select "Print" from the "File" menu to print. (For details, refer to the manual for each software.)

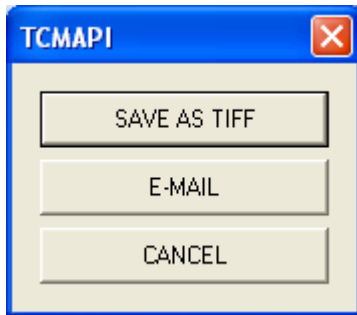


To change the **Resolution**, click [**Preferences**] button on the **Print** screen to bring the **Printer Preferences** screen, and click [**Advanced**] button to bring up the **TIFF Converter Advanced Options** screen.

It doesn't usually need to change setting except for the resolution.



When **[Print]** or **[OK]** is selected, the dialog box to prompt selection of [SAVE AS TIFF], [E-MAIL] or [CANCEL] is displayed. (Some applications may hide the dialog box.)



Select **[SAVE AS TIFF]** when you send the file as an email to the Internet FAX later.

When [SAVE AS TIFF] is selected, the "SAVE AS TIFF" dialog box will be displayed to prompt selection of the folder in which the converted TIFF file is to be saved.

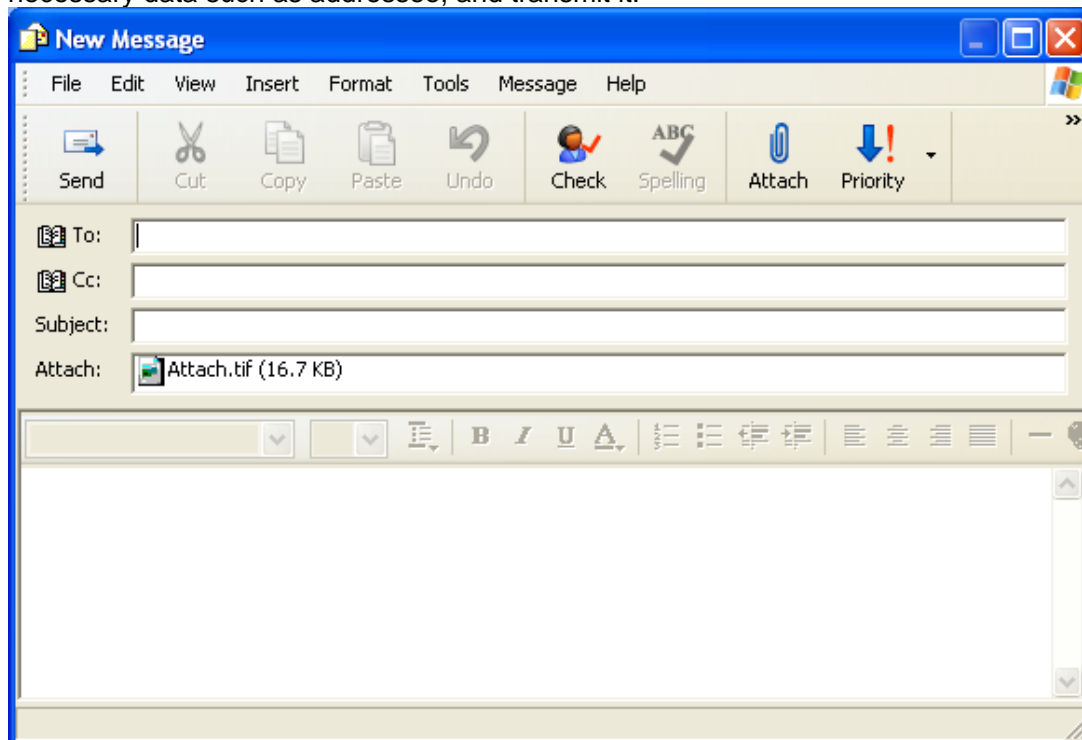
Specify the location with "Drive" and "Folder".

Enter the file name to be created into "Filename" field. (Do not change the extension "tif".)

Do not change "Type of File" field.

Select **[E-MAIL]** to link an e-mail message.

When [E-MAIL] is selected, the mail linking function starts to work, the TIFF file is automatically saved, the transmission screen of the mail client is opened, and the TIFF file (saved as an attached file) is added. After the mail transmit screen is displayed, follow the operation procedure of each mail client to enter the necessary data such as addressee, and transmit it.



Select **[CANCEL]** to cancel TIFF file creation function.

When [CANCEL] is selected, the screen is closed and created data is deleted.