

Memory Card Print Utility Overview

The Memory Card Print Utility allows you to print certain types of document data stored on the USB Memory, SD or PC card from the printer without requiring direct access to a PC. This user data is transferred from the USB Memory, SD or PC card to the Server for processing, and then sent to the printer for printing. (JPEG, and TIFF data files are printed directly from the USB Memory, SD or PC card.)

The following types of document data can be printed from a USB Memory, SD or PC card via a Server:

- Microsoft Word documents
- Microsoft PowerPoint documents
- Adobe PDF documents

Users printing these documents do not need to operate the Memory Card Print Utility directly. Instead, the administrator manages all details of installing, and setting up the Memory Card Print Utility.

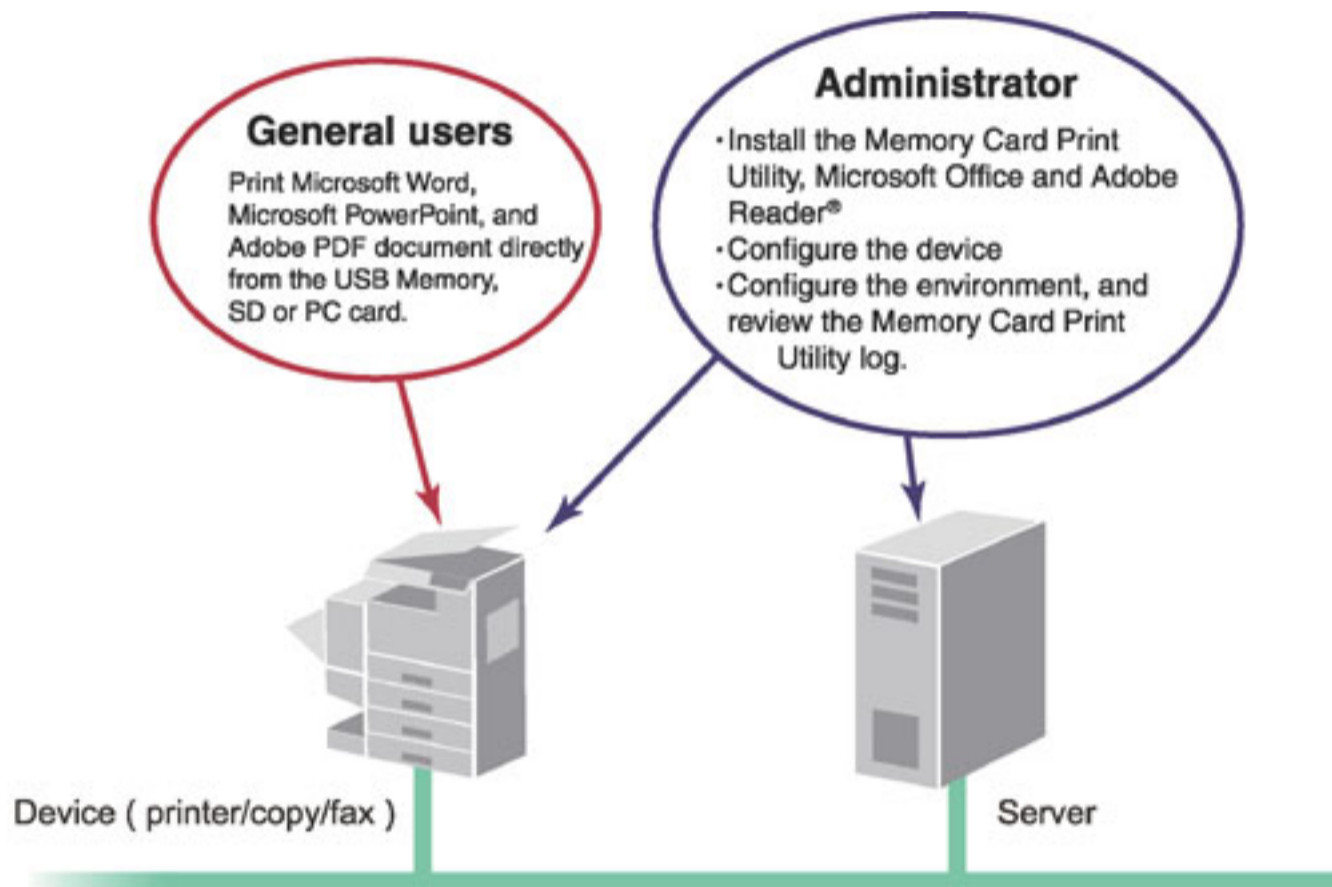
Administrator

Installs the Memory Card Print Utility, and configures it so that it can be used from the printer.

The Administrator can also view the usage logs, and specify whom to notify when errors occur.

General users

Users can print Microsoft® Word, Microsoft® PowerPoint®, or Adobe® PDF documents stored in a USB Memory, SD or PC card directly from the printer's control panel.



System Requirements

PC

PC	IBM® PC/AT® and compatibles
Operating system	Microsoft® Windows® 2000 operating system (Service Pack 4 or later) Microsoft® Windows® XP operating system (Service Pack 2 or later) Microsoft® Windows Server® 2003 operating system (Service Pack 1 or later) Microsoft® Windows Vista® operating system Microsoft® Windows Server® 2008 operating system The following Operating Systems are not supported: Microsoft® Windows Server® 2003 Enterprise Edition for Itanium®-based systems Microsoft® Windows® XP Home Edition Microsoft® Windows Server® 2008 Enterprise Edition for Itanium®-based systems
CPU	Intel® Pentium® 4 1.6 GHz or greater is recommended
Main memory	256 MB or more is recommended (Windows® 2000) 512 MB or more is recommended (Windows® XP, Windows Server® 2003) 1 GB or more is recommended (Windows Vista®, Windows Server® 2008)
Free Disk Space	300 MB or more
Service account	The Service Account for the Memory Card Print Utility can be changed from Local System Account to an User Account with Administrator Group permissions. DCOM must be enabled. The DCOM configuration settings for Microsoft® Word and Microsoft® PowerPoint® must be modified to allow use by specific users.
Supported applications	Microsoft® Word 2000 Microsoft® Word 2002 Microsoft® Word 2003 Microsoft® Word 2007 Microsoft® PowerPoint® 2000 Microsoft® PowerPoint® 2002 Microsoft® PowerPoint® 2003 Microsoft® PowerPoint® 2007 Adobe® Reader® 6.0 Adobe® Reader® 7.0 Adobe® Reader® 8.0 Adobe® Reader® 9.0 (Which applications are formally supported depends on the operating system used. Refer to the Microsoft® and Adobe® web sites for details.)
Supported file formats	DOC (Microsoft Word) PPT (Microsoft PowerPoint) PDF (Adobe Reader)
CD-ROM drive	Used for the software installation.
Interface	Ethernet 10Base-T/100Base-TX/1000Base-T (IP address of server must be static)
Web browser	Windows version, Internet Explorer® 6.0 Service Pack 1 or later
Screen resolution	640 x 480 pixel or more (1024 x 768 pixel is recommended)
Screen color	256 colors or more (65536 colors are recommended)

(Trademarks Notice)

Microsoft® Windows® 2000 operating system (Windows 2000)

Microsoft® Windows® XP operating system (Windows XP)

Microsoft® Windows Server® 2003 operating system (Windows Server 2003)

Microsoft® Windows Vista® operating system (Windows Vista)

Microsoft® Windows Server® 2008 operating system (Windows Server 2008)

Microsoft® Internet Explorer® 6.0 (Internet Explorer)

The following trademarks and registered trademarks are used throughout this manual:

Microsoft, MS-DOS, Windows, Windows Server, Windows Vista, PowerPoint, Excel® and Internet Explorer are either registered trademarks or trademarks of Microsoft Corporation in the United States and/or other countries. Microsoft product screen shot(s) reprinted with permission from Microsoft Corporation.

i386, i486, Intel, Celeron, Intel Centrino, Pentium and Itanium are trademarks of Intel Corporation and its subsidiaries.

IBM and AT are the trademarks or registered trademarks of International Business Machines Corporation in the U.S. and other countries.

The USB-IF Logos are trademarks of Universal Serial Bus Implementers Forum, Inc.

Mac, Mac OS, Macintosh, True Type and Apple are trademarks of Apple Inc., registered in the U.S. and other countries.

Novell, NetWare, IntranetWare, NDS are registered trademarks of Novell, Inc. in the USA and other countries.

PEERLESSPage™ is a trademark of the PEERLESS Systems Corporation; and, PEERLESSPrint® and Memory Reduction Technology® are registered trademarks PEERLESS Systems Corporation; and,

COPYRIGHT © 2005 PEERLESS Systems Corporation. COPYRIGHT © 2005 Adobe Systems Incorporated. All Rights Reserved; and Adobe® PostScript® 3™.

Universal Font Scaling Technology (UFST) and all typefaces have been licensed from Monotype Imaging Inc.

Monotype® is a registered trademark of Monotype Imaging Inc. registered in the U.S. Patent and Trademark Office and may be registered in other jurisdictions.

ColorSet™ is a registered trademark of Monotype Imaging Inc. registered in the U.S. Patent and Trademark

Office and may be registered in other jurisdictions. ColorSet™ Profile Tool Kit, Profile Studio and Profile Optimizer are trademarks of Monotype Imaging Inc. and may be registered in certain jurisdictions. COPYRIGHT © 2007 Monotype Imaging Inc. All Rights Reserved.

PCL is a trademark of Hewlett-Packard Company.

Adobe, Acrobat, Adobe Type Manager, PostScript, PostScript 3 and Reader are either registered trademarks or trademarks of Adobe Systems Incorporated in the United States and/or other countries.

Application software for this device contains a number of programs licensed under the terms of the GNU Lesser General Public License and other open software. For more details and applicable license thereof, please refer to the Read Me file for the software.

All other product/brand names, trademarks or registered trademarks identified herein are the property of their respective owners.

In these Operating Instructions, some ™ and ® marks are omitted from the main text.

© Panasonic Communications Co.,Ltd. 2005-2008

Unauthorized copying and distribution is a violation of law.

Panasonic accepts no liability for any effects resulting from the use of this software or manual.

Published in Japan.

The contents of these Operating Instructions are subject to change without notice.



Preparing to Install the Memory Card Print Utility (Administrator)

This section describes the Installation, and configuration of the Memory Card Print Utility on a server. Read the following steps before installing the Memory Card Print Utility.

1. [Installing Microsoft Office, and Adobe Reader](#)
2. [Installing, and Uninstalling the Memory Card Print Utility](#)
3. [Setting Up the device](#)



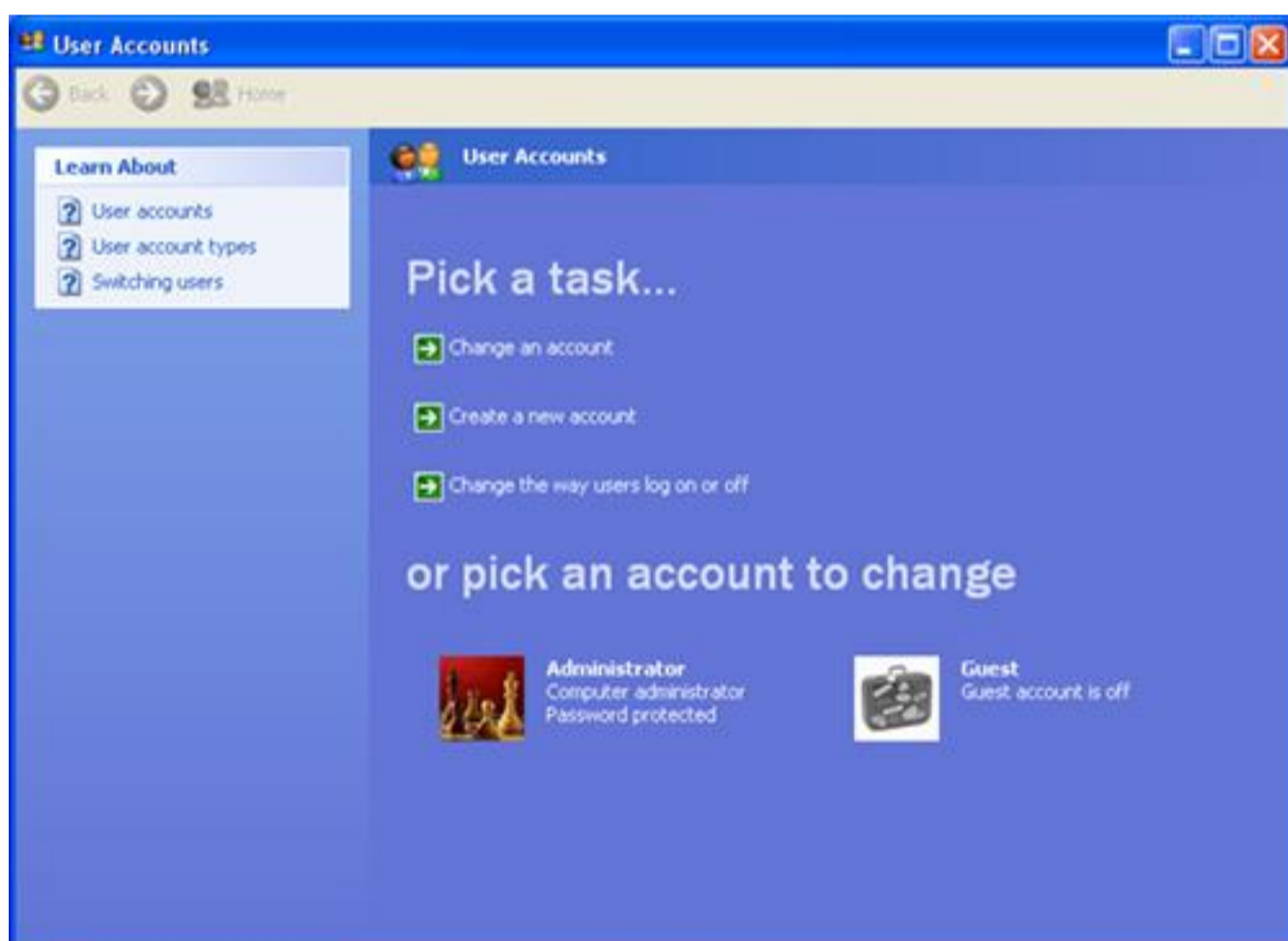
Installing Microsoft Office, and Adobe Reader

Install Microsoft Office, and Adobe Reader on the server that has the Memory Card Print Utility installed.

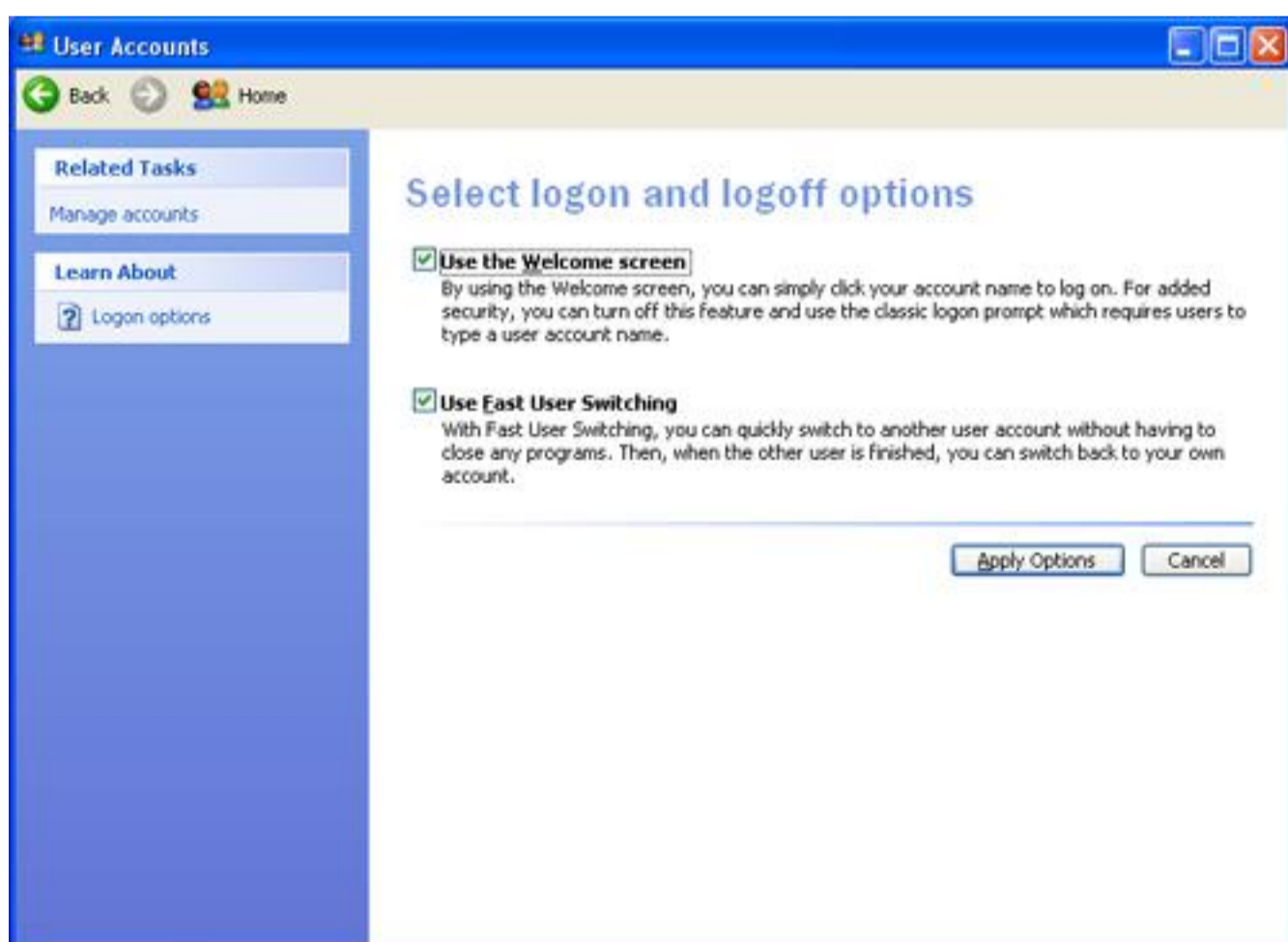
- Log on as an Administrator, and install Microsoft Office and Adobe Reader.
- The following versions of the Microsoft Office products, and the Adobe Readers are supported.
 - Microsoft Office 2000
 - Microsoft Office XP
 - Microsoft Office 2003
 - Microsoft Office 2007
 - Microsoft Word 2000
 - Microsoft Word 2002
 - Microsoft Word 2003
 - Microsoft Word 2007
 - Microsoft PowerPoint 2000
 - Microsoft PowerPoint 2002
 - Microsoft PowerPoint 2003
 - Microsoft PowerPoint 2007
 - Adobe Reader 6
 - Adobe Reader 7
 - Adobe Reader 8
 - Adobe Reader 9

Caution:

- After installing Microsoft Word, Microsoft PowerPoint, and Adobe Reader, log on as the local domain Administrator, start each software application, and confirm that they are operating properly.
- To add a User Account to the Local Administrators Group in Windows XP, please follow the directions below.
The User Account screen appears.



Click the "Change the way users log on or off" button.



Clear the "Use the Welcome screen" checkbox and then click the "Apply Option" button.

Log off, and log on as the Administrator.

- Adobe Reader requires you to agree to the license agreement after it is first started. Be sure to log on as the Administrator (use the same user name as the service account), and complete the license agreement procedures before installing the Memory Card Print Utility.

Note:

Install Microsoft Office, and Adobe Reader according to their instruction manuals.



Installing, and Uninstalling the Memory Card Print Utility

This section explains how to install, and uninstall the Memory Card Print Utility.

Caution:

- Please install Microsoft Word, PowerPoint, and Adobe Reader before installing the Memory Card Print Utility. The Memory Card Print Utility cannot install if these software applications are not already installed. The Adobe Reader also requires you to accept its license agreement when it is first started. Please perform this procedure before installing the Memory Card Print Utility.
- The Adobe Reader can be downloaded from the web site. Please perform this procedure on a computer that is connected to the internet.
- The installation may not complete normally on some computers if the anti-virus software is running. Turn off the anti-virus before installing the utility software.
- Even if the utility software is installed successfully, it may not operate correctly in some cases when the anti-virus software is running. Visit the following web site for information on what to do for each type of anti-virus software.

http://panasonic.net/pcc/support/office_products.html

Installing the Memory Card Print Utility

Install the Memory Card Print Utility on a server.

Login as the Administrator of the local domain, and install the Memory Card Print Utility.

1. Insert the CD-ROM into the CD-ROM drive on the server.

After a short time, the installation program starts. The Panasonic Document Management System **Install Software** screen appears.

Install Software screen



Note:

- Before installing, click the Documentation tab, then Memory Card Print Utility, and "Read Me First" to open the ReadMe file. This file contains useful information including the hardware requirements, and installation notes.
- Depending on the model you are using, the contents that are displayed may differ.

2. Click the **Optional Software** tab. The **Optional Software** screen appears. Click the **Memory Card Print Utility**.

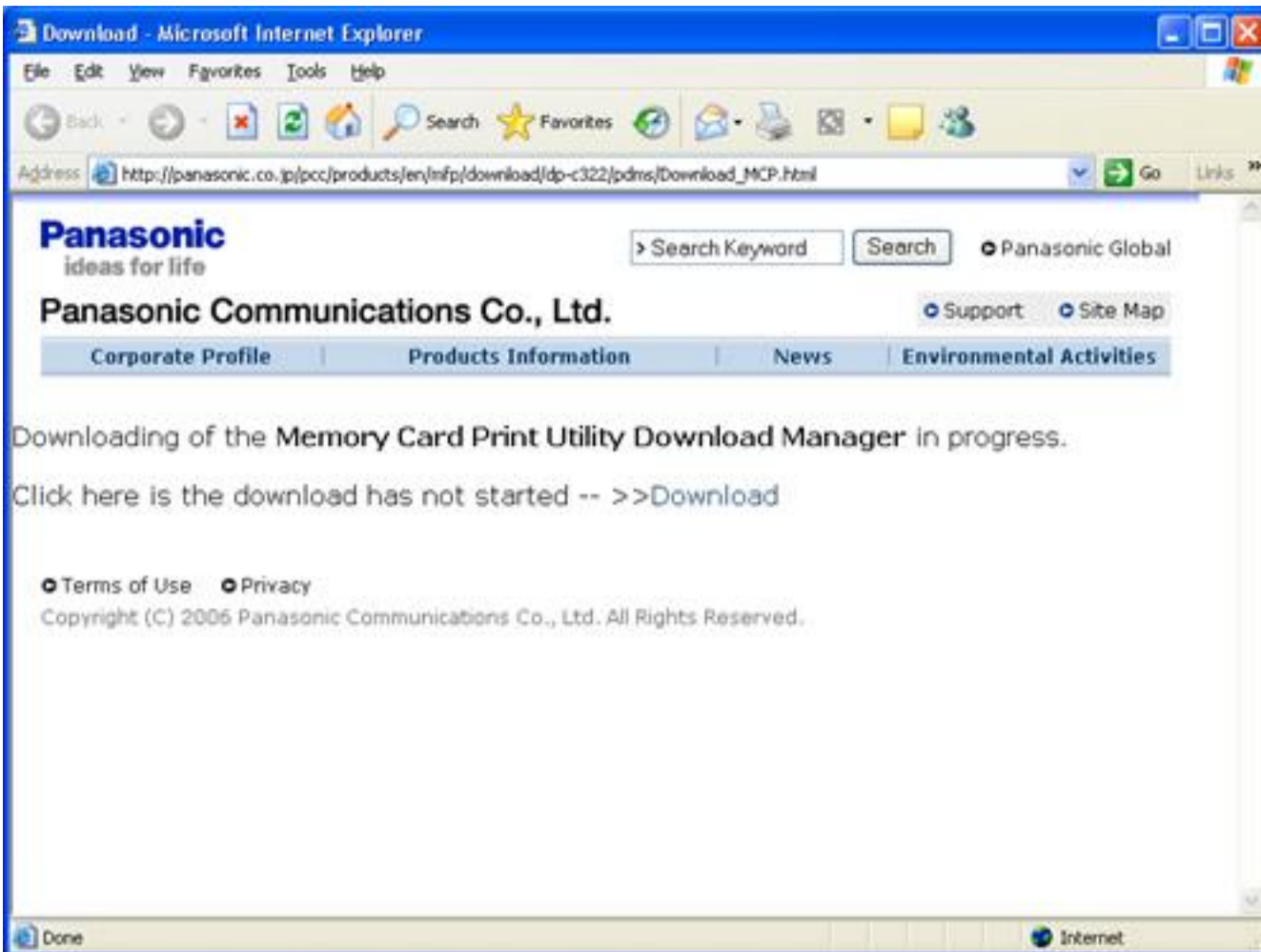
Optional Software screen



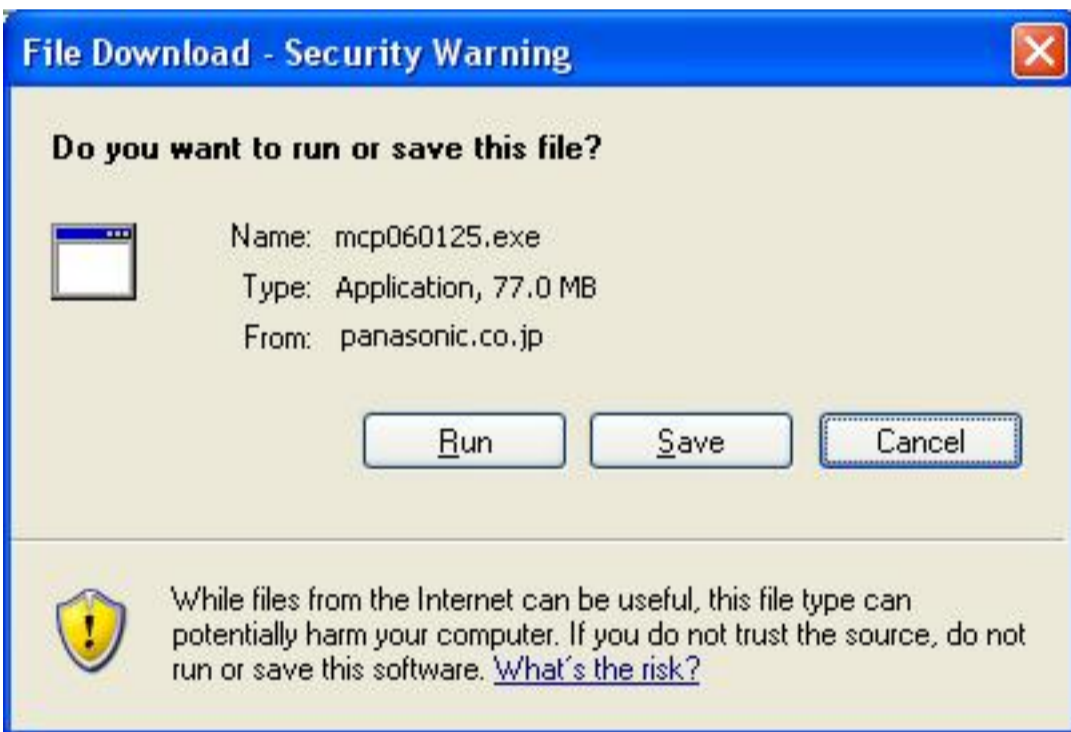
Note:

Depending on the model you are using, the contents that are displayed may differ.

3. The install programme is downloaded from the Web Site automatically.
If the dialog box does not appear, click **Download** in the web page.



In the download confirmation (Security Warning) dialog box, click **Run** button.



4. This extracts the installation program.



5. After extraction of the installation program completes, the Installation Wizard starts.
After a short time, the InstallShield Wizard screen appears. Click the **Next** button.

Note:

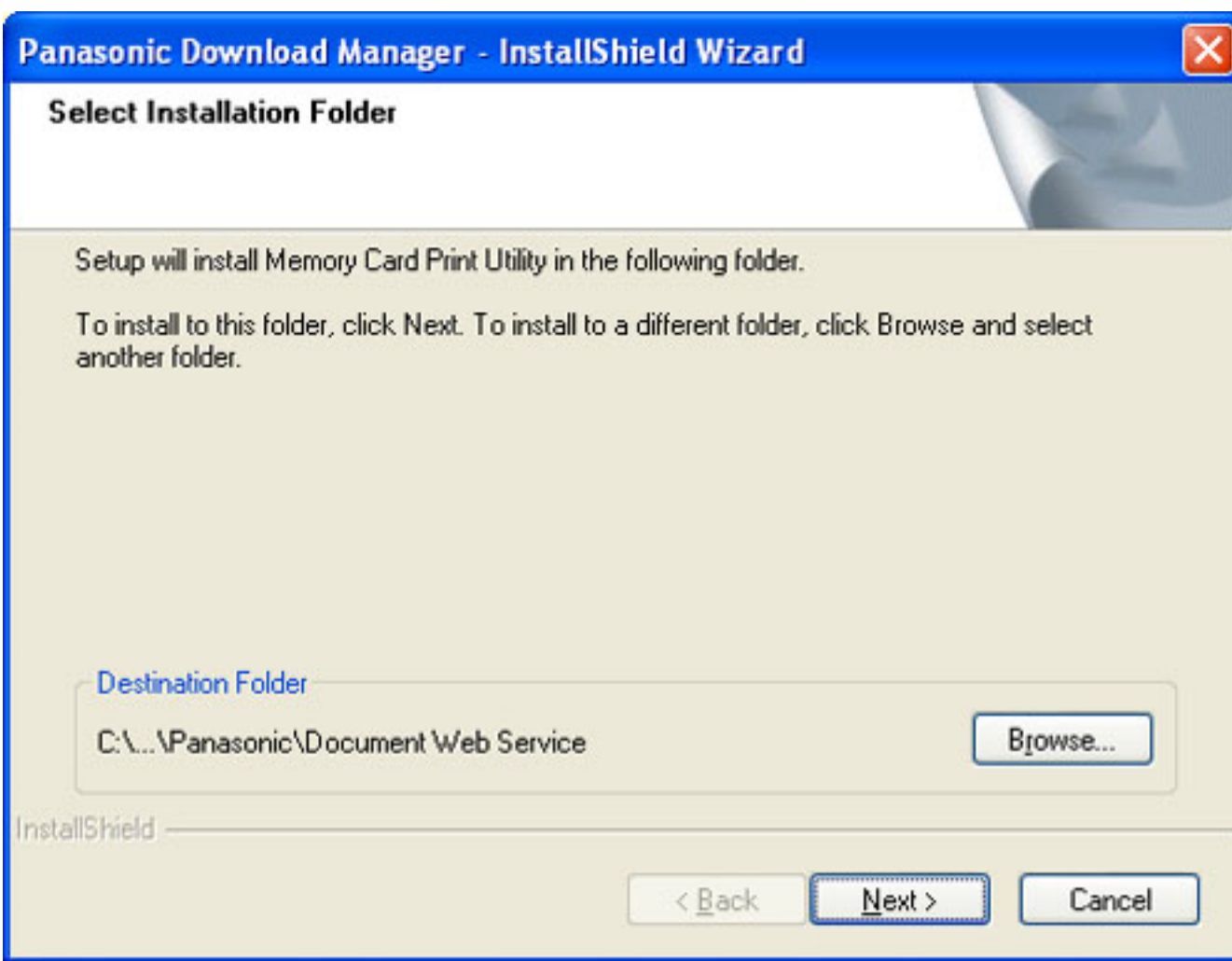
An Error message may appear if Microsoft Word, Microsoft PowerPoint, or Adobe Reader are not installed correctly.
Install Microsoft Word, Microsoft PowerPoint, and Adobe Reader correctly according to the error messages.

- [Installing Microsoft Office, and Adobe Reader](#)
- [Cautions and Limitations](#)

6. Selecting the Installation Folder

The Select Installation Folder screen appears. Confirm the Installation Destination, and click the **Next** button.
To install to a different Installation Destination, click the **Browse** button, and select a different folder.

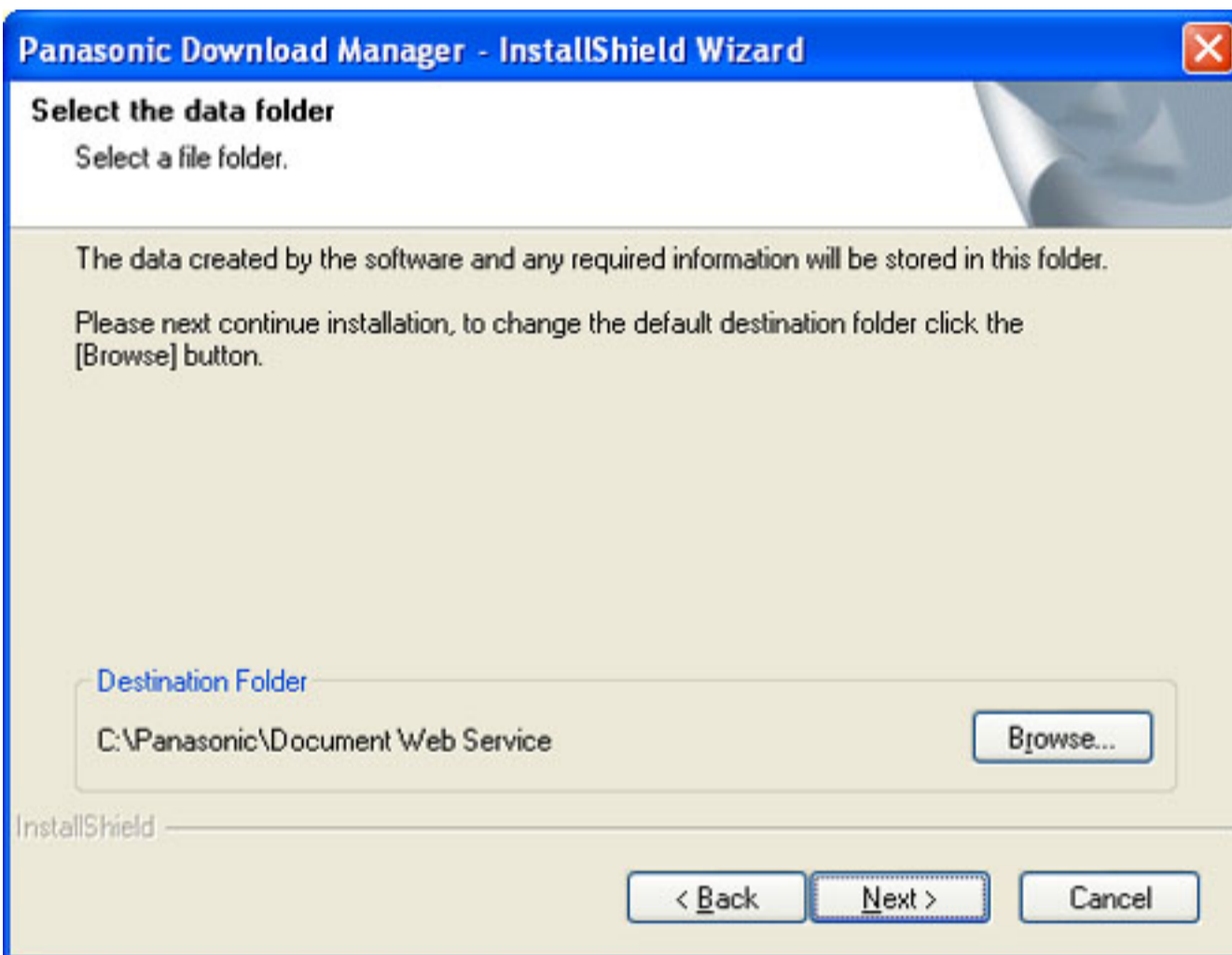
Select Installation Folder screen



7. Selecting the Data Folder

The Select Data Folder screen appears. Confirm the location of the data folder, and click the **Next** button. To change the location of the data folder, click the **Browse** button, and select a different folder.

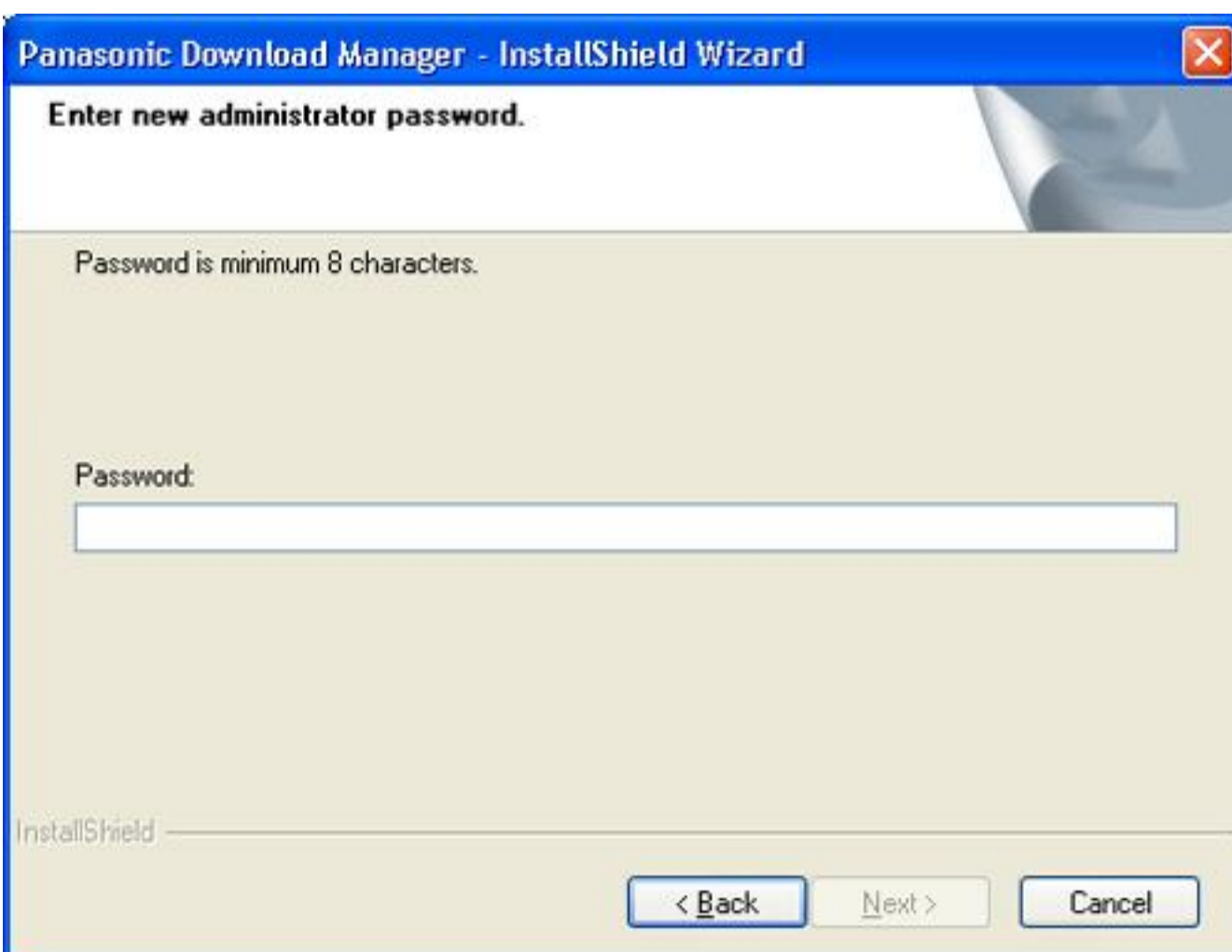
Select Data Folder screen



8. Enter the administrator's Password to configure the Memory Card Print Utility on a web browser.

The Password should be 8 to 31 characters long, Small / Capital letters and following characters are valid in the Password; ! # \$ % ' () { } * + . : ; = ? @ _ ` • [] - .

Administrator's Password Entry Screen

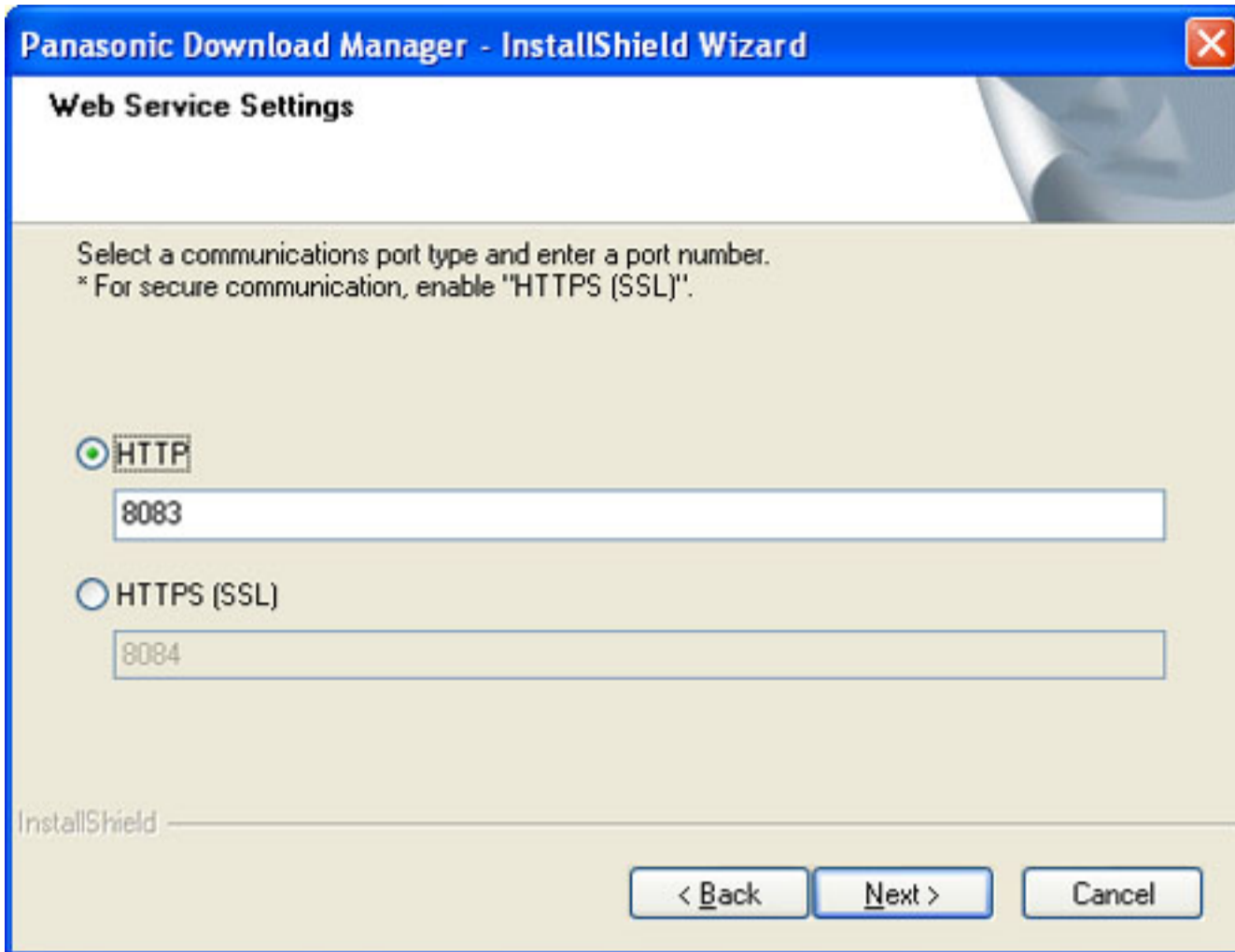


9. Select the HTTP or HTTPS* Port and the TCP port number to connect the Web Server.

If you do not have a specific reason for changing the port, just leave the default value for the port number, and click **Next** button.

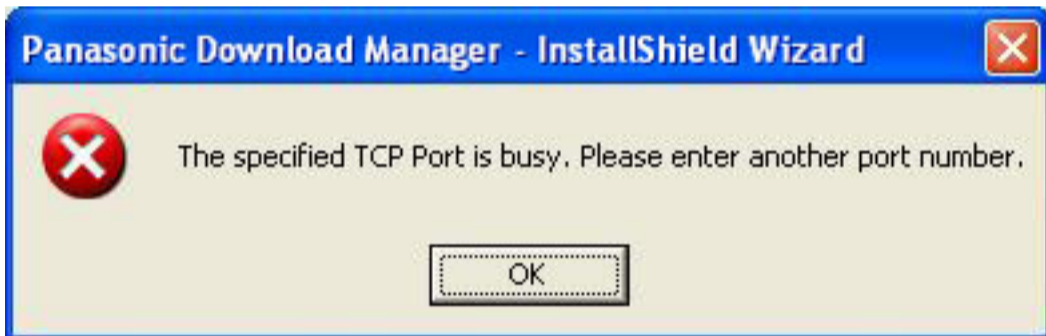
* : HTTPS is available for DP-C406/C306/C266 only.

Web Service Setting screen



Caution:

If the port number is already in use, the following message appears.



If this message appears, click the **OK** button to close the message box. Input an unused port number in the Web Port Number Selection screen.

Important:

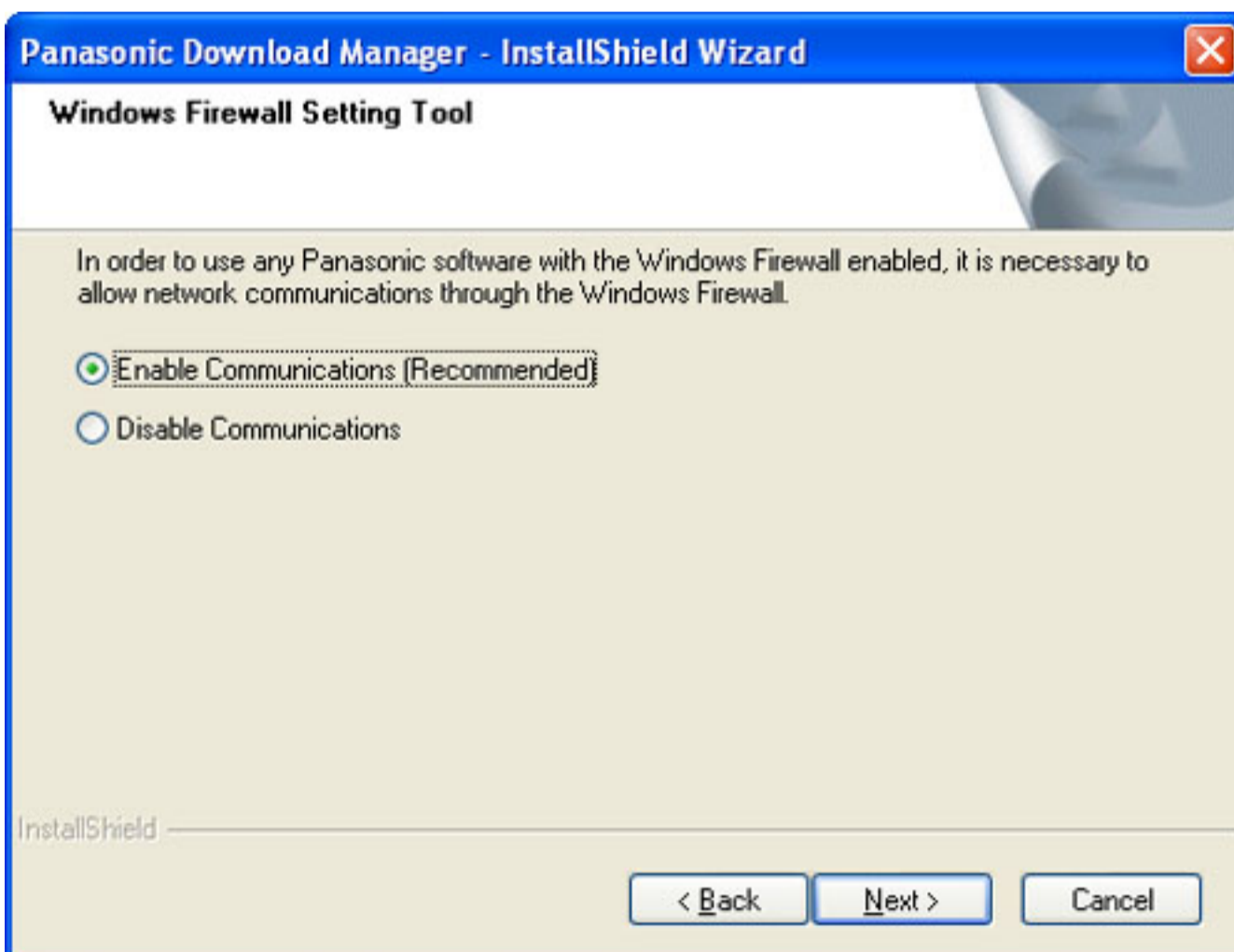
If the default port is changed during installation, the new port number must be specified at the device.

Note:

The Windows Firewall Setting Tool screen may appear if using Windows XP Professional, Windows Server 2003, Windows Vista or Windows Server 2008.

Select **Enable Communications (Recommended)**, and click the **Next** button.

Windows Firewall Setting Tool screen



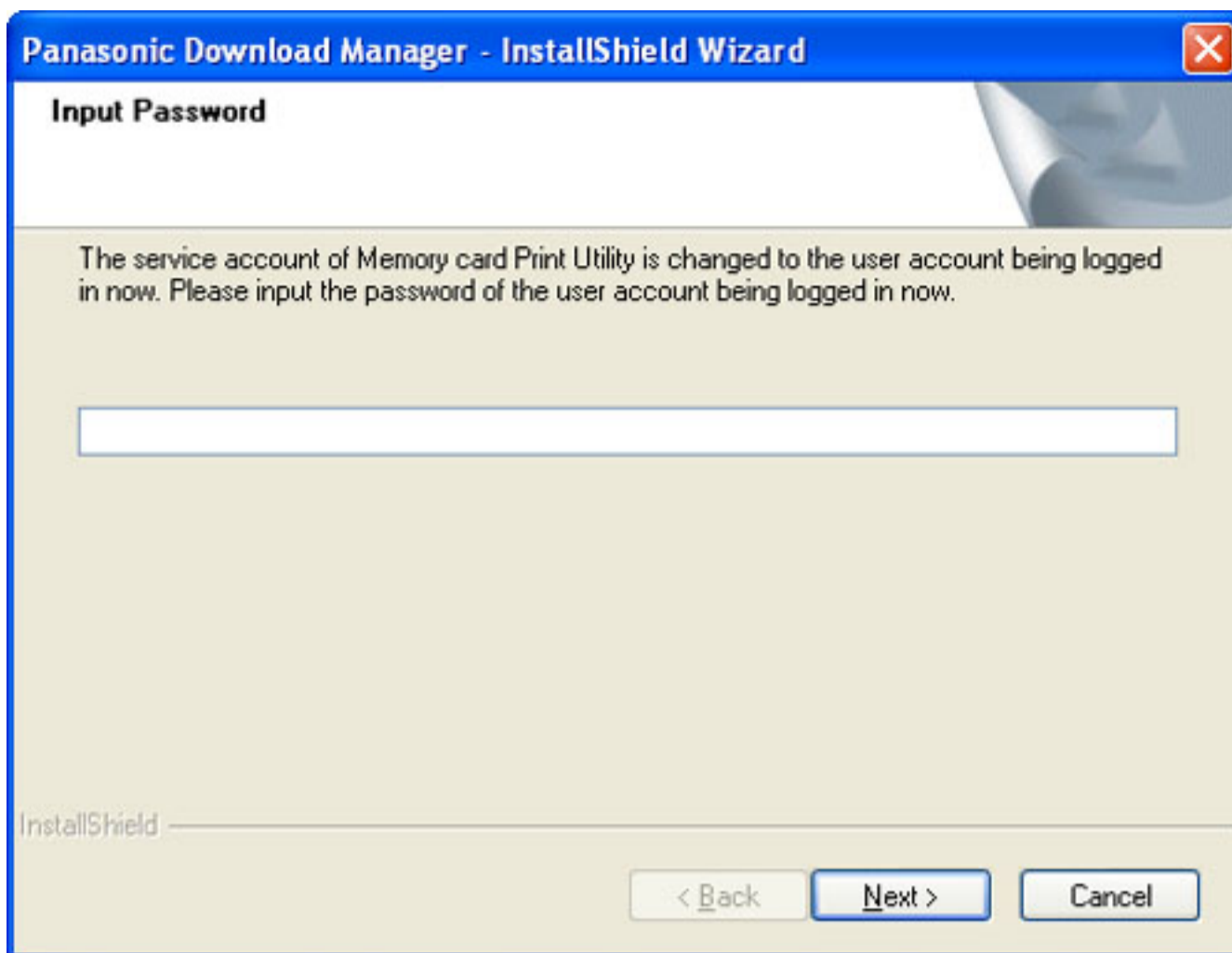
Installation Starts.

During the installation, the progress status appears. The installation may take several minutes.

10. Input the Administrator password.

The installed Memory Card Print Utility is registered in the server as a service account. Input the password of the account (Administrator) on which you are currently logged in.

Input Password screen



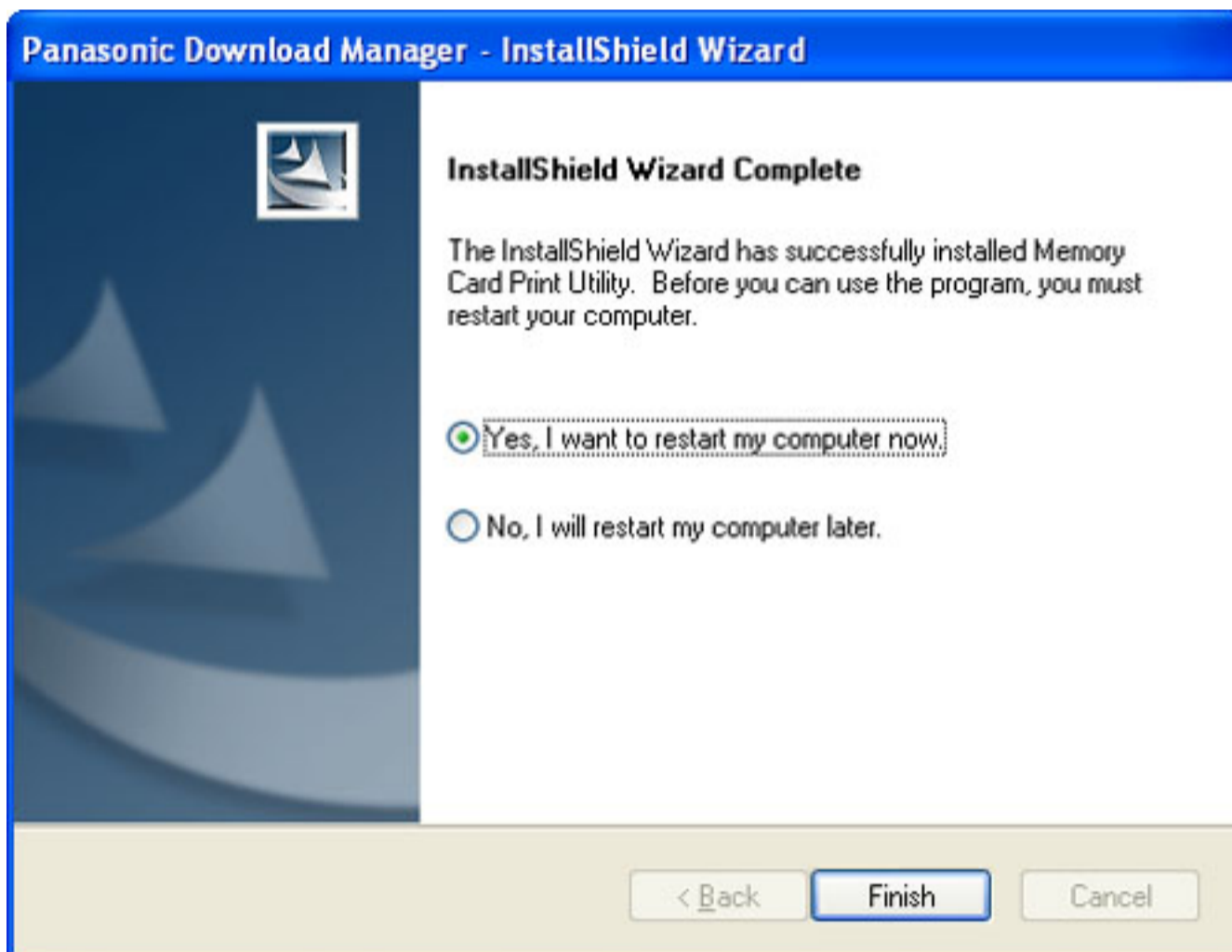
Always input the password of the Administrator if using Windows Server 2003, Windows XP Professional or Windows Vista, Windows Server 2008. The service will not execute if the Administrator password is left blank.

11. Completing the installation.

When the installation completes, the InstallShield Wizard Complete screen appears. Click the **Finish** button.

The server then restarts to complete the installation process.

InstallShield Wizard Complete screen



Note:

The Memory Card Print Utility cannot be used until the PC restarts, and the "Setting Service" procedure is performed after installation.

Uninstalling the Memory Card Print Utility

Use the Windows Add or Remove Programs function to uninstall the Memory Card Print Utility.

1. Select Add or Remove Programs on the Control Panel.

Windows 2000:

Click the "Start". Select "Settings", "Control Panel", then "Add / Remove Programs".

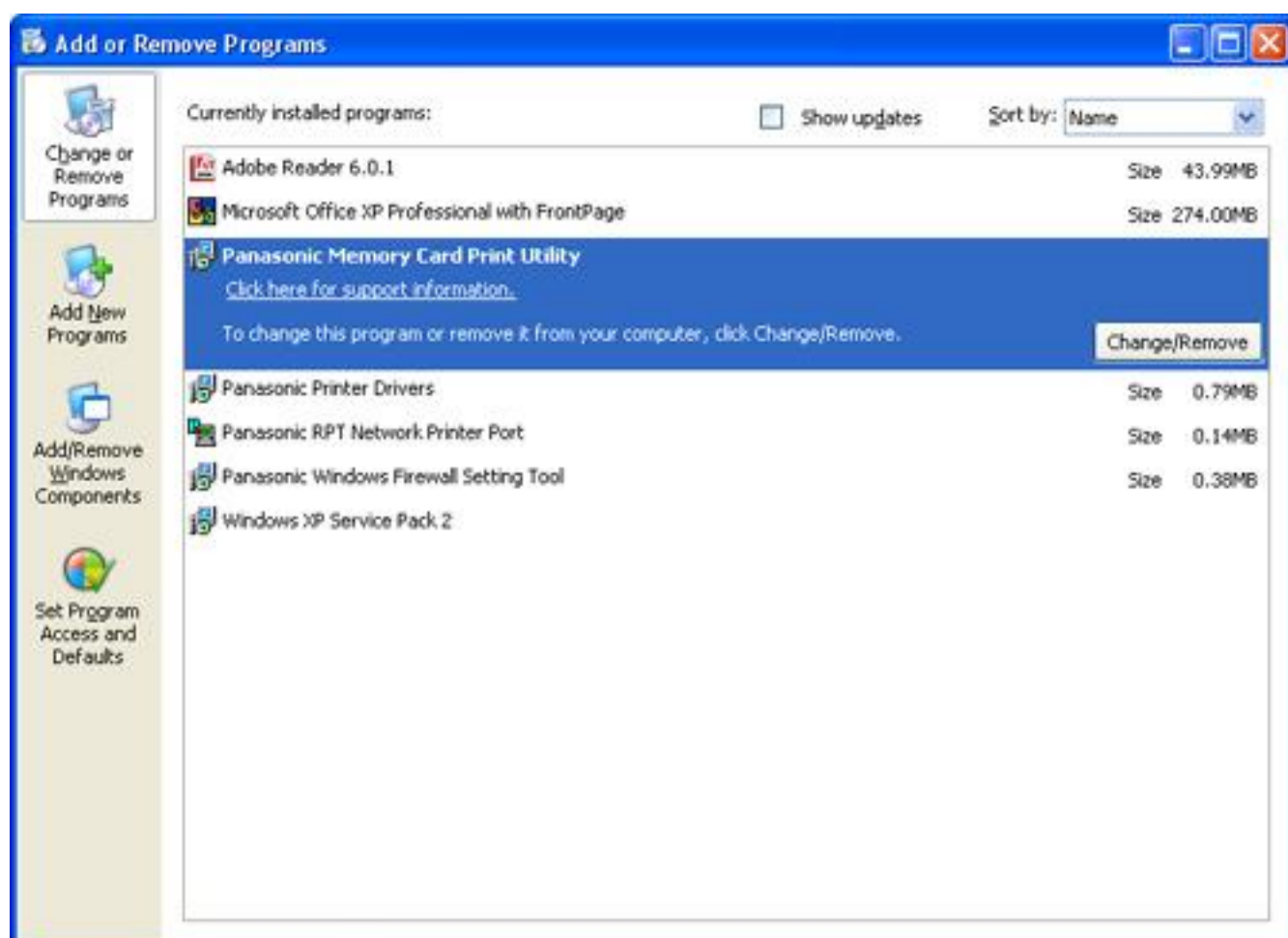
Windows XP / Windows Server 2003:

Click the "Start". Select "Control Panel", then "Add or Remove Programs".

Windows Vista / Windows Server 2008:

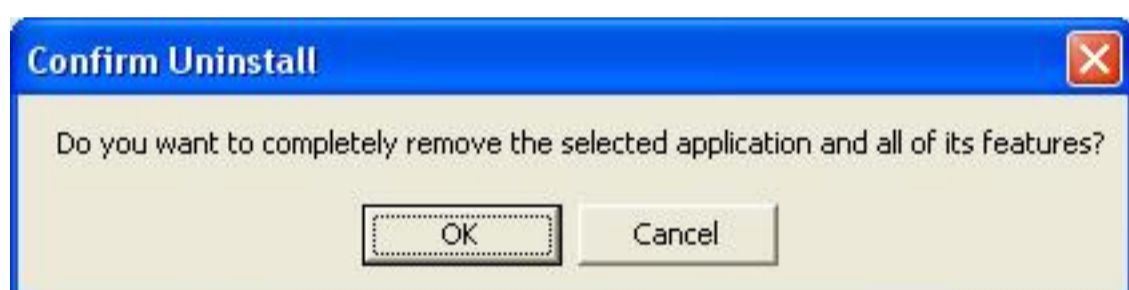
Click the "Start". Select "Control Panel", then "Uninstall a program".

2. Select **Panasonic Memory Card Print Utility** in the list of programs. Click the **Change/Remove (Uninstall/Change** for Windows Vista).



3. Click the **OK** button in the confirm deletion.

A confirmation message appears asking whether to delete the application. Click the **OK** button.



4. Uninstallation is completed.

A completion message appears to indicate that uninstallation has completed.

Remove the CD-ROM from the drive, and click the **Finish** button. The computer restarts, and the uninstallation is completed.

