

## Security Alert Dialog Box

When installing the program with SSL selected, a Windows security alert dialog box may appear each time you open Internet Explorer®.

This section describes how to prevent the display of the security alert dialog box.

This program does not collect personal information or pose a security threat.

---

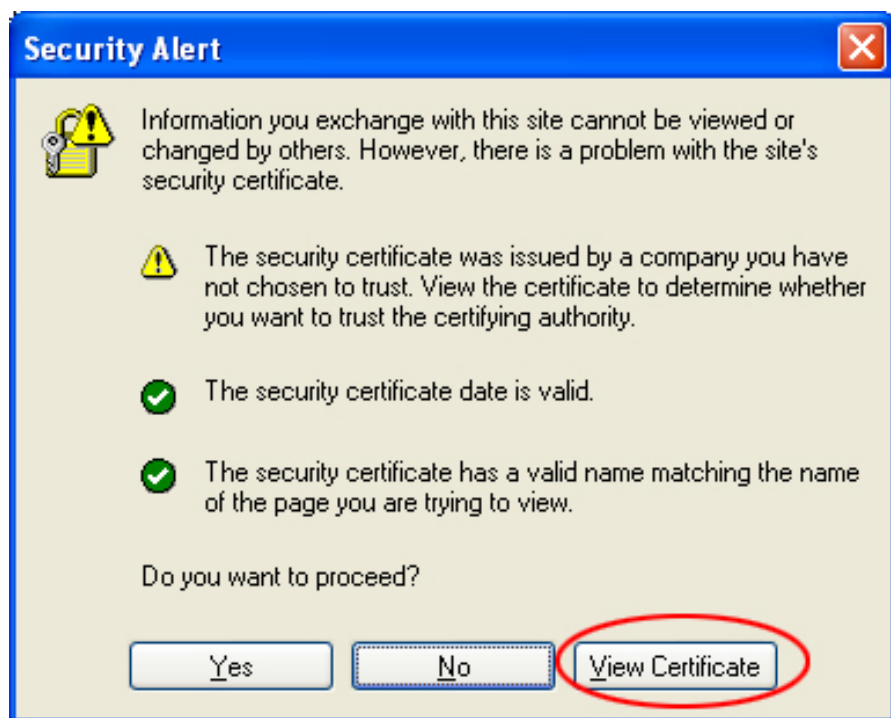
Using Microsoft® Internet Explorer® 6 (Windows® 2000/Windows® XP/Windows Server® 2003) .....	1
Using Windows® Internet Explorer® 7 (Windows® XP/ Windows Server® 2003) .....	8
Using Windows® Internet Explorer® 7 (Windows Vista™) .....	16

---

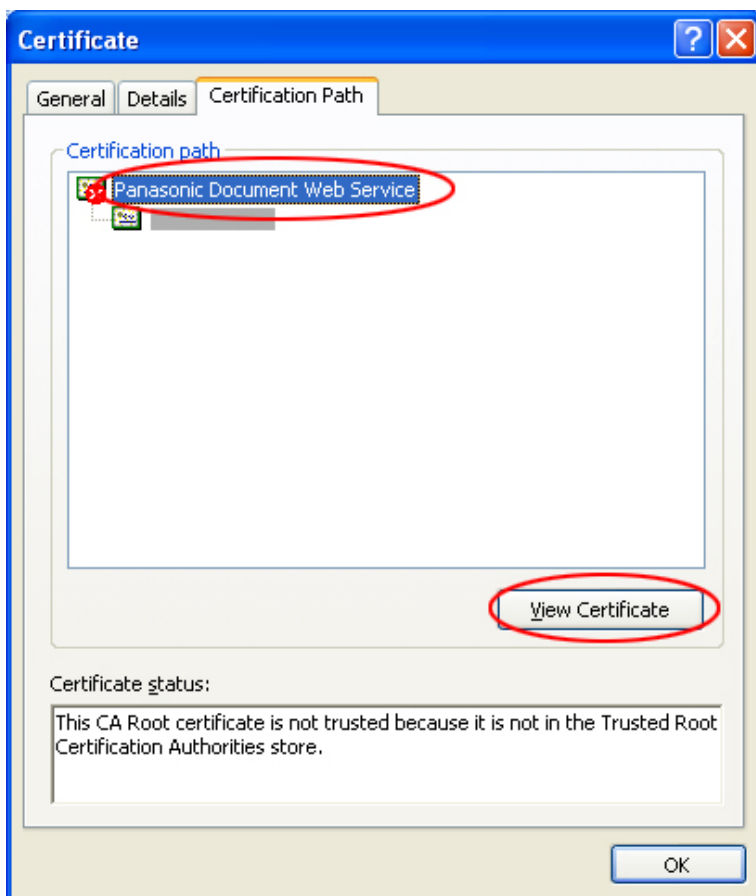
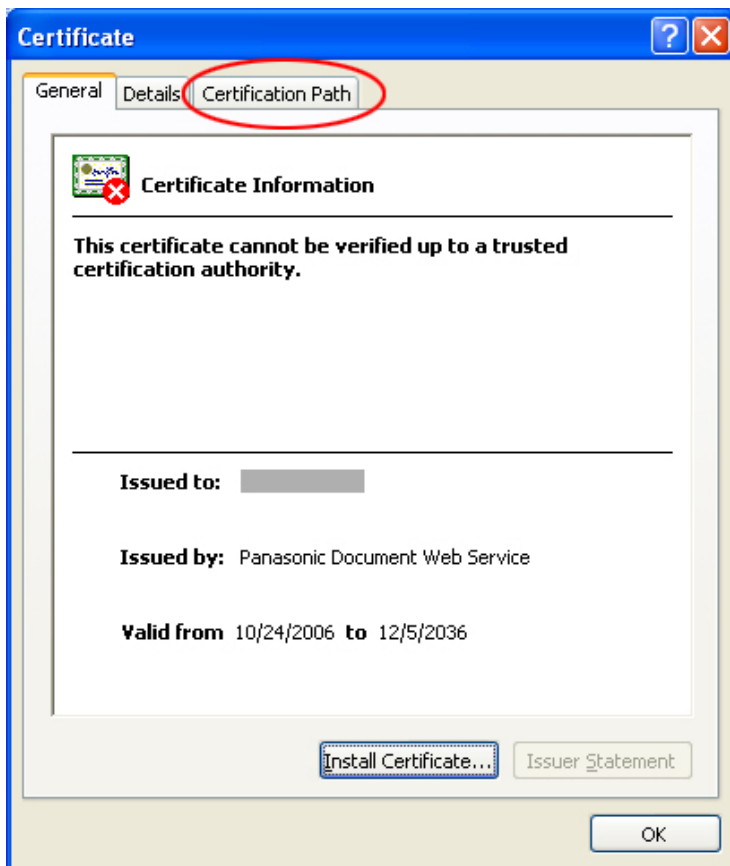
## Using Microsoft® Internet Explorer® 6 (Windows® 2000/ Windows® XP/ Windows Server® 2003)

---

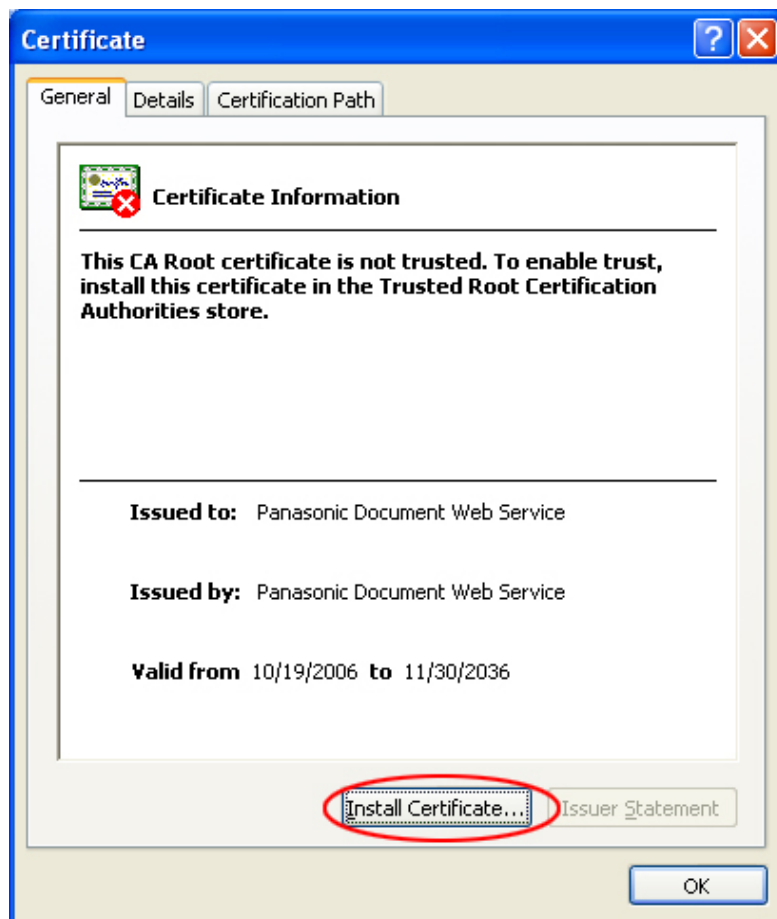
1. In the **Security Alert** window, click **View Certificate**.



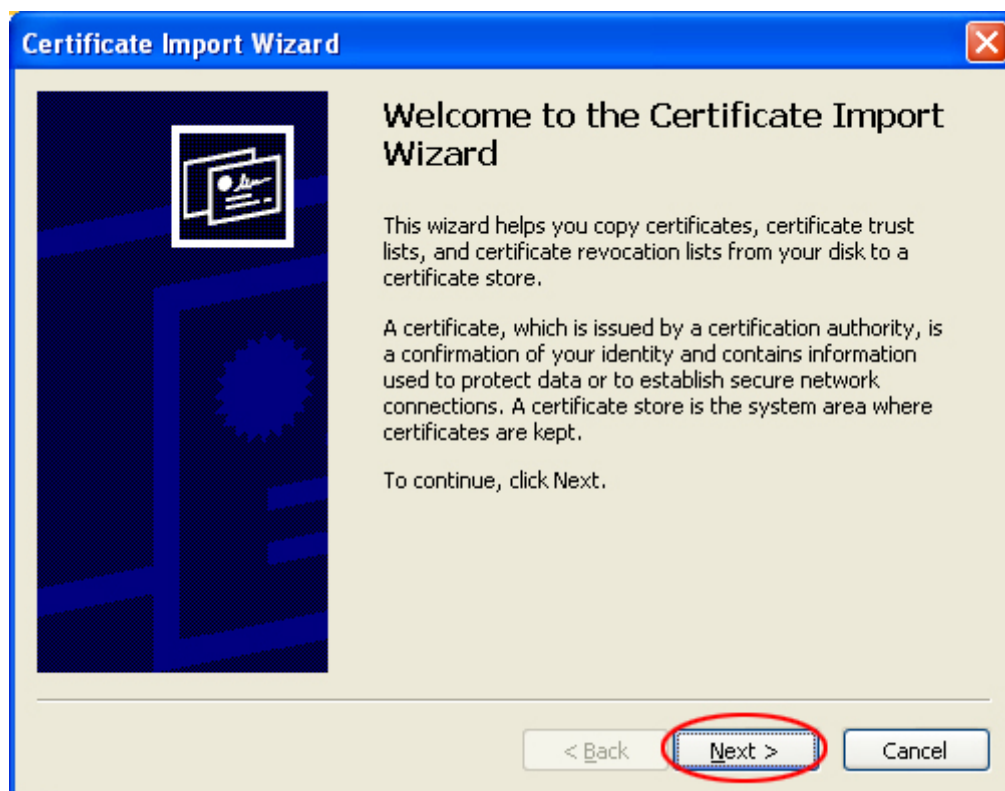
2. Select the **Certification Path** tab, select **Panasonic Document Web Service**, and click **View Certificate**.



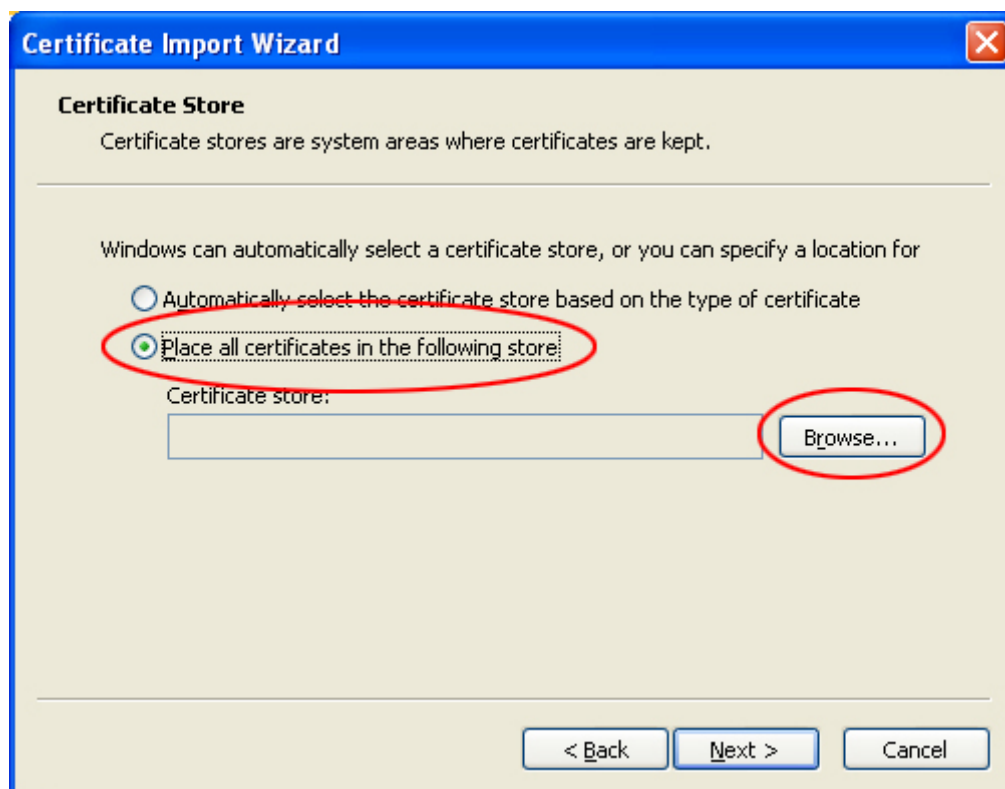
3. Click **Install Certificate...**



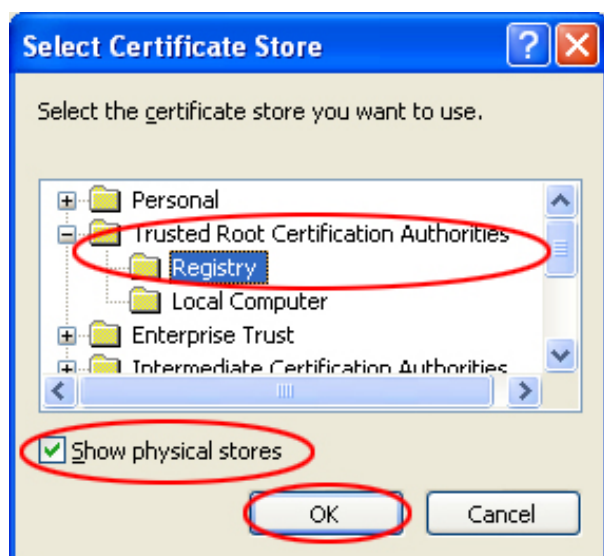
4. Click **Next** to open the **Certificate Import Wizard**.



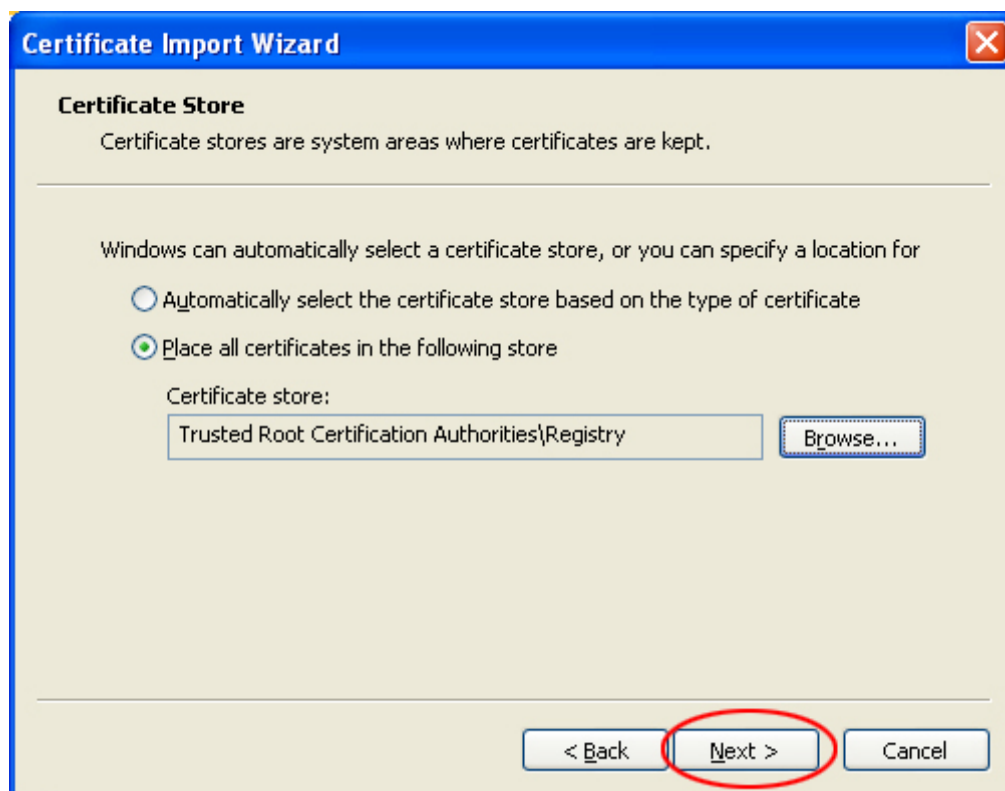
5. Select **Place all certificates in the following store**, and then click **Browse...**



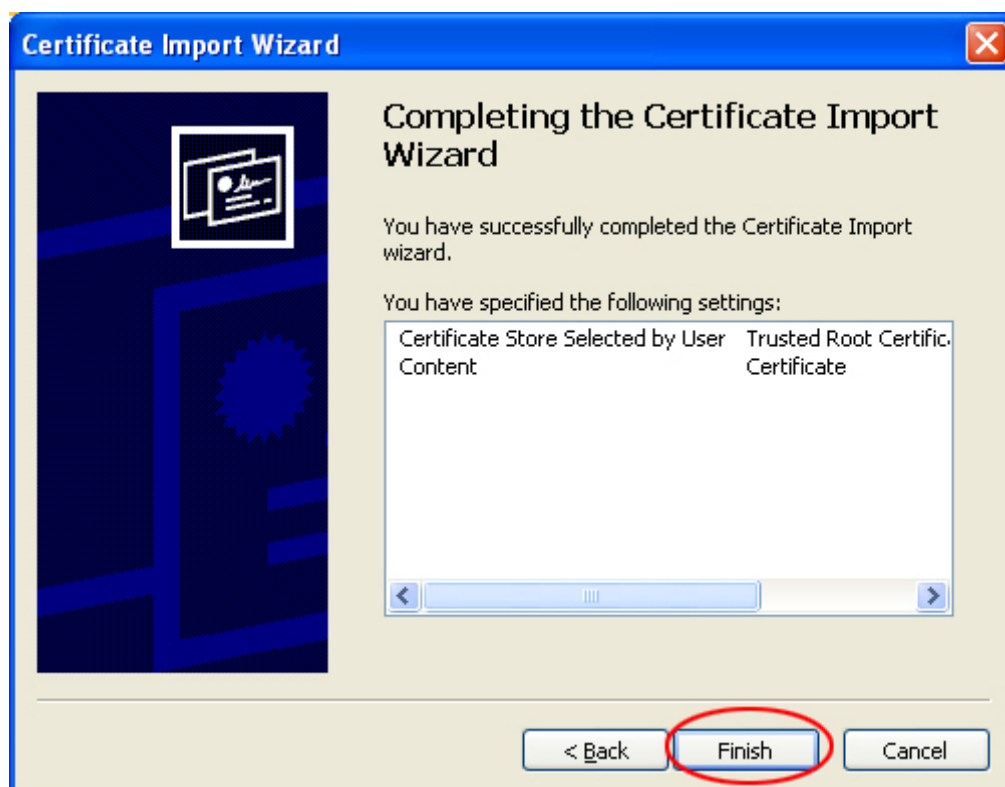
6. Select the **Show physical stores** checkbox, select the **Registry** folder under the **Trusted Root Certification Authorities** folder, and then click **OK**.



7. Click **Next**.



8. Click **Finish**.

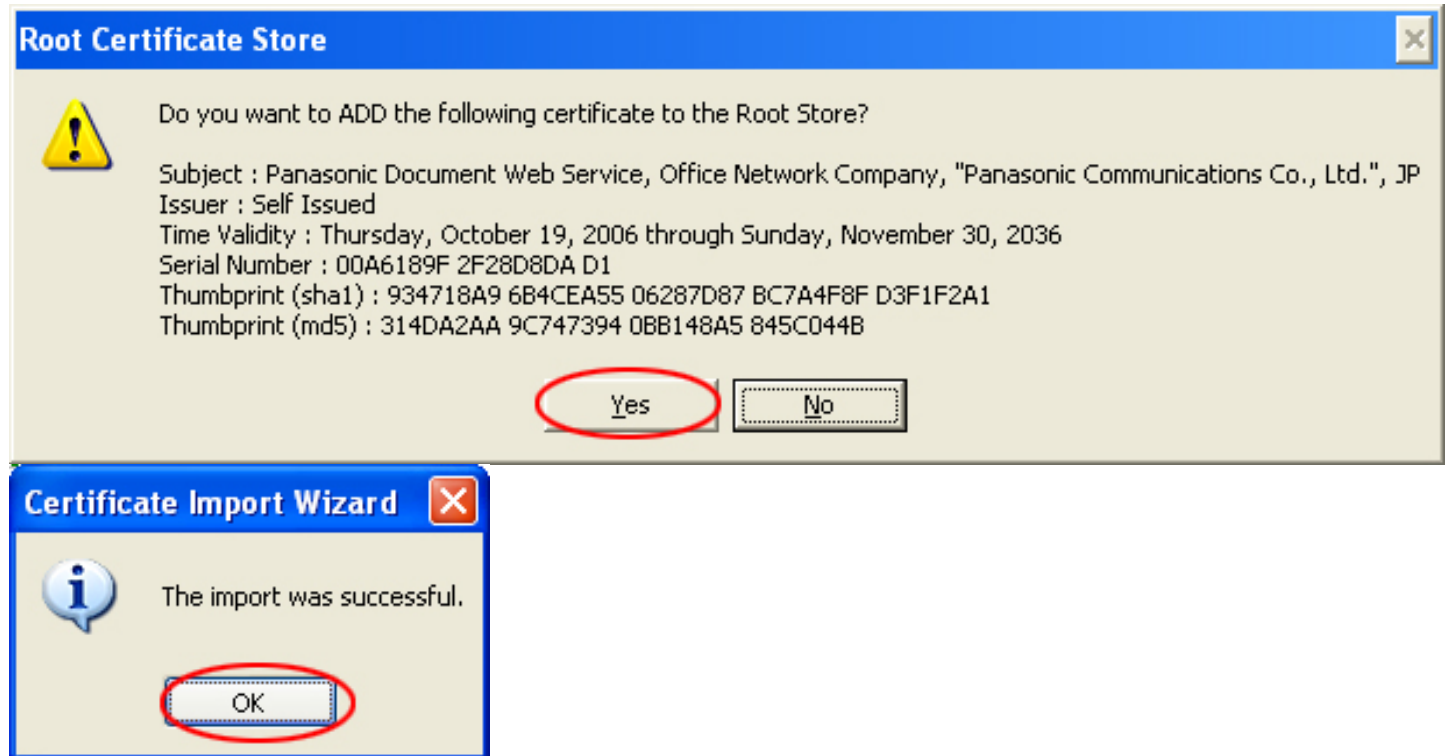


9. In the **Root Certificate Store** dialog box, click **Yes**, and then click **OK** in the next dialog box.

Check the certificate to ensure secure communications.

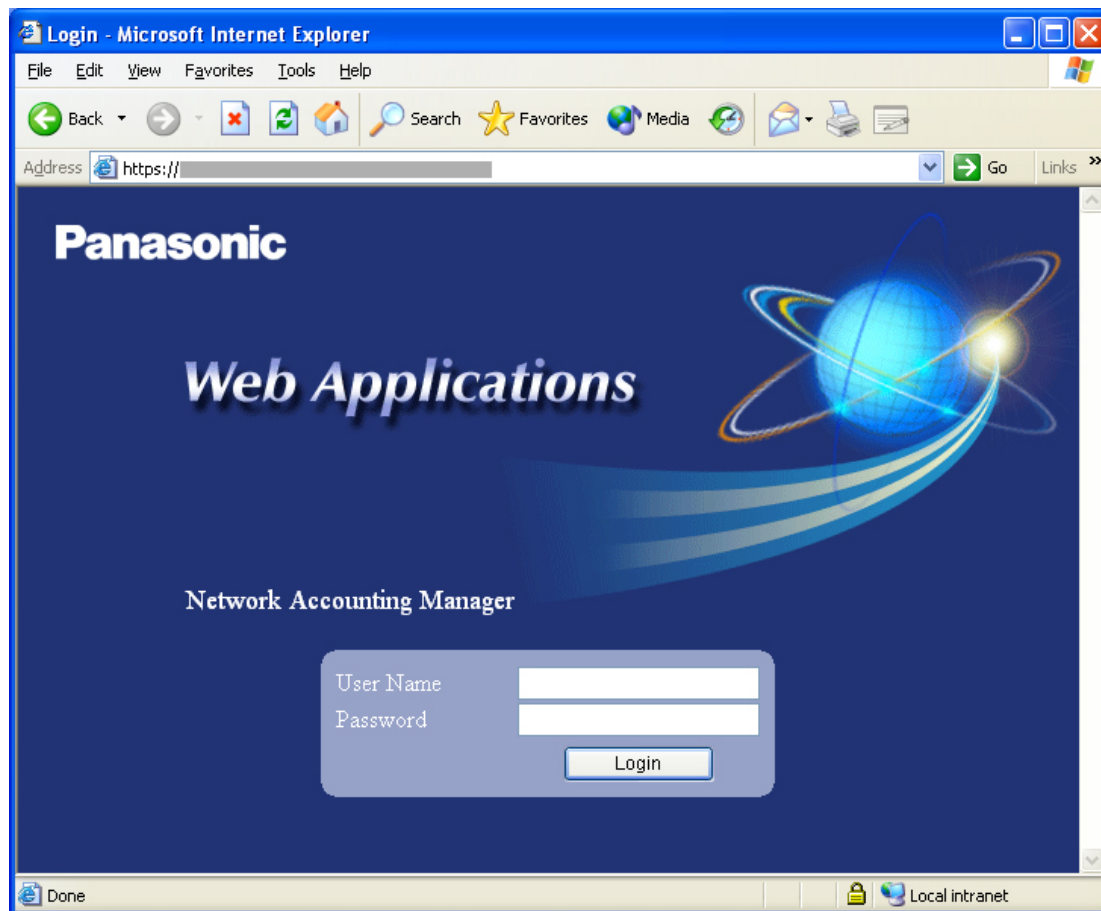
When installing the certificate, be sure to confirm the thumbprint. The correct thumbprint is as follows:

934718A9 6B4CEA55 06287D87 BC7A4F8F D3F1F2A1



10. Close Internet Explorer®.

Internet Explorer® is now configured not to display the security alert dialog box.



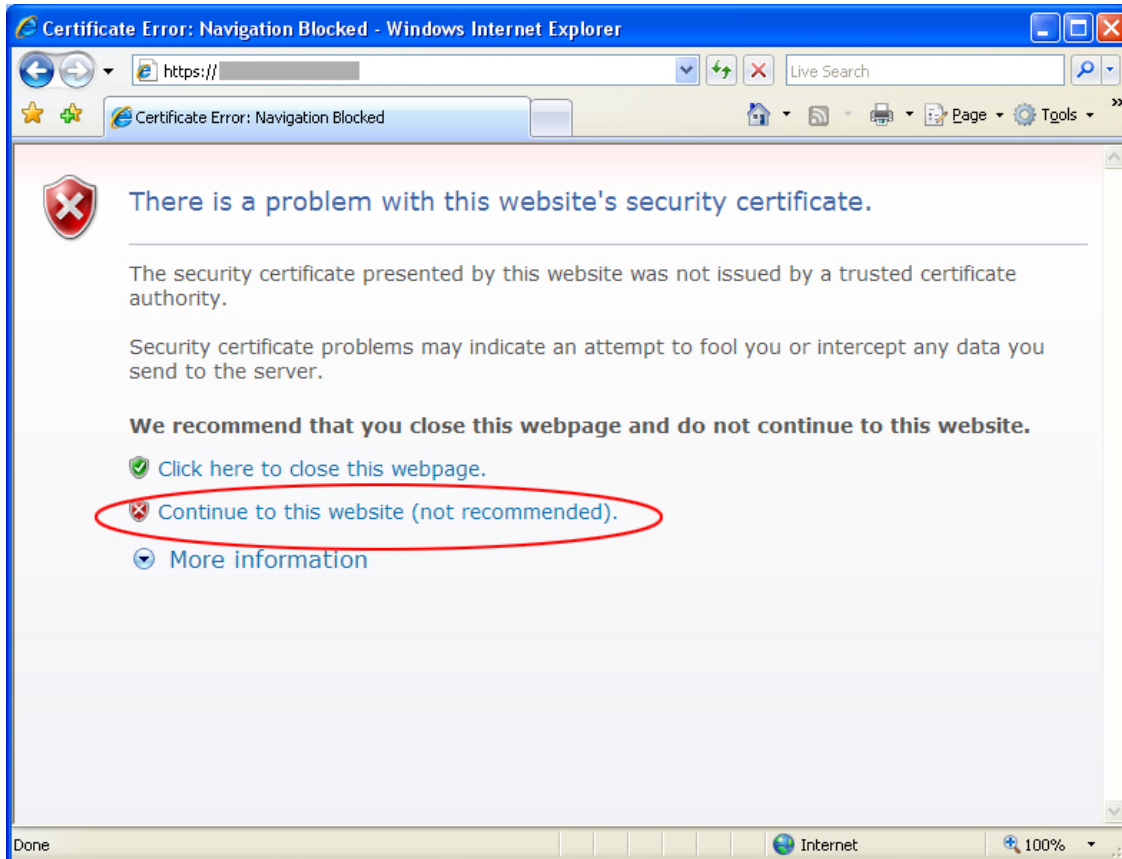
---

# Using Windows® Internet Explorer® 7

## (Windows® XP/Windows Server® 2003)

---

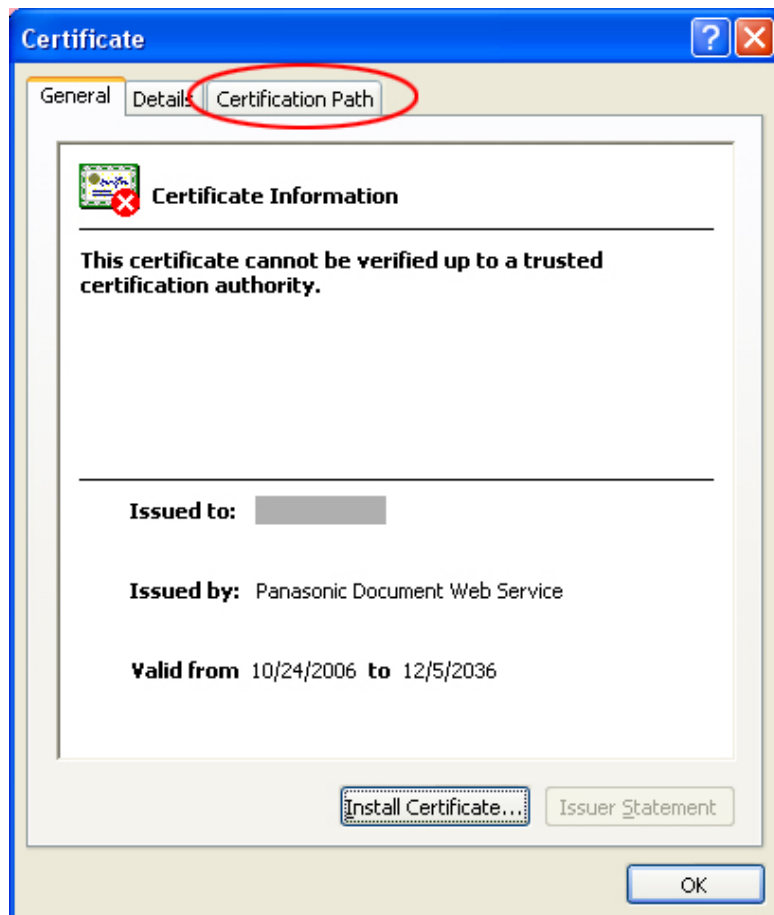
1. In the **Certificate Error** screen, click **Continue to this website (not recommended)**.



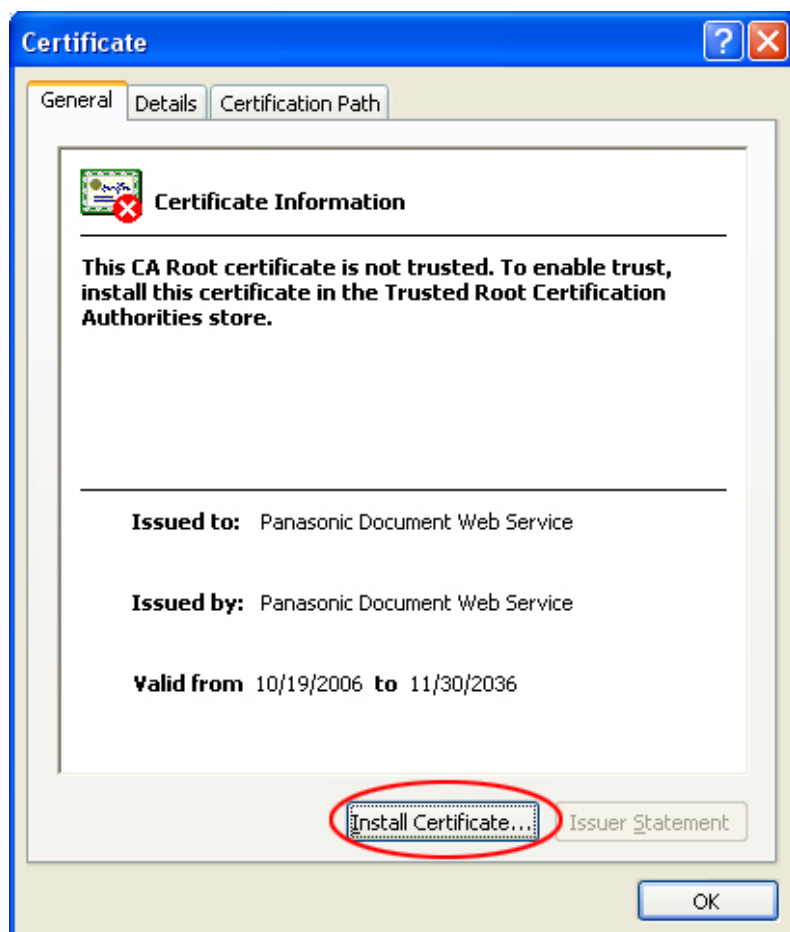
2. Click **Certificate Error** and **View certificates**.



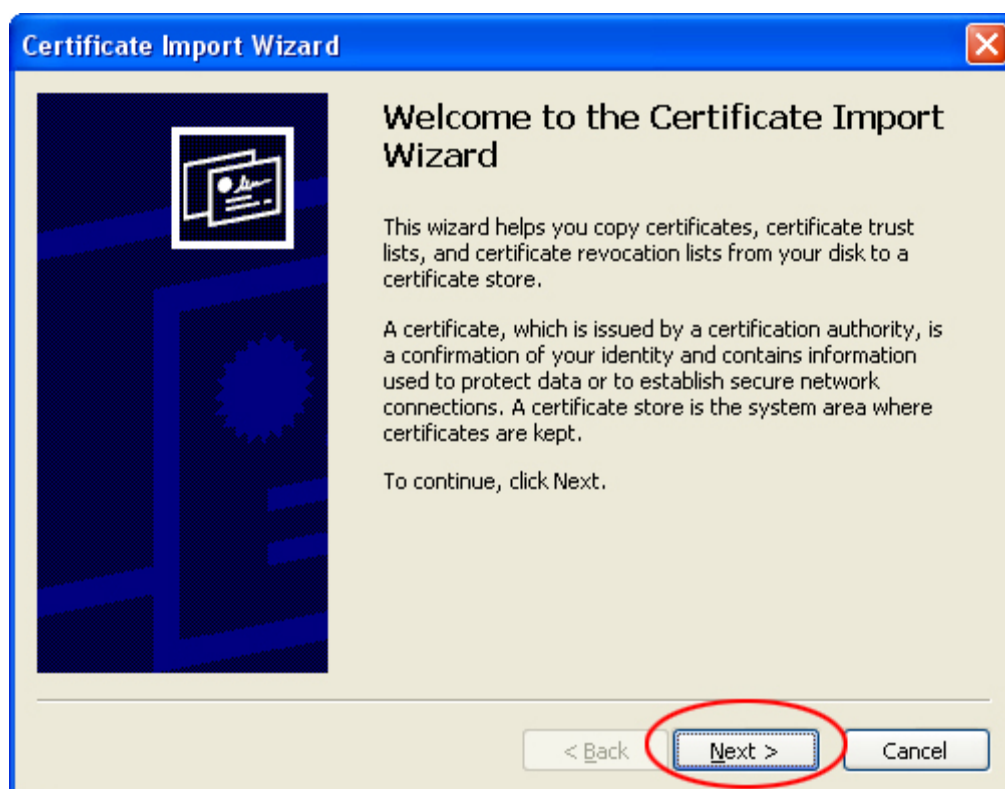
3. Select the **Certification Path** tab, select **Panasonic Document Web Service**, and click **View Certificate**.



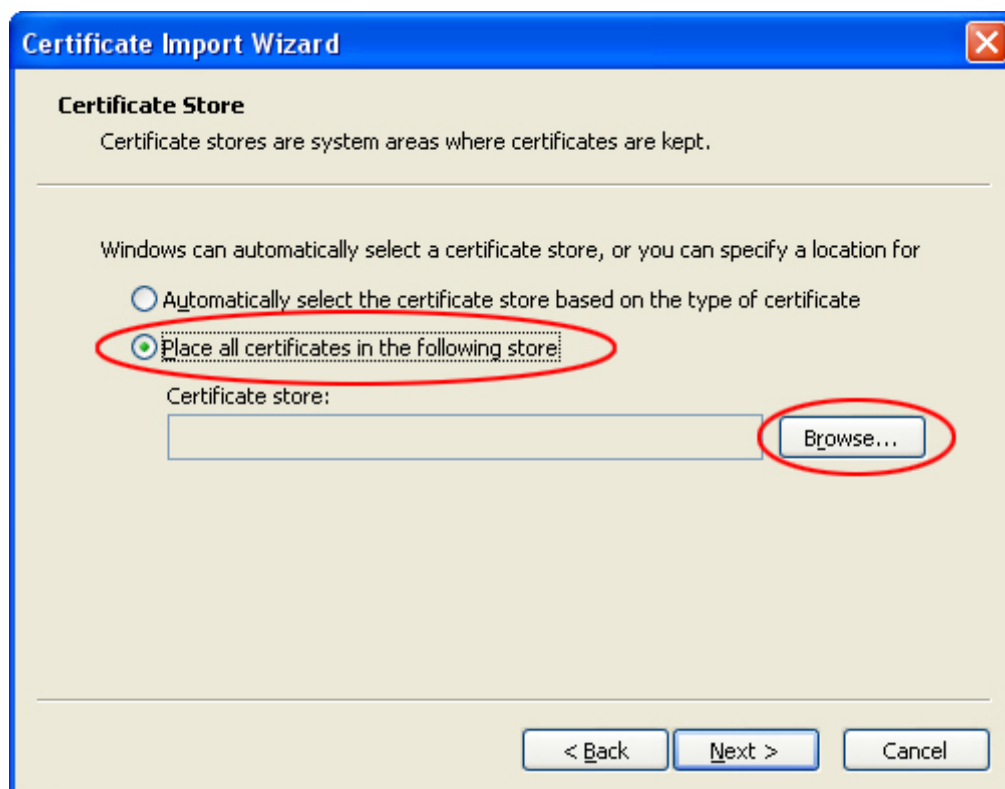
4. Click **Install Certificate...**



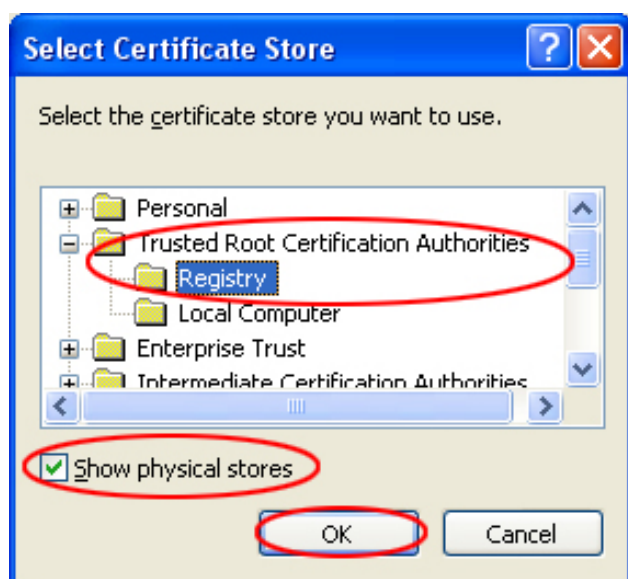
5. Click **Next** to open the **Certificate Import Wizard**.



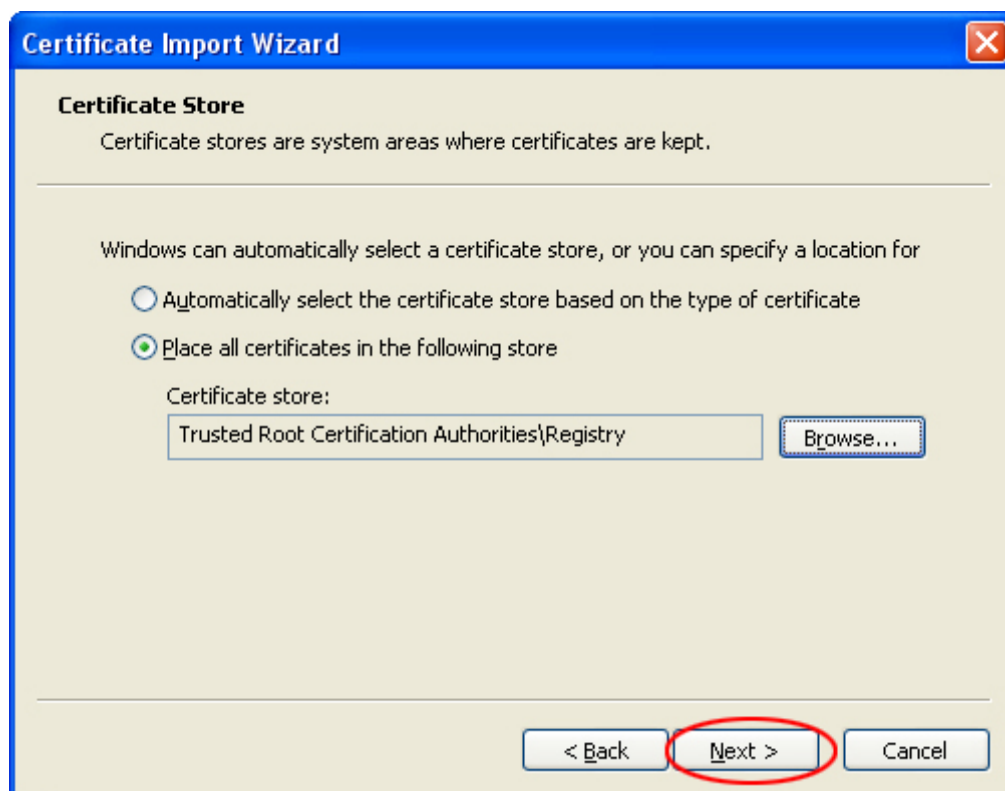
6. Select **Place all certificates in the following store**, and then click **Browse...**.



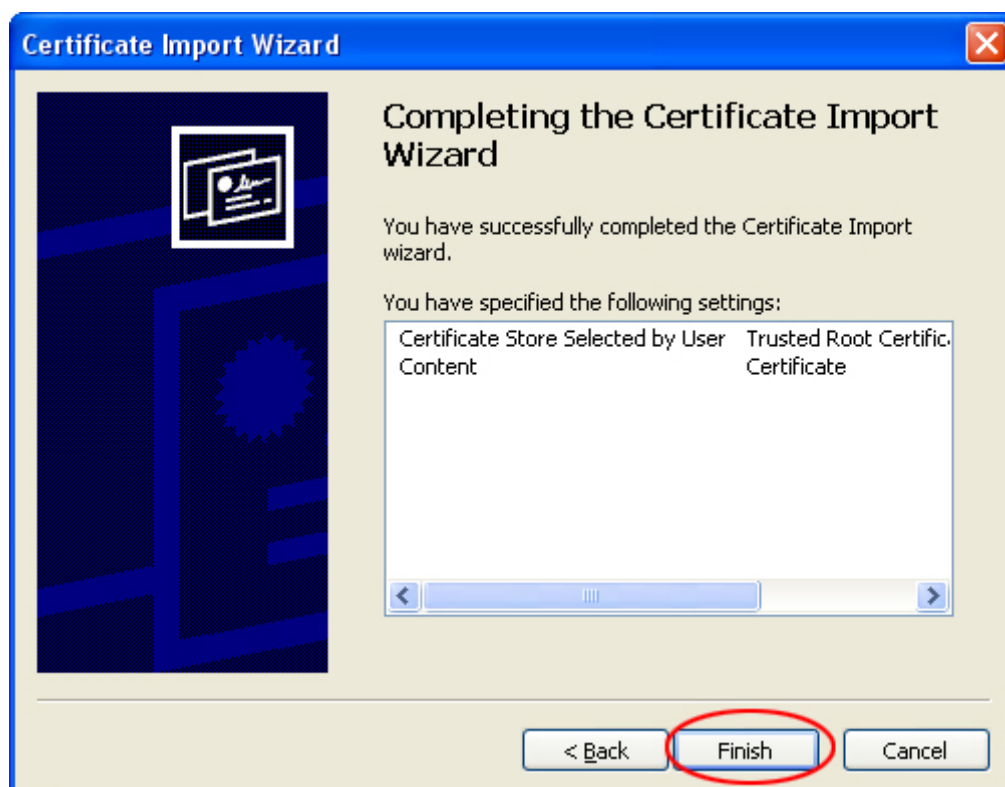
7. Select the **Show physical stores** checkbox, select the **Registry** folder under the **Trusted Root Certification Authorities** folder, and then click **OK**.



8. Click **Next**.



9. Click **Finish**.

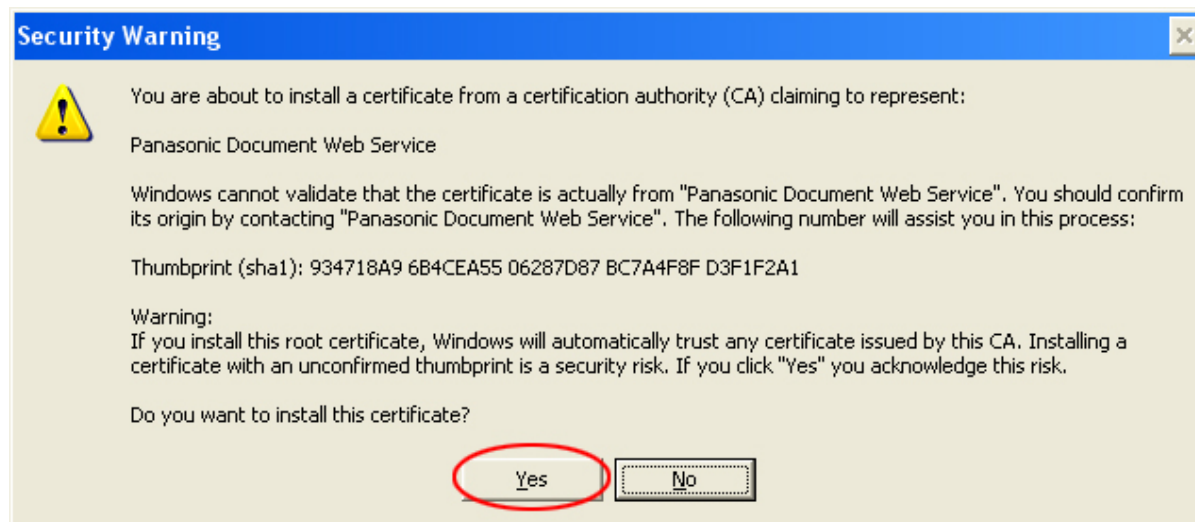


10. In the **Root Certificate Store** dialog box, click **Yes**, and then click **OK** in the next dialog box.

Check the certificate to ensure secure communications.

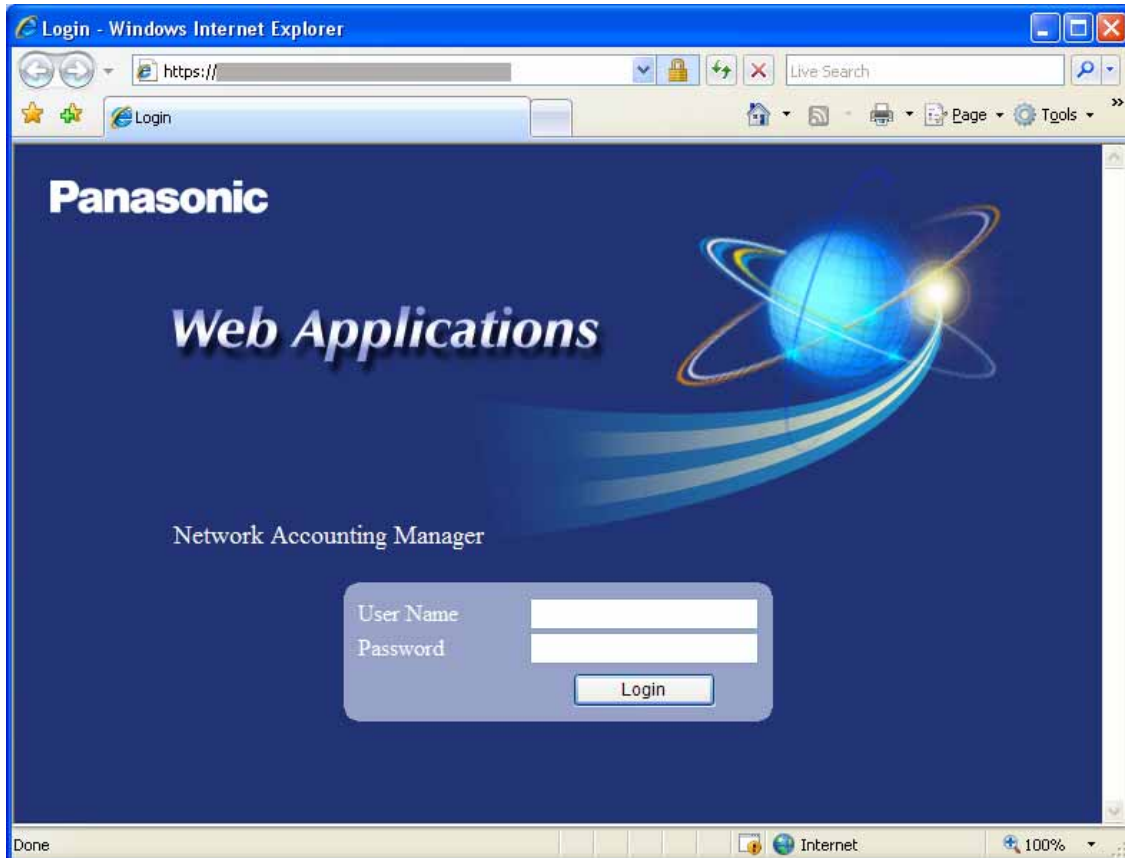
When installing the certificate, be sure to confirm the thumbprint. The correct thumbprint is as follows:

934718A9 6B4CEA55 06287D87 BC7A4F8F D3F1F2A1



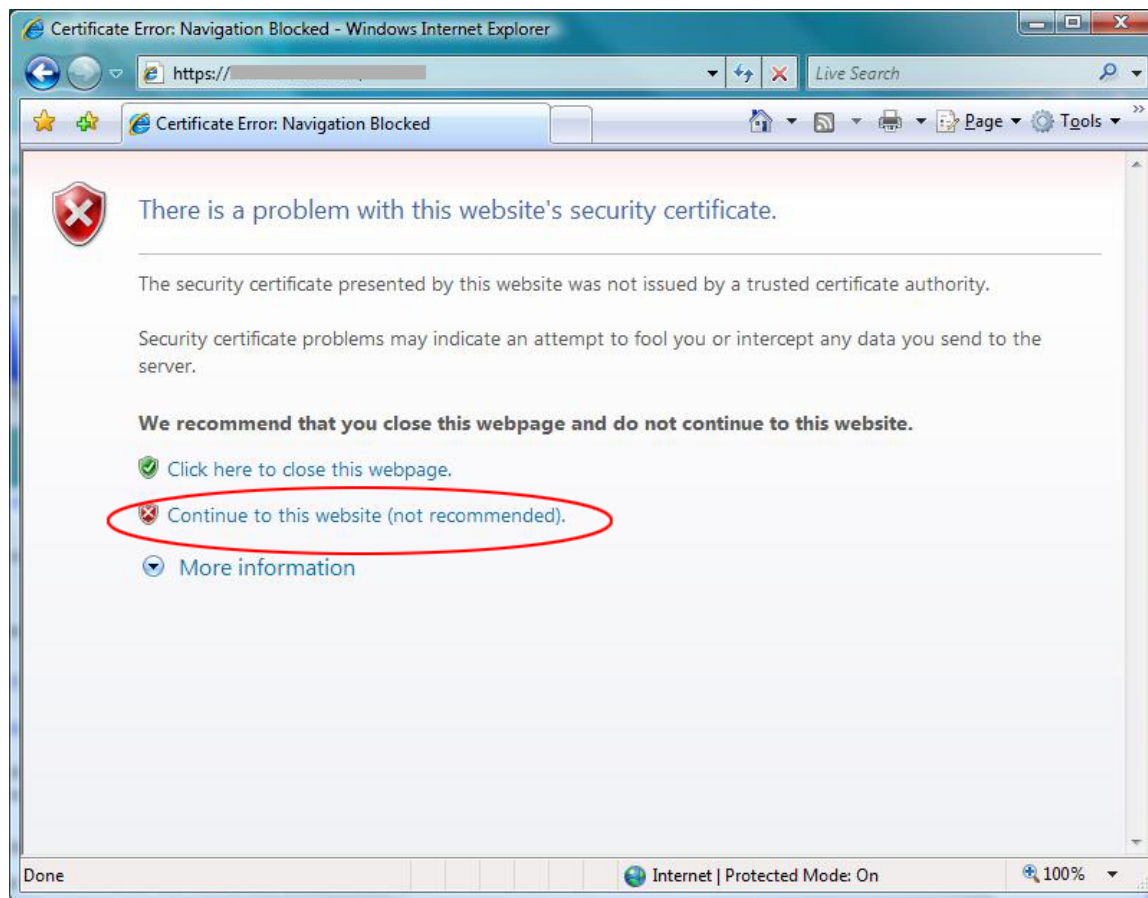
11. Close Internet Explorer®.

Internet Explorer® is now configured not to display the security alert dialog box.

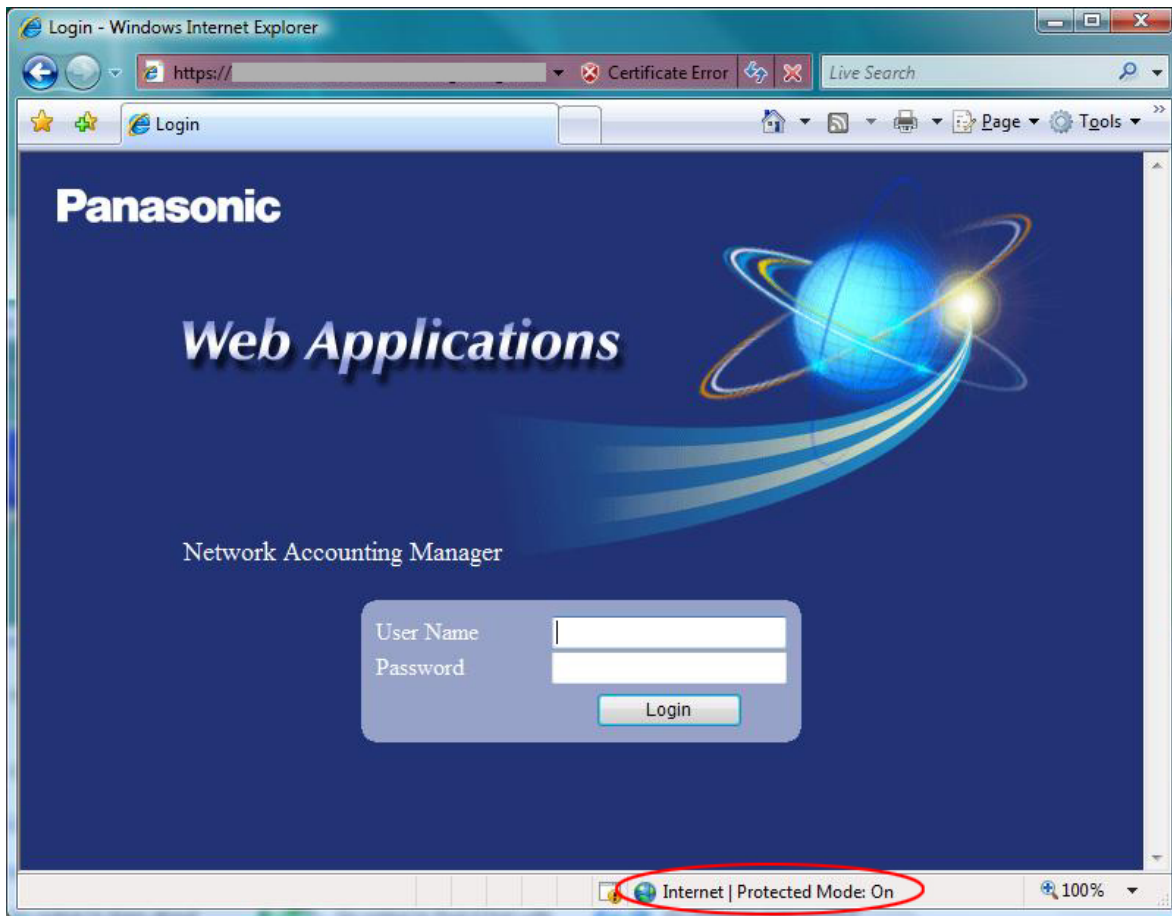


# Using Windows® Internet Explorer® 7 (Windows Vista™)

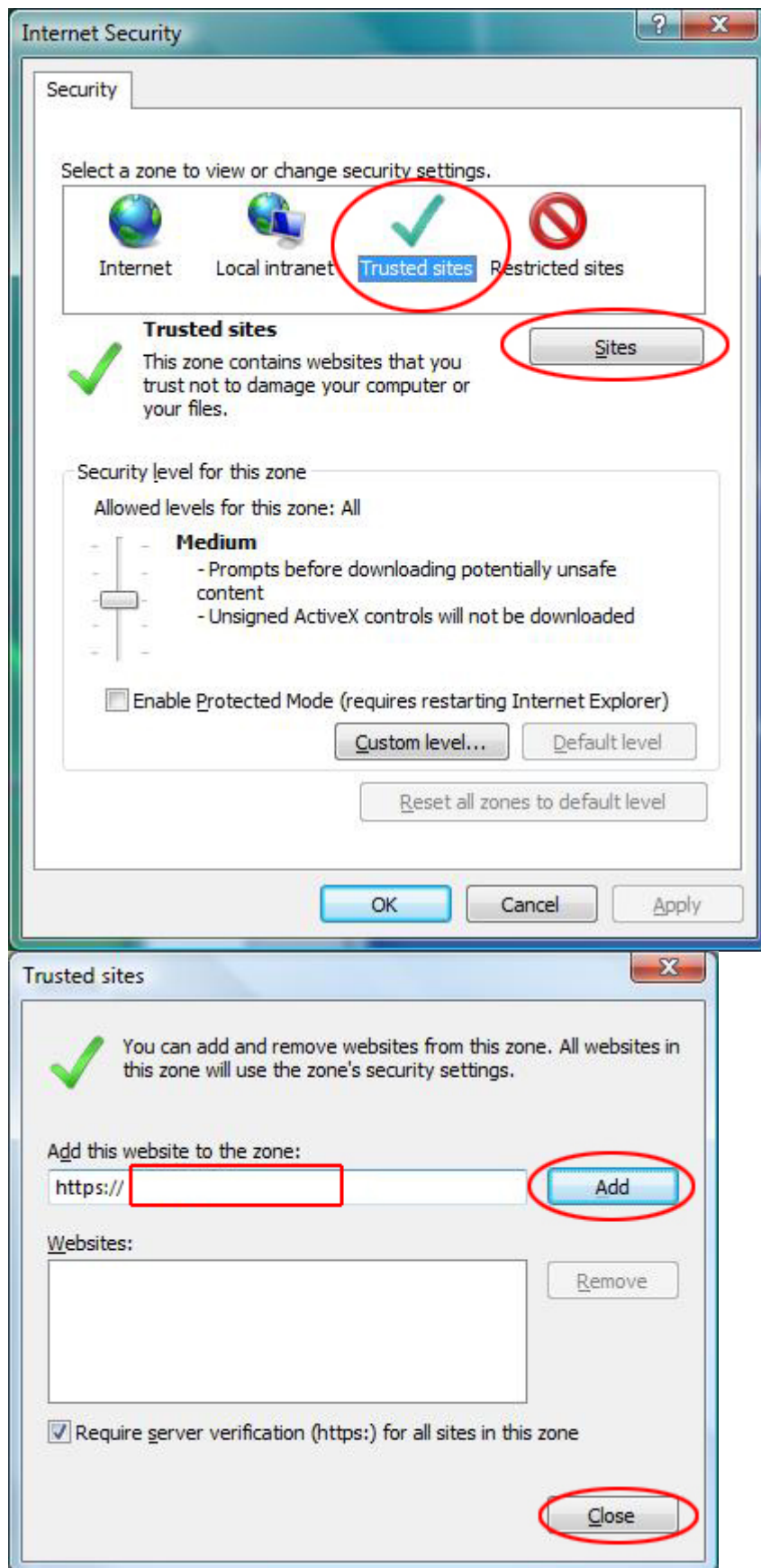
1. In the **Certificate Error** screen, click **Continue to this website (not recommended)**.



2. Double-click **Protected Mode** displayed in the status bar at the bottom of Internet Explorer®.

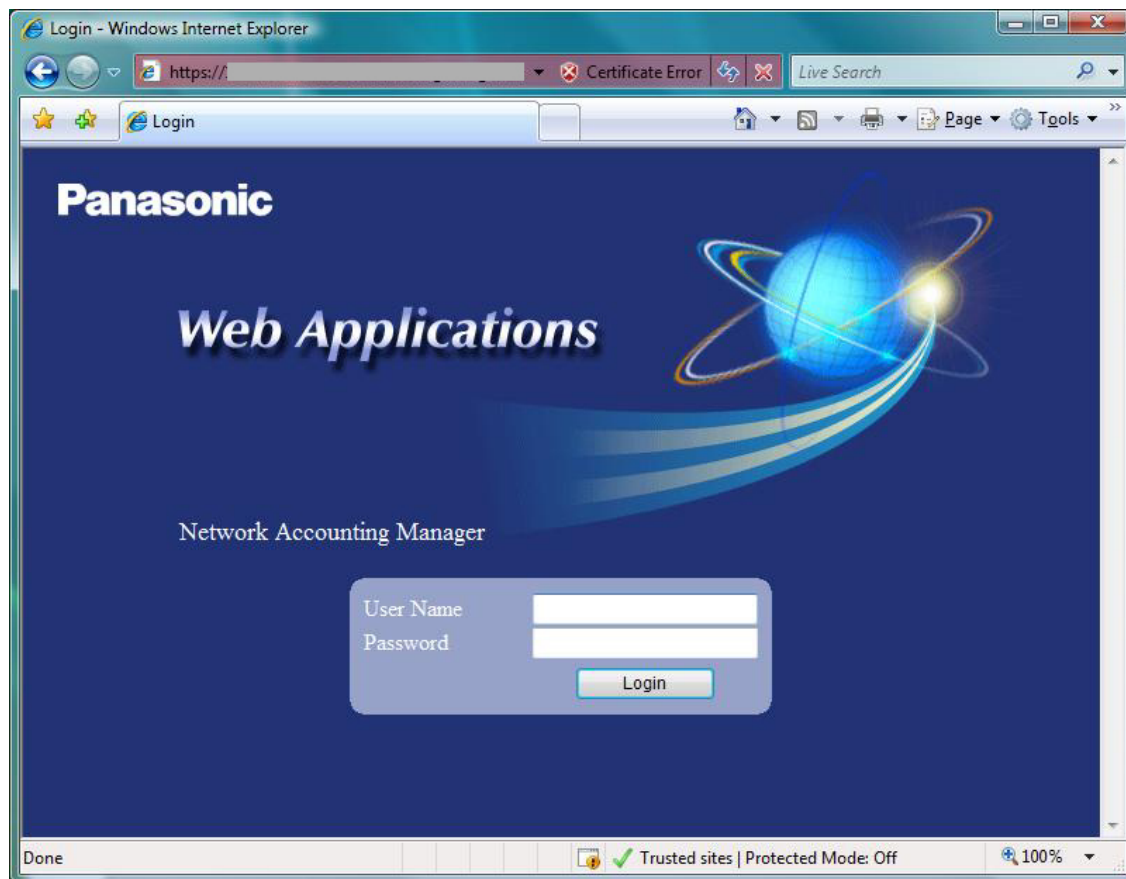


3. Add the address (https://<IP address of your server>) to your **Trusted sites**.



4. Close Internet Explorer®.

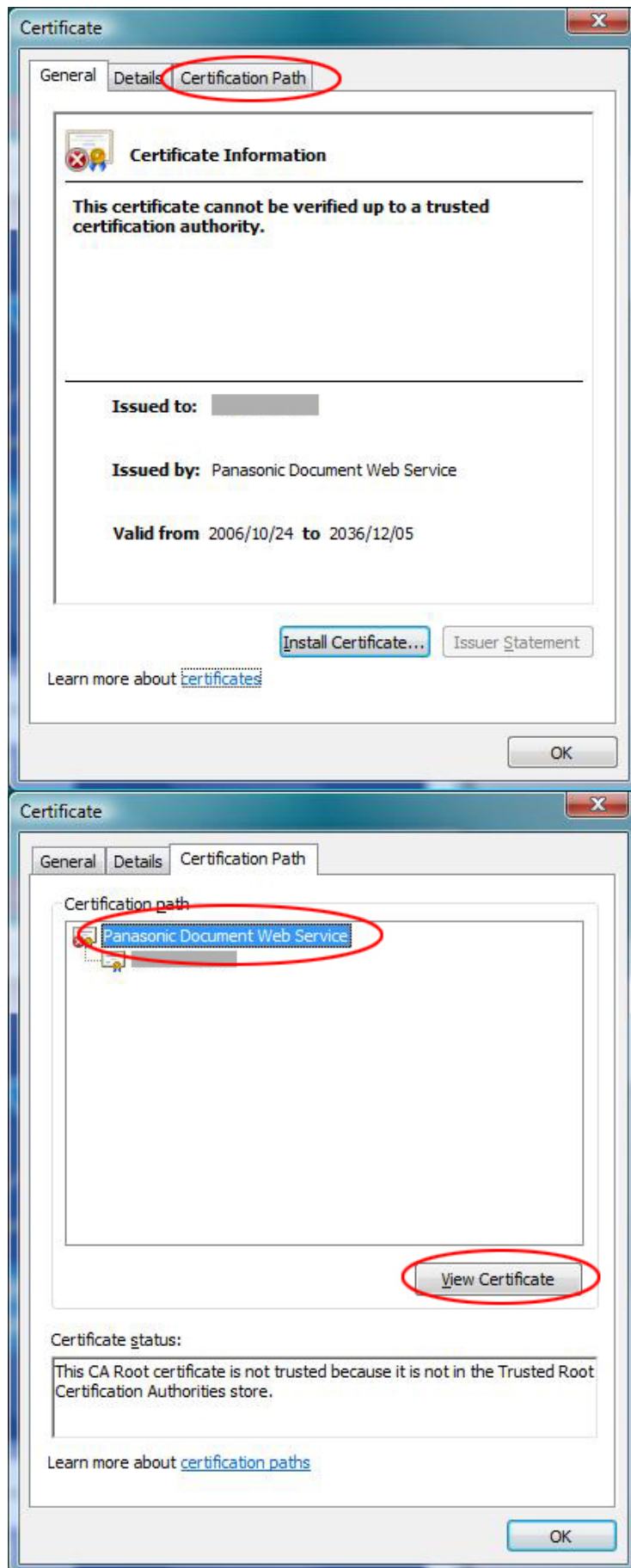
5. Open the program again in Internet Explorer® to display the following page.



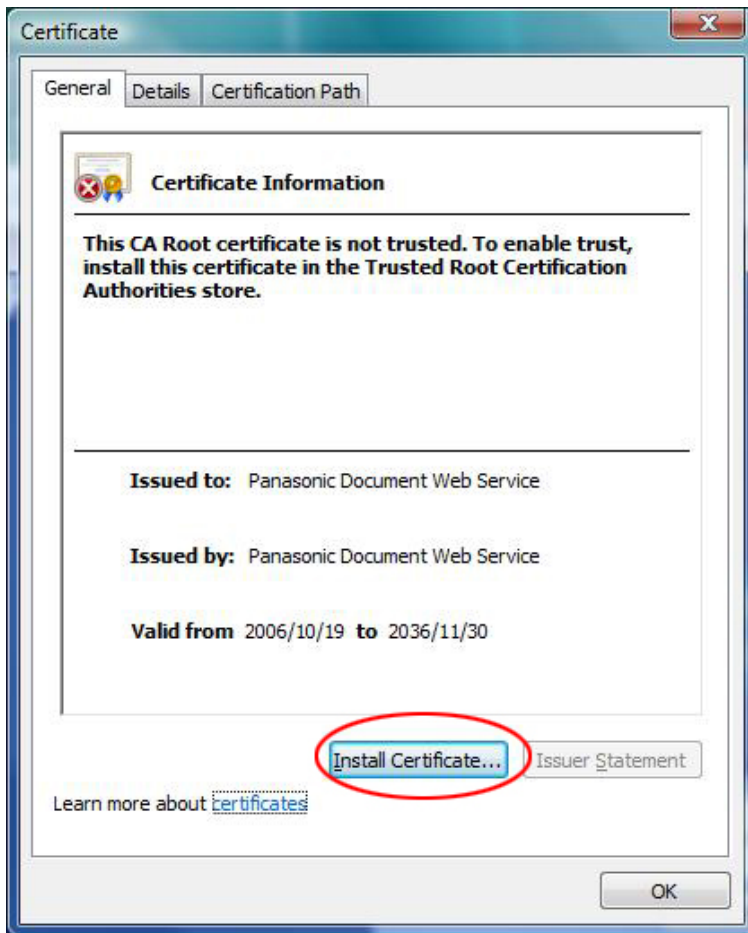
6. Click **Certificate Error** and **View certificates**.



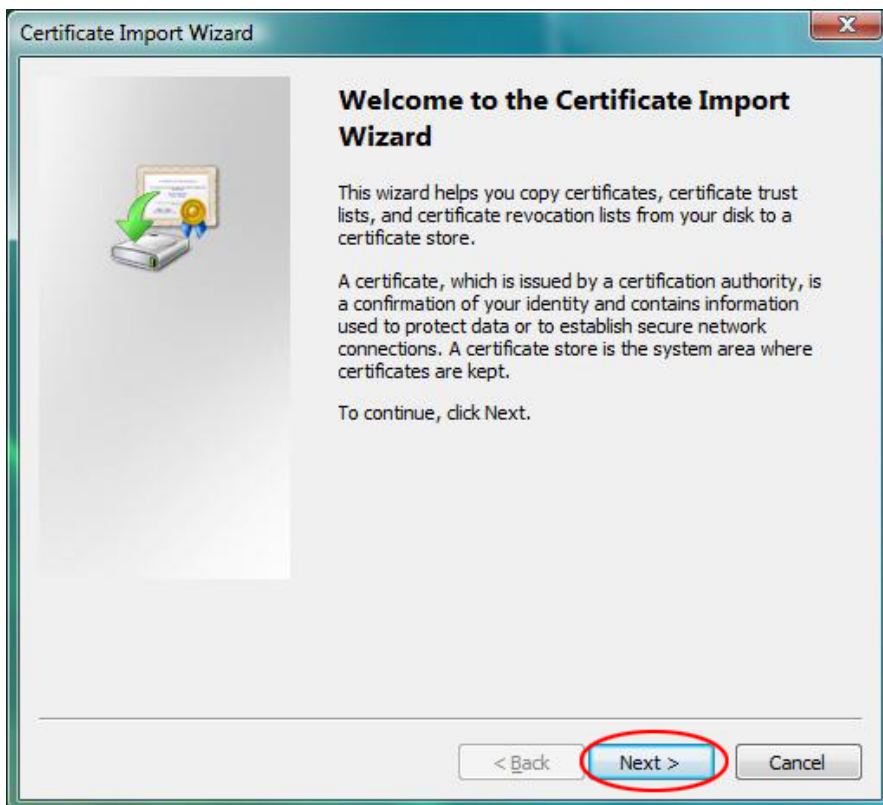
7. Select the **Certification Path** tab, select **Panasonic Document Web Service**, and click **View Certificate**.



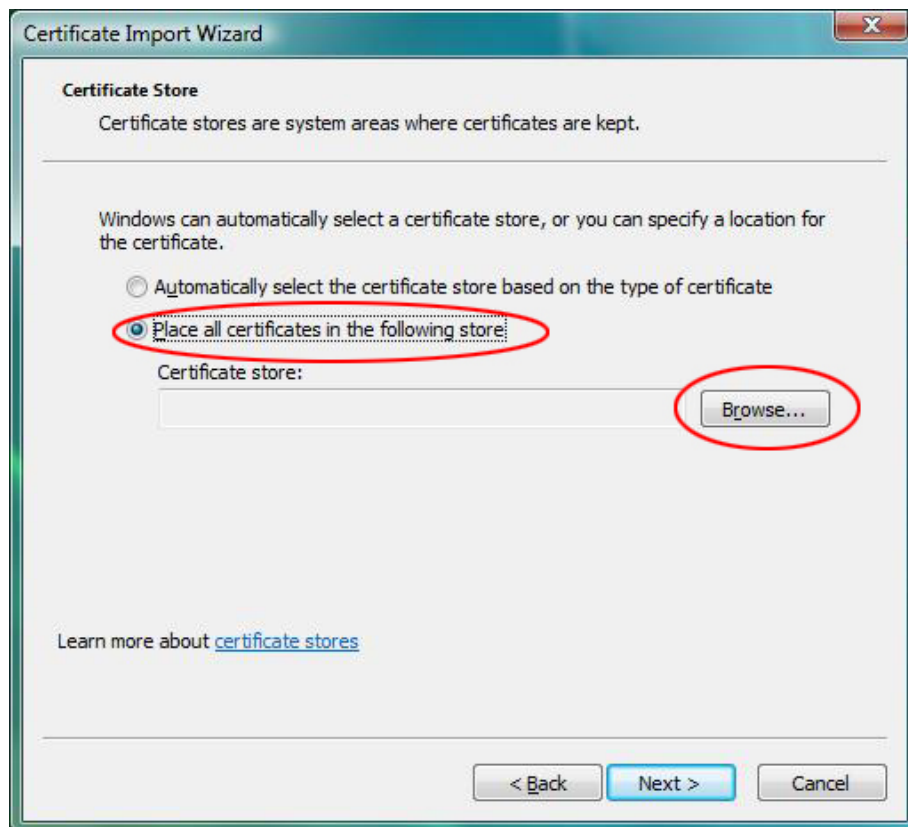
8. Click **Install Certificate...**



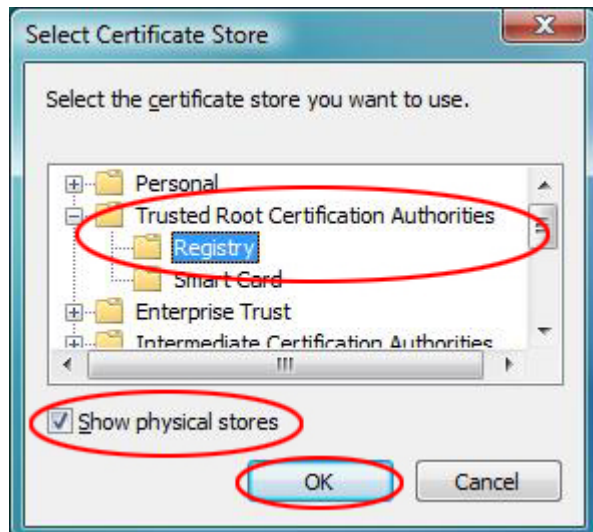
9. Click **Next** to open the **Certificate Import Wizard**.



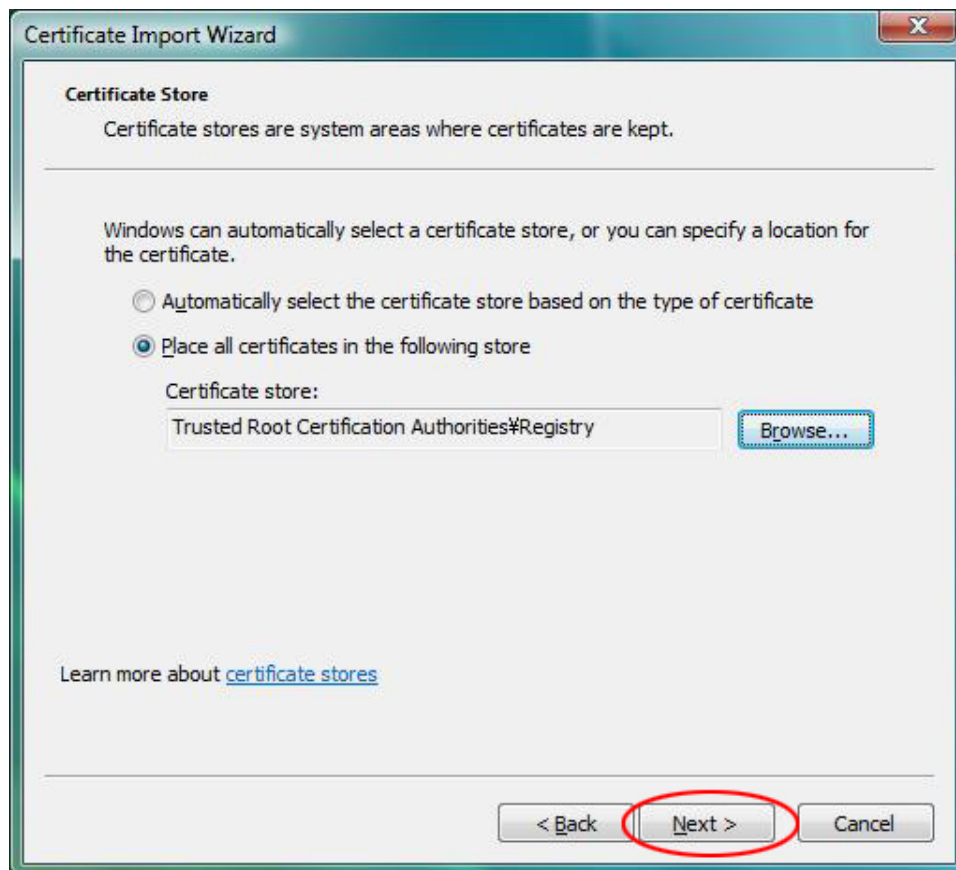
10. Select **Place all certificates in the following store**, and then click **Browse...**



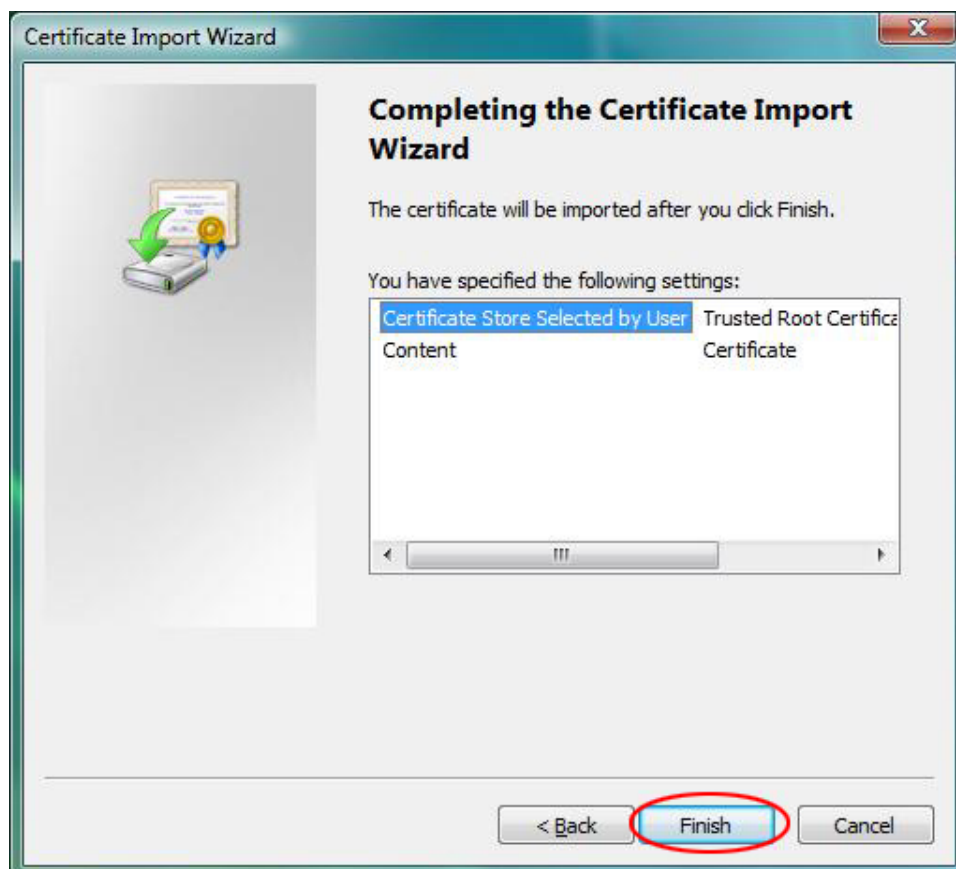
11. Select the **Show physical stores** checkbox, select the **Registry** folder under the **Trusted Root Certification Authorities** folder, and then click **OK**.



12. Click **Next**.



13. Click **Finish**.

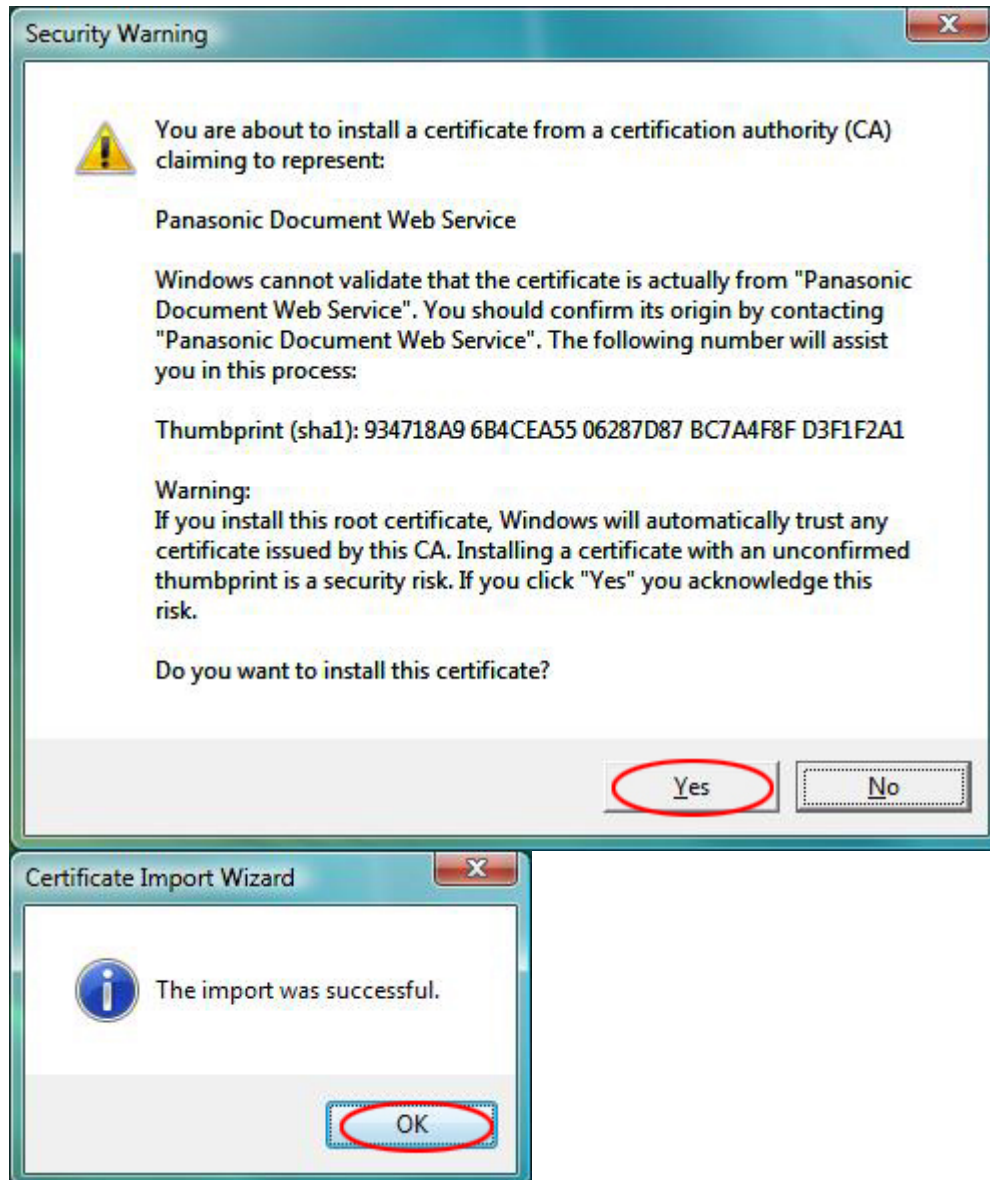


14. In the **Security Warning** dialog box, click **Yes**, and then click **OK** in the next dialog box.

Check the certificate to ensure secure communications.

When installing the certificate, be sure to confirm the thumbprint. The correct thumbprint is as follows:

934718A9 6B4CEA55 06287D87 BC7A4F8F D3F1F2A1



15. Close Internet Explorer®.

Internet Explorer® is now configured not to display the security alert dialog box.

