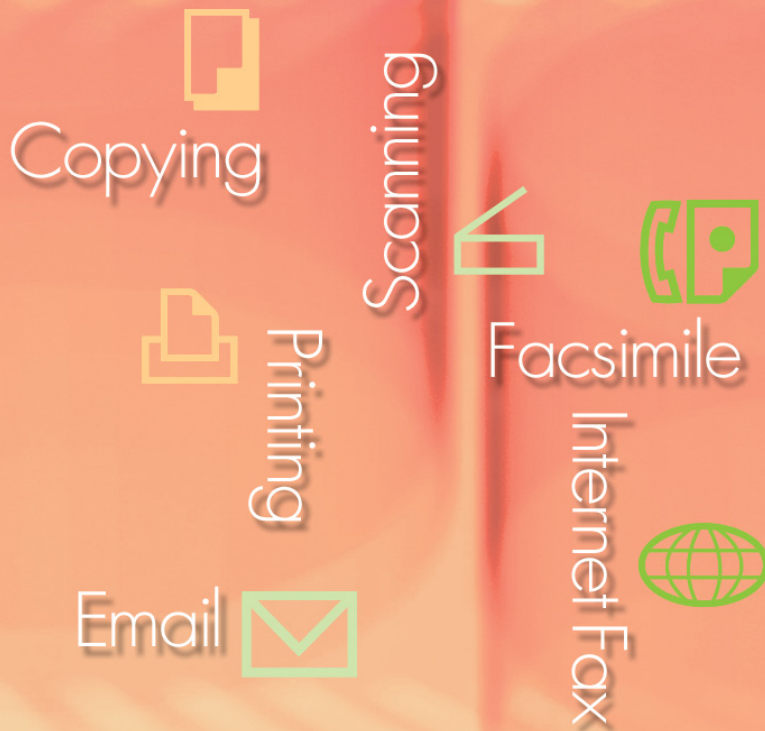


## Operating Instructions Software (Communications Utility) For Digital Imaging Systems

---



Before using this software, please carefully read these instructions completely and keep these operating instructions in a safe place for future reference.

The following trademarks and registered trademarks are used throughout this manual:

Microsoft, MS-DOS, Windows, Windows Server, Windows Vista, PowerPoint, Excel and Internet Explorer are either registered trademarks or trademarks of Microsoft Corporation in the United States and/or other countries.

Microsoft product screen shot(s) reprinted with permission from Microsoft Corporation.

i386, i486, Intel, Celeron, Intel Centrino, Pentium and Itanium are trademarks of Intel Corporation and its subsidiaries.

IBM and AT are the trademarks or registered trademarks of International Business Machines Corporation in the U.S. and other countries.

The USB-IF Logos are trademarks of Universal Serial Bus Implementers Forum, Inc.

Mac, Mac OS, Macintosh, True Type and Apple are trademarks of Apple Inc., registered in the U.S. and other countries.

Novell, NetWare, IntranetWare, NDS are registered trademarks of Novell, Inc. in the USA and other countries.

PEERLESSPage™ is a trademark of the PEERLESS Systems Corporation; and, PEERLESSPrint® and Memory Reduction Technology® are registered trademarks PEERLESS Systems Corporation; and, COPYRIGHT © 2005 PEERLESS Systems Corporation.

COPYRIGHT © 2005 Adobe Systems Incorporated. All Rights Reserved; and Adobe® PostScript® 3™.

Universal Font Scaling Technology (UFST) and all typefaces have been licensed from Monotype Imaging Inc.

Monotype® is a registered trademark of Monotype Imaging Inc. registered in the U.S. Patent and Trademark Office and may be registered in other jurisdictions.

ColorSet™ is a registered trademark of Monotype Imaging Inc. registered in the U.S. Patent and Trademark Office and may be registered in other jurisdictions. ColorSet™ Profile Tool Kit, Profile Studio and Profile Optimizer are trademarks of Monotype Imaging Inc. and may be registered in certain jurisdictions.

COPYRIGHT © 2007 Monotype Imaging Inc. All Rights Reserved.

PCL is a trademark of Hewlett-Packard Company.

Adobe, Acrobat, Adobe Type Manager, PostScript, PostScript 3 and Reader are either registered trademarks or trademarks of Adobe Systems Incorporated in the United States and/or other countries.

Application software for this device contains a number of programs licensed under the terms of the GNU Lesser General Public License and other open software. For more details and applicable license thereof, please refer to the Read Me file for the software.

All other product/brand names, trademarks or registered trademarks identified herein are the property of their respective owners.

In these Operating Instructions, some ™ and ® marks are omitted from the main text.

© Panasonic Communications Co., Ltd. 2005-2008

Unauthorized copying and distribution is a violation of law.

Panasonic accepts no liability for any effects resulting from the use of this software or manual.

Published in Japan.

The contents of these Operating Instructions are subject to change without notice.

## Table of Contents

---

<b>General Description .....</b>	<b>4</b>
<b>System Requirements .....</b>	<b>6</b>
<b>Scanner Settings .....</b>	<b>8</b>
■ Scanner Reception Notification .....	8
■ Scanner Configuration.....	9
■ Panasonic Communications Utility .....	12

---

**NOTE**

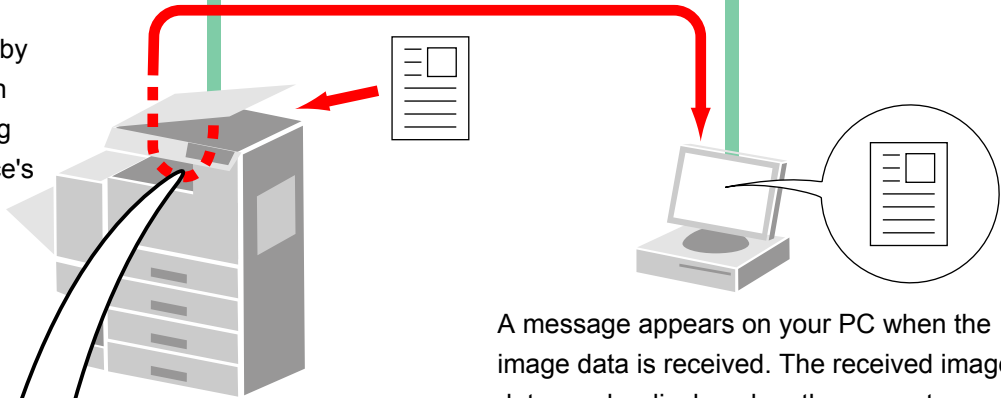
*Model availability depends on the destination country.*

# General Description

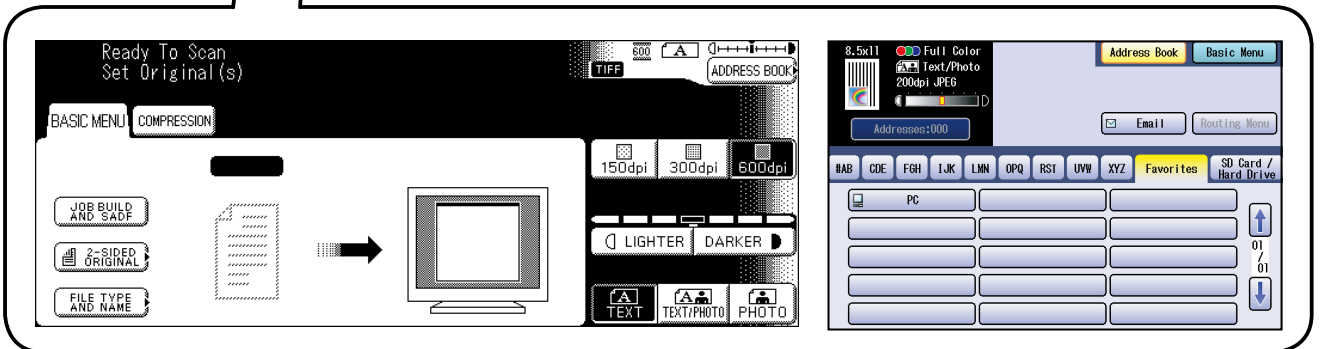
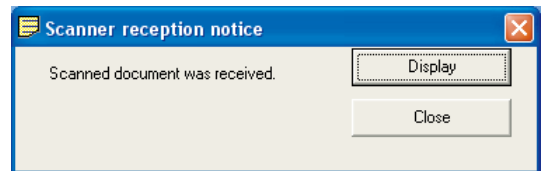
The Communications Utility software uses devices connected to the network to scan documents, and receives the scanned image data on a computer.

The scanned image data is automatically sent to a specified computer.

Scanning is performed by placing the document in the scanner and starting the scan from the device's control panel.



A message appears on your PC when the image data is received. The received image data can be displayed on the computer screen.



The Panasonic Document Management System includes the Panasonic Communications Utility for setting up the scanner, PC-Fax, and other functions on Panasonic models.

To enable the Network Scanning feature and/or Panafax Desktop, the Panasonic Communications Utility must be activated on your PC in advance.

The Panasonic Communications Utility is permanently displayed in the Windows Taskbar. The following settings are available from the menu opened by right-clicking on the icon.

- Setup the "Reception Notification" display method for a scanner, PC-Fax, or other device.
- Open the Scanner Configuration dialog box.
- Start the Panafax Desktop application.
- Open the Fax Receive Log Window.

# System Requirements

- Personal Computer : IBM® PC/AT® and compatibles (CPU Intel® Pentium® 4 1.6 GHz or greater is recommended)
- Operating System : Microsoft® Windows® 2000 operating system (Service Pack 4 or later)\*<sup>1</sup>, Microsoft® Windows® XP operating system (Service Pack 2 or later)\*<sup>2</sup>, Microsoft® Windows Server® 2003 operating system (Service Pack 1 or later)\*<sup>3</sup>, Microsoft® Windows Vista® operating system\*<sup>4</sup>, Microsoft® Windows Server® 2008 operating system\*<sup>5</sup>.

\*The following Operating System is not supported :

Microsoft® Windows Server® 2003 Enterprise Edition for Itanium®-based systems,  
Microsoft® Windows Server® 2008 Enterprise Edition for Itanium®-based systems.

- Application Software: Microsoft® Internet Explorer® 6.0 Service Pack 1 or later,  
Microsoft® .NET Framework Version 2.0,  
.NET Framework Version 2.0 Language Pack .
- System Memory : Recommended Memory for each OS:
  - Microsoft® Windows® 2000 operating system : 256 MB or more
  - Microsoft® Windows® XP operating system : 512 MB or more
  - Microsoft® Windows Server® 2003 operating system
  - Microsoft® Windows Vista® operating system : 1 GB or more
  - Microsoft® Windows Server® 2008 operating system
- Free Disk Space : 300 MB or more (For installation and work space, not including storage space)
- CD-ROM Drive : Used for installing the software and utilities from the CD-ROM
- Interface : 10Base-T/100Base-TX/1000Base-T Ethernet Port, USB Port, Parallel Port  
(The interface that can be used is different depending on the model)

\*1 Microsoft® Windows® 2000 operating system (hereafter Windows 2000)

\*2 Microsoft® Windows® XP operating system (hereafter Windows XP)

\*3 Microsoft® Windows Server® 2003 operating system (hereafter Windows Server 2003)

\*4 Microsoft® Windows Vista® operating system (hereafter Windows Vista)

\*5 Microsoft® Windows Server® 2008 operating system (hereafter Windows Server 2008)

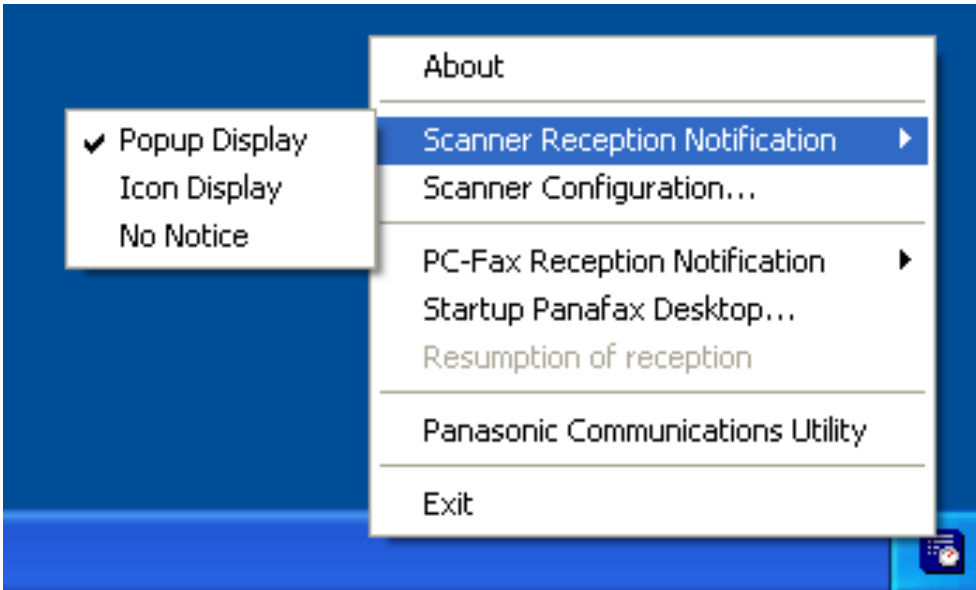
# Memo

# Scanner Reception Notification

To activate the **Panasonic Communications Utility**, select **Panasonic** → **Panasonic Document Management System** → **Communications Utility** in the **All Programs (Programs for Windows 2000)** folder of the **Start** menu.

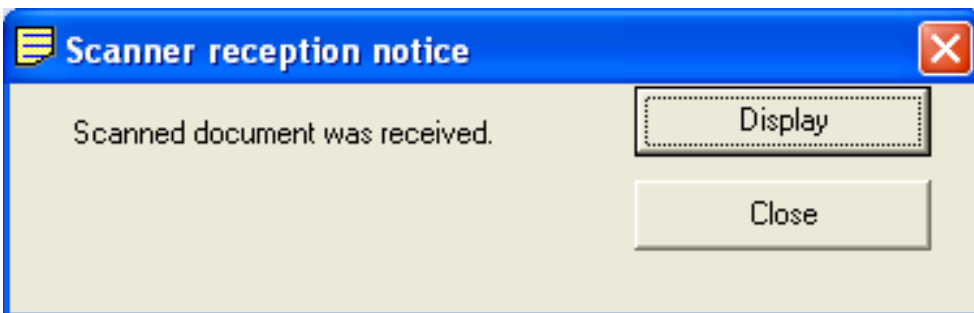
## • Scanner Reception Notification

Right-click the **Panasonic Communications Utility** icon, select the **Scanner Reception Notification**, and then select either **Popup Display**, or **Icon Display**.




### <Popup Display>

Displays the following screen on the desktop and the **Panasonic Communications Utility** icon in the taskbar changes appearance when the scanned image is received.



### <Icon Display>

When the scanned image is received, the  icon is displayed on the desktop and the **Panasonic Communications Utility** icon changes appearance, as shown below.



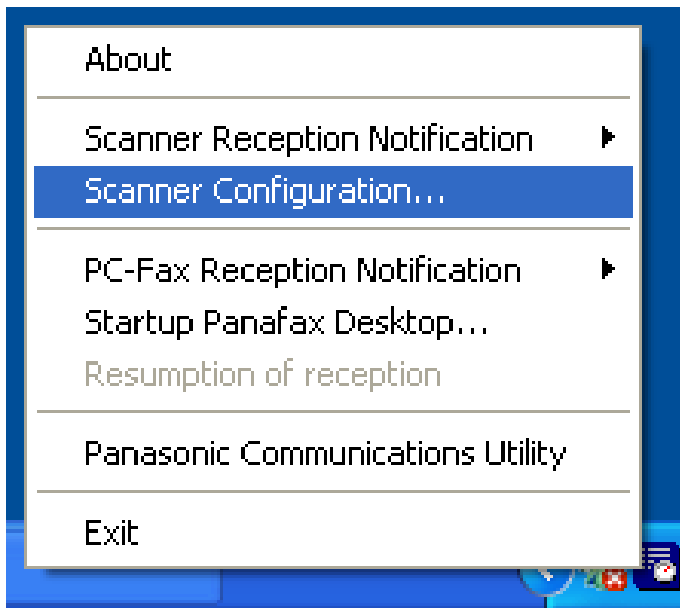
### <No Notice>

No notification message is displayed on your PC even when the scanned image is received.



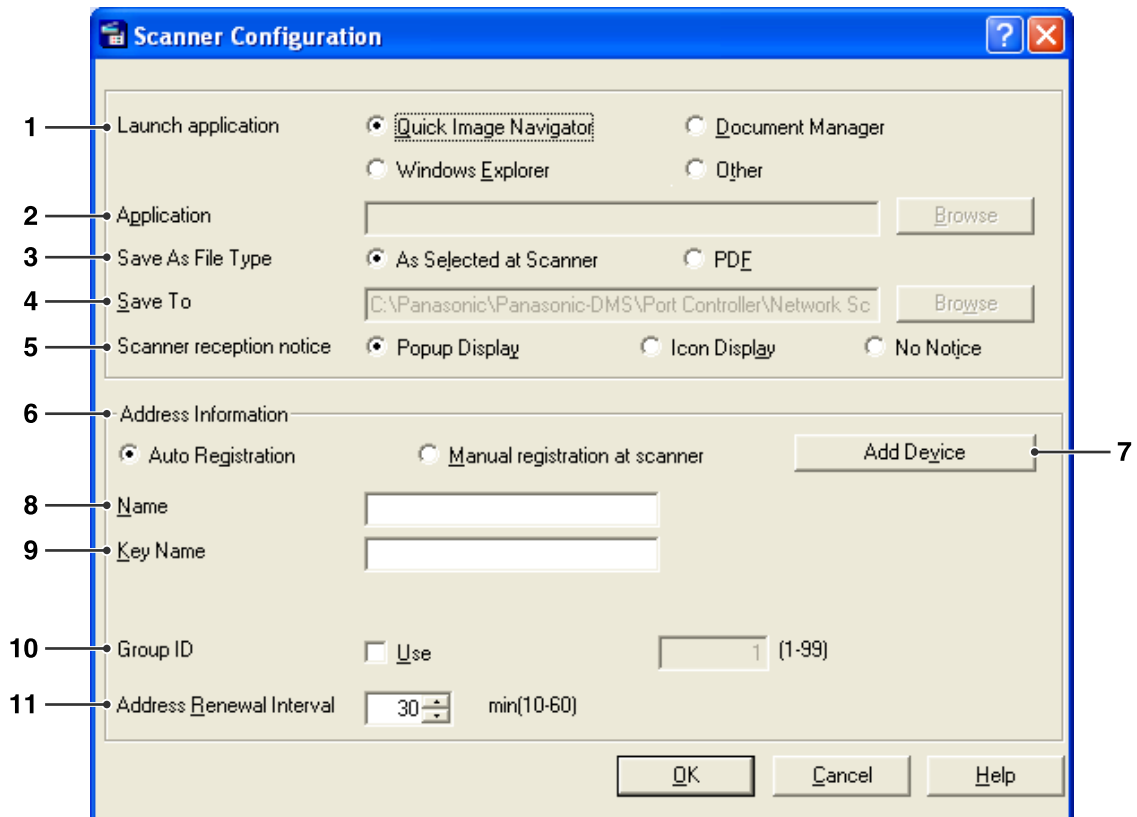
## Scanner Configuration

Right-click on **Panasonic Communications Utility** icon, and select **Scanner Configuration...**



*Continued on the next page...*

The Scanner Configuration Window appears as shown below.



**1. Launch application**

Select the application that will receive the scanner's data (Quick Image Navigator, Document Manager, Windows Explorer, or Other application).

**2. Application**

Select the application program path for opening the scanned image.

**3. Save As File Type**

Select the file format type to save the scanned image.

**4. Save to**

Select the path to save the scanned image.

**5. Scanner reception notice**

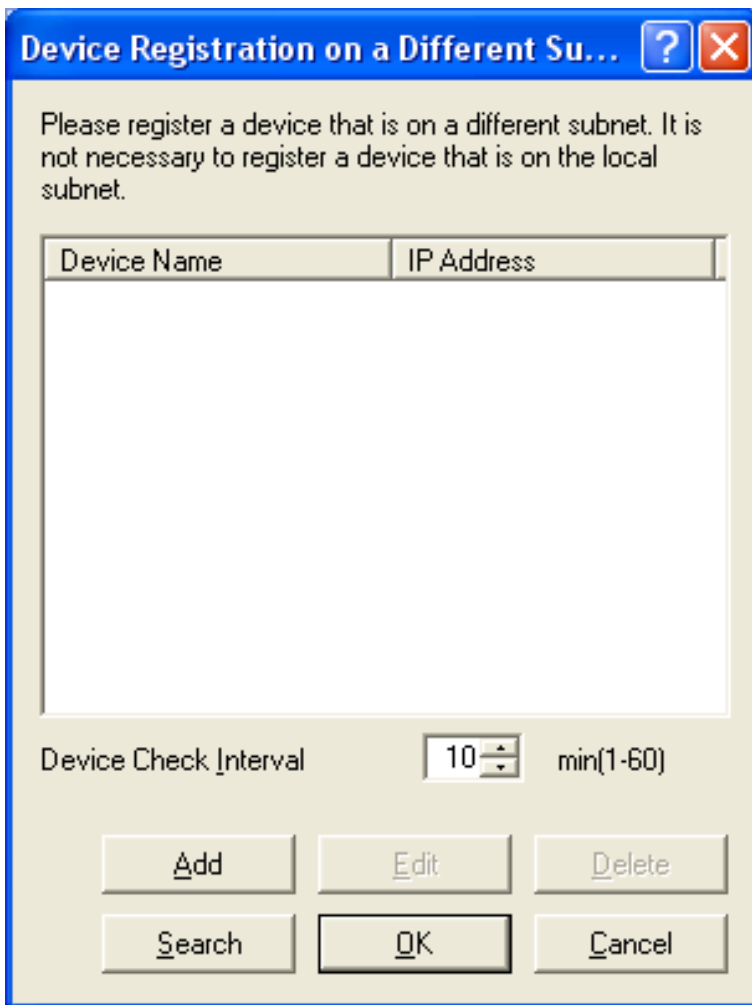
Select the viewing mode for the scanner reception notice.

**6. Address Information**

Select one of the following:

<b>Auto Registration</b>	Your PC's Address Information will be automatically registered into the Address Book of the device(s).
<b>Manual registration at scanner</b>	Manually register your PC's Address Information into the Address Book of the device.

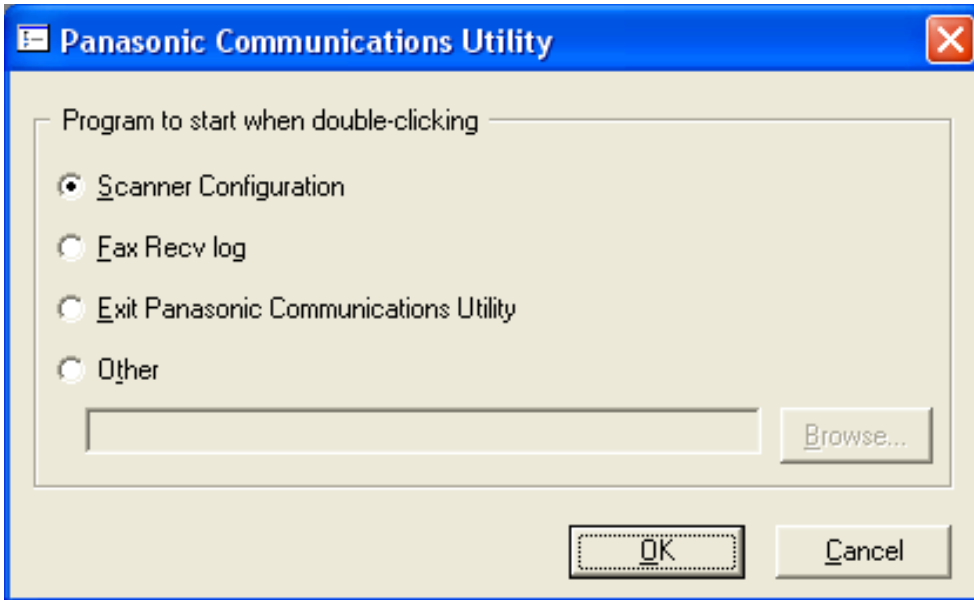
7. **Add Device** button  
Click **Add** and enter the IP addresses of the devices.



8. **Name**  
Specifies your PC Name to be registered to the scanner address book of the device(s). (Up to 15 characters)
9. **Key Name**  
Specifies the Key Name to be registered to the scanner address book of the device(s). (Up to 15 characters)
10. **Group ID**  
Specifies the Group ID to register your PC's Address Information to the device(s) on your network.  
The Group ID will be compared with the **General Settings** on the device(s) when connecting to your PC.  
When a match is found, the address information will be registered to the device(s).
11. **Address Renewal Interval**  
Set the time interval for updating the address information to the device(s).

# Panasonic Communications Utility

Right-click on **Panasonic Communications Utility** icon, and select **Panasonic Communications Utility**. The Panasonic Communications Utility Window appears as shown below.



Set to start when double-clicking the Panasonic Communications Utility Icon.

<b>Scanner Configuration</b>	Open the Scanner Configuration Window.
<b>Fax Recv log (When the Panafax Desktop is installed)</b>	Open the Fax Receive Log Window.
<b>Exit Panasonic Communications Utility</b>	The Panasonic Communications Utility is terminated.
<b>Other</b>	Click the <input type="button" value="Browse"/> button to set the application program.

# Memo

**USA Only**

## **WARRANTY**

PANASONIC COMMUNICATIONS COMPANY OF NORTH AMERICA MAKES NO WARRANTIES, GUARANTEES OR REPRESENTATIONS, EXPRESSED OR IMPLIED, TO THE CUSTOMER WITH RESPECT TO THIS PANASONIC MACHINE, INCLUDING BUT NOT LIMITED TO, ANY IMPLIED WARRANTY OF MERCHANTABILITY OR FITNESS FOR A PARTICULAR PURPOSE.

PANASONIC COMMUNICATIONS COMPANY OF NORTH AMERICA ASSUMES NO RISK AND SHALL NOT BE SUBJECT TO LIABILITY FOR ANY DAMAGE, INCLUDING, BUT NOT LIMITED TO DIRECT, INDIRECT, SPECIAL, INCIDENTAL OR CONSEQUENTIAL DAMAGES OR LOSS OF PROFITS SUSTAINED BY THE CUSTOMER IN CONNECTION WITH THE USE OR APPLICATION OF THIS PANASONIC MACHINE. SEE YOUR DEALER FOR DETAILS OF DEALER'S WARRANTY.

For Service, Call: \_\_\_\_\_

Panasonic Communications Company of North America,  
Unit of Panasonic Corporation of North America  
One Panasonic Way  
Secaucus, New Jersey 07094  
<http://panasonic.co.jp/pcc/en/>

Panasonic Canada Inc.  
5770 Ambler Drive  
Mississauga, Ontario L4W 2T3  
<http://www.panasonic.ca>

For Customer Support (Except for  
USA and Canada Users):  
Panasonic Communications Co., Ltd.  
Fukuoka, Japan  
<http://panasonic.net>

I0305-14128 (05)  
PJQMC0396UA  
December 2008  
Published in Japan