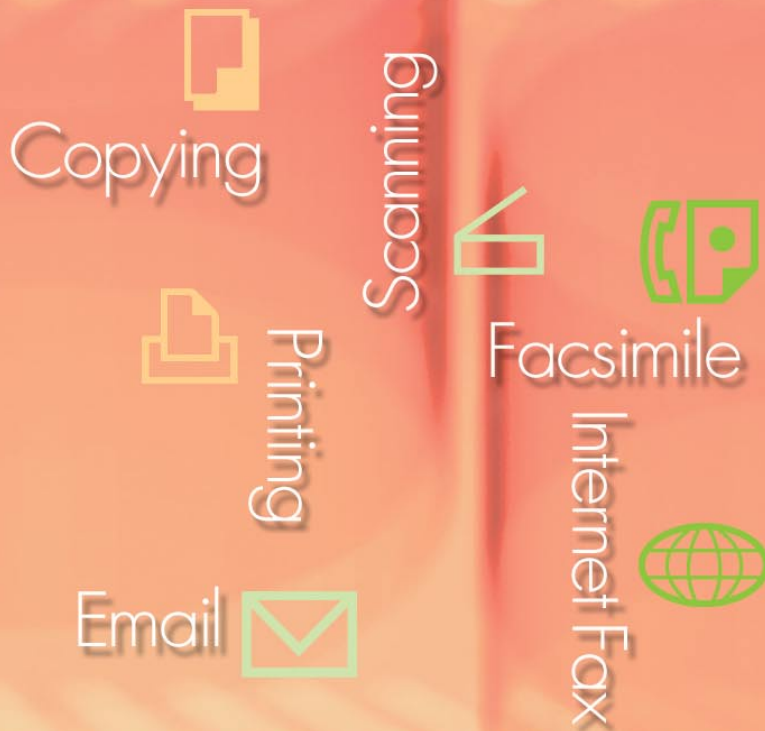


Panasonic®

Operating Instructions (For PostScript3 Printer Driver) Software

Model No. **DP-C262/C322**



WORKIO™

Before using this software, please read these instructions completely and keep these operating instructions for future reference.

English

General
Description

Configuring
the Printer Driver Settings

Print Operation

Specifications

Troubleshooting

Appendix

The following trademarks and registered trademarks are used throughout this manual:

Microsoft, MS-DOS, Windows, Windows NT and Windows Server are either registered trademarks or trademarks of Microsoft Corporation in the USA and other countries. i386, i486, Celeron, Intel Centrino and Pentium are trademarks of Intel Corporation. The USB-IF Logos are trademarks of Universal Serial Bus Implementers Forum, Inc. TrueType is a registered trademark of Apple Computer, Inc. Novell, NetWare, IntranetWare, NDS are registered trademarks of Novell, Inc. in the USA and other countries.

PEERLESSPage™ is a trademark of the PEERLESS Systems Corporation; and, PEERLESSPrint and Memory Reduction Technology® are registered trademarks PEERLESS Systems Corporation; and, COPYRIGHT © 2005 PEERLESS Systems Corporation. COPYRIGHT © 2005 Adobe Systems Incorporated. All Rights Reserved; and Adobe® PostScript® 3™

Universal Font Scaling Technology (UFST) and all typefaces have been licensed from Agfa Monotype.

Agfa® and the Agfa rhombus are registered trademarks of Agfa-Gevaert N.V. registered in the U.S. Patent and Trademark Office and may be registered in other jurisdictions. Monotype® is a registered trademark of AMT registered in the U.S. Patent and Trademark Office and may be registered in other jurisdictions.

ColorTune® is a registered trademark of Agfa-Gevaert N.V. registered in the U.S. Patent and Trademark Office and may be registered in other jurisdictions. Profile Tool Kit™, Profile Studio™ and Profile Optimizer™ are trademarks of AMT and may be registered in certain jurisdictions. PCL is a trademark of Hewlett-Packard Company.

Adobe, Acrobat, Adobe Reader, Adobe Type Manager, PostScript, PostScript 3 and Reader are either registered trademarks or trademarks of Adobe Systems Incorporated in the United States and/or other countries.

All other product/brand names, trademarks or registered trademarks identified herein are the property of their respective owners.

© 2005 Panasonic Communications Co., Ltd. All Rights Reserved.
Unauthorized copying and distribution is a violation of law.
Published in Japan.

The contents of these Operating Instructions are subject to change without notice.

Memo

Table of Contents

General Description	6
Configuring the Printer Driver Settings (for Windows 98/Me)	8
■ Opening the Printer Properties Dialog Box	8
■ Paper Tab.....	10
■ Graphics Tab.....	12
■ Device Options Tab.....	14
Configuring the Printer Driver Settings (for Windows NT 4.0/2000/XP/Windows Server 2003) ...	16
■ Opening the Printing Preferences Dialog Box.....	16
■ Advanced Settings	18
■ Device Settings	21
Configuring the Printer Driver Settings (for Macintosh OS 8.6/9.x).....	22
■ Opening the Print Dialog Box.....	22
■ Output Menu.....	24
■ Quality Menu	26
■ Printer Specific Options Menu.....	28
Configuring the Printer Driver Settings (for Macintosh OS X)	30
■ Opening the Print Dialog Box.....	30
■ Output Menu (in Printer Features Menu).....	32
■ Quality_1 Menu (in Printer Features Menu)	34
■ Quality_2 Menu (in Printer Features Menu)	36
■ Miscellaneous Menu (in Printer Features Menu).....	37
Print Operation(for PC).....	39
■ Printing from Windows Applications	39
■ Printing from Macintosh Applications	40
■ Using the Job Status Utility (Windows only).....	42
Print Operation(for Printer)	47
■ Mailbox Printing.....	47
■ Job Control (Output Queue).....	52
Specifications	54

Troubleshooting 55

- Printing Operation Failure 55
- Documents Not Printing Correctly 56
- Error Messages Displayed on the Computer 57
- Error Messages Displayed on Your Machine 58

Appendix 60

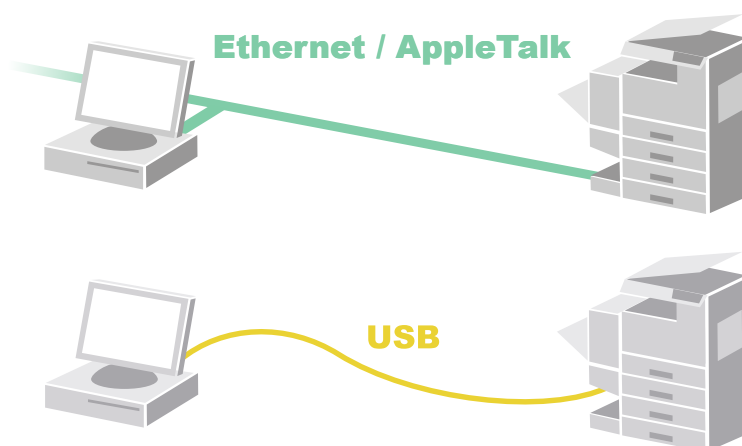
- Printing Area..... 60

General Description

The PostScript (PS) Printer Driver is required to send Adobe® PostScript® 3™ print data from a PC to your machine.

The properties window of the PS Printer Driver can be used to specify print settings, such as the print orientation and page size. The PS Printer Driver also provides a range of easy-to-use layout functions that allow you to setup printing to suit your requirements.

- The PS Printer Driver is the base software required to send print data to your machine as a network printer or local printer.



- Network Printer Port adds a new port to your Windows PC in accordance with the type of network (LPR, IPP, or Raw mode) that you are using. Once you have installed the Network Printer Port on your Windows PC, setting up your network printer is easy.

**NOTE**

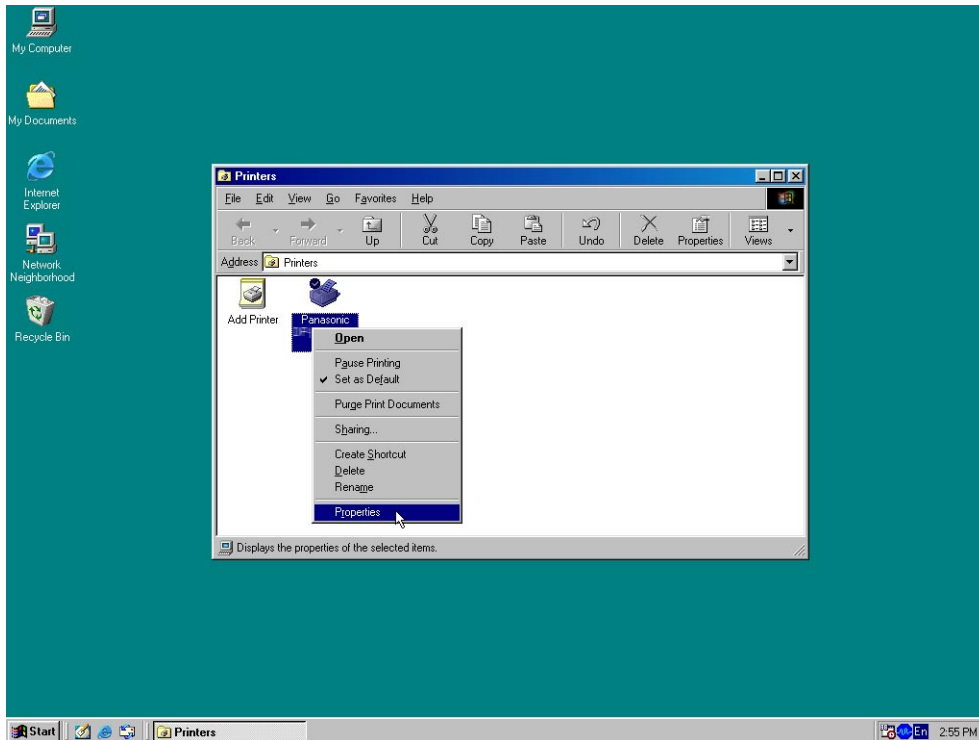
The DP-C262/C322 supports both the Printer Control Language (PCL), and PostScript (PS) printing. The PCL Printer Driver is required if using as a PCL printer.

Memo

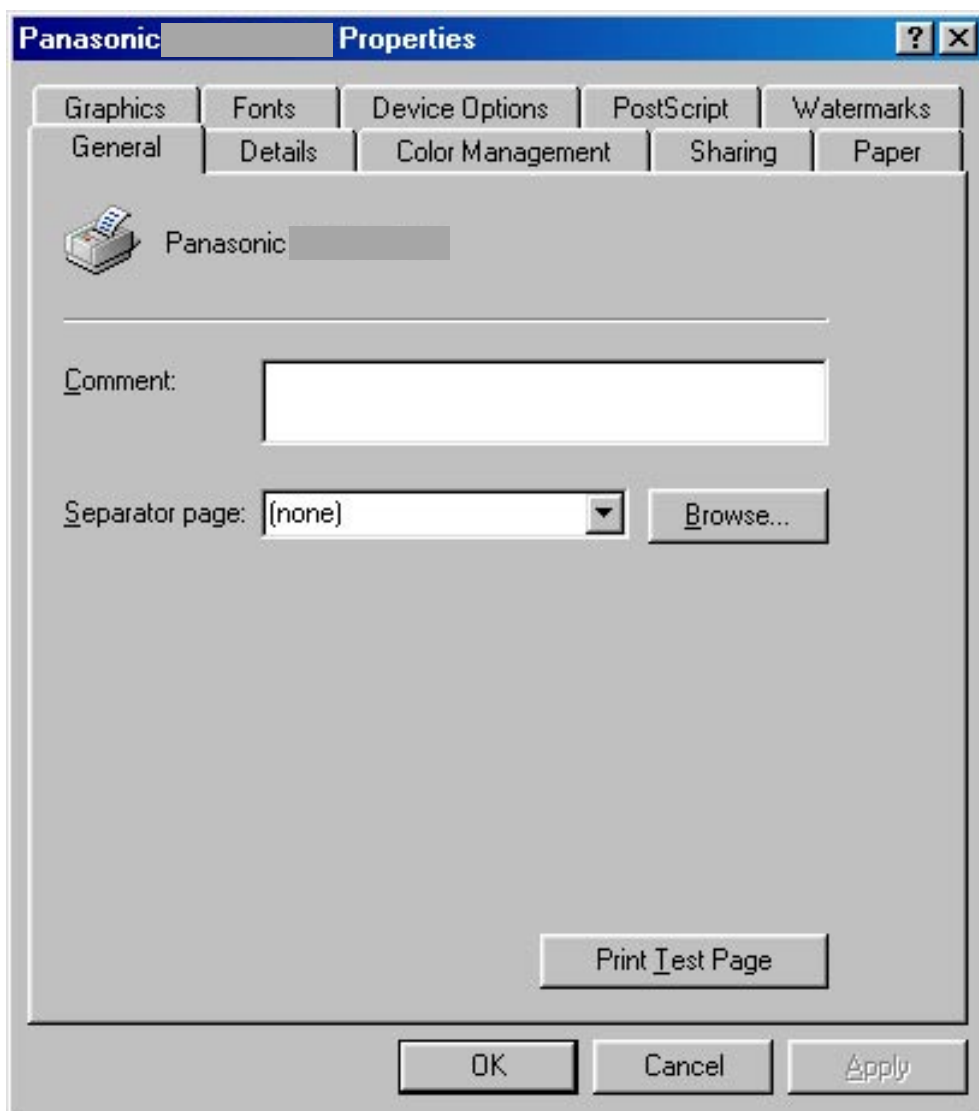
Opening the Printer Properties Dialog Box

To change the printer settings, open the dialog box for the printer properties by performing the following steps.

- 1 Click the **Start** button, select **Settings**, and then click **Printers**.
- 2 Right-click on the printer icon in the **Printers** folder, and then select **Properties** in the pop-up menu.



The following printer properties dialog box appears. Click the desired tab(s) and configure the properties as necessary.




General / Details / Color Management / Sharing / Fonts / PostScript / Watermarks Tab:

These tabs are Windows specific settings. Refer to Windows manuals, Windows pop-up help topics, and/or Online Support.

Note:

To open Windows pop-up help topics:

- Click the  icon at top right corner of the printer properties dialog box. The "?" mark will appear on your mouse cursor. Then click on unfamiliar object in the dialog box, the topic opens in a pop-up window. When you finish reading the information in the pop-up window, you can close it by clicking anywhere in the window.

Paper / Graphics / Device Options Tab:

These tabs are **Panasonic Printing System** associated settings. For additional details, refer to the page(s) relevant to the subject you are interested in.

Paper Tab : see page 10

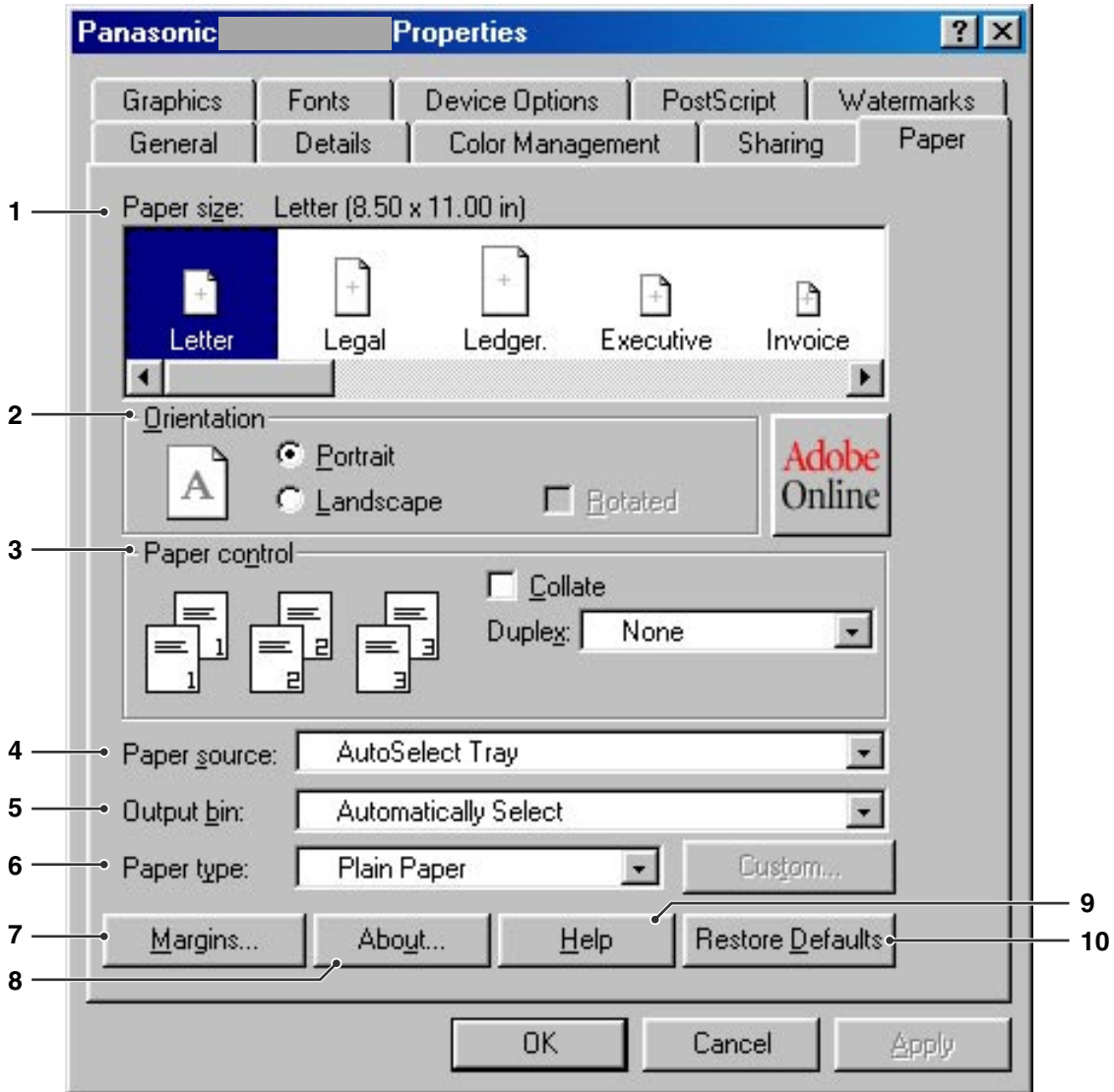
Graphics Tab : see page 12

Device Options Tab : see page 14

Paper Tab

Paper tab is used for configuring output paper settings.

Configuring the Printer Driver Settings
(for Windows 98/Me)



1. Paper size

Specifies the form-to-tray assignment. Once you have assigned a form to a specific tray, the printer will always use that tray to print the defined paper size (form).

2. Orientation

Specifies the direction of the image to be printed (Portrait/Landscape).

3. Paper control

Controls printer outputs and groups pages. Select **Collate** if you wish each set of multiple copies collated when you print them. Otherwise, each page is printed in individual groups. The **Duplex** menu specifies whether and how the printer should print the document on both sides of the paper.

4. **Paper source**

Specify the paper tray you would like to use. If you choose **AutoSelect Tray**, the printer driver will automatically select an appropriate tray according to the **Paper size** selected.

5. **Output bin**

Specifies the output tray.

Automatically Select	Automatically selects one of the following output trays.
Inner Tray	Sends printed jobs to the inner tray.
Outer Tray	Sends printed jobs to the outer tray. (Selection only displays if the printer is equipped with an outer tray)
Finisher	Sends printed jobs to the finisher. (Selection only displays if the printer is equipped with a finisher)

6. **Paper type**

Specifies the type of paper.

Note:

- *Verify that the paper type selection in the control panel matches the media loaded on the trays.
(Ex: Select "**Transparency**" when Transparencies are loaded in the Sheet Bypass)*
- ***Transparency** is only available if the selected **Paper Size** is A4 or **Letter**.*
- ***Envelope** is only available if one of the envelope paper sizes is selected.*
- *If the **Paper Type** is other than **Plain Paper**, **Glossy/Photo Paper** or **Recycled Paper**, then the **Multi-Purpose Tray** is the only selectable in **Paper Source**.*

7. **button**

Displays the **Margins** dialog box. Click this button to view the area of the page that is unavailable for printing.

8. **button**

Displays version and copyright information for this printer driver.

9. **button**

Displays the help window for this printer driver.

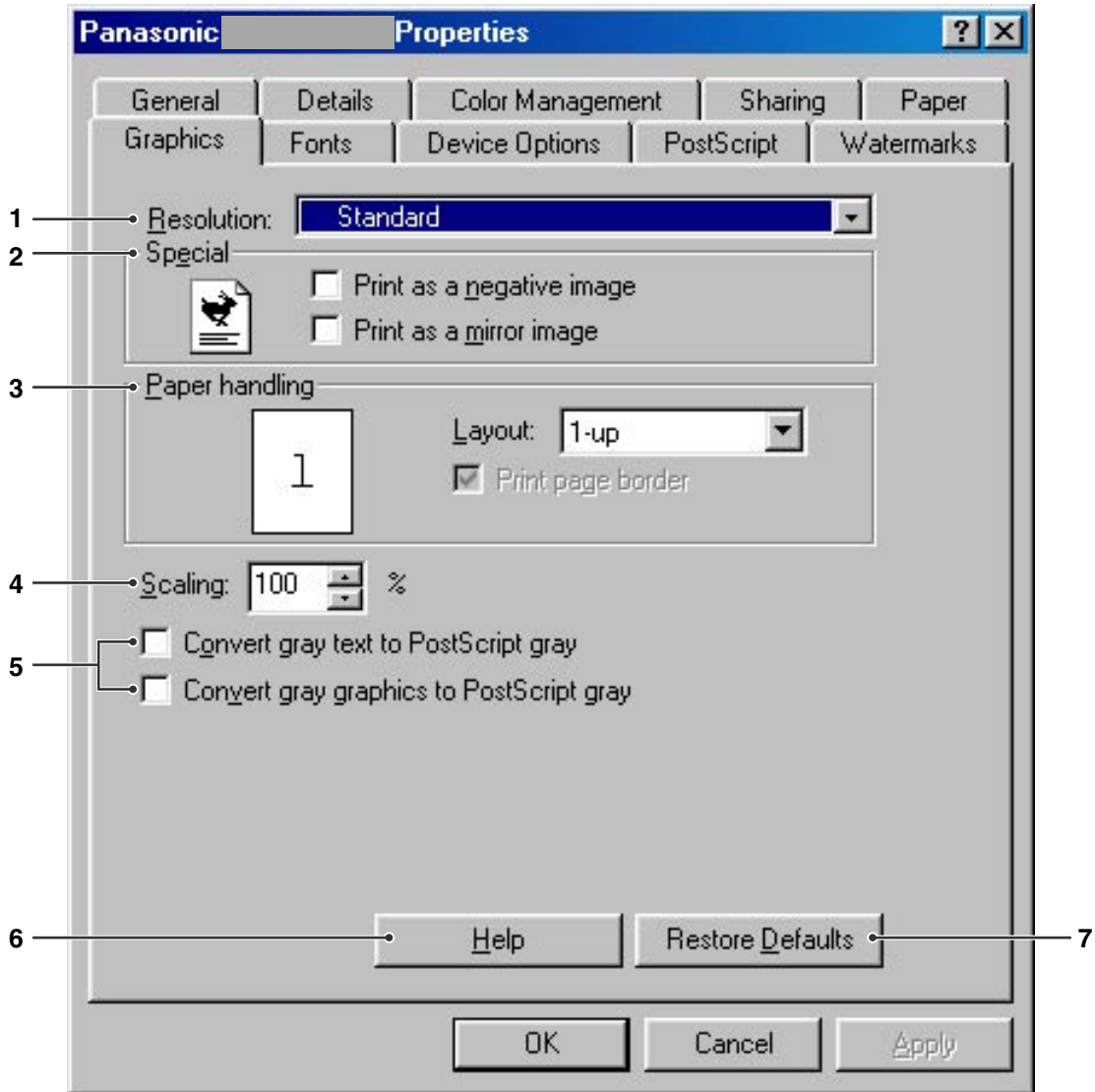
10. **button**

Sets the values of all options in the current dialog box to the default values specified in the PPD file.

Graphics Tab

Graphics tab configures the settings that determine the print quality.

Configuring the Printer Driver Settings
(for Windows 98/Me)



1. Resolution

Specifies the printing resolution. Choosing a higher resolution improves the print quality but slows printing.

Standard	Prints at a print engine resolution of 600×600 dpi.
Enhance	Prints at a print engine resolution of 1200×1200 dpi.

Note:

- Printing takes twice as long when **Enhance** is selected.
- When the **Paper type** is **Transparency**, the quality is automatically set to **Standard**.
- **Enhance** is not available unless the 512MB optional printer memory is installed.

2. **Special**

Prints a negative image and/or mirror image of your document. Click these options to view an example.

3. **Paper handling**

Specify the layout pattern for printing multiple documents on a single sheet of paper and whether page borders are used. Select these options to view an example.

4. **Scaling (25-400%)**

Specify an enlargement or reduction percentage when printing documents. If enlargement/reduction can be set within the application software, indicate 100% here and specify the enlargement/reduction percentage in the Print dialog box of the application software.

5. **Convert gray text / graphics to PostScript gray**

This feature is not available on these machines.

6. **button**

Displays the help window for this printer driver.

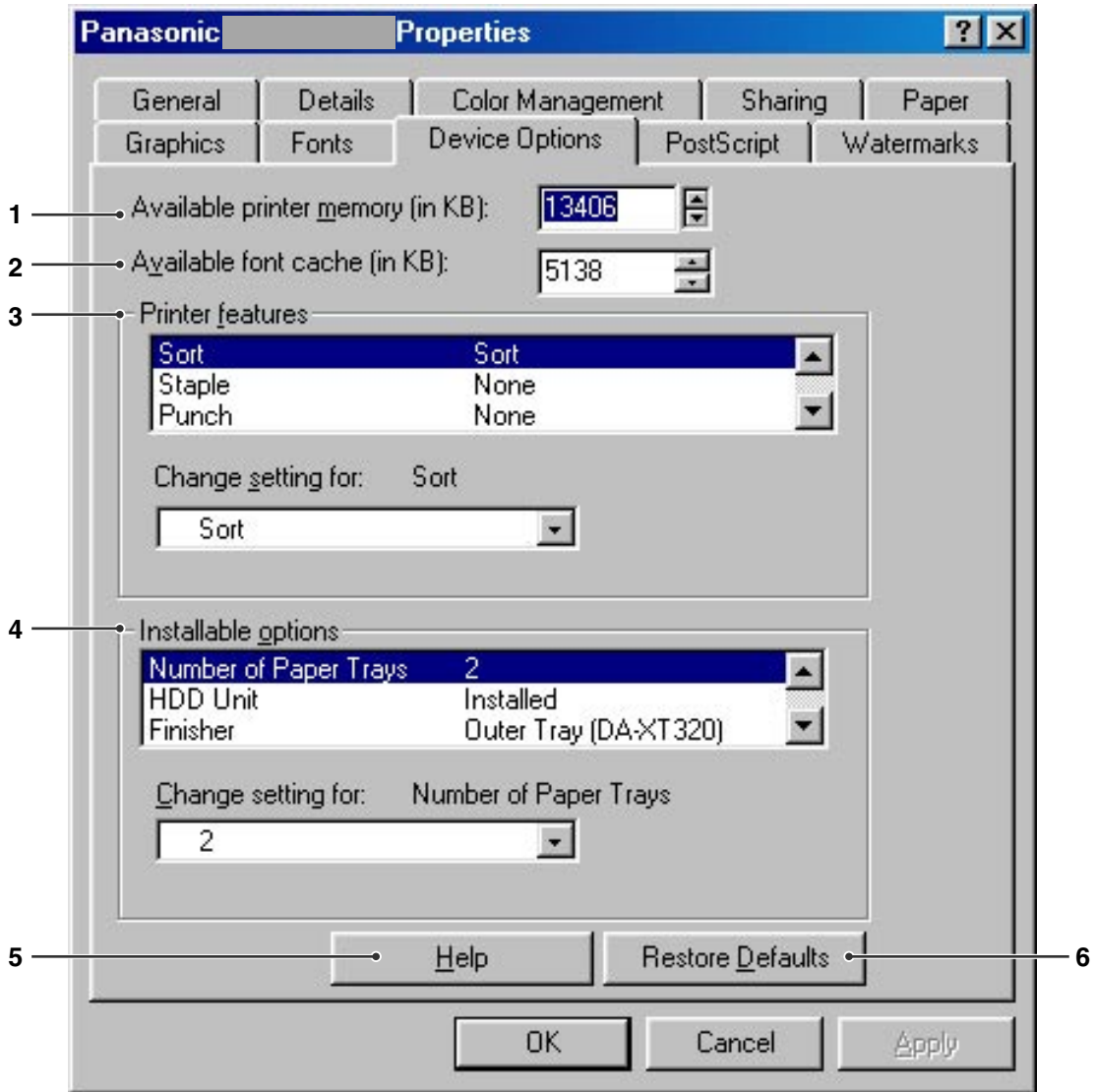
7. **button**

Sets the values of all options in the current dialog box to the default values specified in the PPD file.

Device Options Tab

Device Options tab is used for configuring Panasonic Printing System associated settings.

Configuring the Printer Driver Settings
(for Windows 98/Me)



1. Available printer memory

Specifies the amount of available printer memory. The driver uses this information when performing printing tasks, such as sending fonts from the computer to the printer.

2. Available font cache

Displays the amount of font cache memory now available to Type 32 fonts (bitmap font format). The Driver automatically adjusts the font cache size according to the installed memory option selected in the **Installable options** box.

3. Printer features

Specifies the following printer settings:

Sort

Specifies how pages are sorted when multiple copies are printed.

Non Sort	Print individual pages in the specified quantity. For example, if you print three copies of a five-page document, the printer prints page 1 three times before printing page 2 and so on.
Sort	Copies are stacked in the order they are printed. Multiple copies are printed in separate sets in the specified quantity. For example, if you print three copies of a five-page document, the printer prints pages 1-5 three times.
Rotate Stack	Each set is rotated and stacked uniformly.
Rotate Sort	Each set is rotated and sorted.
Shift Stack	Each set is shifted and stacked uniformly.
Shift Sort	Each set is shifted and sorted.

Note:

- *Shift* is available only if the printer is equipped with a finisher.
- *Rotate* is available only when **Output bin** is set to **Automatically Select** within the *Paper* tab.
- *Rotate* requires paper of the specified size to be loaded in two trays, loaded for landscape and portrait printing.

Staple

Specifies the position of the staple. Choose the position from **Left 1**, **Left 2**, **Right 1**, **Right 2**, **Top 2** or **Saddle Stitch**.

Note:

- Only available if the printer is equipped with an optional finisher.
- Available staple position may be different depending on the finishers.
- The staple capacity differ depending on the types of finisher and the paper size. (i.e. up to 50 sheets, Letter or A4 size, 1-Bin Saddle Stitch Finisher) Refer to Specifications in the Operating Instructions (For Basic Function) provided another booklet.
- When setting the staple position to Saddle Stitch, set paper in Landscape position.

Punch

Specifies the hole punch position.

Note:

- Only available if the printer is equipped with an optional finisher and puncher unit.
- Hole punching can be performed on the following paper sizes.
A3, A4, B4(JIS), B5(JIS), Ledger, Legal, Letter and FLS2

4. Installable options

Specifies the following printer settings:

Number of Paper Trays

Specifies the number of paper trays installed on the device.

HDD Unit

Select Installed if a hard disk drive is installed.

Finisher

If the printer is equipped with a Finisher, select it from the list.

Punch Unit

Select Installed if a Punch Unit is installed.

5. **button**

Displays the help window for this printer driver.

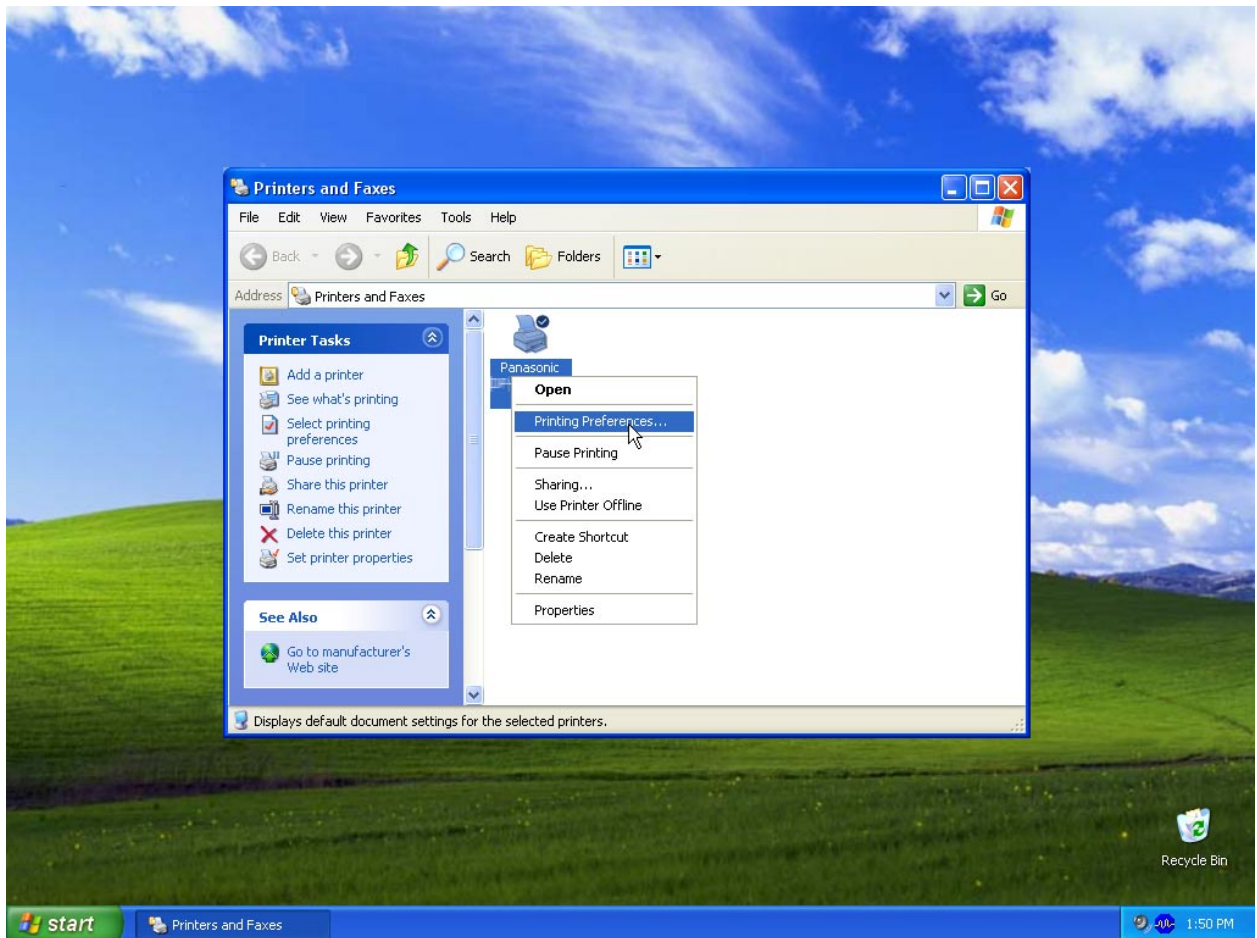
6. **button**

Sets the values of all options in the current dialog box to the default values specified in the PPD file.

Opening the Printing Preferences Dialog Box

To change the printer settings, open the dialog box for the printer properties by performing the following steps.

- 1 Click the **Start** button, select **Printers and Faxes** icon. (for Windows NT 4.0 / 2000: Click the **Start** button, select **Settings**, and then click the **Printers** icon)
- 2 Right-click on the desired printer icon in the **Printer and Faxes** folder, and then select **Printing Preferences...** in the pop-up menu.

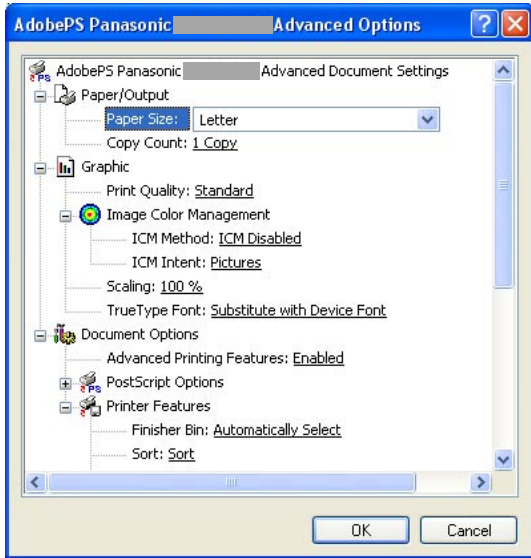


3 The **Printing Preferences** (For Windows NT: Default Properties dialog box) dialog box appears.

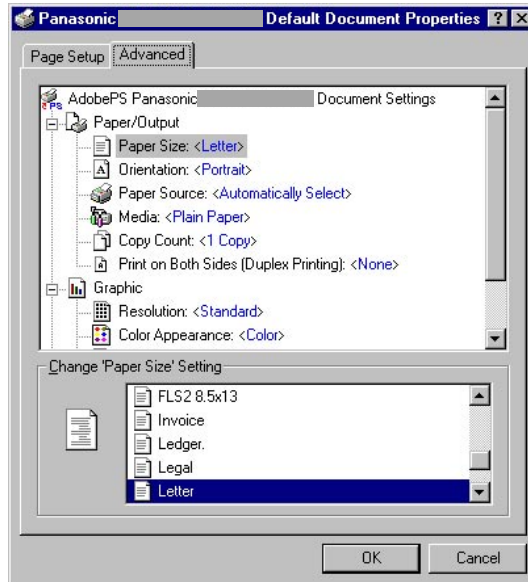
For Windows XP / 2000 : Click the **Advanced...** button.

For Windows NT : Select the **Advanced** tab.

The following Advanced Settings dialog box appears. Click the desired item(s) and configure the properties as necessary.



Windows XP / 2000



Windows NT 4.0

Advanced Settings

In the **Advanced Settings** dialog box, following items are Panasonic Printing System associated settings.

Graphic - Print Quality

Specifies the printing resolution. Choosing a higher resolution improves the print quality but slows printing.

Standard	Prints at a print engine resolution of 600×600 dpi.
Enhance	Prints at a print engine resolution of 1200×1200 dpi.

Note:

- *Printing takes twice as long when **Enhance** is selected.*
- *When the **Media type** is **Transparency**, the quality is automatically set to **Standard**.*
- ***Enhance** is not available unless the 512MB optional printer memory is installed.*

Printer Features - Finisher Bin

Specifies the output tray.

Automatically Select	Automatically selects one of the following output trays.
Inner Tray	Sends printed jobs to the inner tray.
Outer Tray	Sends printed jobs to the outer tray. (Selection only displays if the printer is equipped with an outer tray)
Finisher	Sends printed jobs to the finisher. (Selection only displays if the printer is equipped with a finisher)

Printer Features - Sort

Specifies how pages are sorted when multiple copies are printed.

Non Sort	Print individual pages in the specified quantity. For example, if you print three copies of a five-page document, the printer prints page 1 three times before printing page 2 and so on.
Sort	Copies are stacked in the order they are printed. Multiple copies are printed in separate sets in the specified quantity. For example, if you print three copies of a five-page document, the printer prints pages 1-5 three times.
Rotate Stack	Each set is rotated and stacked uniformly.
Rotate Sort	Each set is rotated and sorted.
Shift Stack	Each set is shifted and stacked uniformly.
Shift Sort	Each set is shifted and sorted.

Note:

- ***Shift** is available only if the printer is equipped with a finisher.*
- ***Rotate** is available only when **Paper Source** is set to **Automatically Select**.*
- ***Rotate** requires paper of the specified size to be loaded in two trays, loaded for landscape and portrait printing.*

Printer Features - Staple

Specifies the position of the staple. Choose the position from **Left 1, Left 2, Right 1, Right 2, Top 2** or **Saddle Stitch**.

Note:

- Only available if the printer is equipped with an optional finisher.
- Available staple position may be different depending on the finishers.
- The staple capacity differ depending on the types of finisher and the paper size. (i.e. up to 50 sheets, Letter or A4 size, 1-Bin Saddle Stitch Finisher) Refer to Specifications in the Operating Instructions (For Basic Function) provided another booklet.
- When setting the staple position to Saddle Stitch, set paper in Landscape position.

Printer Features - Punch

Specifies the hole punch position.

Note:

- Only available if the printer is equipped with an optional finisher and puncher unit.
- Hole punching can be performed on the following paper sizes.
A3, A4, B4(JIS), B5(JIS), Ledger, Legal, Letter and FLS2

Printer Features - Color Mode

Specifies whether to print in color or grayscale.

Color	Prints documents in color.
Photo Color	Prints photos with the optimal settings.
Grayscale	Prints documents in monochrome.

Note:

Photo Color mode takes more time to print a file.

Printer Features - Color Management

Specifies color settings to fine-tune color reproduction.

Device Color	Choose this option to adjust the original color settings.
None	Select None when using ICM or application's color management.
SWOP	Simulates printing to a standard American offset press.
Euroscale	Simulates printing to an European offset press.

Printer Features - Device Color Space for Text / Graphics / Image

Specifies color reproduction and black output for text, graphics and images.

Standard Profile with Black Gray	Print with color reproduction close to standard color monitors. Use only black to reproduce intermediate shades of gray.
Vivid Profile with Black Gray	Print with more vivid color reproduction. A good choice for line art and graphics. Use only black to reproduce intermediate shades of gray.
Standard Profile with CMYK Gray	Print with color reproduction close to standard color monitors. Use the four colors of CMYK to reproduce intermediate shades of gray.
Vivid Profile with CMYK Gray	Print with more vivid color reproduction. A good choice for line art and graphics. Use the four colors of CMYK to reproduce intermediate shades of gray.

Printer Features - Toner Save

Choose **On** to conserve toner. The overall effect is lighter, so this feature is recommended for test printing or producing documents for which appearance is not critical.

Printer Features - Brightness

Color brightness is adjustable. 100% is normal brightness. Brightness darkens as the numerical value grows.

Printer Features - Secure

Printed documents can be saved on the printer's optional hard disk drive (HDD) if the printer is equipped with one. Saved documents can be printed from the printer's control panel. See "Mailbox Printing" on page 47. Three types of mailbox printing is available.

None	Mailbox printing is not applied.
Check Then Print	Allows you to print one proof set, before proceeding to print a large multi-set with various settings. The documents data will be deleted from the printer after printing.
Mailbox	Saves print data in the printer, in the mailbox specified by the User ID . The User ID must be entered to print documents saved in Mailbox. The document data will remain in the printer until it is deleted.
Secure Mailbox	Saves print data in the printer, in the mailbox specified by the User ID. The User ID and Password must be entered to print confidential documents saved in Secure Mailbox. The document data will remain in the printer until it is deleted.

Note:

*Using mailbox printing requires that the optional **Hard Disk Drive Unit** is installed in the printer.*

Printer Features - Print Blank Pages

Selecting this option will enable printing blank pages.

Note:

*The **Print Blank Pages** is not selectable if the **Print on Both Sides** is set to be enabled on the **Layout** menu.*

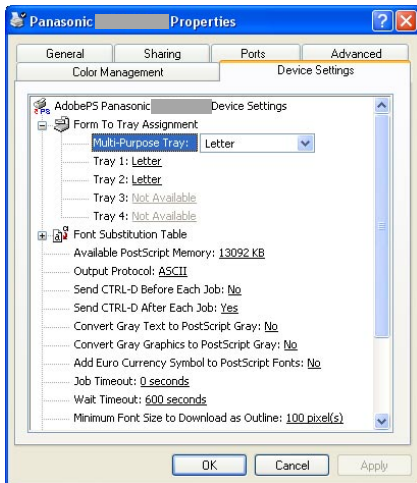
Printer Features - Front/Back Cover

You can configure the settings for cover pages. To use a cover page, select **Front Cover** or **Back Cover**, specifies the paper source used for pages for the Front and Back covers.

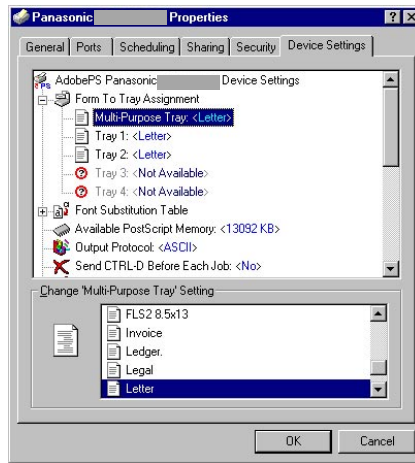
Device Settings

The **Device Settings** dialog box includes the options settings of the Panasonic printer. To change the Device Settings, open the dialog box for the printer properties by performing the following steps.

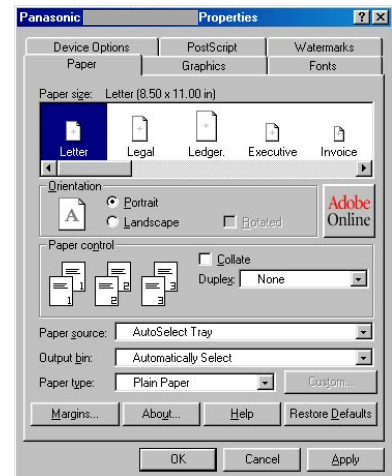
- 1 Logon to the computer/network using an account with administrator rights.
- 2 Click the **Start** button, select **Printers and Faxes** icon. (for Windows NT 4.0 / 2000: Click the **Start** button, select **Settings**, and then click the **Printers** icon)
- 3 Right-click on the desired printer icon in the **Printer and Faxes** folder, and then select **Properties** in the pop-up menu.
- 4 Select **Device Settings** tab.



Windows XP



Windows NT 4.0 / 2000



Windows 98 / Me

- 5 Specifies the following printer settings within the **Installable options**:

Number of Paper Tray

Specifies the number of paper trays installed on the device.

HDD Unit

Select Installed if a hard disk drive is installed.

Finisher

If the printer is equipped with a Finisher, select it from the list.

Punch Unit

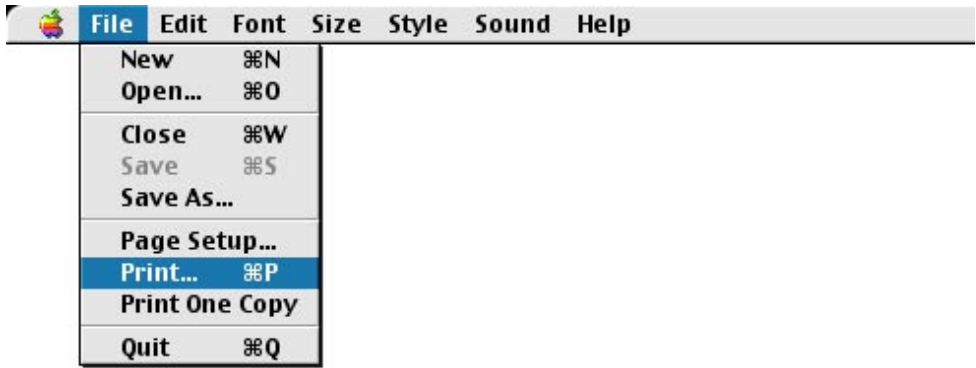
Select Installed if a Punch Unit is installed.

- 6 Click the button.

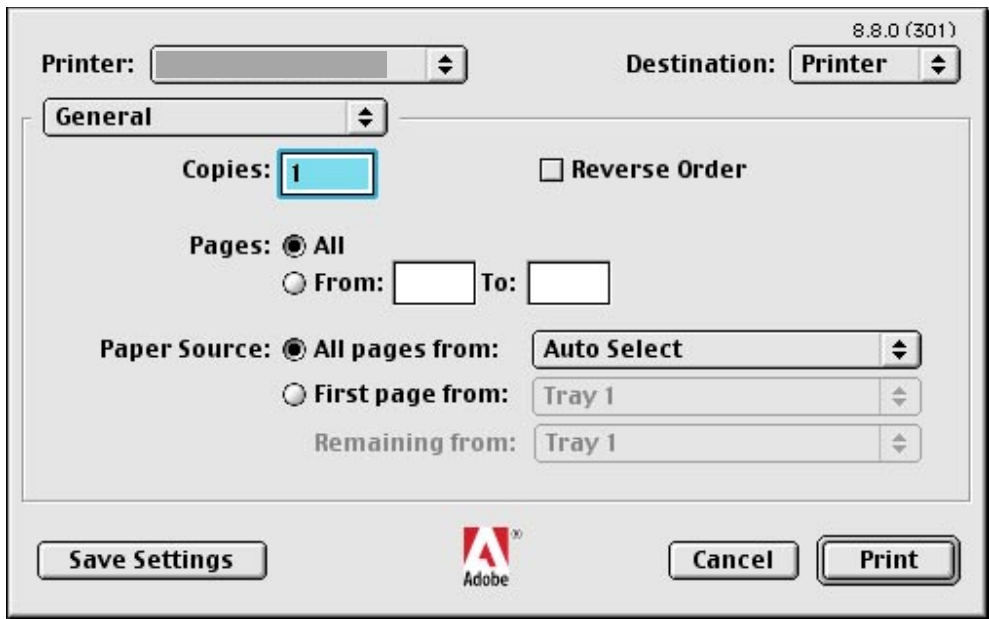
Opening the Print Dialog Box

To change the printer settings, open the dialog box for the printer properties by performing the following steps.

- 1 Select the **File** menu > **Print**.



- 2 Select the Panasonic printer.



- 3 In the print dialog box, you will see a number of titles in the pop-up menu. Select the desired menu title(s) and configure the properties as necessary. Click the **Save Settings** button to save the current settings for the default values.

General / Background Printing / Cover Page / Color Matching / Layout / Error Handling / PostScript Settings menus:

These menus are Macintosh or Adobe PostScript specific settings. Refer to Macintosh manuals, help topics, and/or Online Support.

Output / Quality / Printer Specific Options menus:

These menus are **Panasonic Printing System** associated settings. For additional details, refer to the page(s) relevant to the subject you are interested in.

Output menu : see page 24

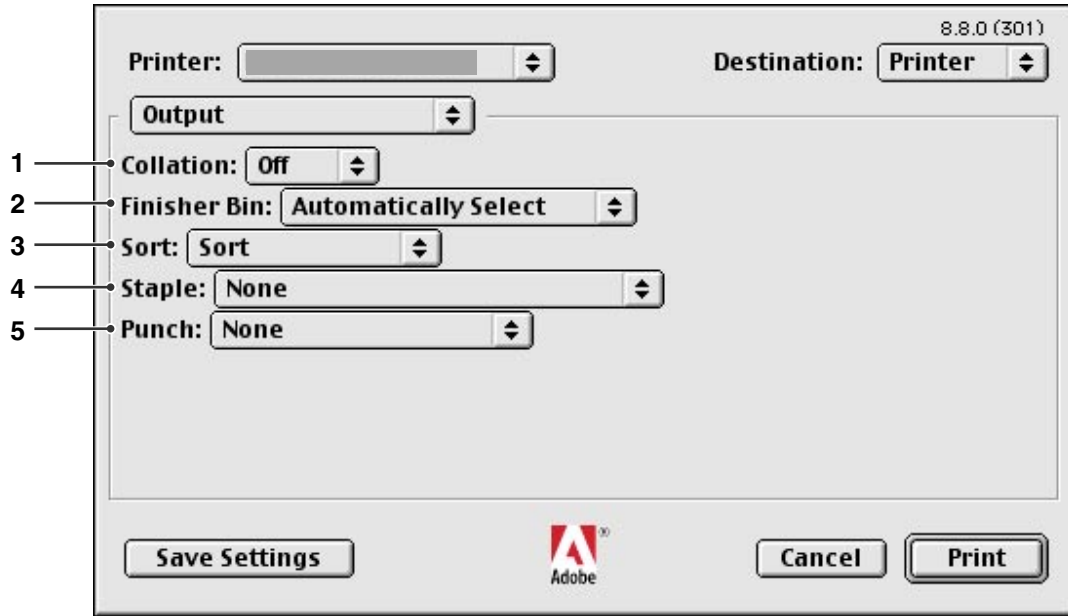
Quality menu : see page 26

Printer Specific Options menu : see page 28

Output Menu

Output menu is used for configuring output settings.

Configuring the Printer Driver Settings
(for Macintosh OS 8.6/9.x)



- 1. **Collation**
This feature is not available on these machines.
- 2. **Finisher Bin**
Specifies the output tray.

Automatically Select	Automatically selects one of the following output trays.
Inner Tray	Sends printed jobs to the inner tray.
Outer Tray	Sends printed jobs to the outer tray. (Selection only displays if the printer is equipped with an outer tray)
Finisher	Sends printed jobs to the finisher. (Selection only displays if the printer is equipped with a finisher)

3. Sort

Specifies how pages are sorted when multiple copies are printed.

Non Sort	Print individual pages in the specified quantity. For example, if you print three copies of a five-page document, the printer prints page 1 three times before printing page 2 and so on.
Sort	Copies are stacked in the order they are printed. Multiple copies are printed in separate sets in the specified quantity. For example, if you print three copies of a five-page document, the printer prints pages 1-5 three times.
Rotate Stack	Each set is rotated and stacked uniformly.
Rotate Sort	Each set is rotated and sorted.
Shift Stack	Each set is shifted and stacked uniformly.
Shift Sort	Each set is shifted and sorted.

Note:

- *Shift* is available only if the printer is equipped with a finisher.
- *Rotate* is available only when **Paper Source** is set to **Automatically Select**.
- *Rotate* requires paper of the specified size to be loaded in two trays, loaded for landscape and portrait printing.

4. Staple

Specifies the position of the staple. Choose the position from **Left 1, Left 2, Right 1, Right 2, Top 2** or **Saddle Stitch**.

Note:

- Only available if the printer is equipped with an optional finisher.
- Available staple position may be different depending on the finishers.
- The staple capacity differ depending on the types of finisher and the paper size. (i.e. up to 50 sheets, Letter or A4 size, 1-Bin Saddle Stitch Finisher) Refer to Specifications in the Operating Instructions (For Basic Function) provided another booklet.
- When setting the staple position to Saddle Stitch, set paper in Landscape position.

5. Punch

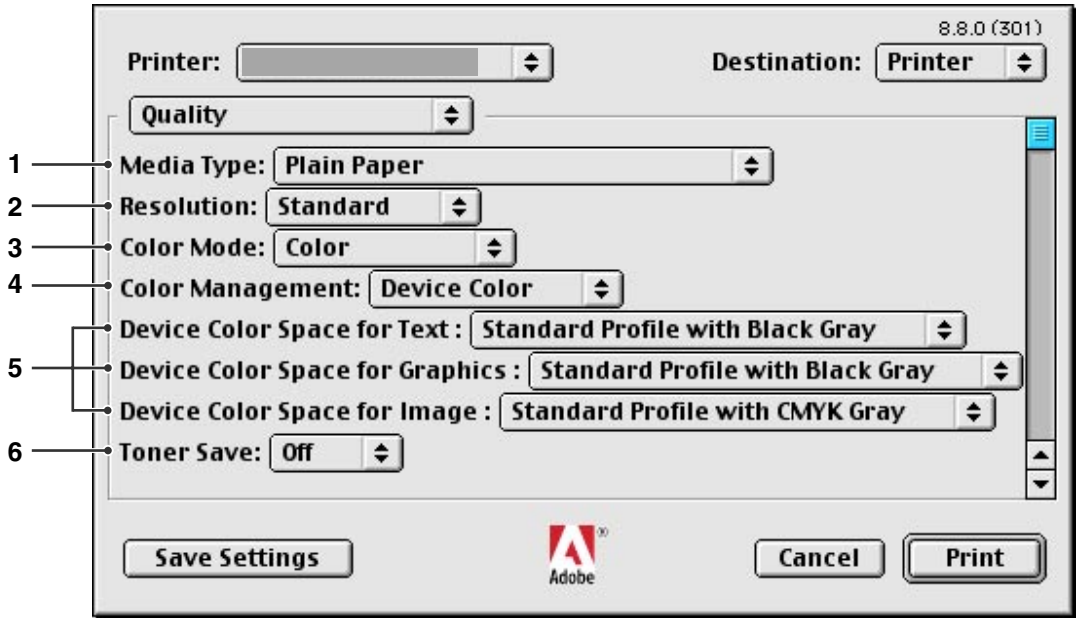
Specifies the hole punch position.

Note:

- Only available if the printer is equipped with an optional finisher and puncher unit.
- Hole punching can be performed on the following paper sizes.
A3, A4, B4(JIS), B5(JIS), Ledger, Legal, Letter and FLS2

Quality Menu

Quality menu configures the settings that determine the print quality.



1. Media Type

Specifies the type of paper.

Note:

- Verify that the media type selection in the control panel matches the media loaded on the trays. (Ex: Select "Transparency" when Transparencies are loaded in the Sheet Bypass)
- **Transparency** is only available if the selected **Paper Size** is **A4** or **Letter**.
- **Envelope** is only available if one of the envelope paper sizes is selected.
- If the **Media Type** is other than **Plain Paper**, **Glossy/Photo Paper** or **Recycled Paper**, then the **Multi-Purpose Tray** is the only selectable **Paper Source** within the **General** menu.

2. Resolution

Specifies the printing resolution. Choosing a higher resolution improves the print quality but slows printing.

Standard	Prints at a print engine resolution of 600×600 dpi.
Enhance	Prints at a print engine resolution of 1200×1200 dpi.

Note:

- Printing takes twice as long when **Enhance** is selected.
- When the **Media Type** is **Transparency**, the quality is automatically set to **Standard**.
- **Enhance** is not available unless the 512MB optional printer memory is installed.

3. **Color Mode**

Specifies whether to print in color or grayscale.

Color	Prints documents in color.
Photo Color	Prints photos with the optimal settings.
Grayscale	Prints documents in monochrome.

Note:

Photo Color mode takes more time to print a file.

4. **Color Management**

Specifies color settings to fine-tune color reproduction.

Device Color	Choose this option to adjust the original color settings.
None	Select None when using ICM or application's color management.
SWOP	Simulates printing to a standard American offset press.
Euroscale	Simulates printing to an European offset press.

5. **Device Color Space for Text / Graphics / Image**

Specifies color reproduction and black output for text, graphics and images.

Standard Profile with Black Gray	Print with color reproduction close to standard color monitors. Use only Black to reproduce intermediate shades of gray.
Vivid Profile with Black Gray	Print with more vivid color reproduction. A good choice for line art and graphics. Use only Black to reproduce intermediate shades of gray.
Standard Profile with CMYK Gray	Print with color reproduction close to standard color monitors. Use the four colors of CMYK to reproduce intermediate shades of gray.
Vivid Profile with CMYK Gray	Print with more vivid color reproduction. A good choice for line art and graphics. Use the four colors of CMYK to reproduce intermediate shades of gray.

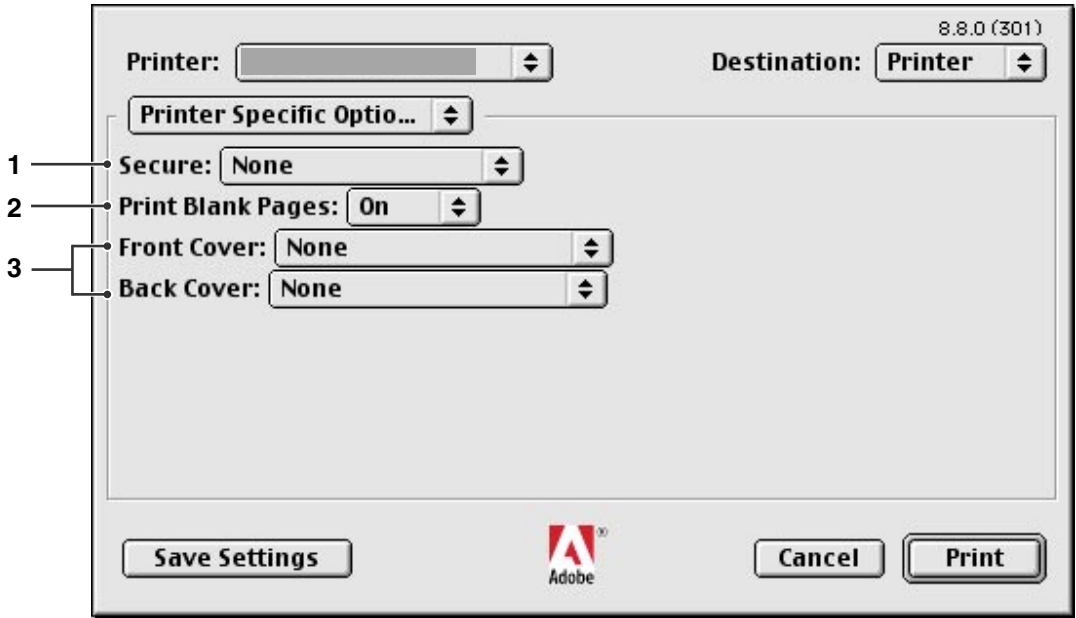
6. **Toner Save**

Choose **On** to conserve toner. The overall effect is lighter, so this feature is recommended for test printing or producing documents for which appearance is not critical.

Printer Specific Options Menu

Printer Specific Options menu is used for configuring Panasonic Printing System associated settings.

Configuring the Printer Driver Settings
(for Macintosh OS 8.6/9.x)



1. Secure

Printed documents can be saved on the printer's optional hard disk drive (HDD) if the printer is equipped with one. Saved documents can be printed from the printer's control panel. See "Mailbox Printing" on page 47. Three types of mailbox printing is available.

None	Mailbox printing is not applied.
Check then Print	Allows you to print one proof set, before proceeding to print a large multi-set with various settings. The documents data will be deleted from the printer after printing.
Mailbox	Saves print data in the printer, in the mailbox specified by the User ID . The User ID must be entered to print documents saved in Mailbox. The document data will remain in the printer until it is deleted.
Secure Mailbox	Saves print data in the printer, in the mailbox specified by the User ID . The User ID and Password must be entered to print confidential documents saved in Secure Mailbox. The document data will remain in the printer until it is deleted.

Note:

- Using mailbox printing requires that the optional **Hard Disk Drive Unit** is installed in the printer. In order to utilize the mailbox function of the Panasonic printer, the user information must be input prior to installing the PS printer driver. The PS Driver Security Utility to change the setting before installing the PS printer driver. For more detail, refer to "Operating Instructions (For Setting Up PostScript3 Printer Driver)".

2. **Print Blank Pages**

Choose **On** to enable printing blank pages.

Note:

*The **Print Blank Pages** is not selectable if the **Pages per sheet** or **Print on Both Sides** is set to be enabled on the **Layout** menu.*

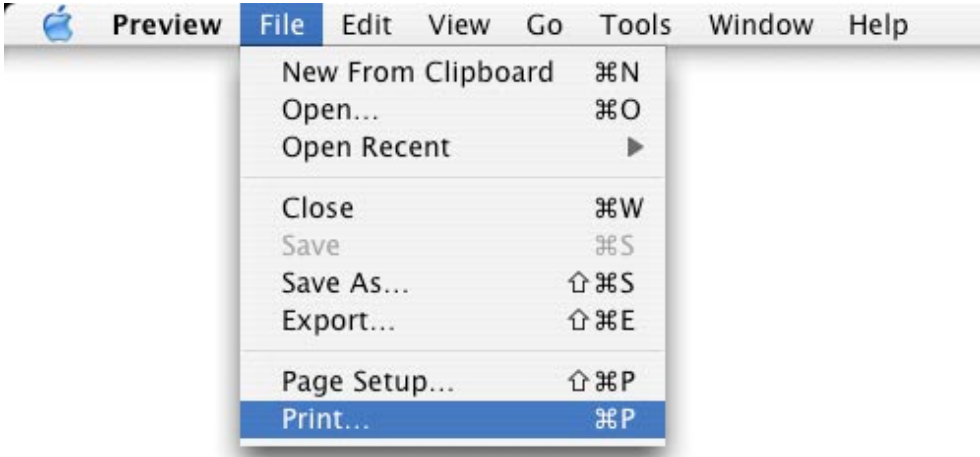
3. **Front / Back Cover**

You can configure the settings for cover pages. To use a cover page, select **Front Cover** or **Back Cover**, specifies the paper source used for pages for the Front and Back covers.

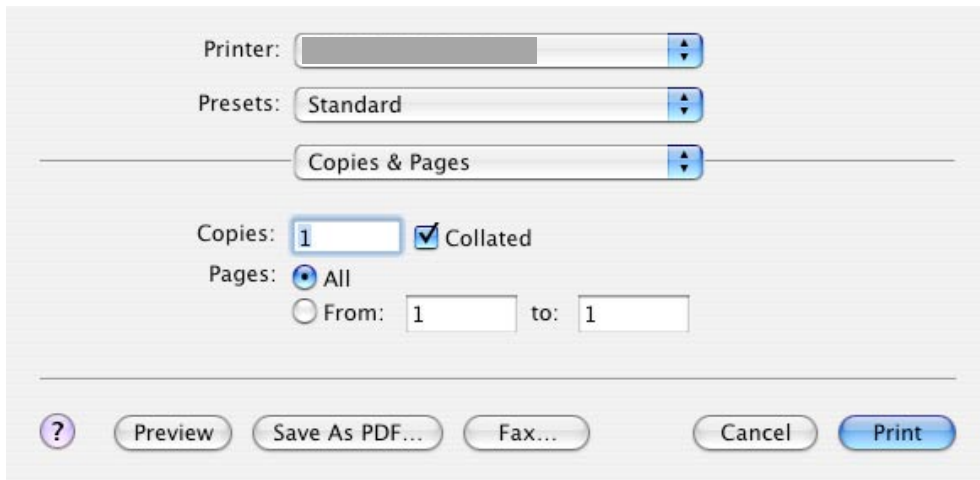
Opening the Print Dialog Box

To change the printer settings, open the dialog box for the printer properties by performing the following steps.

- 1 Select the **File** menu > **Print**.



- 2 Select the Panasonic printer.



- 3 In the print dialog box, you will see a number of titles in the pop-up menu. Select the desired menu title(s) and configure the properties as necessary. Select Save Custom Setting menu to save the current settings for the default values.

Copies & Pages / Layout / Output Options / Scheduler / Paper Handling / ColorSync / Cover Page / Error Handling / Paper Feed / Summary menus:

These menus are Macintosh or Adobe PostScript specific settings. Refer to Macintosh manuals, help topics, and/or Online Support.

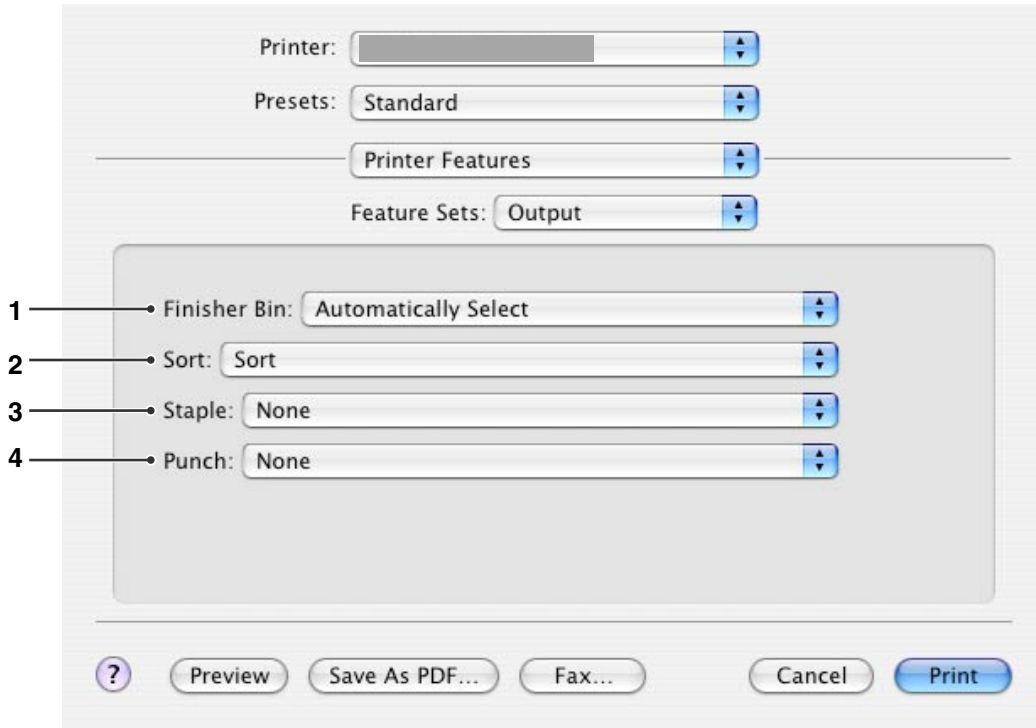
Printer Features menu:

There are four kinds of Feature Sets in the Printer Features menu. These are **Panasonic Printing System** associated settings. For additional details, refer to the page(s) relevant to the subject you are interested in.

- Output menu : see page 32
- Quality_1 menu : see page 34
- Quality_2 menu : see page 36
- Miscellaneous menu : see page 37

Output Menu (in Printer Features Menu)

Output menu is used for configuring output settings.



1. Finisher Bin

Specifies the output tray.

Automatically Select	Automatically selects one of the following output trays.
Inner Tray	Sends printed jobs to the inner tray.
Outer Tray	Sends printed jobs to the outer tray. (Selection only displays if the printer is equipped with an outer tray)
Finisher	Sends printed jobs to the finisher. (Selection only displays if the printer is equipped with a finisher)

2. Sort

Specifies how pages are sorted when multiple copies are printed.

Non Sort	Print individual pages in the specified quantity. For example, if you print three copies of a five-page document, the printer prints page 1 three times before printing page 2 and so on.
Sort	Copies are stacked in the order they are printed. Multiple copies are printed in separate sets in the specified quantity. For example, if you print three copies of a five-page document, the printer prints pages 1-5 three times.
Rotate Stack	Each set is rotated and stacked uniformly.
Rotate Sort	Each set is rotated and sorted.
Shift Stack	Each set is shifted and stacked uniformly.
Shift Sort	Each set is shifted and sorted.

Note:

- *Shift* is available only if the printer is equipped with a finisher.
- *Rotate* is available only when **Paper Source** is set to **Automatically Select**.
- *Rotate* requires paper of the specified size to be loaded in two trays, loaded for landscape and portrait printing.

3. Staple

Specifies the position of the staple. Choose the position from **Left 1**, **Left 2**, **Right 1**, **Right 2**, **Top 2** or **Saddle Stitch**.

Note:

- Only available if the printer is equipped with an optional finisher.
- Available staple position may be different depending on the finishers.
- The staple capacity differ depending on the types of finisher and the paper size. (i.e. up to 50 sheets, Letter or A4 size, 1-Bin Saddle Stitch Finisher) Refer to Specifications in the Operating Instructions (For Basic Function) provided another booklet.
- When setting the staple position to Saddle Stitch, set paper in Landscape position.

4. Punch

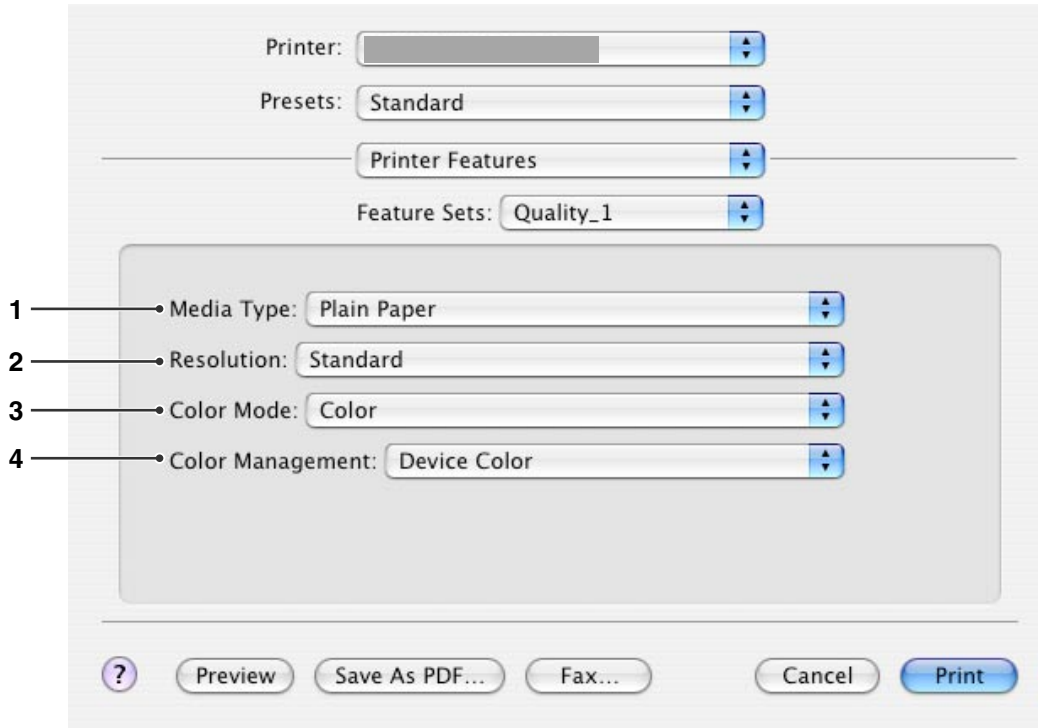
Specifies the hole punch position.

Note:

- Only available if the printer is equipped with an optional finisher and puncher unit.
- Hole punching can be performed on the following paper sizes.
A3, A4, B4(JIS), B5(JIS), Ledger, Legal, Letter and FLS2

Quality_1 Menu (in Printer Features Menu)

Quality_1 menu configures the settings that determine the print quality.



1. Media Type

Specifies the type of paper.

Note:

- Verify that the media type selection in the control panel matches the media loaded on the trays. (Ex: Select "Transparency" when Transparencies are loaded in the Sheet Bypass)
- **Transparency** is only available if the selected **Paper Size** is **A4** or **Letter**.
- **Envelope** is only available if one of the envelope paper sizes is selected.
- If the **Media Type** is other than **Plain Paper**, **Glossy/Photo Paper** or **Recycled Paper**, then the **Multi-Purpose Tray** is the only selectable **Paper Source** within the **General** menu.

2. Resolution

Specifies the printing resolution. Choosing a higher resolution improves the print quality but slows printing.

Standard	Prints at a print engine resolution of 600×600 dpi.
Enhance	Prints at a print engine resolution of 1200×1200 dpi.

Note:

- Printing takes twice as long when **Enhance** is selected.
- When the **Media Type** is **Transparency**, the quality is automatically set to **Standard**.
- **Enhance** is not available unless the 512MB optional printer memory is installed.

3. Color Mode

Specifies whether to print in color or grayscale.

Color	Prints documents in color.
Photo Color	Prints photos with the optimal settings.
Grayscale	Prints documents in monochrome.

Note:

Photo Color mode takes more time to print a file.

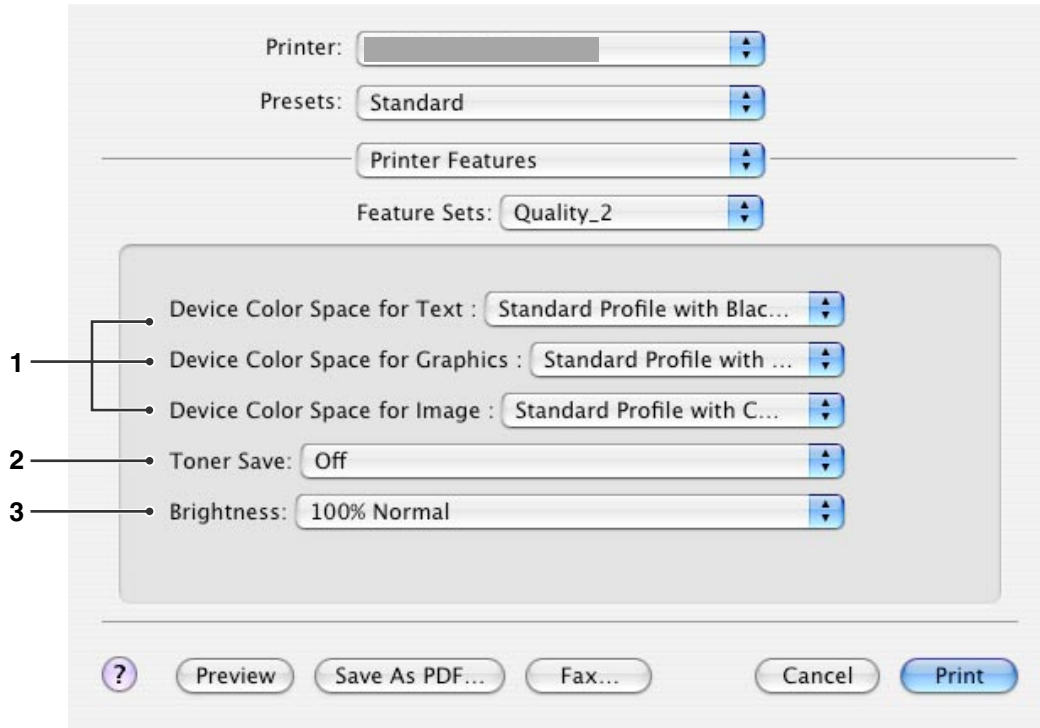
4. Color Management

Specifies color settings to fine-tune color reproduction.

Device Color	Choose this option to adjust the original color settings.
None	Select None when using ICM or application's color management.
SWOP	Simulates printing to a standard American offset press.
Euroscale	Simulates printing to an European offset press.

Quality_2 Menu (in Printer Features Menu)

Quality_2 menu configures the settings that determine the print quality.



1. Device Color Space for Text/Graphics/Image

Specifies color reproduction and black output for text, graphics and images.

Standard Profile with Black Gray	Print with color reproduction close to standard color monitors. Use only black to reproduce intermediate shades of gray.
Vivid Profile with Black Gray	Print with more vivid color reproduction. A good choice for line art and graphics. Use only black to reproduce intermediate shades of gray.
Standard Profile with CMYK Gray	Print with color reproduction close to standard color monitors. Use the four colors of CMYK to reproduce intermediate shades of gray.
Vivid Profile with CMYK Gray	Print with more vivid color reproduction. A good choice for line art and graphics. Use the four colors of CMYK to reproduce intermediate shades of gray.

2. Toner Save

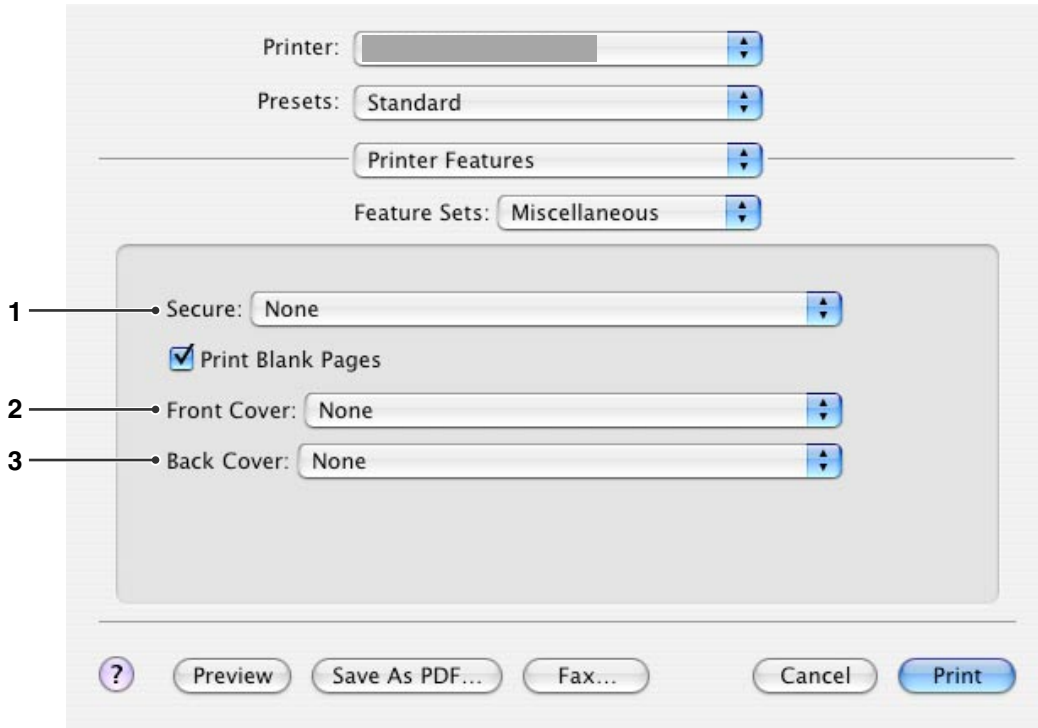
Choose **On** to conserve toner. The overall effect is lighter, so this feature is recommended for test printing or producing documents for which appearance is not critical.

3. Brightness

Color brightness is adjustable. 100% is normal brightness. Brightness darkens as the numerical value grows.

Miscellaneous Menu (in Printer Features Menu)

Miscellaneous menu is used for configuring Panasonic Printing System associated settings.



1. Secure

Printed documents can be saved on the printer's optional hard disk drive (HDD) if the printer is equipped with one. Saved documents can be printed from the printer's control panel. See "Mailbox Printing" on page 47. Three types of mailbox printing is available.

None	Mailbox printing is not applied.
Check then Print	Allows you to print one proof set, before proceeding to print a large multi-set with various settings. The documents data will be deleted from the printer after printing.
Mailbox	Saves print data in the printer, in the mailbox specified by the User ID . The User ID must be entered to print documents saved in Mailbox. The document data will remain in the printer until it is deleted.
Secure Mailbox	Saves print data in the printer, in the mailbox specified by the User ID . The User ID and Password must be entered to print confidential documents saved in Secure Mailbox. The document data will remain in the printer until it is deleted.

Note:

- Using mailbox printing requires that the optional **Hard Disk Drive Unit** is installed in the printer. In order to utilize the mailbox function of the Panasonic printer, the user information must be input prior to installing the PS printer driver. The PS Driver Security Utility to change the setting before installing the PS printer driver. For more detail, refer to "Operating Instructions (For Setting Up PostScript3 Printer Driver)".

2. **Print Blank Pages**

Selecting this option will enable printing blank pages.

Note:

*The **Print Blank Pages** is not selectable if the **Print on Both Sides** is set to be enabled on the **Layout** menu.*

3. **Front/Back Cover**

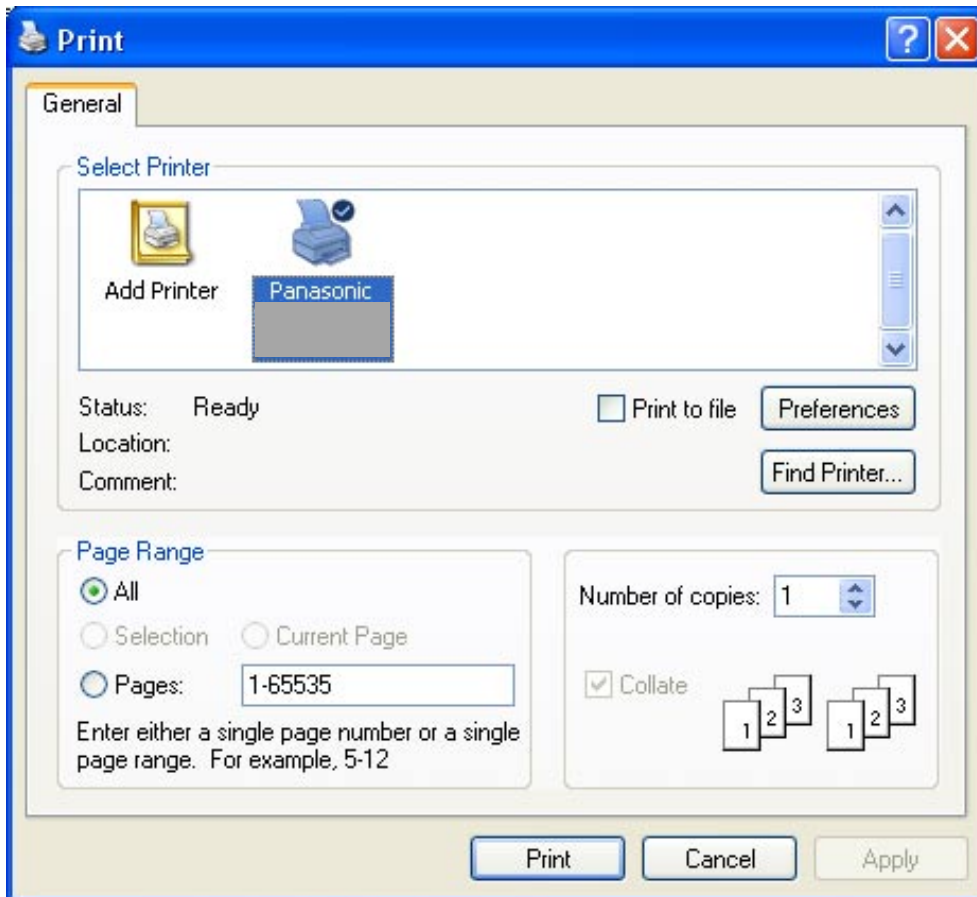
You can configure the settings for cover pages. To use a cover page, select **Front Cover** or **Back Cover**, specifies the paper source used for pages for the Front and Back covers.


Printing from Windows Applications

If the printer driver installed properly and is selected as the default printer in the printer setup, printing from any Windows application is a simple operation.

To print from most Windows applications, use the **Print** command in the **File** menu.

Selecting the **Print** command typically displays the following Print dialog box:



Setup your preferred configuration (Page Range, Number of copies, etc.) first, and then click the  button to start printing.

While documents are being printed, a printer icon appears in the System Tray near the clock in the bottom right hand corner of the screen. The icon disappears when printing is completed.

You may double-click the printer icon in the system tray to open and verify the details of the print queue.

Note:

If more than one printer is installed on your PC, follow the steps below to set a default printer:

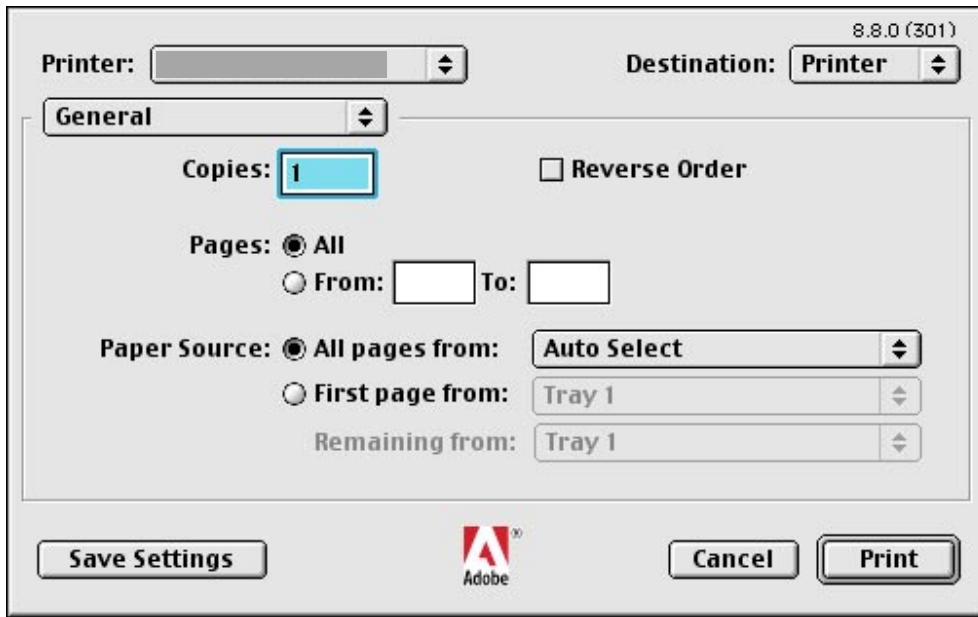
1. Click the **Start** button, select **Printers and Faxes** icon (for Windows 2000: Click the **Start** button, select **Settings**, and then click the **Printer** icon.).
2. Right-click on the desired printer icon, and then select **Set as Default Printer** in popup menu. The check mark next to the printer icon denotes a Default Printer.

Printing from Macintosh Applications

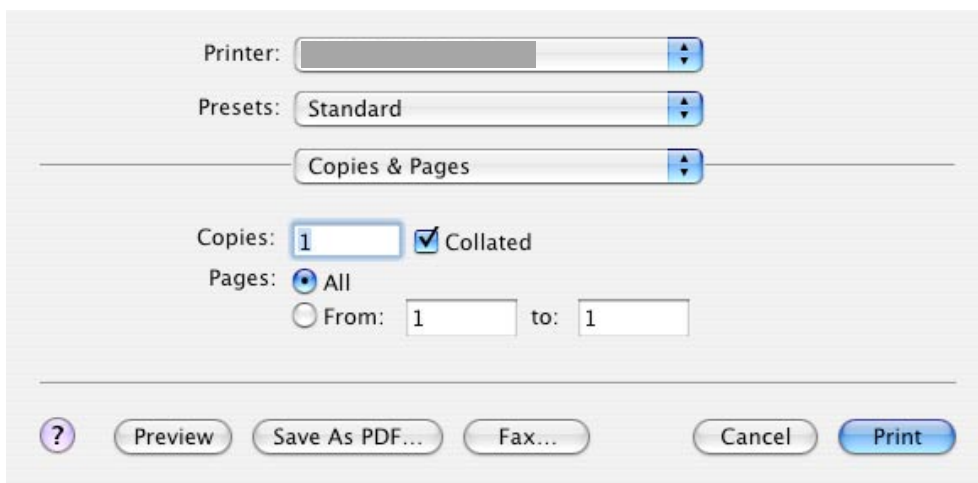
If the printer driver installed properly and is selected as the default printer in the printer setup, printing from any Macintosh application is a simple operation.

To print from most Macintosh applications, use the **Print** command in the **File** menu.

Selecting the **Print** command typically displays the following **Print** dialog box:



OS 8.6/9.x



OS X

Setup your preferred configuration (Page Range, Number of copies, etc.) first, and then click the **Print** button to start printing.

Note:

If more than one printer is installed on your Macintosh, the printer can be selected by Printer menu of the top of the dialog box.

For OS 8.6/9.x:

- Click the button to save the current settings for the default values.

For OS X:

- Select Save Custom Setting menu to save the current settings for the default values.
- Click the button to view a preview image of the printout, to check that the print options are set correctly.
- Click the button to save the print output as a PDF file.
- Click the button to apply the changes to the settings and to send a fax.

Using the Job Status Utility (Windows only)

The Job Status Utility is a utility software that notifies a PC of the status of a print/fax job. This utility is convenient for a network printer, as the print/fax job can be observed from a remote PC.

- A popup Completion Notice will display on your PC screen when the Print/Fax job is finished.
- To help you maintain records of the documents you send or print, the Job Status Utility is equipped to list the transaction result as a Log file.

Note:

- *The Job Status Utility can be used only with the Windows based PC.*
- *To use the Job Status Utility, IP Address has to be registered first with the PS Driver Security Utility.*
- *Rebooting the PC is required after the registration of the IP Address on the Windows 9x/Me.*

Using the Job Status Utility (Windows only)

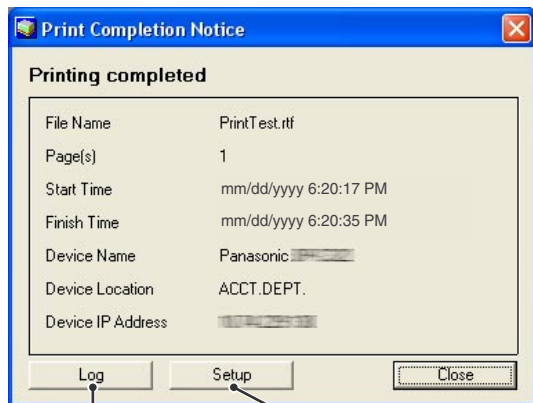
The Job Status Utility software will display a popup Completion Notice on your PC screen when the Print, PC Fax, Copy, and Fax jobs are finished.

The information displayed in the **Completion Notice** vary according to the type of job being performed.

■ Completion Notice

After a job completes, you will receive a notice similar to the ones shown below on your PC's screen.

Print Completion Notice



Opens **Log** window.

Opens **Setup** window.


PC Fax Completion Notice



Using the Job Status Utility (Windows only)

Job Status Utility Log


To help you maintain records of the documents you send or print, the **Job Status Utility** is equipped to list the transaction result as a Log file. The latest 100 transactions are recorded on the log.

To start **Job Status Utility Log** window, click **Log** button on the **Completion Notice** window or right-click the Job Status Utility icon  on the taskbar, and then select the **Log** from the menu.



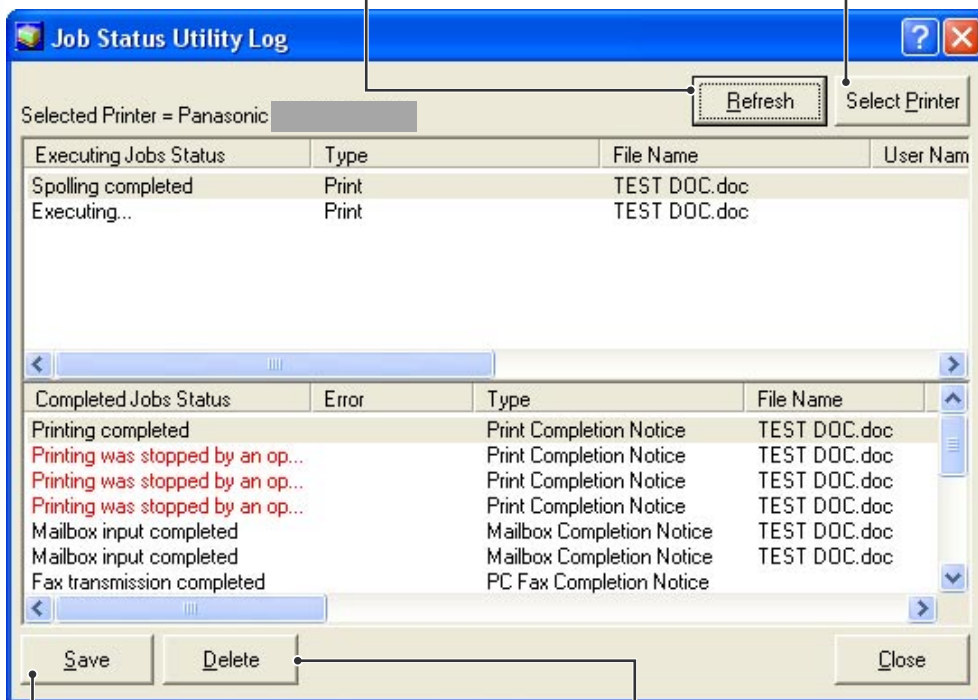
The **Job Status Utility Log** window appears.

Note:

When the Job Status Utility icon  is not on the taskbar, select **All Programs** → **Panasonic** → **Job Status Utility** → **Job Status Utility** from the **Start** menu to activate the Job Status Utility icon.

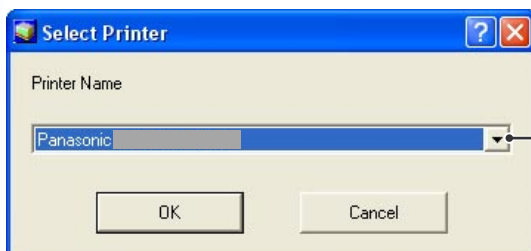
Refreshes the Job Status Window

Opens the Select Printer Window (See Below)



Saves the displayed Log as a CSV format file. (Only for Completed Job Status)

Deletes the Selected Print Jobs, or all Completed Jobs in the Log.



Chooses the printer name to monitor.


NOTE

Job Status Utility does not appear if the device is connected with a USB cable.

Using the Job Status Utility (Windows only)

■ Setup


You may set the condition to display the **Completion Notice** window after the job is completed.

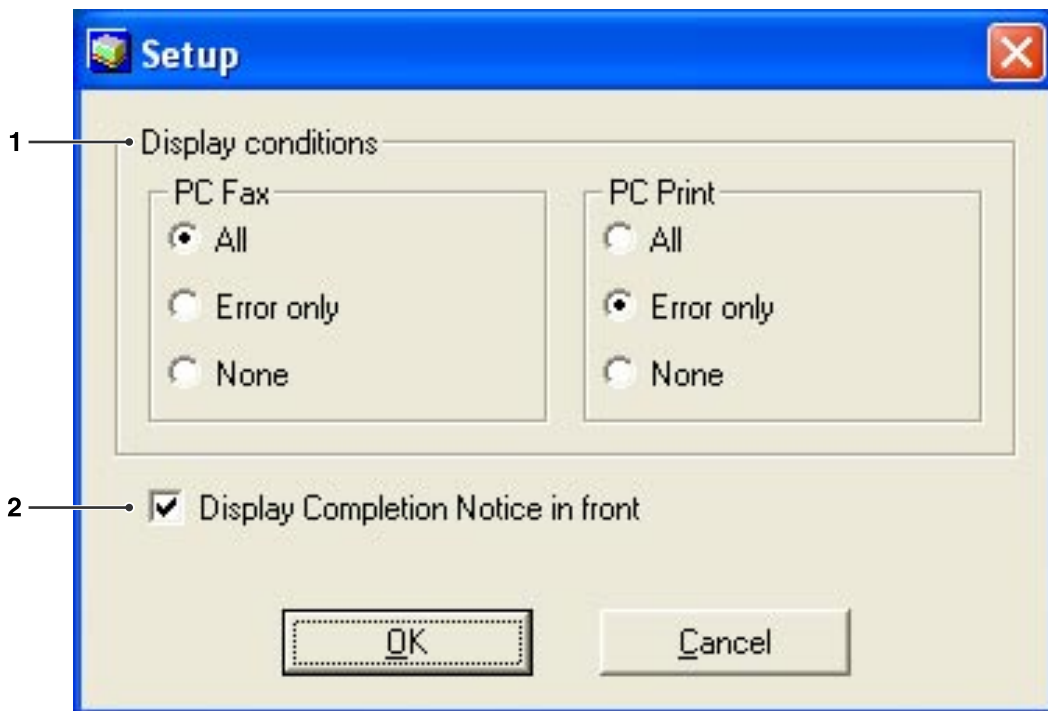
To start **Setup** window, click  button on the **Completion Notice** window, or right-click the Job Status Utility icon  on the taskbar, and then select the **Setup** from the menu.



The **Setup** window appears.

Note:

When the Job Status Utility icon  is not on the taskbar, select **All Programs** → **Panasonic** → **Job Status Utility** → **Job Status Utility** from the **Start** menu to activate the Job Status Utility icon.





1. Display Condition

Selects the condition to display the **Completion Notice** window.

All	Always display after each transmission.
Error only	Displays only when an error occurs.
None	Do not display.

2. Display Completion Notice in front.

Specify whether the **Completion Notice** window is displayed on the front of other windows.

When this option is not selected, the **Completion Notice** window is displayed in the back of other windows. When the **Completion Notice** is displayed, the  icon on the taskbar blinks. Click the  icon to bring the **Completion Notice** to the front.

Using the Job Status Utility (Windows only)

Information displayed in the Completion Notice and the Job Status Utility Log. (See page 44)

Status	Indicates the status of the job. (Completed, canceled, etc.)
Error	Indicates the error information if available. (Information code, error message, etc.)
Type	Indicates the type of the job. The Completion Notice is used in common with PC Fax job, PC Print job, Copy job, and Fax job (Sent from the device).
File Name	Indicates the PC printed file name.
Page(s) (Print)	Indicates the number of pages of PC Print job, and Copy job.
Page(s) (Fax)	Indicates the number of pages of PC Fax job, and Fax job (Sent from the device).
Start Time	Indicates the start date and time of the job. The format of the date and time depends on the Windows setting of your PC.
Finish Time	Indicates the completion date and time of the job. The format of the date and time depends on the setting of Windows of your PC.
Duration Time	Indicates the duration time of the job. (hh:mm:ss)
Fax Number/Email Address	Indicates the Fax Number, or Email Address (Fax job only) of the Fax transmission.
Destination Name	Indicates the registered Destination Name in the Fax driver's Phonebook when using the Phonebook of the Fax driver to transmit a document.
Device Name	Indicates the Device Name registered in the device that is used for the Fax transmission
Device Location	Indicates the Device Location registered in the device that is used for the Fax transmission.
Device IP Address	Indicates the Device IP Address that is used for the Fax transmission.
User Name	Indicates the Department ID of the current running job.
Machine Name	Indicates the Computer Name / IP Address of the current running job.

Mailbox Printing

Printed documents can be saved on the printer's optional hard disk drive (HDD) if the printer is equipped with one. Saved documents can be printed from the printer's control panel. Three types of mailbox printing is available.

Check Then Print:

Allows you to print one or more (can be adjusted on the device's control panel) proof set, before proceeding to print a large multi-set with various settings.

The **User ID** must be entered to utilize the Check Then Print function.

The documents data will be deleted from the printer after printing.

Mailbox:

Saves print data in the printer, in the mailbox specified by the **User ID**. The **User ID** must be entered to print documents saved in Mailbox. The document data will remain in the printer until it is deleted.

Secure Mailbox:

Saves print data in the printer, in the mailbox specified by the **User ID**. The **User ID** and **Password** must be entered to print confidential documents saved in Secure Mailbox. The document data will remain in the printer until it is deleted.

The PS Driver Security Utility adds User ID, Password, and Department Code information to print data that is printed using the PS Driver. This utility allows users to take advantage of the print job statistics, security and other advanced Panasonic printer functions.

Mailbox Printing

■ Using PS Driver Security Utility

Note:

For Windows 98/Me:

When the setup is completed, a message is displayed prompting you to restart your PC. Click the button to restart your PC. After rebooting your PC, re-configure the Device Options Tab settings because the default settings are restored.

For Macintosh:

In order to utilize User ID, Password and Department Code, the appropriate information must be input prior to installing the PS printer driver. The PS Driver Security Utility to change the setting before installing the PS printer driver.

- If you have already installed the PS printer driver, uninstall it, change the setting using the PS Driver Security Utility, then install the PS printer driver.
- If you want to change User ID, Password or Department Code after it begins to operate the printer, uninstall the PS printer driver, change the setting using the PS Driver Security Utility, then install the PS printer driver again.

1 Double-click the **PS Driver Security Utility** icon on your desktop.

2 The **PS Driver Security Utility** window will appear.



3 Enter the following information.

Printer

Select the printer.

User ID

Input the user ID (8-digit number maximum) to be used for Check Then Print, Mailbox, or Secure Mailbox.

Password

Input the password (4-digit number) to be used for Secure Mailbox.

Department Code

Input the department code (8-digit number maximum) to be used by the accounting manager.

4 Click the button.

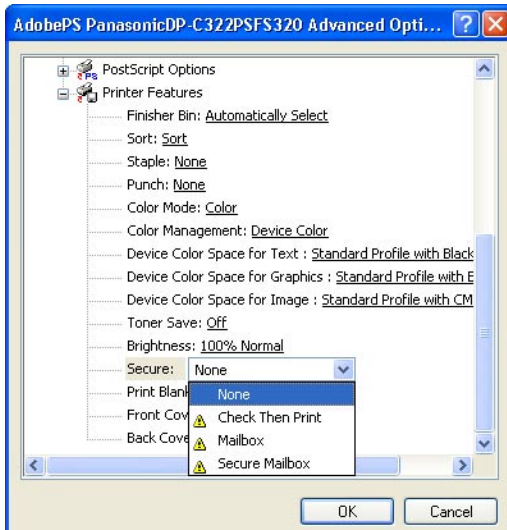
Mailbox Printing

■ Saving a Print Job (from a PC)

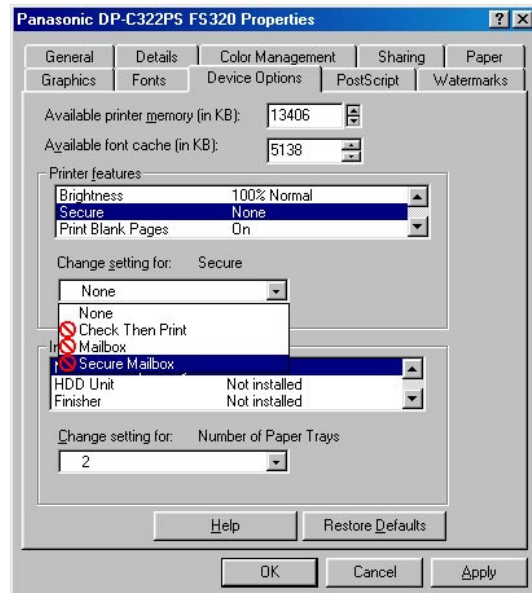
- 1 Select **Print** in the **File** menu of the application software, and click **Properties**.
- 2 Select **Check Then Print**, **Mailbox** or **Secure Mailbox** in **Secure** setting in the **Advanced Settings** of the **PS Printer Driver**.
(For Windows 9x/Me)
In the **Device Options Tab**, select **Secure** in the **Printer features**. Then **Check Then Print**, **Mailbox**, or **Secure Mailbox** can be selected.

Note:
Refer to "Configuring the Printer Driver Settings" of your OS for **Secure** setting.

- 3 Click the **Print** button to save the document data. The first proof set will start printing if **Check Then Print** is selected.



(For Windows XP / 2000)



(For Windows 98 / Me)

Mailbox Printing

■ Printing or Deleting Mailbox Data

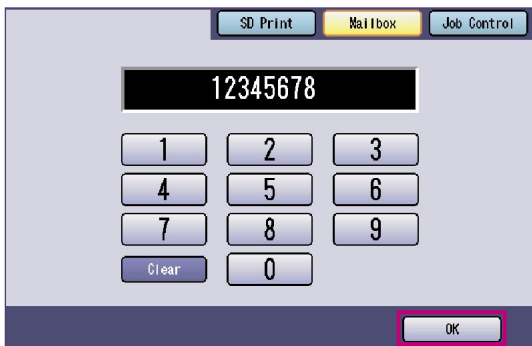
1 Press the **Print** key if set in other function mode.



2 **Print** display appears on the printer control panel. Enter the mailbox user ID number (up to 8-digit).



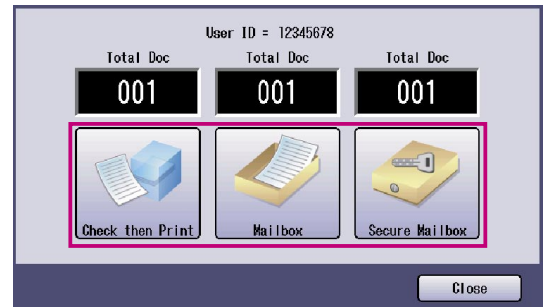
3 Select the **OK** button.



4 The total number of saved jobs in each mailbox is displayed. Select the desired mailbox.

Note:

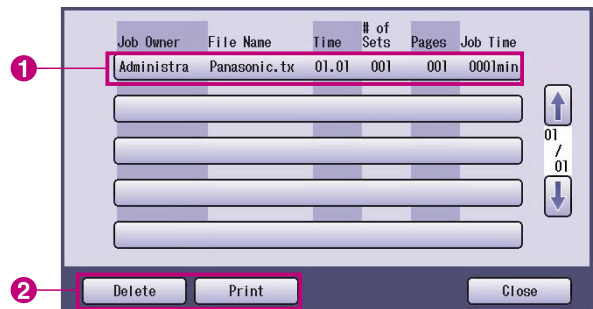
If there are only 1 saved job for the user, Mailbox selection screen is not displayed (Skip to 5).



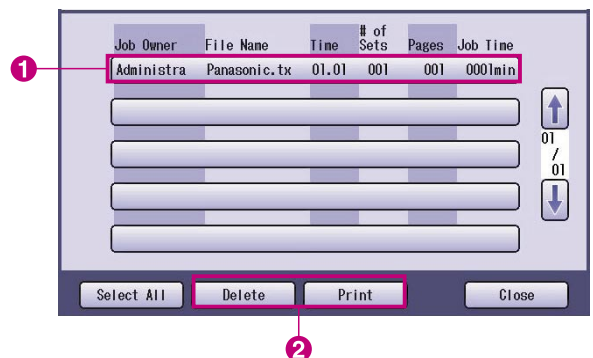
5 The display shows the saved print jobs in the selected mailbox. Choose the job you want to print, and select the **Print** or **Delete** button.

Select All button	Selects all print jobs. (Mailbox only)
Close button	Closes the mailbox display.

Check Then Print:

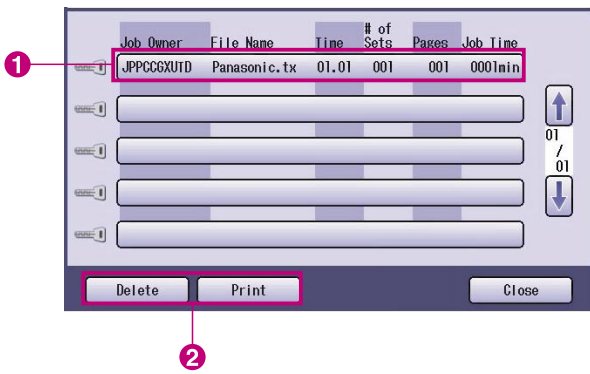


Mailbox:



Print Operation
(for Printer)

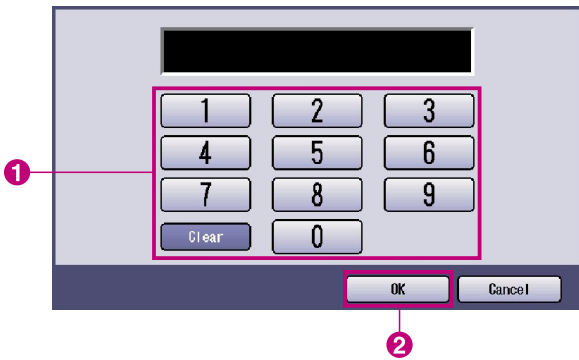
Secure Mailbox:



6 Secure Mailbox only

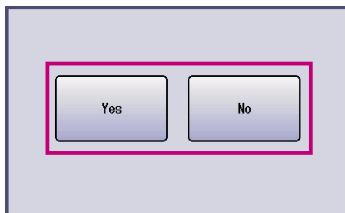
Password display appears if **Secure Mailbox** is selected.

Enter the **Password**, and then select the button.



7 Mailbox or Secure Mailbox

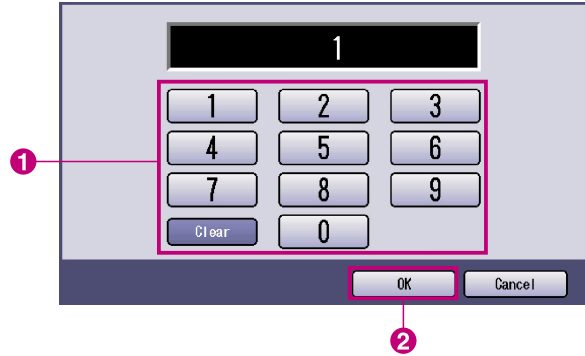
Select whether to delete the print job after printing.



8 Check then Print only

The number of copies is displayed.

Enter the number of copies and select the button to start printing.



Note:

After having finished printing the **Check Then Print** job, it will be removed from the printer's hard disk drive.

Job Control (Output Queue)

The **Job Control** menu of the printer control panel contains four buttons with the following functions.

- On Line** button : Turns the printer on-line.
- Off Line** button : Turns the printer off-line.
- Cancel Print** button : Stops the current print job and deletes the job from the output queue.
- Output Queue** button : Checks the current print jobs.

This section describes how to use the **Output Queue** button to perform operations on the print jobs in the output queue.

Print Operation
(for Printer)

1 Press the **Print** key if set in other function mode.

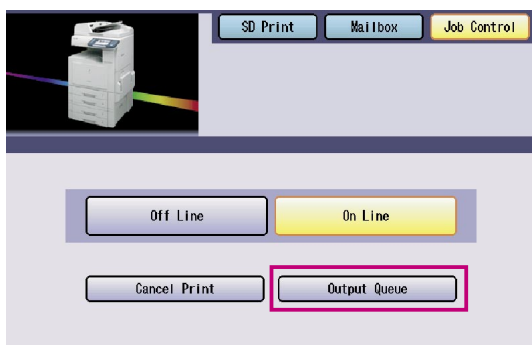


2 Print display appears on the printer control panel.

Select the **Job Control** button.

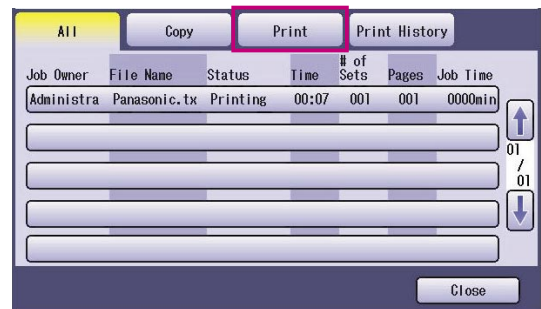


3 Select the **Output Queue** button.

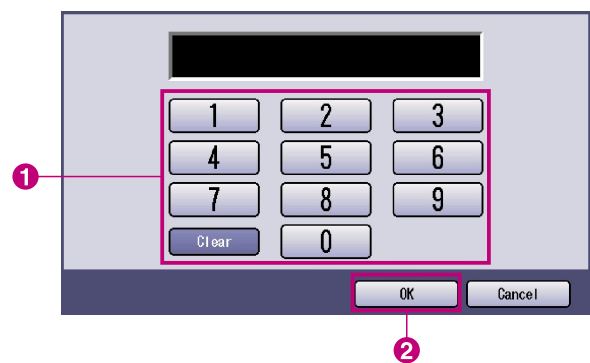


4 Displays a list of all pending output jobs that are usually processed on a first come first served basis.

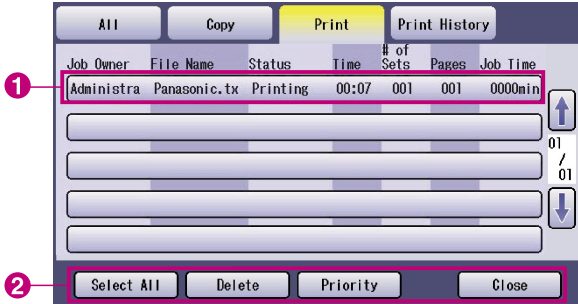
Select the **Print** tab.



5 Enter the password (4-digit), and then select the **OK** button.



- 6 Displays a list of current and pending **Print** jobs. Select the print job you want to manage, and choose one of the following tasks to perform.



<input type="button" value="Select All"/>	button	Selects all print jobs.
<input type="button" value="Delete"/>	button	Deletes the selected job from the Output Queue .
<input type="button" value="Priority"/>	button	Set or change the printing order of the selected job(s) in the Output Queue .
<input type="button" value="Close"/>	button	Close the Output Queue display.

Specifications

Printing Speed	DP-C262 : 26 sheets/minute : Black and White 21 sheets/minute : Color (A4/Letter size, Plain paper from Paper Tray, 600dpi, Simplex printing) DP-C322 : 32 sheets/minute : Black and White 21 sheets/minute : Color (A4/Letter size, Plain paper from Paper Tray, 600dpi, Simplex printing)
Resolution (dots per inch)	600 x 600, 1200 x 1200
Interface	USB 2.0 Ethernet (10Base-T/100Base-TX)
Printer Language	Adobe® PostScript® 3™
Fonts	136 Typeface fonts
Supplied Printer Driver	Windows 98, Windows Me, Windows NT 4.0 (With Service Pack 3 or later is required), Windows 2000, Windows XP, Windows Server 2003, Macintosh OS 8.6/9.x, Macintosh OS X 10.x
Operating System Support	Windows 98, Windows Me, Windows NT 4.0 (With Service Pack 3 or later is required), Windows 2000, Windows XP, Windows Server 2003, Macintosh OS 8.6/9.x, Macintosh OS X 10.x
Network Printing Protocol Support	LPR, IPP, SMB, Standard TCP/IP Port Printing (RAW/LPR), NetWare, AppleTalk

Printing Operation Failure

If the printing operation fails, check the following items first:

- The connecting cable (USB or Ethernet LAN cable) is properly connected.
- Power of the device is turned ON.
- Paper is loaded properly in the device.
- An error message is not displayed on the device. (See Note)

The above points can be verified by printing a test page. Refer to OS manuals, help topics, and/or Online Support for the procedures on test page printing.

NOTE

*The status of the devices can be verified by the **Device Monitor**.
Refer to the Operating Instructions (For Device Monitor).*

Documents Not Printing Correctly

Problem	Possible Cause / Solution(s)
Incorrect printing position or print is missing at the edge.	<ul style="list-style-type: none"> • Paper size or printing orientation is different between the application settings and the printer driver settings - Specify the settings again. • The specified paper has not been loaded into the device - Check the settings again or load the appropriate paper. • The document margin is not sufficient.
Characters and symbols not used in documents are printed.	Verify that the correct machine has been selected by users as the printer driver.
Printing operation takes excessive time.	The wait time for printing operations depends on the spool settings.
Although print data is transferred to the device, it is not printed.	<ul style="list-style-type: none"> • Make sure the printer is Online. • Make sure the USB printer cable is connected properly. • Restore the power if the On line LED is Off even if the USB printer cable is connected.
Printing stops in the middle of the run.	<ul style="list-style-type: none"> • Check whether there is a Network problem.
Document is not printed from the Multi-Purpose tray (Sheet Bypass).	<ul style="list-style-type: none"> • Verify the Paper Size set to the Multi-Purpose tray (Sheet Bypass). • Set the Paper Size as the following procedures. <ol style="list-style-type: none"> 1. Press the <input type="button" value="Copy"/> key. 2. Select "Paper/Output Tray". 3. Select "Change Size/Media". 4. Select the paper size and select "OK". <p>Note: Select "Auto" on step 4 if the following paper size is loaded on the Multi-Purpose tray (Sheet Bypass). The Paper Size is automatically set properly. For USA and Canada users : Ledger, Ledger, Letter, Invoice Except for USA and Canada users : A3, B4, FLS, A4, A5</p>
Document is not printed correctly, and the following message is printed out instead. "This job contains Binary Data, but your printer requires a special driver setting to receive binary data on this channel."	Verify that the Output protocol in the Device Settings is set to ASCII.

Error Messages Displayed on the Computer

Problem	Possible Cause / Solution(s)
Error writing to USB. Unable to write to the Specified device.	Verify that the device is connected to the computer correctly. Verify that the power of the device is turned On.
Error writing to USB. Printer timeout error occurred.	Verify that the power of the device is turned On. Excessive data volume or number of pages may overflow the device's memory, disabling data reception. Increase the timeout setting value in properties (for transmission retry).
Printing is disabled due to an error in the current printer settings.	Differences in settings such as paper size or printing orientation exist between the application and the printer driver. Correct the settings.

Error Messages Displayed on Your Machine

If a document is not printed out, an error may have occurred. From the error messages displayed on the Control Panel, it is possible to know what caused the problem, and how the problem can be taken care of.

Checking Error Messages: Press the **Print** key, select the **Job Control** button and the **Output Queue** button. Then, select the **Print History** tab. The error message(s) are shown on the Status column.

Once you know the error message, check below for the cause and solution for the error.

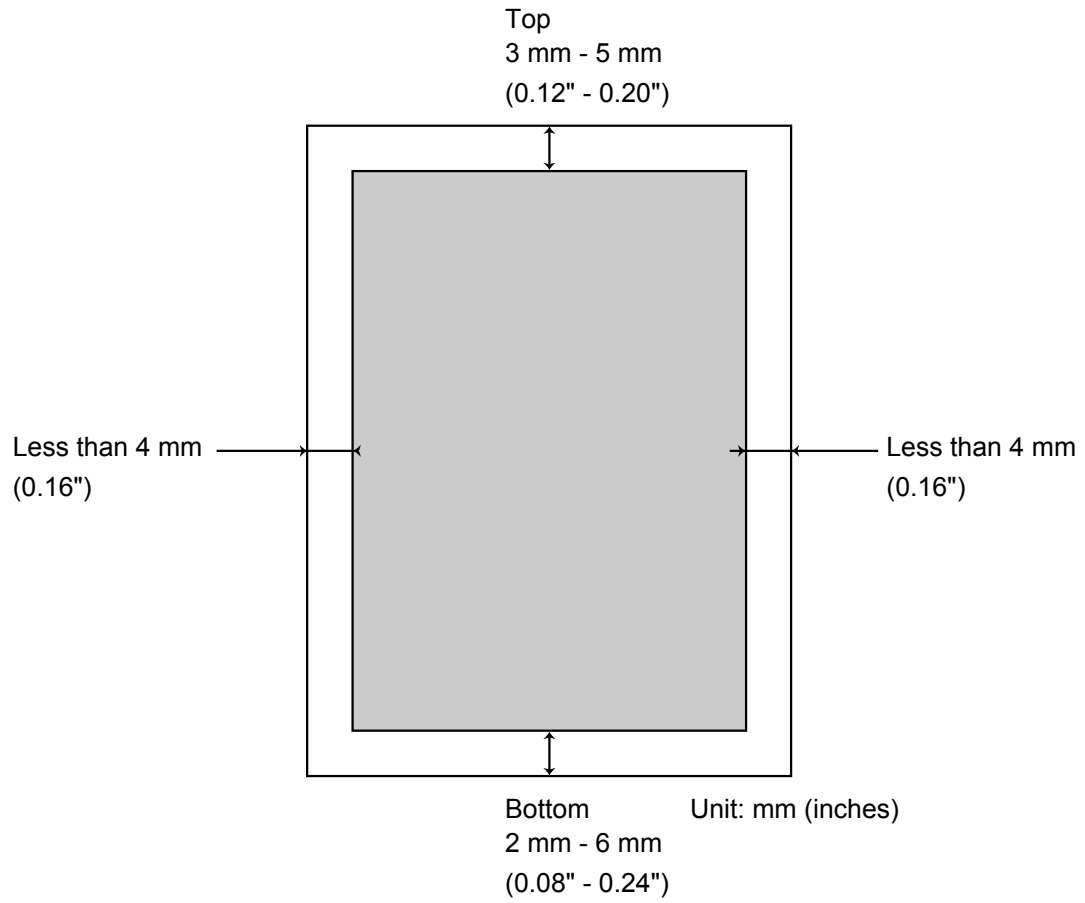


Error Messages	Possible Cause	Solution(s)
Print Parameter Error(001)	The Duplex Unit does not function properly.	Contact to the Panasonic Authorized Dealer to maintain your machine.
Print Parameter Error(002)	Specified a Paper Source which is not installed on your machine.	<ul style="list-style-type: none"> Verify the Installable option settings correctly on your printer driver. Verify the Number of Paper Tray settings correctly on your printer driver.
Print Parameter Error(004) Print Parameter Error(005)	Specified the Output Tray to Finisher . However, the Finisher Unit is not installed on the machine. Specified the Sort Method to Shift, or specified the position of the staple.	<ul style="list-style-type: none"> Verify the Installable option settings correctly on your printer driver. Verify the Finisher settings correctly on your printer driver.

Error Messages	Possible Cause	Solution(s)
Print Parameter Error(006)	Specified the hole punch position. However, the Punch Unit is not installed on the machine.	<ul style="list-style-type: none"> Verify the Installable option settings correctly on your printer driver. Verify the Punch Unit settings correctly on your printer driver.
Print Parameter Error(101)	Specified a Paper Source unable to print in Duplex. (Duplex printing is not possible from the tray set with A5 in Landscape format)	<ul style="list-style-type: none"> Specify the tray set with the A5 in portrait format. Select Automatically Select on the Paper Source menu.
Print Parameter Error(104)	Specified a Paper Source unable to shift sort. - Only when 1 Bin Finisher (DA-FS320) is in use. - It is not possible to shift sort with B5 in portrait format.	<ul style="list-style-type: none"> Specify the tray set with the B5 in Landscape format.
Print Parameter Error(106) Print Parameter Error(107)	Specified a wrong Paper Source when printing a document with stapling.	<ul style="list-style-type: none"> Verify the Installable option settings correctly on your printer driver. Verify the Finisher settings correctly on your printer driver. Select Automatically Select on the Paper Source menu.
Print Parameter Error(108) Print Parameter Error(109)	Specified a wrong Paper Source when printing a document with punching.	<ul style="list-style-type: none"> Verify the Installable option settings correctly on your printer driver. Verify the Punch Unit settings correctly on your printer driver. Select Automatically Select on the Paper Source menu.
Print Parameter Error(119)	Specified a wrong Media Type when printing a document with Rotate sorting.	<ul style="list-style-type: none"> Verify the Media Type setting on your machine. Select the same media type on the printer driver as set on your machine.
Printer Parameter Error(125)	Specified to staple documents of different document sizes.	<ul style="list-style-type: none"> Cancel Staple, and try print again.
Print Parameter Error(126)	Specified to Punch documents of different document sizes.	<ul style="list-style-type: none"> Cancel Punch , and try print again.

Printing Area

When printing to the device, there is a non-printable margin on all 4 sides.



Memo

USA Only

WARRANTY

PANASONIC DIGITAL DOCUMENT COMPANY MAKES NO WARRANTIES, GUARANTEES OR REPRESENTATIONS, EXPRESSED OR IMPLIED, TO THE CUSTOMER WITH RESPECT TO THIS PANASONIC MACHINE, INCLUDING BUT NOT LIMITED TO, ANY IMPLIED WARRANTY OF MERCHANTABILITY OR FITNESS FOR A PARTICULAR PURPOSE.

PANASONIC DIGITAL DOCUMENT COMPANY ASSUMES NO RISK AND SHALL NOT BE SUBJECT TO LIABILITY FOR ANY DAMAGE, INCLUDING, BUT NOT LIMITED TO DIRECT, INDIRECT, SPECIAL, INCIDENTAL OR CONSEQUENTIAL DAMAGES OR LOSS OF PROFITS SUSTAINED BY THE CUSTOMER IN CONNECTION WITH THE USE OR APPLICATION OF THIS PANASONIC MACHINE. SEE YOUR DEALER FOR DETAILS OF DEALER'S WARRANTY.

For Service, Call: _____

Panasonic Digital Document Company,
Unit of Panasonic Corporation of North America
Two Panasonic Way
Secaucus, New Jersey 07094
<http://panasonic.co.jp/pcc/en/>

Panasonic Canada Inc.
5770 Ambler Drive
Mississauga, Ontario L4W 2T3
<http://www.panasonic.ca>

For Customer Support (Except for
USA and Canada Users):
Panasonic Communications Co., Ltd.
Fukuoka, Japan
<http://www.panasonic.co.jp/global/>

T0905-0
PJQMC0557ZA
September 2005
Published in Japan