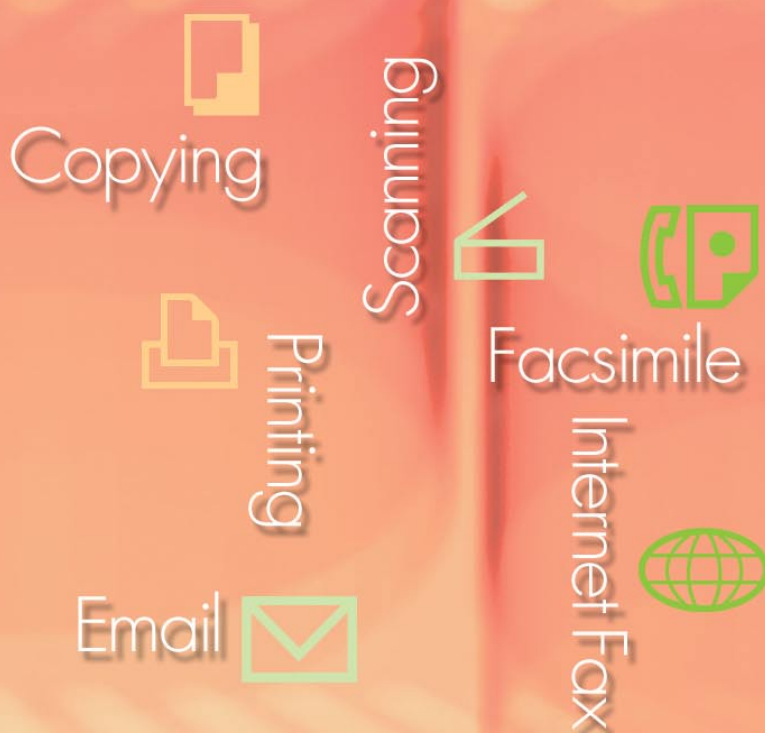


Panasonic®

Operating Instructions (For Setting Up PostScript3 Printer Driver) Software

Model No. **DP-C262/C322**



WORKIO™

Before using this software, please read these instructions completely and keep these operating instructions for future reference.

English

General
Description

System Requirements

Installing Printer for
Windows

Installing Printer for
Macintosh

Installing PS Driver
Security Utility

Installing Job Status
Utility (Windows only)

The following trademarks and registered trademarks are used throughout this manual:

Microsoft, MS-DOS, Windows, Windows NT and Windows Server are either registered trademarks or trademarks of Microsoft Corporation in the USA and other countries. i386, i486, Celeron, Intel Centrino and Pentium are trademarks of Intel Corporation. The USB-IF Logos are trademarks of Universal Serial Bus Implementers Forum, Inc. TrueType is a registered trademark of Apple Computer, Inc. Novell, NetWare, IntranetWare, NDS are registered trademarks of Novell, Inc. in the USA and other countries.

PEERLESSPage™ is a trademark of the PEERLESS Systems Corporation; and, PEERLESSPrint and Memory Reduction Technology® are registered trademarks PEERLESS Systems Corporation; and, COPYRIGHT © 2005 PEERLESS Systems Corporation. COPYRIGHT © 2005 Adobe Systems Incorporated. All Rights Reserved; and Adobe® PostScript® 3™

Universal Font Scaling Technology (UFST) and all typefaces have been licensed from Agfa Monotype.

Agfa® and the Agfa rhombus are registered trademarks of Agfa-Gevaert N.V. registered in the U.S. Patent and Trademark Office and may be registered in other jurisdictions. Monotype® is a registered trademark of AMT registered in the U.S. Patent and Trademark Office and may be registered in other jurisdictions.

ColorTune® is a registered trademark of Agfa-Gevaert N.V. registered in the U.S. Patent and Trademark Office and may be registered in other jurisdictions. Profile Tool Kit™, Profile Studio™ and Profile Optimizer™ are trademarks of AMT and may be registered in certain jurisdictions. PCL is a trademark of Hewlett-Packard Company.

Adobe, Acrobat, Adobe Reader, Adobe Type Manager, PostScript, PostScript 3 and Reader are either registered trademarks or trademarks of Adobe Systems Incorporated in the United States and/or other countries.

All other product/brand names, trademarks or registered trademarks identified herein are the property of their respective owners.

© 2005 Panasonic Communications Co., Ltd. All Rights Reserved.
Unauthorized copying and distribution is a violation of law.
Published in Japan.

The contents of these Operating Instructions are subject to change without notice.

Table of Contents

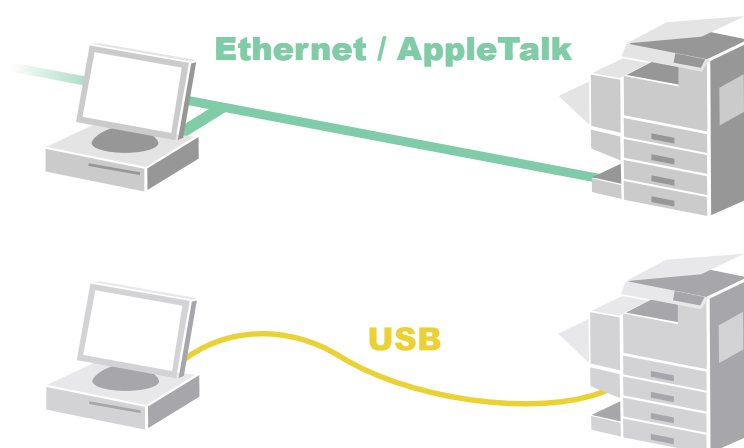
General Description	4
System Requirements	6
Installing Printer for Windows	8
■ Installing Printer Driver	8
■ Installing Network Printer	13
■ Installing USB Printer	19
Installing Printer for Macintosh	29
■ Connecting with a Cable (USB/AppleTalk).....	29
■ Installing the Printer Driver for OS 8.6/9.x.....	30
■ Installing the Printer Driver for OS X	35
Installing PS Driver Security Utility	39
■ General Description.....	39
■ Installing PS Driver Security Utility for Windows	40
■ Installing PS Driver Security Utility for Macintosh	42
Installing Job Status Utility (Windows only)	44
■ General Description.....	44
■ Installing Job Status Utility for Windows.....	45

General Description

The PostScript (PS) Printer Driver is required to send Adobe® PostScript® 3™ print data from a PC to your machine.

The properties window of the PS Printer Driver can be used to specify print settings, such as the print orientation and page size. The PS Printer Driver also provides a range of easy-to-use layout functions that allow you to setup printing to suit your requirements.

- The PS Printer Driver is the base software required to send print data to your machine as a network printer or local printer.



- Network Printer Port adds a new port to your Windows PC in accordance with the type of network (LPR, IPP, or Raw mode) that you are using. Once you have installed the Network Printer Port on your Windows PC, setting up your network printer is easy.

**NOTE**

The DP-C262/C322 supports both the Printer Control Language (PCL), and PostScript (PS) printing. The PCL Printer Driver is required if using as a PCL printer.

Memo

System Requirements

- Personal Computer : IBM PC/AT and compatibles (CPU Pentium II or greater is required, Pentium 4 or greater is recommended)
Apple Macintosh computer (PowerPC G3 or greater is required, G4 or greater is recommended)
- Operating System : Windows 98^{*1}, Windows Me^{*2}, Windows NT 4.0^{*3} (With Service Pack 3 or later is required), Windows 2000^{*4}, Windows XP^{*5}, Windows Server 2003^{*6}
Macintosh OS 8.6/9.x^{*7}, Macintosh OS X 10.x^{*8}
- System Memory : The minimum recommended Memory for each OS is as follows:
- | | |
|---|---------------------|
| Windows 98, Windows Me | : 128 MB or greater |
| Windows 2000, Windows XP,
Windows NT 4.0, Windows
Server 2003 | : 256 MB or greater |
| Macintosh OS 8.6/9.x | : 128 MB or greater |
| Macintosh OS X 10.x | : 128 MB or greater |
- Interface : 10Base-T/100Base-TX Ethernet Port/USB Port.
- Free Disk Space : 40 MB or greater
- CD-ROM Drive : Used for installing the software and utilities from the CD-ROM.

*1 Microsoft® Windows® 98 operating system (hereafter Windows 98)

*2 Microsoft® Windows® Millennium Edition operating system (hereafter Windows Me)

*3 Microsoft® Windows NT® operating system Version 4.0 (hereafter Windows NT 4.0)

*4 Microsoft® Windows® 2000 operating system (hereafter Windows 2000)

*5 Microsoft® Windows® XP operating system (hereafter Windows XP)

*6 Microsoft® Windows Server™ 2003 operating system (hereafter Windows Server 2003)

*7 Apple Macintosh OS 8.6/9.x

*8 Apple Macintosh OS X

Memo

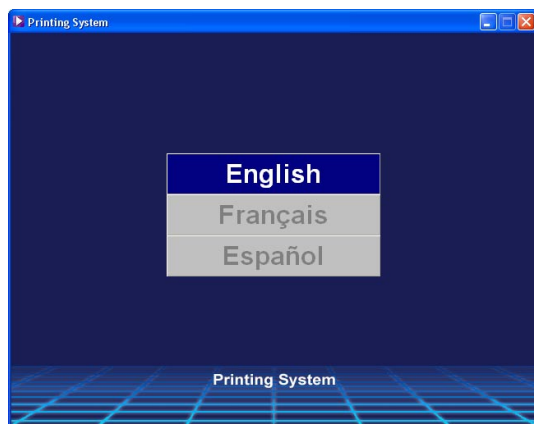
Installing Printer Driver

Note:

- If the Panasonic printer is connected to the PC via the USB port, the PC detects the Panasonic printer automatically and starts the Hardware Wizard to install the printer driver. Accordingly, the following procedure is not required if the Panasonic printer is connected to the PC via the USB port. Instead, please read "Installing USB Printer" (page 19).
- When installing on Windows NT 4.0 and Windows 2000/XP/Windows Server 2003, logon to the computer/network using an account with administrator rights.

1 Exit from all applications, then insert the **Panasonic Printing System CD** into the CD-ROM drive.

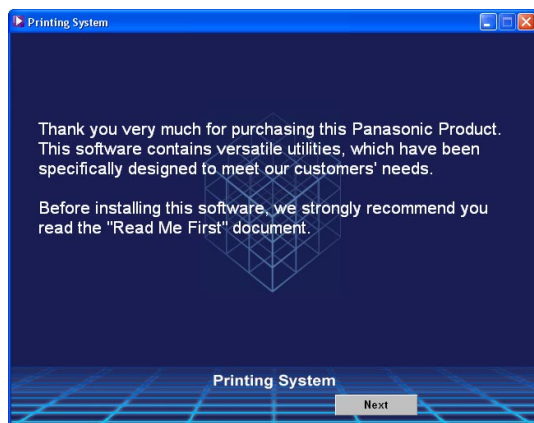
2 Select the desired language.



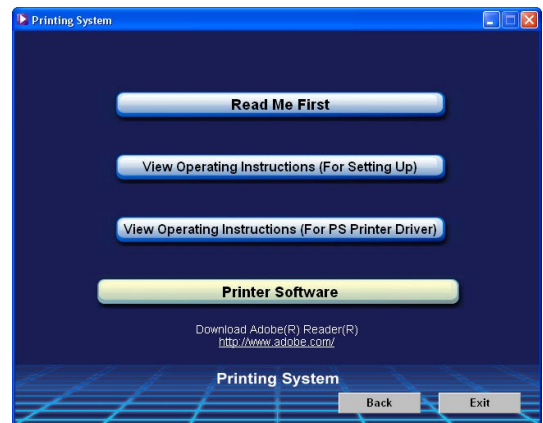
Note:

- If the CD-ROM does not launch automatically, double click the **My Computer** icon on the **Desktop** or on the **Start** menu, then double click the CD-ROM icon.
- The language screen differ depending on the models.

3 The setup screen will appear.
Click the **Next** button.



4 Click **Printer Software**.



5 Click **Install Adobe PostScript Printer Driver**.



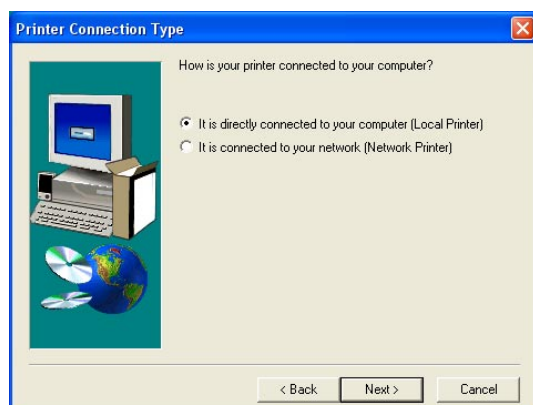
- 6 The setup wizard will start.
Click the **Next >** button.



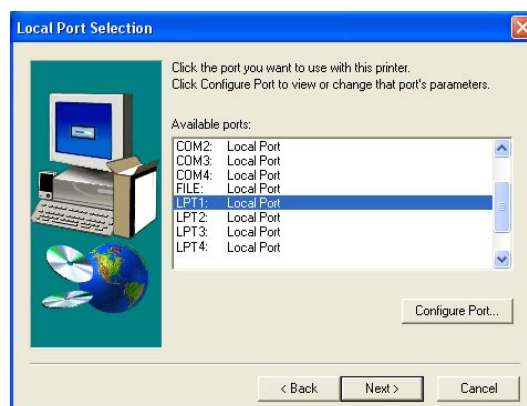
- 7 Read the End User License Agreement, then click the **ACCEPT** button.



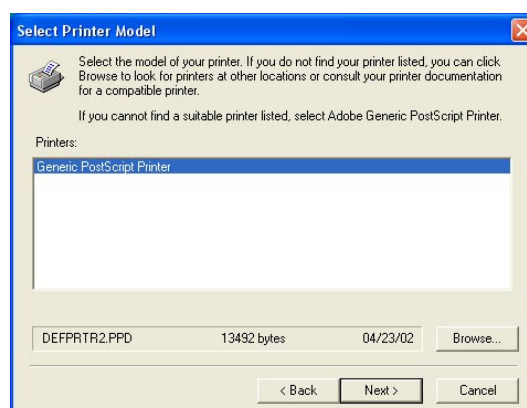
- 8 Select **Local Printer**, then click the **Next >** button.



- 9 Select a printer port, normally **LPT1** for local printers.
Click the **Next >** button.



- 10 The **Select Printer Model** window appears.
Click the **Browse...** button.



Note:
A screen will appear with *Generic PostScript Printer* highlighted. Do not select this printer.

- 11** The **Browse for Printer** window appears.
Select the folder directory in the CD-ROM where the PPD files are stored.

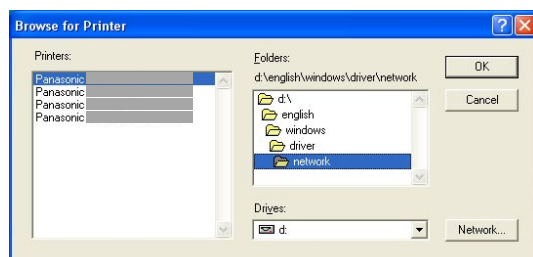
For Windows 98/Me : Select **english > windows > driver > network** folder.

For Windows NT/2000/XP : Select **english > windows > driver > network** folder.

For Windows Server 2003 : Select **english > windows > driver > network** folder.

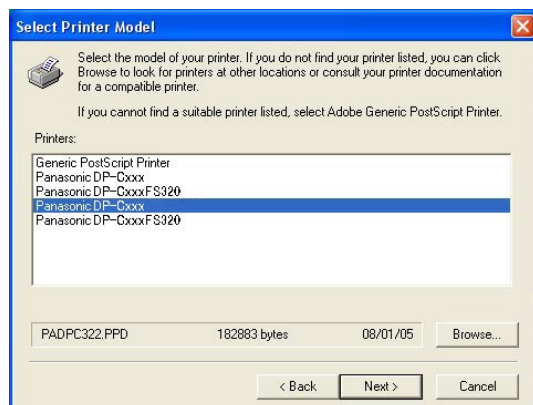
The printer models are also displayed.

Click the button.



- 12** Choose your machine's model and click the button.

- Panasonic DP-Cxxx :
Machine without a Finisher Option OR with the 1 Bin Saddle-Stitch Finisher(DA-FS325)
- Panasonic DP-Cxxx + FS320 : Machine with the 1 Bin Finisher(DA-FS320)



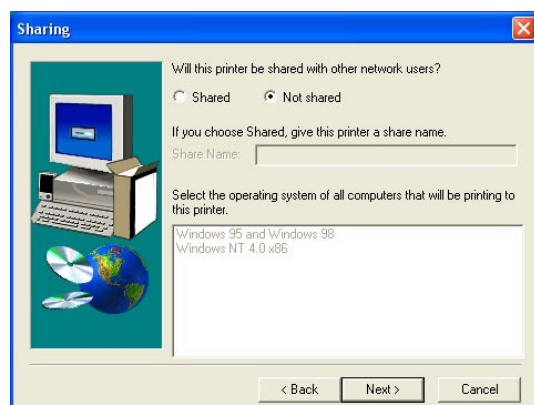
13 Specify whether the printer will be shared with other network users.

Click **Shared** and enter a shared name, or click **Not shared**.

Click the **Next >** button.

Note:

*This window does not appear in **Windows 98/Windows Me**. Sharing information is specified during **Network Settings**.*



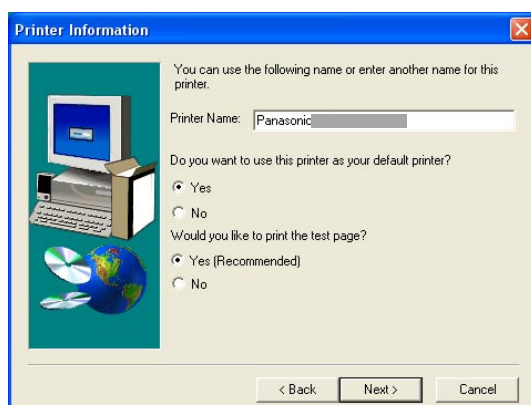
14 Printer Information window appears.

You can accept the default printer name shown or change it as you wish.

Select **Yes**, if you want to use this printer as your default Windows printer.

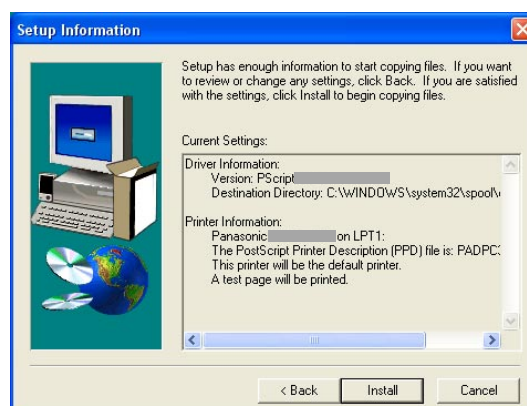
Select **Yes**, if you would like to print a test page.

Click the **Next >** button.



15 Verify the settings in the **Setup Information** window.

Click the **Install** button.



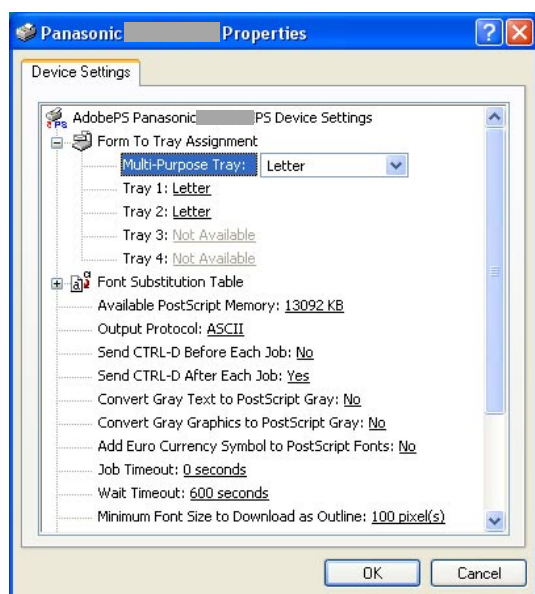
16 The **Printer Configuration** window appears. Select **Yes**, to configure your printer now.

Click the **Next >** button.



- 17** Configure the necessary printer properties in the Device Settings (For detailed information, please refer to the Operating Instructions (For PostScript3 Printer Driver)),

Click the button to return to the setup wizard.



(This screen is for Windows XP)

- 18** Select **Yes**, if you want to view the **ReadMe** file.
Click the button.

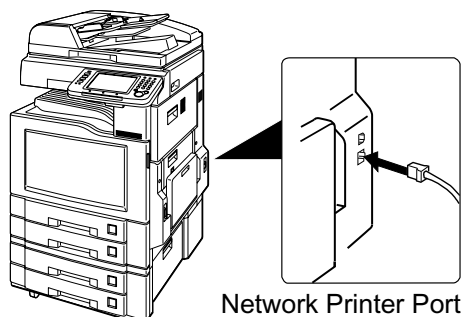


The Panasonic PostScript Printer Driver has been installed, and the Panasonic Printer icon has been created in the Printers folder.

Installing Network Printer

Network Printer Port adds a new port to your Windows PC in accordance with the type of network (LPR, IPP, or Raw mode) that you are using. Once you have installed Network Printer Port on your Windows PC, setting up your network printer is easy.

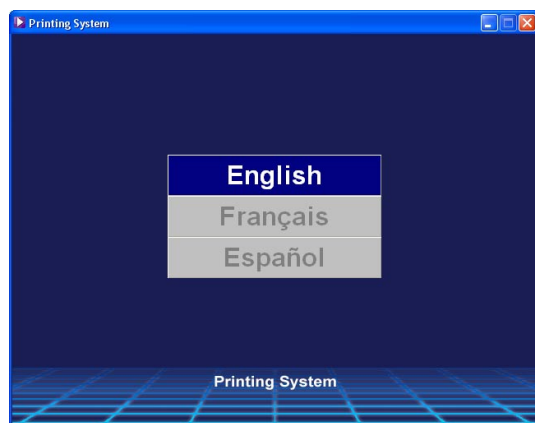
■ Installing Network Printer Port



Note:

When installing on Windows NT 4.0 and Windows 2000/XP/Windows Server 2003, logon to the computer/network using an account with administrator rights.

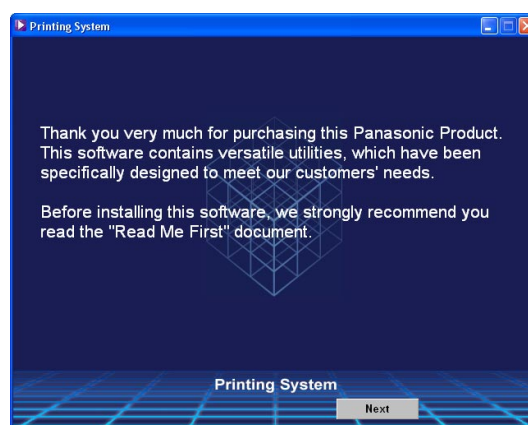
- 1 Exit from all applications, then insert the **Panasonic Printing System CD** into the CD-ROM drive.
- 2 Select the desired language.



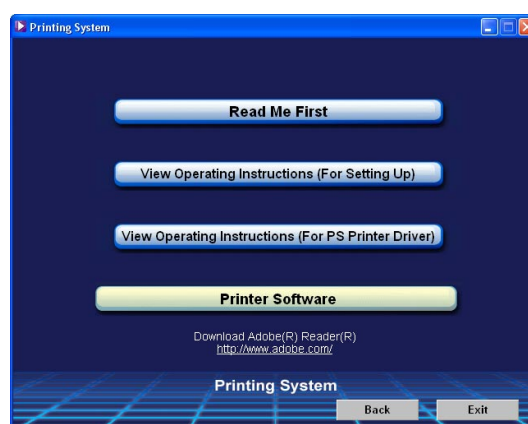
Note:

- If the CD-ROM does not launch automatically, double click the **My Computer** icon on the **Desktop** or on the **Start** menu, then double click the CD-ROM icon.
- The language screen differ depending on the models.

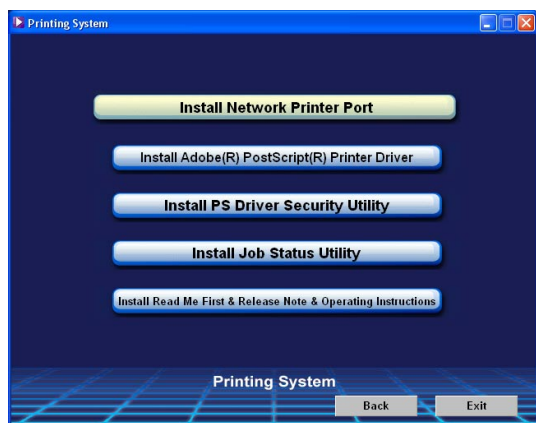
- 3 The setup screen will appear.
Click the **Next** button.



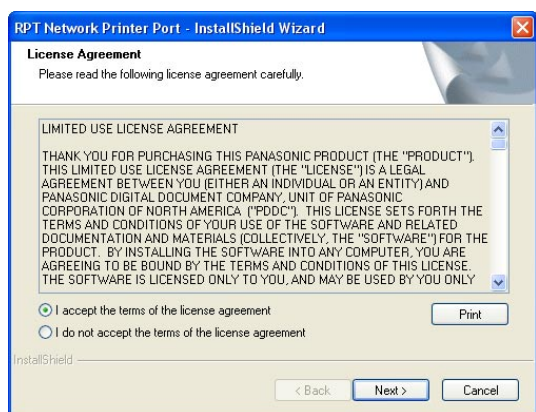
- 4 Click **Printer Software**.



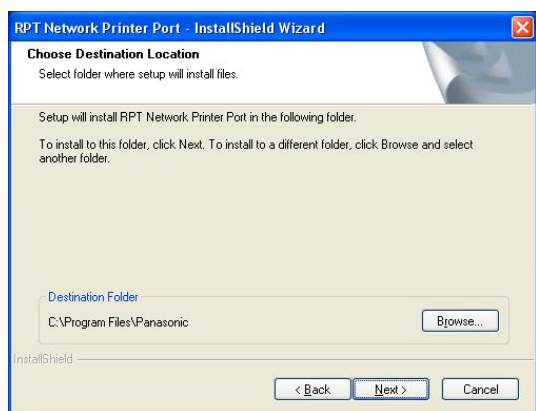
5 Click **Install Network Printer Port**.



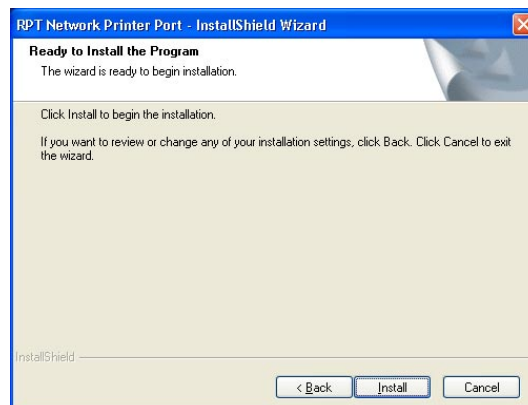
6 The setup wizard will start. Read License Agreement, then select I **accept...** and click the **Next >** button.



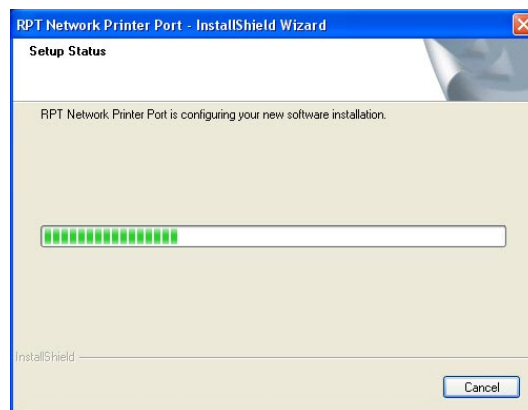
7 Click the **Next** button.



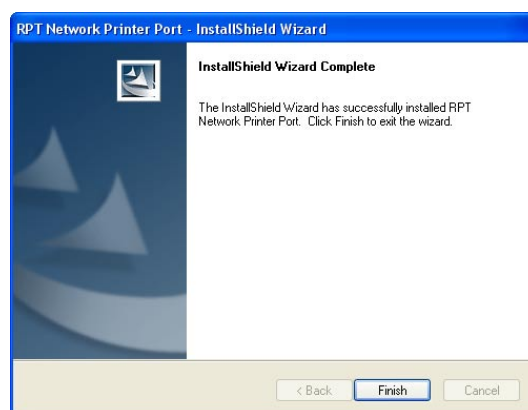
8 Click the **Install** button to begin the installation.



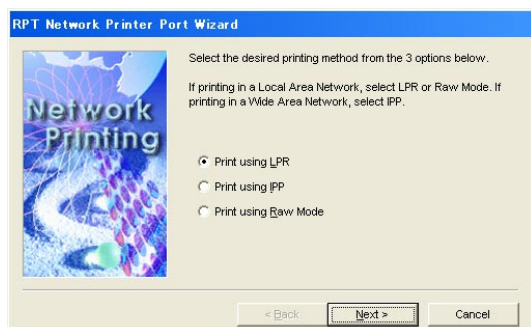
9 A progress bar indicates that the Network Printer Port is being installed.



10 Click the **Finish** button.



11 The port setup window appears.



Select one of the following three types of network printer port and enter the associated settings.

Print using LPR: Adds a Line Printer Remote port. Click the **Next >** button and then enter the IP Address or Host Name, and Network Printer Port Name.

Print using IPP: Adds a Internet Printing Protocol port. Click the **Next >** button, specify how to connect to the network and then enter the Printer URL, Proxy Server Address, and other settings.

Raw Mode: Adds a network printer port in raw mode. Click the **Next >** button and then enter the IP Address or Host Name and Network Printer Port Name.

12 The new network printer port is added to the Windows PC. See the following for details of the procedure for assigning the printer to the new port.

Windows 98/Me : see page 16

Windows NT 4.0 : see page 17

Windows 2000/XP/Windows Server 2003 : see page 18

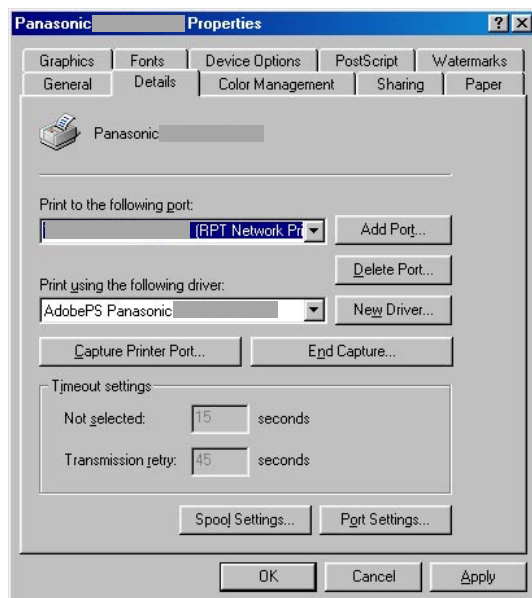
Installing Network Printer

■ Assigning Network Printer Port (Windows 98/Me)

Note:

You must install the printer driver before you can assign the printer to the new port. See "Installing Printer Driver" (page 19) for details.

- 1 Click the **Start** button, select **Settings**, and then click **Printers**.
- 2 Right-click the Panasonic PS printer icon in the **Printers** folder, and select **Properties** in the popup menu. The printer properties dialog box appears.
- 3 Select **Details** tab.
- 4 Select the desired network printer port on **Print to the following port** menu.



Note:

You can add a new network printer port to the PC by clicking the **Add Port...** button and selecting **RPT Network Printer Port** in the **Printer Port** window.

- 5 Click the **OK** button.

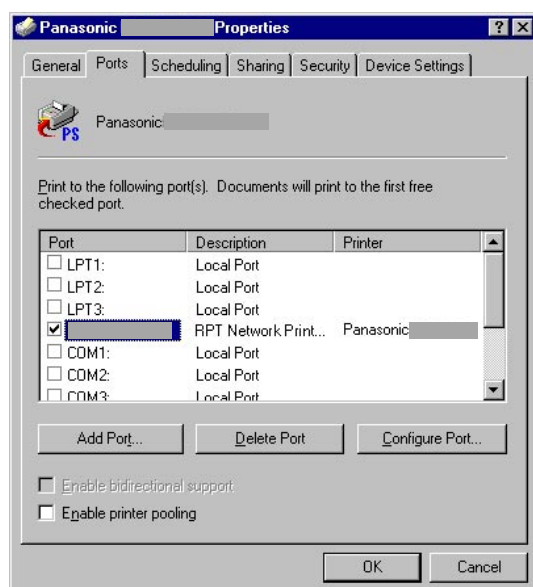
Installing Network Printer

■ Assigning Network Printer Port (Windows NT 4.0)

Note:

You must install the printer driver before you can assign the printer to the new port. See "Installing Printer Driver" (page 19) for details.

- 1 Click the **Start** button, select **Settings**, and then click **Printers**.
- 2 Right-click the Panasonic PS printer icon in the **Printers** folder, and select **Properties** in the popup menu. The printer properties dialog box appears.
- 3 Select **Ports** tab.
- 4 Select the desired network printer port on **Print to the following port(s)** menu.



Note:

You can add a new network printer port to the PC by clicking the **Add Port...** button and selecting **RPT Network Printer Port** in the **Printer Port** window.

- 5 Click the **OK** button.

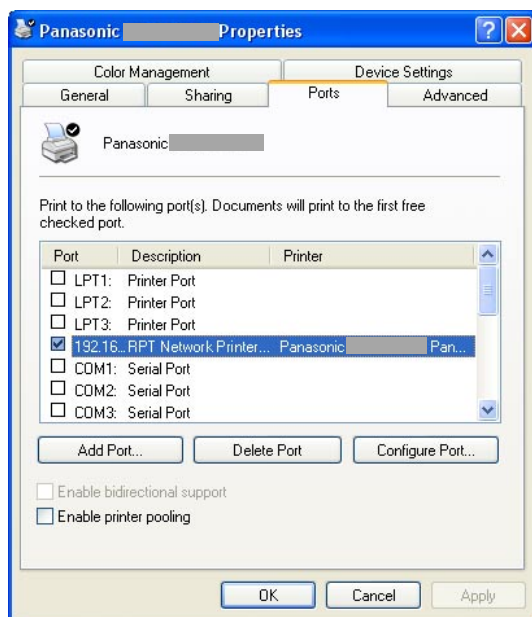
Installing Network Printer

■ Assigning Network Printer Port (Windows 2000/XP/Windows Server 2003)

Note:

You must install the printer driver before you can assign the printer to the new port. See "Installing Printer Driver" (page 19) for details.

- 1 Click the **Start** button, select **Settings**, and then click **Printers and Faxes**.
- 2 Right-click the Panasonic PS printer icon in the **Printers and Faxes** folder, and select **Properties** in the popup menu.
The printer properties dialog box appears.
- 3 Select **Ports** tab.
- 4 Select the desired network printer port on **Print to the following port(s)** menu.



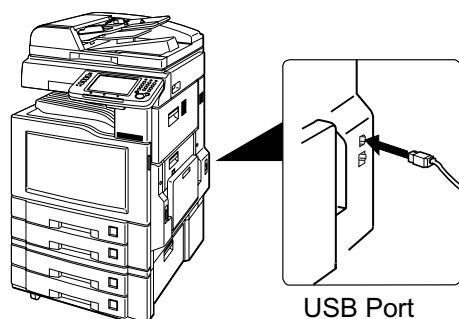
Note:

You can add a new network printer port to the PC by clicking the **Add Port...** button and selecting **RPT Network Printer Port** in the **Printer Port** window.

- 5 Click the **OK** button.

Installing USB Printer

Connect the Panasonic printer to the PC using the USB cable and then turn on the printer. The PC detects the USB printer automatically and starts the Hardware Wizard for you to install the printer driver.



See the following for details about how to use the Hardware Wizard to install the printer driver:

Windows 98 : see page 20

Windows Me : see page 23

Windows 2000 : see page 25

Windows XP/Windows Server 2003 : see page 27

Installing USB Printer

■ For Windows 98

- 1 Connect the printer to the PC with a USB cable.
Turn the Power Switch of your machine ON.
- 2 The **New Hardware Found** dialog box appears for a brief moment, followed by the **Add New Hardware Wizard** dialog box.
Click the **Next >** button.



- 3 Select **Search for the best driver for your device**.
Click the **Next >** button.



- 4 Insert the CD-ROM included with the Option.

- 5 Select **Specify a location** and type **D:\English\Windows\Driver\USB\Win9x** (where "D:" is your CD-ROM drive).
Click the **Next >** button.



- 6 Click the **Next >** button.



- 7 Click the **Finish** button.



- 8** The **New Hardware Found** dialog box appears for a brief moment, followed by the **Add New Hardware Wizard** dialog box.

Click the **Next >** button.



- 9** Select **Search for the best driver for your device**.

Click the **Next >** button.



- 10** Select **Specify a location** and type **D:\English\Windows\Driver\USB\Win9x** (where "D:" is your CD-ROM drive).

Click the **Next >** button.

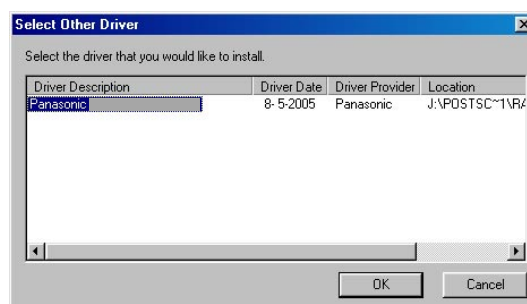


- 11** Select the appropriate device type, Click the **Next >** button.



Check **One of the other drivers**. and click the **View List...** to select the other device name.

- Panasonic DP-Cxxx :
Machine without a Finisher Option OR with the 1 Bin Saddle-Stitch Finisher(DA-FS325)
- Panasonic DP-Cxxx + FS320 :
Machine with the 1 Bin Finisher(DA-FS320)

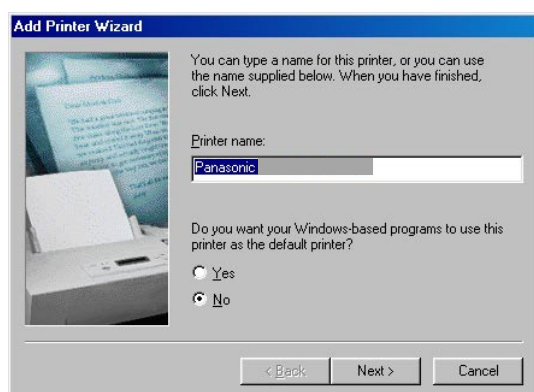


12 Click the **Next >** button.

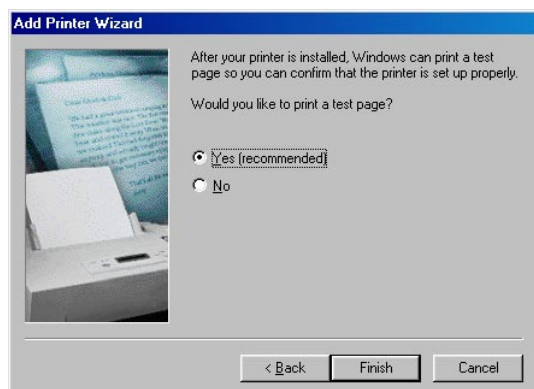


13 Enter the Printer name and click the **Next >** button.

(Check Yes to make the printer as the default printer for your computer.)



14 Click the **Finish** button.



15 Click the **Finish** button.



Installing USB Printer

■ For Windows Me

- 1 Connect the printer to the PC with a USB cable.
Turn the Power Switch of your machine ON.
- 2 The **New Hardware Found** dialog box appears for a brief moment, followed by the **Add New Hardware Wizard** dialog box.
Select **Specify the location of the driver**.
Click the **Next >** button.



- 3 Insert the CD-ROM included with the Option.
- 4 Select **Specify a location** and type **D:\English\Windows\Driver\USB\Win9x** (where "D:" is your CD-ROM drive).
Click the **Next >** button.



- 5 Click the **Next >** button.



- 6 Click the **Finish** button.



- 7 The **New Hardware Found** dialog box appears for a brief moment, followed by the **Add New Hardware Wizard** dialog box.

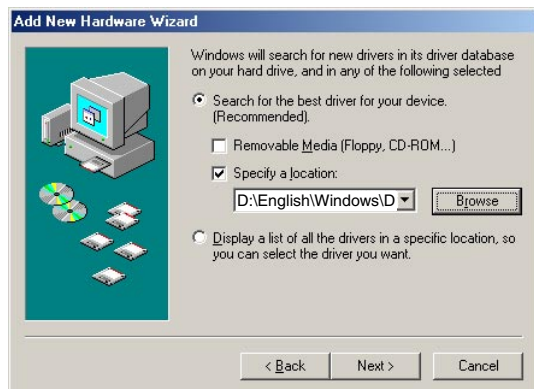
Select **Specify the location of the driver**.

Click the **Next >** button.



- 8 Select **Specify a location** and type **D:\English\Windows\Driver\USB\Win9x** (where "D:" is your CD-ROM drive).

Click the **Next >** button.

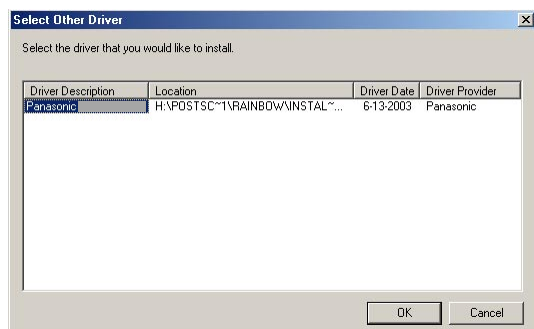


- 9 Select the appropriate software, and click the **Next >** button.



Check **One of the other drivers**. and click the **View List...** to select the other device name.

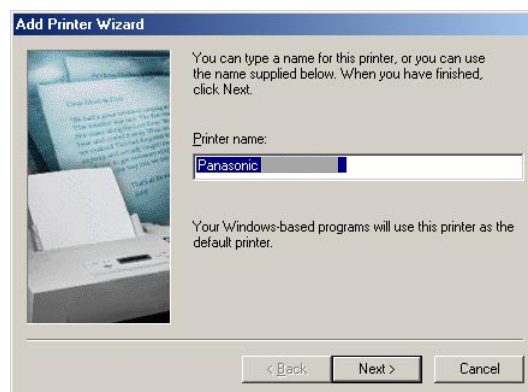
- Panasonic DP-Cxxx : Machine without a Finisher Option OR with the 1 Bin Saddle-Stitch Finisher(DA-FS325)
- Panasonic DP-Cxxx + FS320 : Machine with the 1 Bin Finisher(DA-FS320)



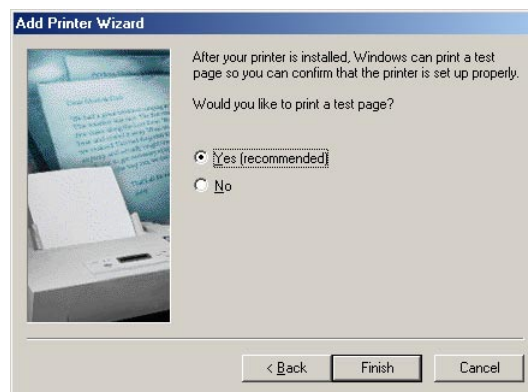
- 10 Click the **Next >** button.



- 11 Enter the Printer name and click the **Next >** button.



- 12 Click the **Finish** button.



- 13 Click the **Finish** button.



Installing USB Printer

■ For Windows 2000

Note:

When installing on Windows 2000, logon to the computer/network using an account with administrator rights.

- 1 Connect the printer to the PC with a USB cable.
Turn the Power Switch of your machine ON.

- 2 The **Found New Hardware Wizard** dialog box appears.

Click the **Next >** button.



- 3 Select **Search for a suitable driver for my device.**

Click the **Next >** button.



- 4 Insert the CD-ROM included with the Option.

- 5 Select **Specify a location.**

Click the **Next >** button.



- 6 Type **D:\English\Windows\Driver\USB\WinXP-2K-2003** (where "D:" is your CD-ROM drive).

Click the **OK** button.

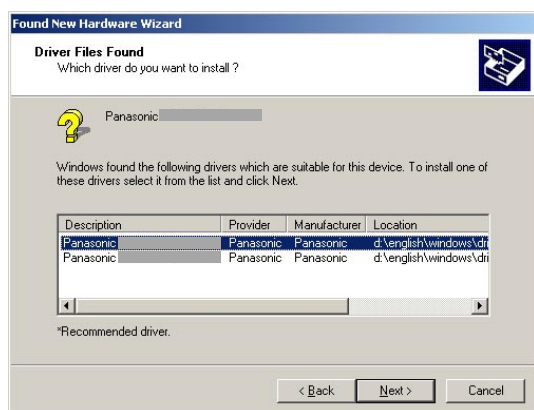


7 Click the **Next >** button.



(Check **Install one of the other driver**, and click the **Next >** to select the other device name.)

- Panasonic DP-Cxxx : Machine without a Finisher Option OR with the 1 Bin Saddle-Stitch Finisher(DA-FS325)
- Panasonic DP-Cxxx + FS320 : Machine with the 1 Bin Finisher(DA-FS320)



8 Click the **Yes** button.



9 Click the **Finish** button.



Installing USB Printer

■ For Windows XP/Windows Server 2003

Note:

When installing on Windows 2000, logon to the computer/network using an account with administrator rights.

- 1 Connect the printer to the PC with a USB cable.
Turn the Power Switch of your machine ON.

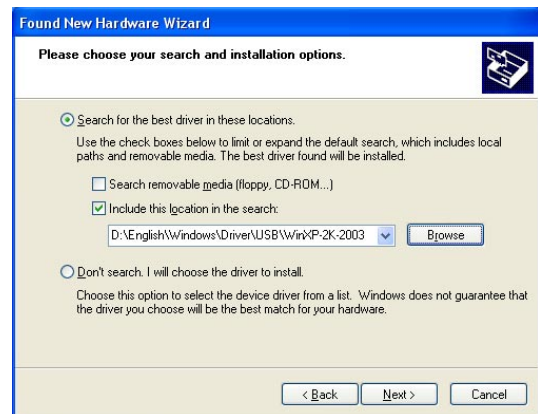
- 2 <Windows XP Service Pack 2>
Select **No, not this time** and click the **Next >** button.



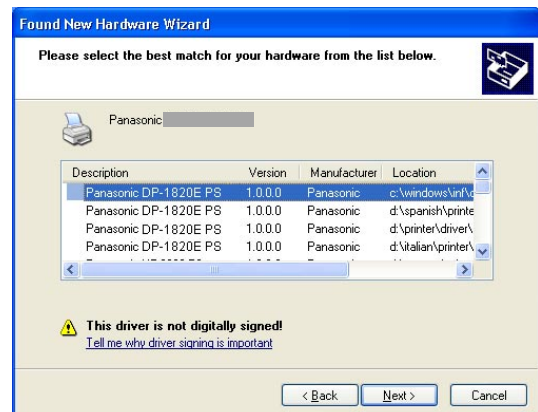
- 3 The **Found New Hardware Wizard** dialog box appears.
Select **Install from a list or specific location (Advanced)**.
Click the **Next >** button.



- 4 Select **Include this location in the search**.
Type **D:\English\Windows\Driver\USB\WinXP-2K-2003** (where "D:" is your CD-ROM drive).
Insert the CD-ROM included with the Option.
Click the **Next >** button.



- 5 This message may appear if you have a previous version of the printer driver installed.
Select the latest version of the *.inf file and click the **Next >** button.
 - Panasonic DP-Cxxx :
Machine without a Finisher Option OR with the 1 Bin Saddle-Stitch Finisher(DA-FS325)
 - Panasonic DP-Cxxx + FS320 :
Machine with the 1 Bin Finisher(DA-FS320)



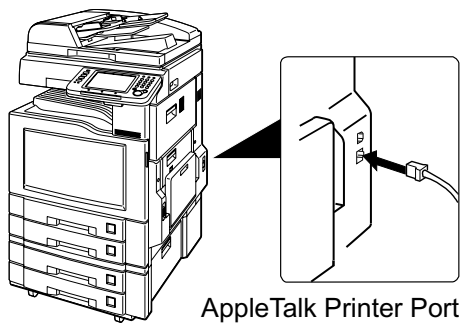
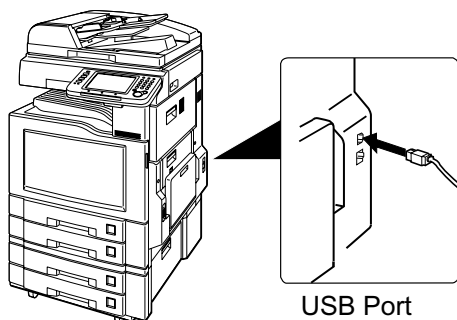
6 Click the button.



7 Click the button.



Connecting with a Cable (USB/AppleTalk)



Installing the Printer Driver for OS 8.6/9.x

■ Installing the AdobePS Printer Driver

The procedure for installing the printer driver on Macintosh OS 8.6/9.x consists of the following three steps.

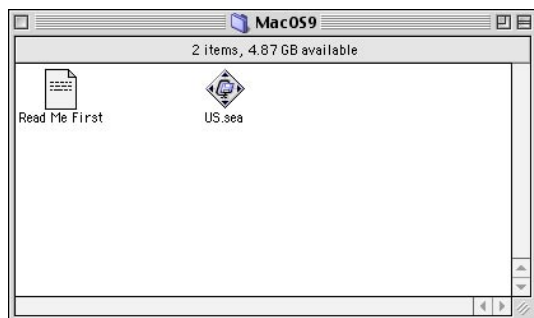
- Install the AdobePS Printer Driver.
- Install the PostScript printer description (PPD) file in the System Folder.
- Assign the installed AdobePS Printer Driver and PPD file to the connected printer to create a Desktop Printer.

Note:

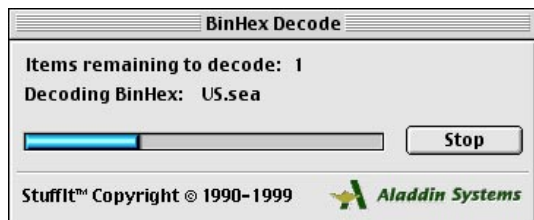
In order to utilize the mailbox function of the Panasonic printer, the user information must be input prior to installing the PS printer driver. The PS Driver Security Utility to change the setting before installing the PS printer driver. For more detail, refer to "Installing PS Driver Security Utility" (see page 39).

Install the AdobePS Printer Driver on the Macintosh.

- 1** Exit from all applications, then insert the **Panasonic Printing System CD** into the CD-ROM drive.
- 2** Double-click the CD icon on the desktop.
Open **English > Macintosh > AdobePostScriptDriver > MacOS9** folder.



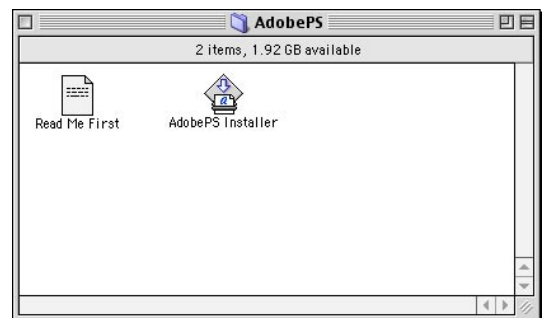
- 3** Copy **US.sea.hqx** into your desktop.
Then double-click the **US.sea.hqx** icon to decompress it.



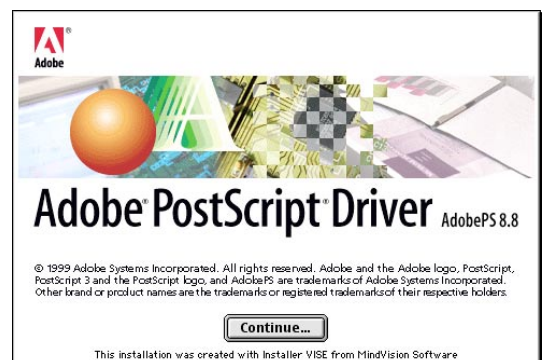
Note:

A ".hqx" ".sit" ".sea" file on a Macintosh, use *Stuffit Deluxe* or *Stuffit Expander* by Aladdin Systems (<http://www.aladdinsys.com/>) to access the file's contents. *Stuffit Expander* is available as a freeware product.

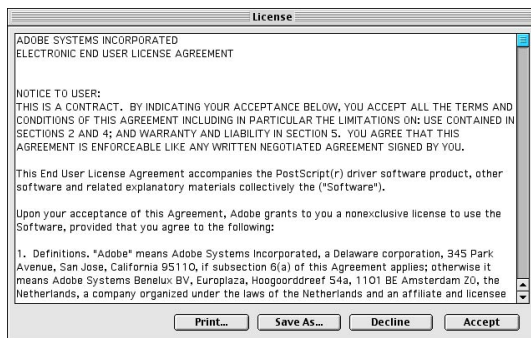
- 4** Open **US > AdobePS** folder, and Double-click the **AdobePS Installer** icon to start the setup.



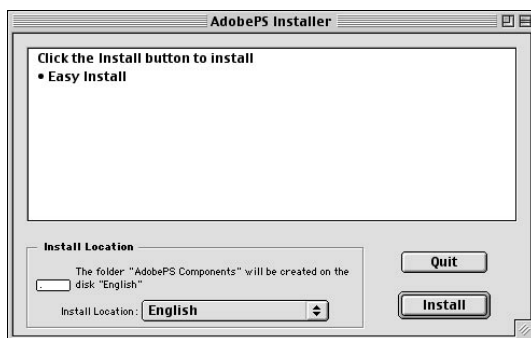
- 5** The setup screen will be displayed.
Click the **Continue...** button.



- 6 Read End User License Agreement, then click the **ACCEPT** button.



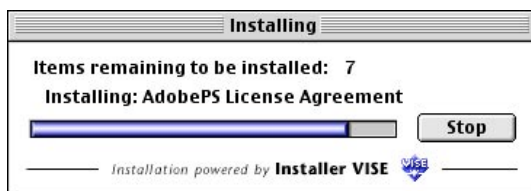
- 7 Verify the installation location.
Click the **Install** button.



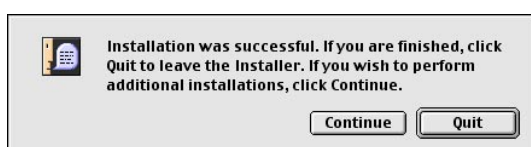
Note:

The printer driver must be installed on the disk with the active System software. If you want to change the location, click on the popup list for an installation location, choose [Select Folder] then choose or create a new folder.

- 8 A progress bar indicates that the printer driver is being installed.



- 9 Click the **Quit** button.

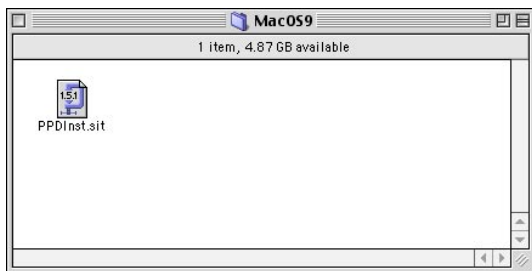


Installing the Printer Driver for OS 8.6/9.x

■ Installing the PPD file into your system

After completing the installation of the AdobePS Printer Driver, install the PostScript printer description (PPD) file into the System Folder as follows:

- 1 Double-click the CD icon on the desktop.
Open **English > Macintosh > Driver > MacOS9** folder.



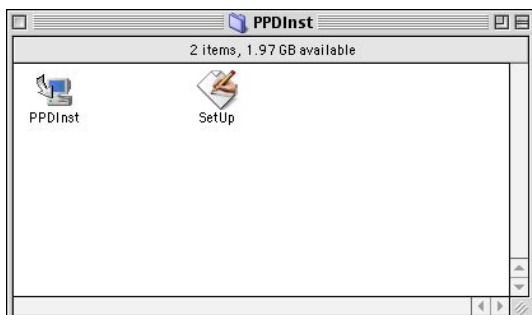
- 2 Copy **PPDInst.sit** into your desktop.
Then double-click the **PPDInst.sit** icon to decompress it.



Note:

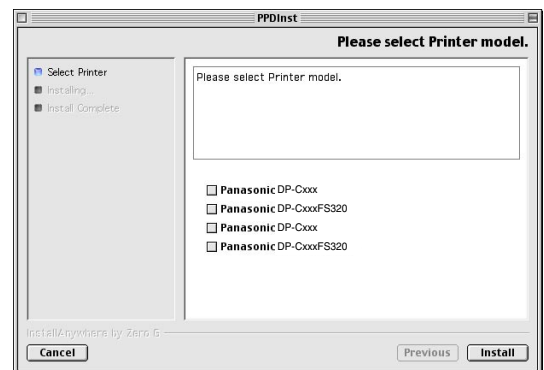
A ".hqx" ".sit" ".sea" file on a Macintosh, use *Stuffit Deluxe* or *Stuffit Expander* by Aladdin Systems (<http://www.aladdinsys.com/>) to access the file's contents. *Stuffit Expander* is available as a freeware product.

- 3 Double-click the **PPDInst** icon to start the setup.

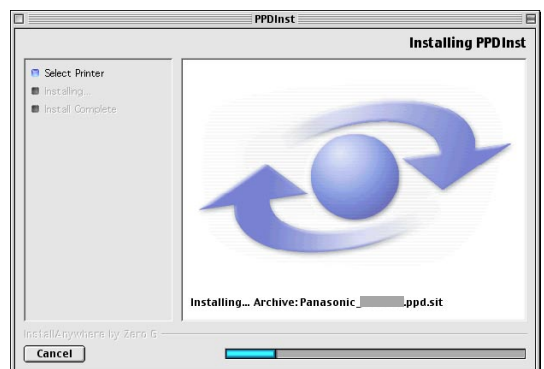


- 4 Select your printer model.
Click the **Install** button.

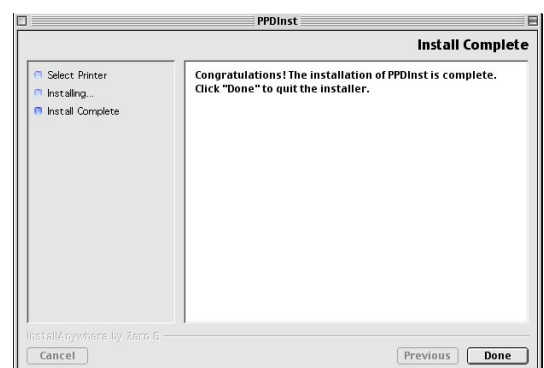
- Panasonic DP-Cxxx :
Machine without a Finisher Option OR with the 1 Bin Saddle-Stitch Finisher(DA-FS325)
- Panasonic DP-Cxxx + FS320 :
Machine with the 1 Bin Finisher(DA-FS320)



- 5 A progress bar indicates that the PPD file is being installed.



- 6 Click the **Done** button.



Installing the Printer Driver for OS 8.6/9.x

■ Creating Desktop Printer

Use the Desktop Printer Utility to assign the installed AdobePS Printer Driver and PPD file to the connected printer and create a Desktop Printer.

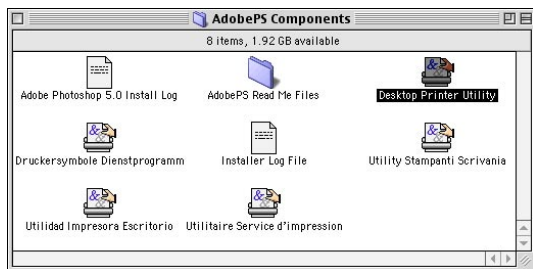
Note:

The following describes how to perform this procedure using the Desktop Printer Utility. However, you can also assign the printer using Chooser from the Apple Menu.

- 1 Open **AdobePS Components** folder in your System folder. Then double-click the **Desktop Printer Utility** icon to start the utility.

Note:

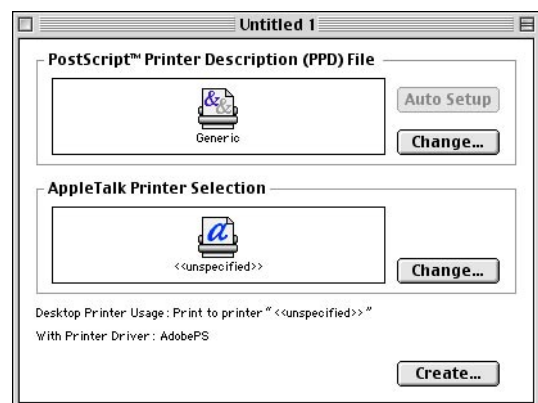
If the **Desktop Printer Utility** is not on the **Adobe PS Components**, follow the steps 1 to 9 on "Installing the AdobePS Printer Driver" (Page 30).



- 2 Select **AdobePS** from **With** menu and select the printer connection method on the **Create Desktop...** menu. (Ex. AppleTalk)
Click the **OK** button.



- 3 Click the **Change...** button on the **AppleTalk Printer Selection**.

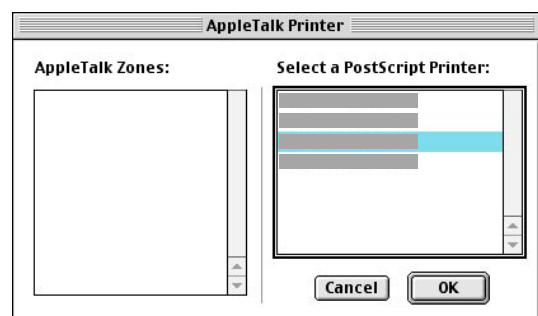


- 4 Select your printer model.
Click the **OK** button.

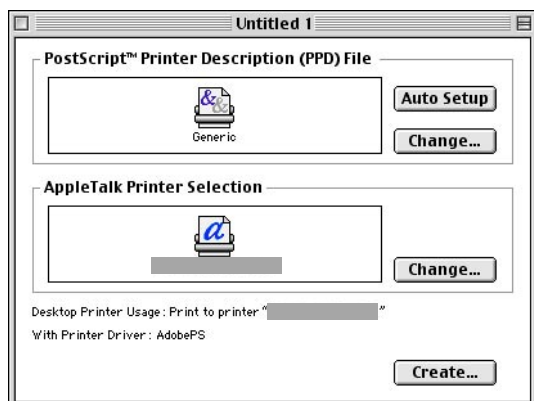
Note:

In the **AppleTalk Printer Selection**, **PostScript** printer names may be displayed with a part of the **MAC Address** (last 6 digits).

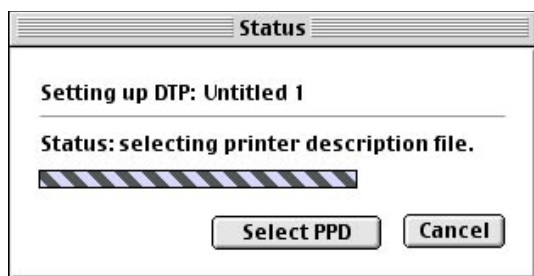
Please verify the **MAC Address** of the **PostScript** Printer (In **General Settings**, No.30 **MAC Address**).



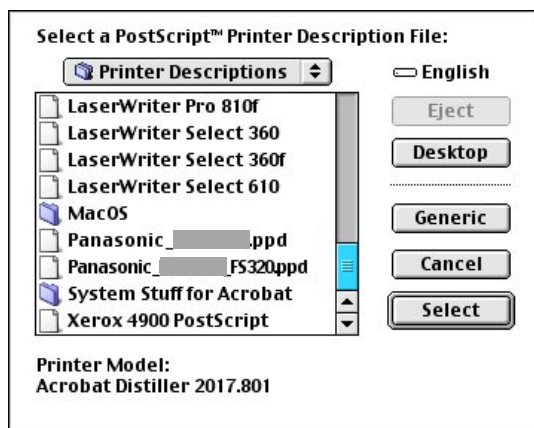
- 5 Click the **Auto Setup** button on the **PostScript Printer Description (PPD) File**.



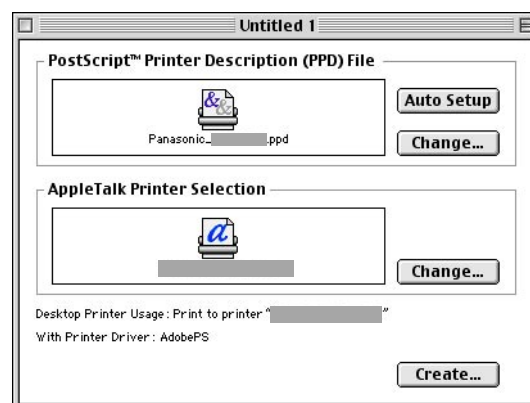
- 6 A status bar indicates that the PPD file is being related.



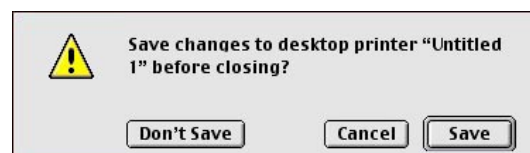
- 7 Select the appropriate PPD file for the PostScript Printer.
- Panasonic DP-Cxxxx :
Machine without a finisher option or with the 1 Bin Saddle-Stitch Finisher (DA-FS325)
 - Panasonic DP-Cxxxx :
Machine with the 1 Bin Finisher (DA-FS320)



- 8 Click the **Create...** button.



- 9 Click the **Save** button.



- 10 Select a destination and click the **Save** button.



- 11 A status bar indicates that the desktop printer is being created.



- 12 The utility creates a new desktop printer icon for your device.



Installing the Printer Driver for OS X

A PostScript printer driver is already provided in Mac OS X. You need to install the PostScript printer description (PPD) file and add the printer into your system for printing.

Note:

In order to utilize the mailbox function of the Panasonic printer, the user information must be input prior to installing the PS printer driver. The PS Driver Security Utility to change the setting before installing the PS printer driver. For more detail, refer to "Installing PS Driver Security Utility" (see page 39).

■ Installing the PPD file into your system

Install the PostScript printer description (PPD) file into your system as follows:

1 Exit from all applications, then insert the **Panasonic Printing System CD** into the CD-ROM drive.

2 Double-click the CD icon on the desktop.

For Mac OS X 10.1 : Open **English > Macintosh > Driver > MacOSX101** folder.

For Mac OS X 10.2, 10.3, 10.4 : Open **English > Macintosh > Driver > MacOSX102-4** folder.



3 Copy **PPDInst.dmg.zip (PPDInst.dmg.sit for Mac OS 10.1)** into your desktop. Then double-click the **PPDInst.dmg.zip (PPDInst.dmg.sit for Mac OS 10.1)** icon to decompress it.



Note:

A ".hqx" ".sit" ".sea" file on a Macintosh, use *Stuffit Deluxe* or *Stuffit Expander* by Aladdin Systems (<http://www.aladdinsys.com/>) to access the file's contents. *Stuffit Expander* is available as a freeware product.

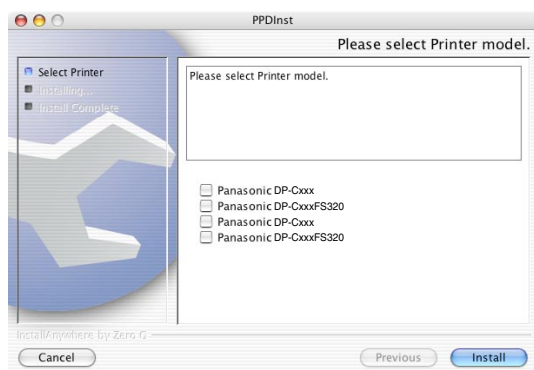
4 Double-click the **PPDInst** icon to start the setup.



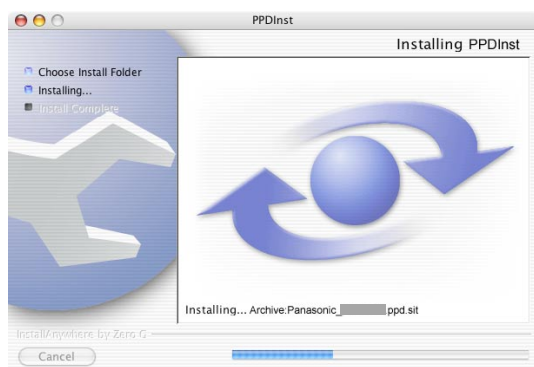
5 Select your printer model.

Click the **Install** button.

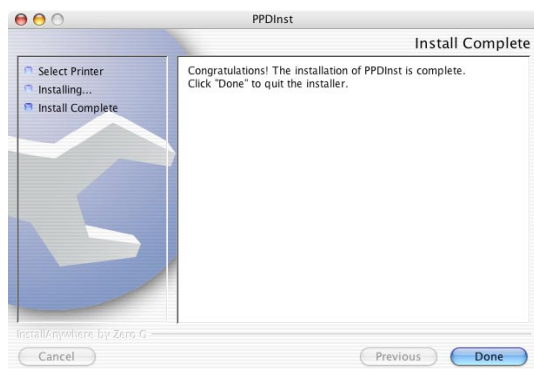
- Panasonic DP-Cxxx :
Machine without a Finisher Option OR with the
1 Bin Saddle-Stitch Finisher(DA-FS325)
- Panasonic DP-Cxxx + FS320 :
Machine with the 1 Bin Finisher(DA-FS320)



6 A progress bar indicates that the PPD file is being installed.



7 Click the **Done** button.

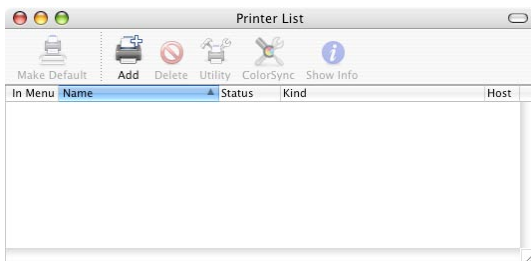


Installing the Printer Driver for OS X

■ Add the printer in the Printer List

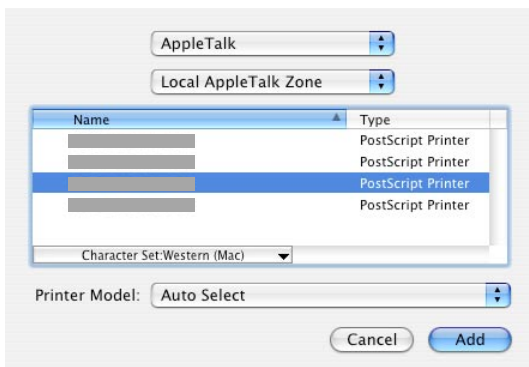
Use the Printer Setup Utility to assign the installed PPD file to the connected printer.

- 1 Open **Printer Setup Utility** from **Startup Disk > Applications > Utilities** and click the **Add** button in the Printer List.

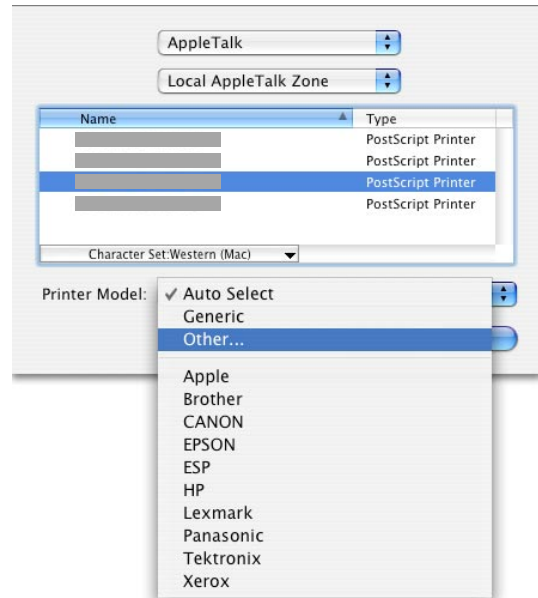


- 2 Select the printer connection method on the top menu. (Ex. AppleTalk)

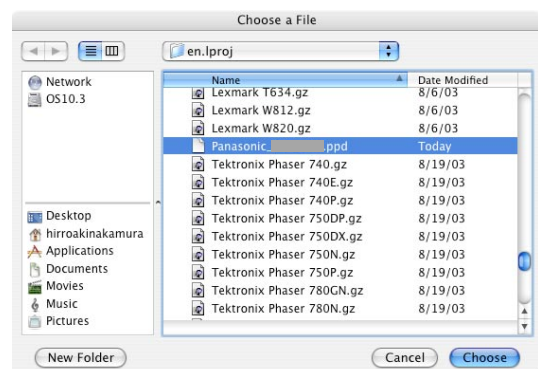
The list of the connected printer is displayed.
Select your printer.



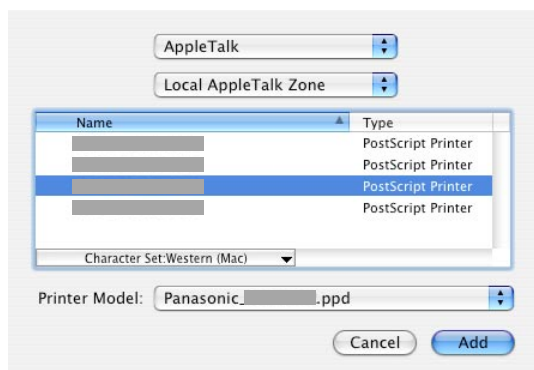
- 3 Select [Other...] from **Printer Model** menu.



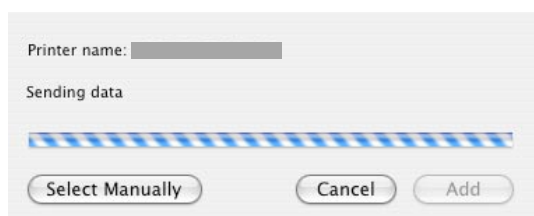
- 4 Select your printer model (PPD file).
Click the **Choose** button.



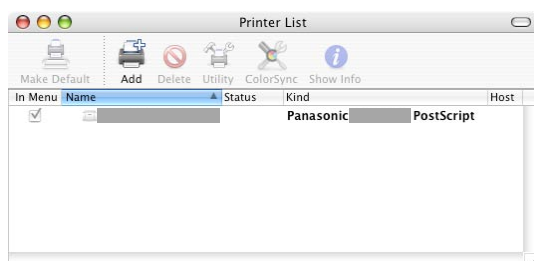
5 Click the **Add** button.



6 A status bar indicates that the printer is being created.



7 The printer is added in the **Printer List**.



General Description

The PS Driver Security Utility adds User ID, Password, and Department Code information to print data that is printed using the PS Driver. This utility allows users to take advantage of the print job statistics, security and other advanced Panasonic printer functions.

- Print data sent to the optional hard disk unit on a Panasonic printer can be printed using the mailbox function. The PS Driver Security Utility can perform printing based on the various Job Types (Check then Print, Mailbox, and Secure Mailbox) using the User ID, Password, and Department Code information.
- Network Accounting Manager can be used to collect statistics and record usage, cost and other information for Panasonic printers.

Refer to the associated Operating Instructions for details of the mailbox function and Network Accounting Manager.

Note:

For Macintosh:

In order to utilize User ID, Password and Department Code, the appropriate information must be input prior to installing the PS printer driver. The PS Driver Security Utility to change the setting before installing the PS printer driver.

- *If you have already installed the PS printer driver, uninstall it, change the setting using the PS Driver Security Utility, then install the PS printer driver.*
- *If you want to change User ID, Password or Department Code after it begins to operate the printer, uninstall the PS printer driver, change the setting using the PS Driver Security Utility, then install the PS printer driver again.*

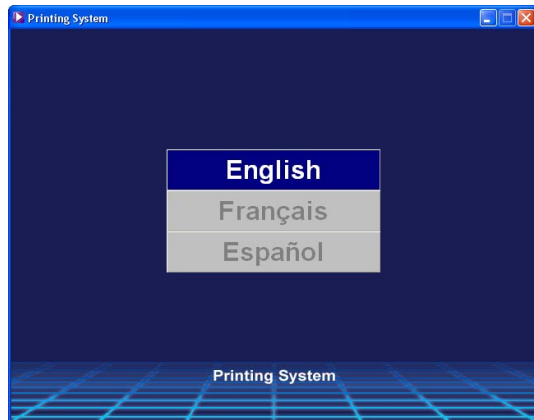
Installing PS Driver Security Utility for Windows

Note:

When installing on Windows NT 4.0 and Windows 2000/XP/Windows Server 2003, logon to the computer/network using an account with administrator rights.

- 1 Exit from all applications, then insert the **Panasonic Printing System CD** into the CD-ROM drive.

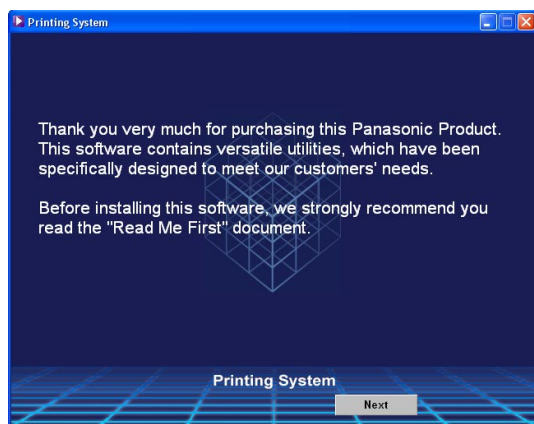
- 2 Select the desired language.



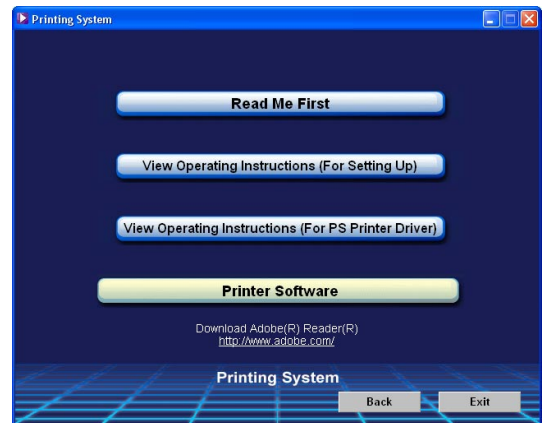
Note:

- If the CD-ROM does not launch automatically, double click the **My Computer** icon on the **Desktop** or on the **Start** menu, then double click the CD-ROM icon.
- The language screen differ depending on the models.

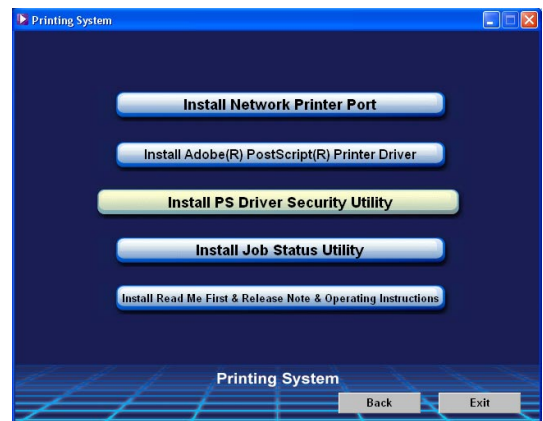
- 3 The setup screen will appear.
Click the button.



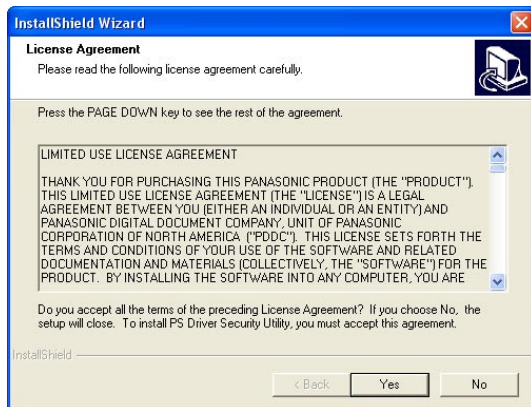
- 4 Click **Printer Software**.



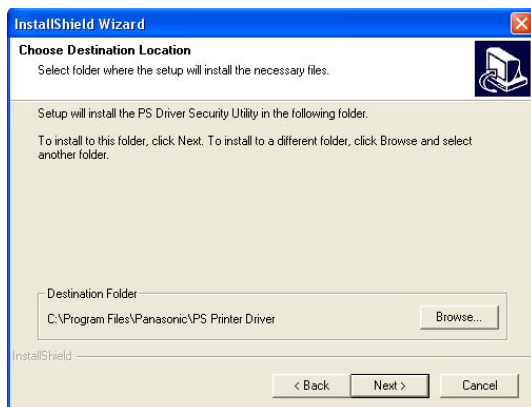
- 5 Click **Install PS Driver Security Utility**.



- 6 The setup wizard will start.
Read License Agreement, then click the button.



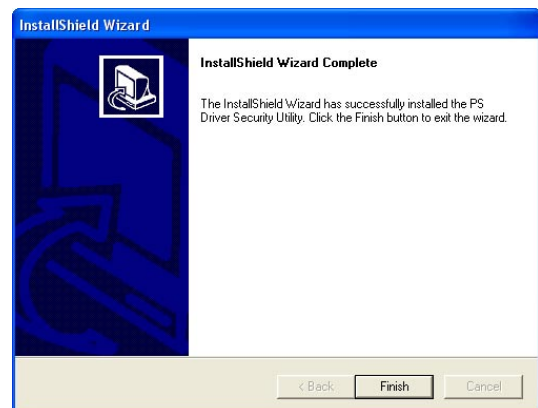
- 7 Verify the installation location.
Click the button.



- 8 Click the button.



- 9 Click the button.



- 10 The PS Driver Security Utility icon is created on your desktop.



Installing PS Driver Security Utility for Macintosh

- 1 Exit from all applications, then insert the **Panasonic Printing System CD** into the CD-ROM drive.
- 2 Double-click the CD icon on the desktop.
For Mac OS 8.6/9.x : Open **English > Macintosh > SecurityUtility > MacOS9** folder.
For Mac OS X 10.1 : Open **English > Macintosh > SecurityUtility > MacOSX101** folder.
For Mac OS X 10.2, 10.3, 10.4 : Open **English > Macintosh > SecurityUtility > MacOSX102-4** folder.



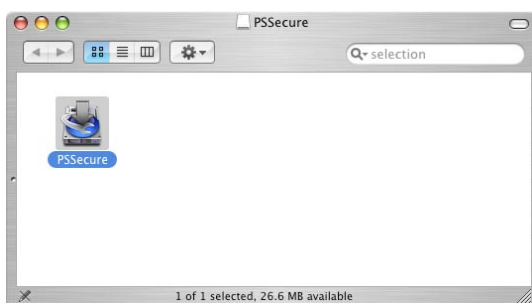
- 3 Copy PPSecure.dmg.zip (PPSecure.dmg.sit for OS 10.1, PS Secure.bin for OS 8.6/9.x) into your desktop. Then double-click the PPSecure.dmg.zip (PPSecure.dmg.sit for OS 10.1, PS Secure.bin for OS 8.6/9.x) icon to decompress it.



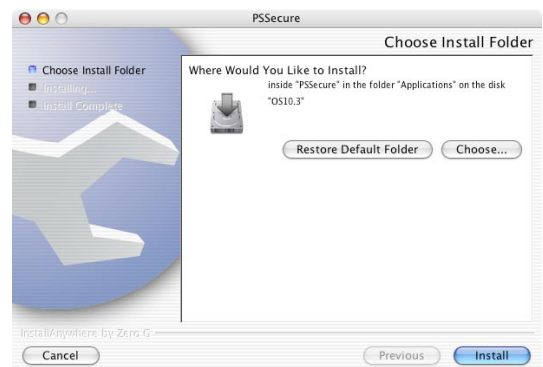
Note:

A ".hqx" ".sit" ".sea" file on a Macintosh, use *Stuffit Deluxe* or *Stuffit Expander* by Aladdin Systems (<http://www.aladdinsys.com/>) to access the file's contents. *Stuffit Expander* is available as a freeware product.

- 4 Double-click the **PPSecure** icon to start the setup.



- 5 Click the **Install** button.



- 6 A progress bar indicates that the PS Driver Security Utility is being installed.



7 Click the **Done** button.



8 The **PS Driver Security Utility** icon is created on your desktop.



Note:

For Mac OS 8.6/9.x, the application is installed under Applications (Mac OS 9) > PS Secure folder by default.

General Description

The Job Status Utility is a utility software that notifies the PC of the status of a print/fax job. This utility is convenient for a network printer, as the print/fax job can be observed from a remote PC.

- A popup Completion Notice will display on your PC screen when the Print job is finished.
- To help you maintain records of the documents you send or print, the Job Status Utility is equipped to list the transaction result as a Log file.

Note:

The Job Status Utility can be used only with the Windows based PC.

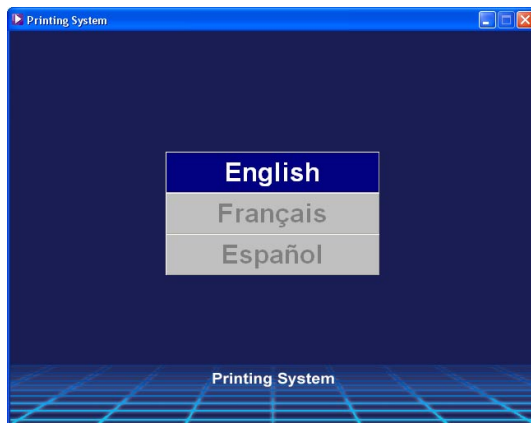
Installing Job Status Utility for Windows

Note:

When installing on Windows NT 4.0 and Windows 2000/XP/Windows Server 2003, logon to the computer/network using an account with administrator rights.

- 1 Exit from all applications, then insert the **Panasonic Printing System CD** into the CD-ROM drive.

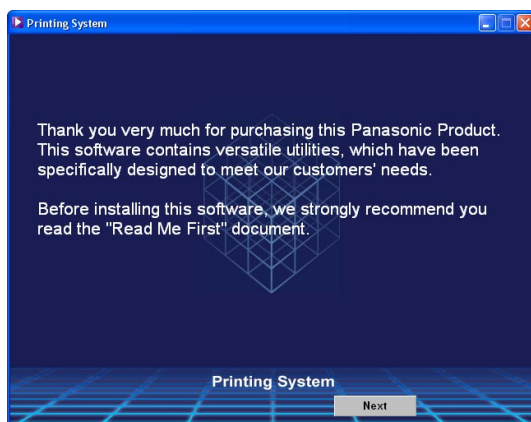
- 2 Select the desired language.



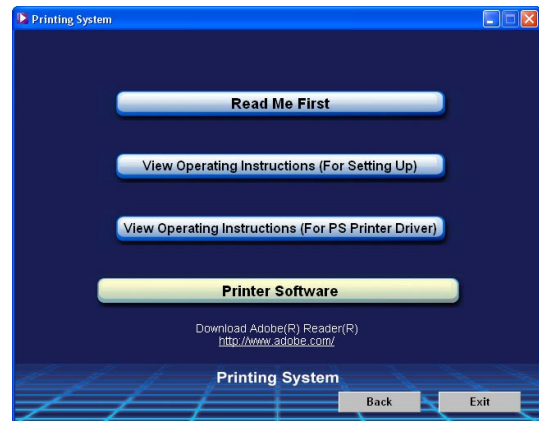
Note:

- If the CD-ROM does not launch automatically, double click the **My Computer** icon on the **Desktop** or on the **Start** menu, then double click the CD-ROM icon.
- The language screen differ depending on the models.

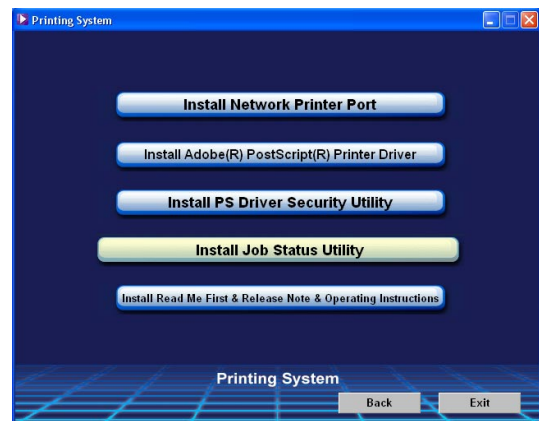
- 3 The setup screen will appear.
Click the **Next** button.



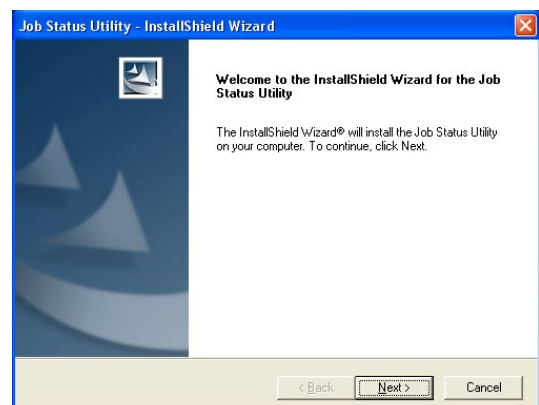
- 4 Click **Printer Software**.



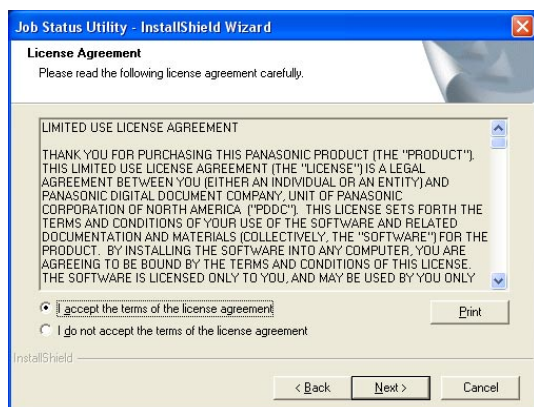
- 5 Click **Install Job Status Utility**.



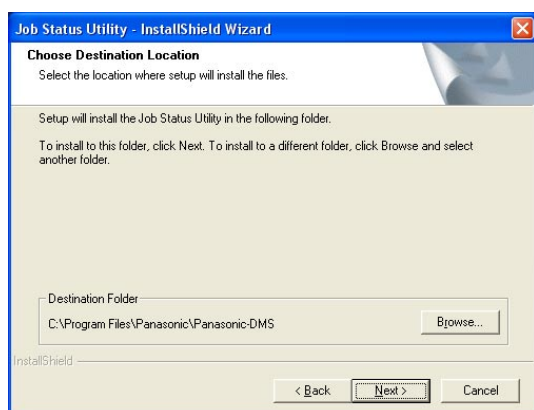
- 6 The setup wizard will start.
Click the **Next >** button.



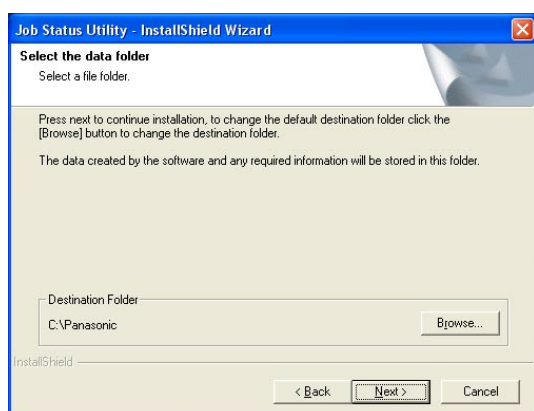
- 7 Read License Agreement, then select I accept... and click the **Next >** button.



- 8 Specify the Location where the Job Status Utility is installed, and click the **Next >** button.

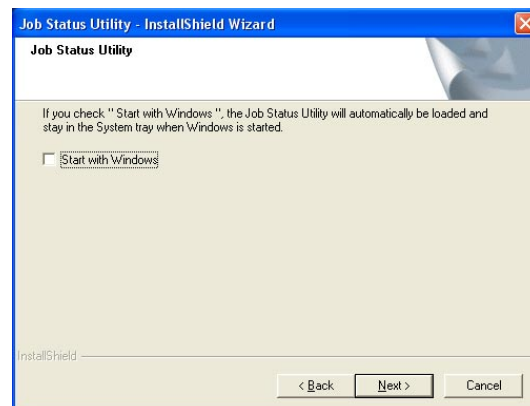


- 9 Specify a data folder for the Job Status Utility, and click the **Next >** button.



- 10 Select whether to make the Job Status Utility reside automatically in the taskbar when Windows is started.

Click the **Next >** button.

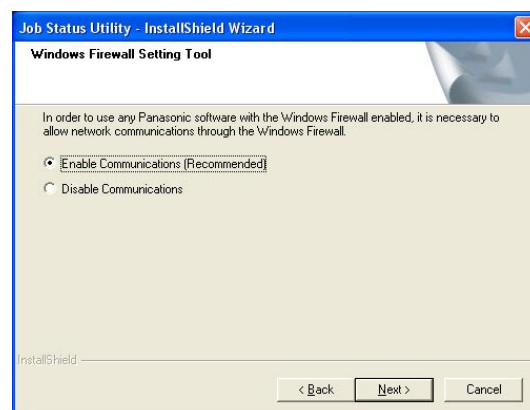


- 11 Select whether the Job Status Utility communicates through firewall of Windows.

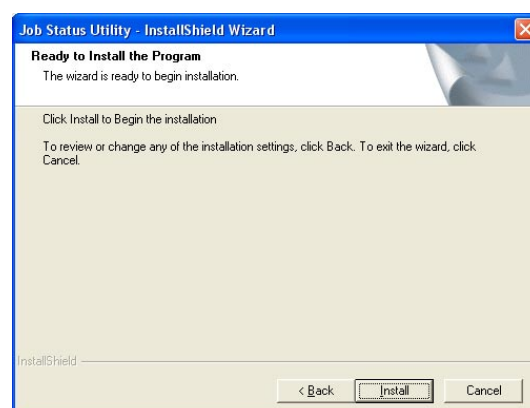
Click the **Next >** button.

Note:

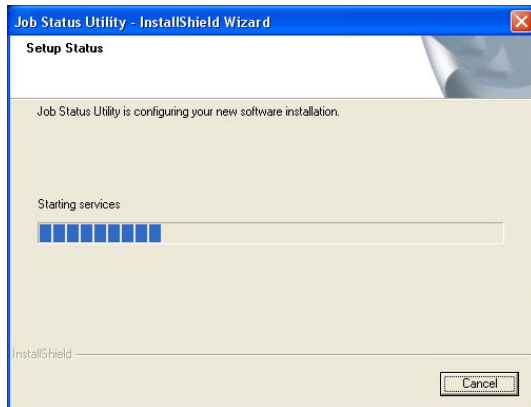
This window will appear in Windows XP, Windows Server 2003 Service Pack 1.



- 12 Click the **Install** button.

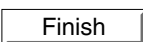


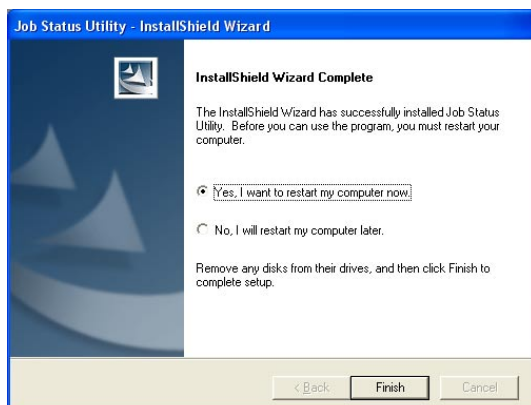
- 13** A progress bar indicates that the Job Status Utility is being installed.



- 14** When the install process is completed, a screen is displayed prompting you to restart your computer.

It is necessary that you restart your computer so that the Job Status Utility can be started.

Click the  button.



USA Only

WARRANTY

PANASONIC DIGITAL DOCUMENT COMPANY MAKES NO WARRANTIES, GUARANTEES OR REPRESENTATIONS, EXPRESSED OR IMPLIED, TO THE CUSTOMER WITH RESPECT TO THIS PANASONIC MACHINE, INCLUDING BUT NOT LIMITED TO, ANY IMPLIED WARRANTY OF MERCHANTABILITY OR FITNESS FOR A PARTICULAR PURPOSE.

PANASONIC DIGITAL DOCUMENT COMPANY ASSUMES NO RISK AND SHALL NOT BE SUBJECT TO LIABILITY FOR ANY DAMAGE, INCLUDING, BUT NOT LIMITED TO DIRECT, INDIRECT, SPECIAL, INCIDENTAL OR CONSEQUENTIAL DAMAGES OR LOSS OF PROFITS SUSTAINED BY THE CUSTOMER IN CONNECTION WITH THE USE OR APPLICATION OF THIS PANASONIC MACHINE. SEE YOUR DEALER FOR DETAILS OF DEALER'S WARRANTY.

For Service, Call: _____

Panasonic Digital Document Company,
Unit of Panasonic Corporation of North America
Two Panasonic Way
Secaucus, New Jersey 07094
<http://panasonic.co.jp/pcc/en/>

Panasonic Canada Inc.
5770 Ambler Drive
Mississauga, Ontario L4W 2T3
<http://www.panasonic.ca>

For Customer Support (Except for
USA and Canada Users):
Panasonic Communications Co., Ltd.
Fukuoka, Japan
<http://www.panasonic.co.jp/global/>

T0905-1115
PJQMC0563ZC
November 2005
Published in Japan