

ifax Mail linking software for TIFF converter

(Version supporting MAPI mailer linking function)

user's guide

- Windows 95/98 English version -

Copyright Panasonic Communications Co., Ltd. 1998 July.

Contents of this manual

Introduction

1. What Internet FAX mail linking program can do.
 2. MAPI (Messaging API)
 3. Operating environment for Internet FAX mail linking program
 4. Installation of Internet FAX mail linking program
 5. How to use Internet FAX mail linking program
-

Introduction

This user's guide is a manual (referred to hereafter as "this manual") for the add-in program "ifax Mailer", software that links the e-mail client for MAPI with the TIFF converter for the Internet FAX.

First, please read carefully the license agreement. This is the license agreement to be agreed between you and Panasonic Communications Co., Ltd., on this manual and the "ifax Mailer" (referred to hereafter as "this software") manufactured by Panasonic Communications Co., Ltd.

Please confirm the conditions described in this license agreement before starting to use this manual and this software.

If you do not agree, please do not use this manual or this software and discard all of this manual and this software, including copies.

This manual, or this software, is subject to change without prior notice.

(Note 1) Windows and Microsoft are registered trademarks of Microsoft Corporation, U.S.A.

1. What an Internet FAX mail linking program can do.

"ifax Mailer" adds the function linking the e-mail client for MAPI to the TIFF converter for the Internet FAX.

To send a printing image as mail from the application to the Internet FAX, you have to convert the file into the format that the Internet FAX is allowed to receive and print as a mail using the TIFF file creation function. You also have to send that file to the Internet FAX as an attached document.

"ifax Mailer" allows you to automatically "create TIFF files" by pressing one button from the TIFF converter for

the Internet FAX. To start the mailer for MAPI, which you always use. You can also open the transmit screen attached with the TIFF file created.

2. MAPI (Messaging API)

MAPI (Microsoft Messaging Application Programming Interface) is the common interface specification for sending and receiving mail with a Windows application. It is also a group of functions attached to Win32 that are used to create, transmit, receive, and save mail. Using the common interface provided by MAPI will allow you to develop applications to send and receive mails without having to depend on a particular message system. If you wish to send data created with a Windows application as e-mail, using MAPI also allows you to send e-mail with attached document directly from the windows application without activating another mail client.

The mail clients supporting MAPI include not only Microsoft products, such as Microsoft Exchange, Microsoft Outlook and Outlook Express, but also Netscape Navigator and EudoraPro.

How to set each client's mail to use it as a MAPI supporting mail client is briefly explained. For details, refer to the user's manual for each mail client.

Microsoft Exchange and Microsoft Outlook are registered as a MAPI client when installed.

For Outlook Express, select "Option" from the "Tool" menu and check both "Use Outlook Express as a standard mail client" and "Use Outlook Express as a simplified MAPI client" on the screen of "General" tab.

For Netscape Navigator, select "Set" from the "Edit" menu, select "mail server" from "Set mail and group" and check "Use Netscape Navigator for application based on MAPI."

For Eudora, select "Option" from the "Tool" menu and select "Always" for "Use of MAPI server" on the "MAPI" screen. Also, to send mails to Internet FAX from Eudora, select "Option" from the "Tool" menu and select "MIME (Base 64)" in "Conversion system for send" on the "Attach" screen.

3. Operating environment for Internet FAX mail linking program

This manual is written about the "ifax mailer" software for Microsoft Windows 95/98 English version.

System Requirements:

- Personal computer with CPU: 80386SX or higher (80486 or higher is recommended)
 - Microsoft Windows 98 English version
 - Microsoft Windows 95 English version
 - Memory: 12 MB or more (Memory of 16 MB or more is recommended.)
 - Disk capacity: 4 MB or more
 - WWW browser for downloading TIFF converter software online.
 - E-mail reader with MIME function for sending mail to Internet FAX using the TIFF file creation function.
-

4. Installation of Internet FAX mail linking program

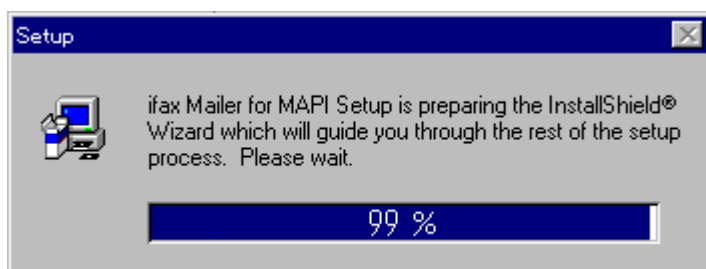
Prior to installation of the Internet FAX mail linking program, the TIFF converter must be installed.

For installation details for the TIFF converter, refer to "Installation of TIFF converter for Internet FAX" in the

"Operator's manual for Internet FAX TIFF converter software (for MAPI mailer linking function) for Windows 95/98 English version".

During TIFF converter installation, the IP address of the Internet FAX on the LAN and the system FD or CD for Windows 95/98 (not required for PCs in which Windows 95/98 is pre-installed) will be required. Check them and keep them at hand.

1. First, install the TIFF converter. The file tf9xxxx.exe is downloaded as a self-extracting archive type file in zip format. Double-click on it, and it is extracted.
2. Click on the "Start" button, point the mouse to "Settings", and click on "Printers" to get the "Printers" window displayed.
3. Double-click on the "Add Printer" icon in the "Printers" window. "Add Printer Wizard" is displayed. Click on the "Next>" button.
4. "How is this printer attached to your computer?" is displayed on the screen to prompt selection of either local printer or network printer. Select "Local printer" and click on the "Next>" button.
5. Though the tables of "Manufacturers:" and "Printers:" are displayed, click on the "Have disk..." button.
6. The "Install From Disk" dialog box is displayed. Either click on the "Browse..." button or directly type in the folder filename where the extracted software has been saved. The folder filename can be entered in the "Copy manufacture's files from:" field.
7. After you have specified the folder in the "Copy manufacture's files from:" field, click on the "OK" button.
8. Return to "Add Printer Wizard". Select "Inetfax01400-US" and click on the "Next>" button.
9. "Click the port you want to use with this printer, and then click Next." is displayed and the table of "Available ports:" is displayed. Select "LPT1: Printer Port" (the characters are reversed) and click on the "Next>" button. This port will be changed later.
10. "Inetfax01400-US" is displayed for the printer name. Select whether it is set for normal printer or not and click on the "Finish" button.
11. When the files copying is completed, the "Inetfax01400-US" icon will be displayed in the "Printers" window. Now, the installation of the printer driver is completed.
12. Next, install the mail linking program. The file mpusxxxx.exe is downloaded as a self-extracting archive type file in lzh format. Double-click on it in the Explorer, and it is automatically extracted and installation starts.



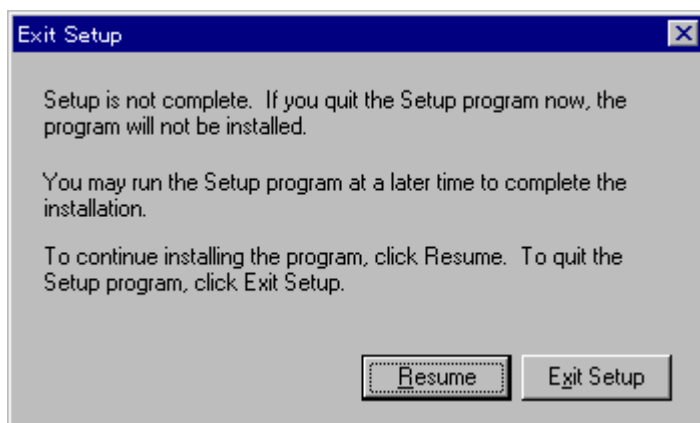
13. When the installer is started normally, the screen title "Welcome" will be displayed. Click on "Next>" to continue installation.



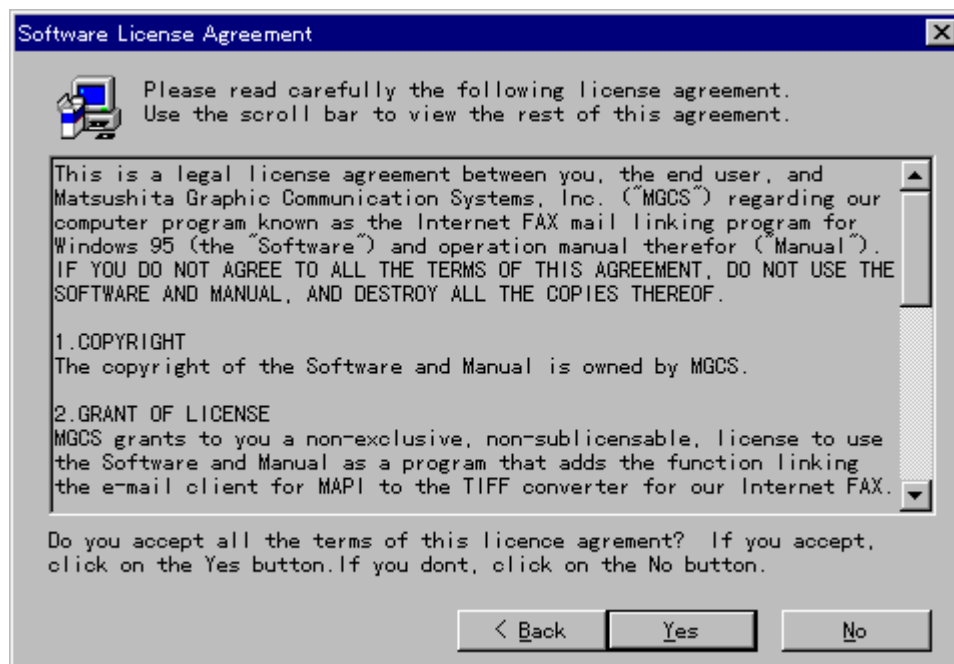
On the subsequent screen, click on "Cancel" any time, if you wish to abort installation.

If "Cancel" is clicked on, a dialog box will be displayed to confirm that set-up is aborted. Click on "Exit Setup" to terminate installation.

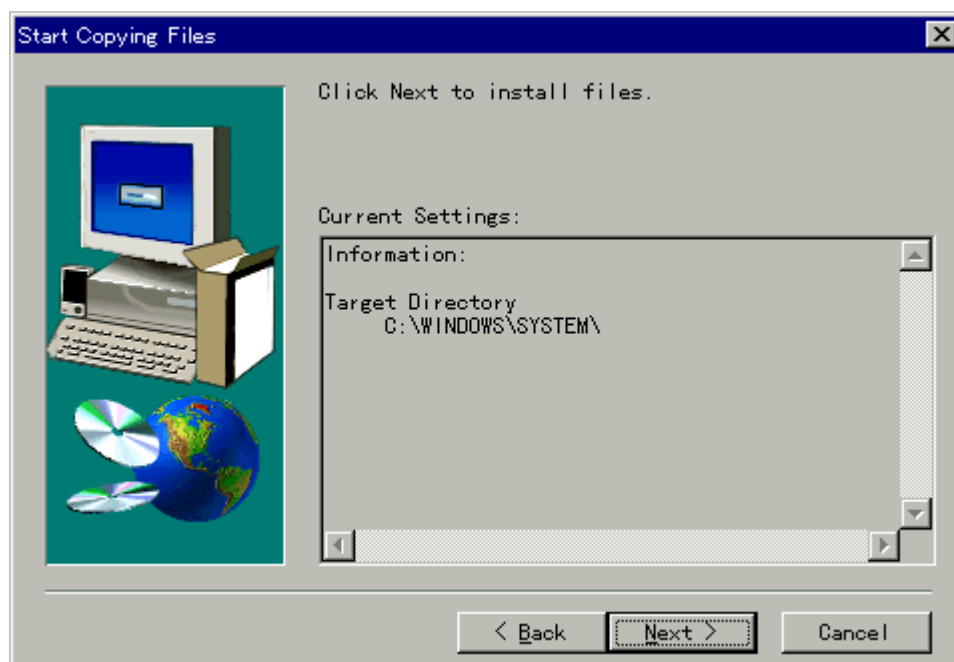
Click on "Resume" to continue installation.



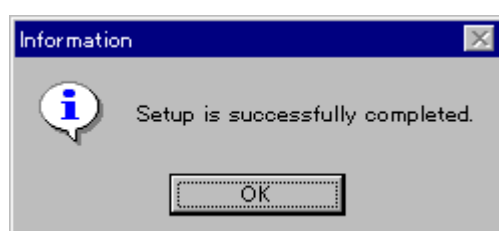
14. The license agreement is displayed. Please read it carefully. If you agree, click on "Yes". If "No" is clicked on, setup will be aborted.



15. Finally, the screen prompt to confirm start of installation is displayed. Click on "Next>" to start copying the files.



16. When the setup is correctly completed, the setup completion dialog box will be displayed. Click on "OK" to complete installation.



Now, installation is completed.

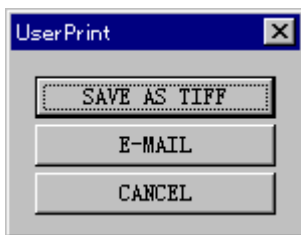
5. How to use the Internet FAX mail linking program

When the Internet FAX mail linking program installation is complete, the "E-MAIL" is added to the TIFF converter. The Internet FAX mail linking program has the same functions as those of the TIFF converter except for mail linking. Mail linking is actually executed as a normal printer is used.

Generally, select "Print" from the "File" menu to print.

(For details, refer to the manual for each software.)

When "Print" is selected, the dialog box to prompt selection of "Save as TIFF", "E-MAIL," or "Cancel" is displayed. (Some applications may hide the dialog box.)



Select "**E-MAIL**" to link an e-mail message.

When "E-MAIL" is selected, the mail linking function starts to work, the TIFF file is automatically saved, the transmission screen of the mail client is opened, and the TIFF file (saved as an attached file) is added. After the mail transmit screen is displayed, follow the operation procedure of each mail client to enter the necessary data such as addressee, and transmit it.

The following is technical information. Please refer to it, if necessary.

The name of the TIFF file created by the mail linking program is described in the environment set-up file, updialog.ini, for the TIFF converter.

updialog.ini is in the Windows system directory. Open updialog.ini with Memo Pad. If you change the file name (underlined section of the example below) to the right of TIFF-NAME= in the [Appinfo] section, you can change it to any file name.

At installation, it is set to be saved in the temporary directory with the name, TmplImage.TIF.

ex.) TIFF-NAME=C:¥Windows¥Temp¥TmplImage.TIF

Caution: Change of updialog.ini is risky. If any folder name is changed to a name that does not exist, or any file name that is not allowed on Windows, Windows may stop operation, in the worst case. We recommend that you perform the change of updialog.ini only if the mail linking program does not operate because, for example, there is not enough free space on the disk when the set-up at installation is used.
